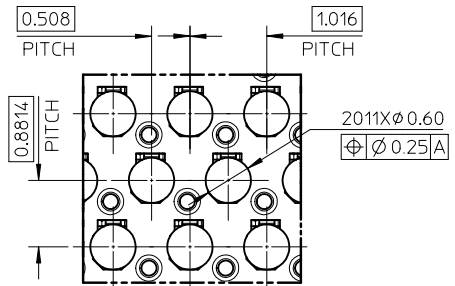
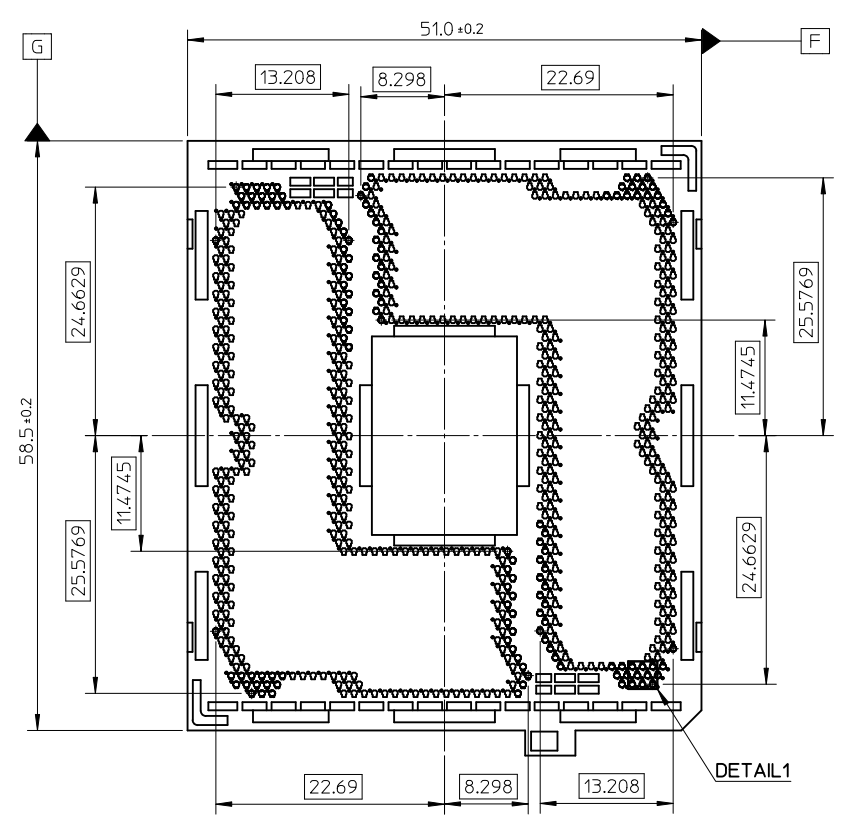
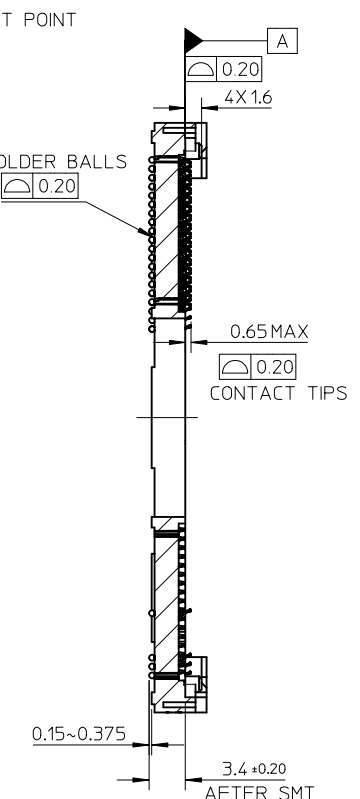
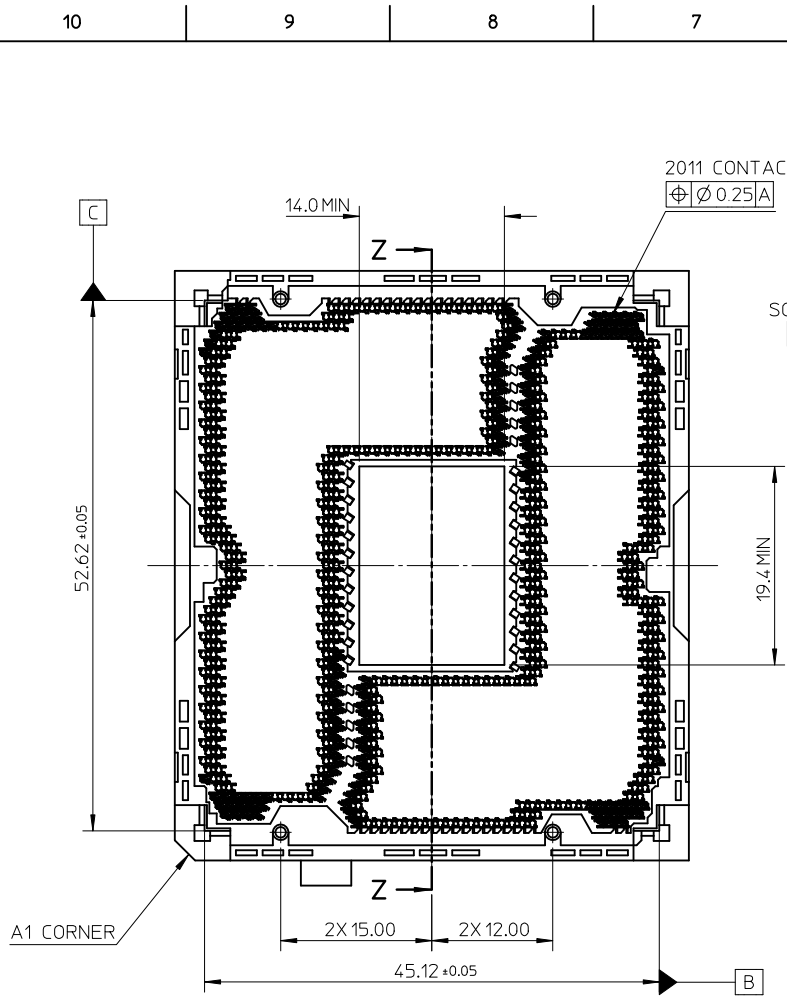


NOTES:

1. MATERIAL:  
HOUSING AND CAP: HIGH TEMPERATURE THERMOPLASTIC, UL94V-0, BLACK COLOR  
CONTACT: HIGH STRENGTH COPPER ALLOY  
SOLDER BALL: LEAD FREE SnAg3.0Cu0.5
2. PLATING:  
50u" NICKEL AT PADDLE AND CONTACT AREA.  
GOLD PLATING THICKNESS AT CONTACT AREA REFER TO TABLE.
3. DATE CODE "YMD\*\*" IS DEFINED AS:  
"YEAR/MONTH/DAY/MOLEX INTERNAL".
4. PRODUCT SPECIFICATION PS-105142-001 APPLIES.
5. PACKAGING SPECIFICATION PK-105142-001 APPLIES.
6. ALL PART NUMBERS COMPLIANT TO RoHS DIRECTIVE 2002/95/EC AND ELV DIRECTIVE 2000/53/EC.

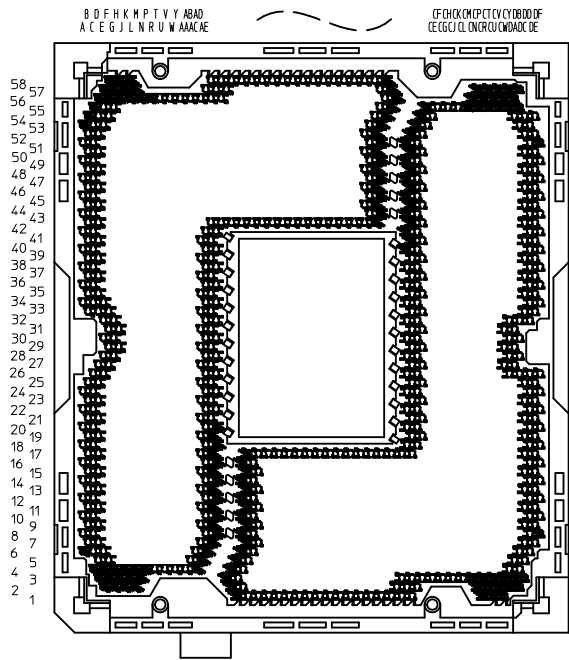
CAVITY NUMBER

NEW RELEASE EC NO: SH2012-0185 DRWN: YXZHENG CHKD: APPR: AYIN	DESCRIPTION 2011/08/17 2012/06/04	QUALITY SYMBOLS	GENERAL TOLERANCES (UNLESS SPECIFIED)		DIMENSION STYLE	SCALE	DESIGN UNITS	THIRD ANGLE PROJECTION	
		$F_A=0$ $F_C=0$ $F_P=0$	mm	INCH	MM ONLY	2:1	METRIC		
			4 PLACES ± --- ± ---		DRAWN BY	DATE	TITLE		
			3 PLACES ± --- ± ---		YXZHENG	2010/12/17	LGA 2011-0 SOCKET (R0)		
	2 PLACES ± 0.25 ± ---		CHECKED BY	DATE					
	1 PLACE ± 0.25 ± ---		APPROVED BY	DATE					
	ANGULAR ± 3 °		AYIN	2012/06/04	MOLEX INCORPORATED				
			MATERIAL NO.	DOCUMENT NO.					
			SEE SHEET 4	SD-105142-001					
			SIZE	THIS DRAWING CONTAINS INFORMATION THAT IS PROPRIETARY TO MOLEX INCORPORATED AND SHOULD NOT BE USED WITHOUT WRITTEN PERMISSION					
			A3						
			DRAFT WHERE APPLICABLE MUST REMAIN WITHIN DIMENSIONS						
							SHEET NO.		
							1 OF 4		

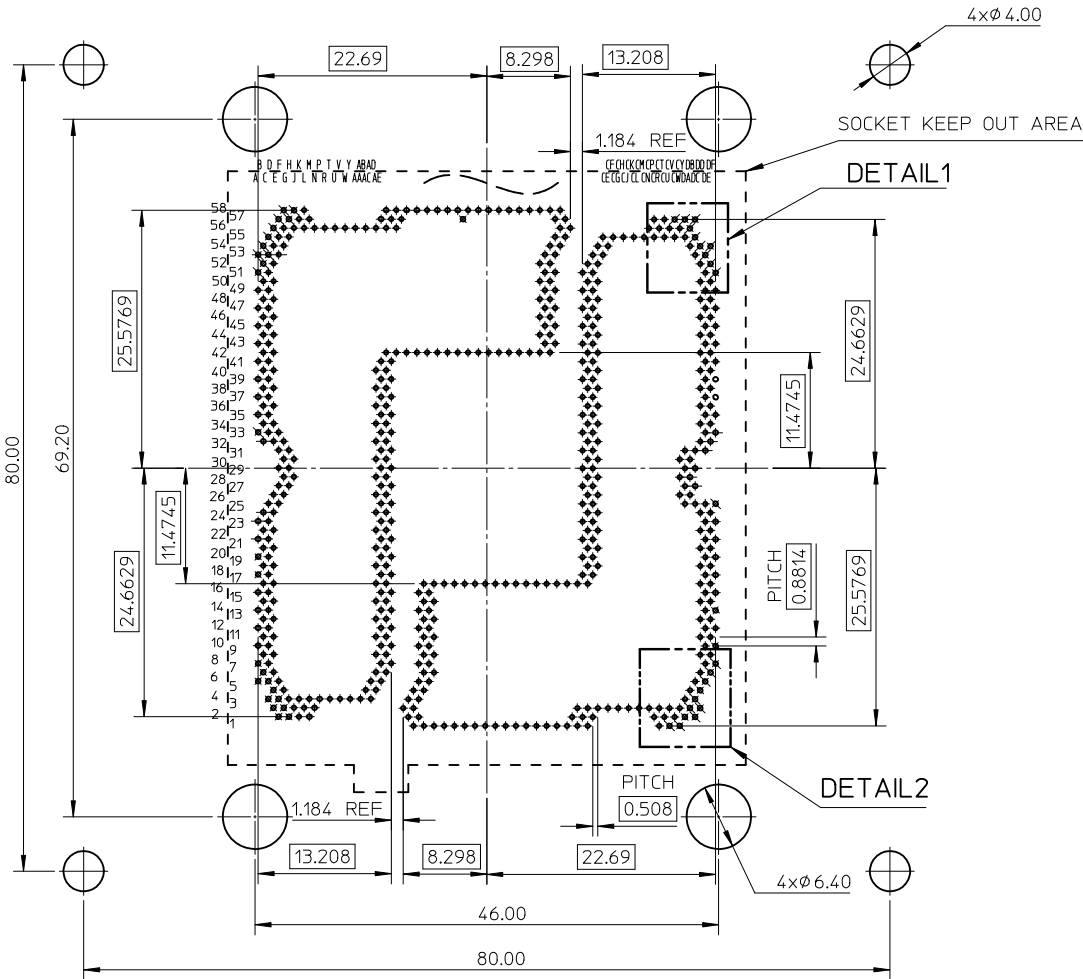


<b>NEW RELEASE</b> EC NO: SH2012-0185 DRWN: YXZHENG CHKD: APPR: AYIN 2011/08/17 2012/06/04	DESCRIPTION REV A	QUALITY SYMBOLS $F_A=0$ $F_C=0$ $F_P=0$	GENERAL TOLERANCES (UNLESS SPECIFIED)		DIMENSION STYLE <b>MM ONLY</b>	SCALE <b>2:1</b>	DESIGN UNITS <b>METRIC</b>	THIRD ANGLE PROJECTION		
				DRAWN BY YXZHENG	DATE 2010/12/17	TITLE <b>LGA 2011-0 SOCKET (R0)</b>				
				CHECKED BY		DATE		APPROVED BY AYIN		
				DATE 2012/06/04		MATERIAL NO. <b>SEE SHEET 4</b>		DOCUMENT NO. <b>SD-105142-001</b>		SHEET NO. <b>2 OF 4</b>
DRAFT WHERE APPLICABLE MUST REMAIN WITHIN DIMENSIONS			SIZE <b>A3</b>	THIS DRAWING CONTAINS INFORMATION THAT IS PROPRIETARY TO MOLEX INCORPORATED AND SHOULD NOT BE USED WITHOUT WRITTEN PERMISSION						

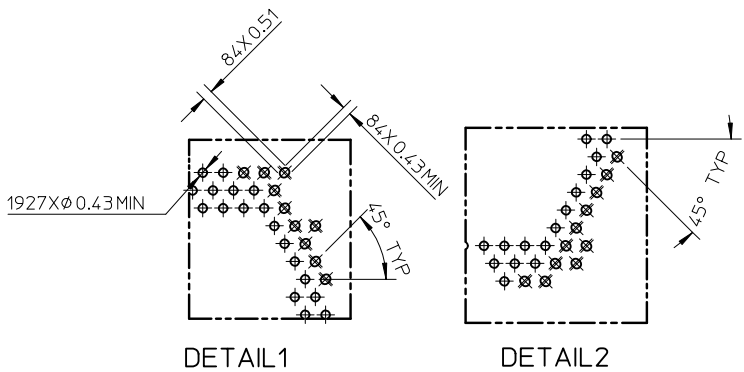
10 9 8 7 6 5 4 3 2 1



CONTACT NUMBER DEFINITION



RECOMMENDED PCB LAYOUT FOR NORMAL FRAME

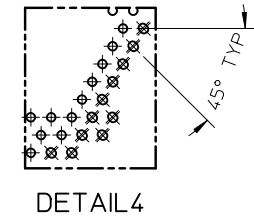
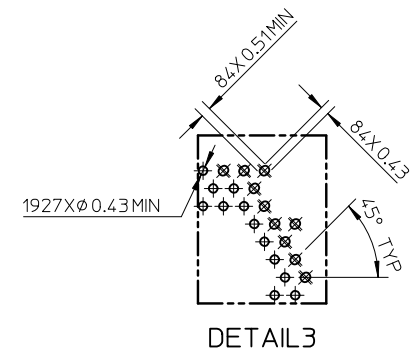
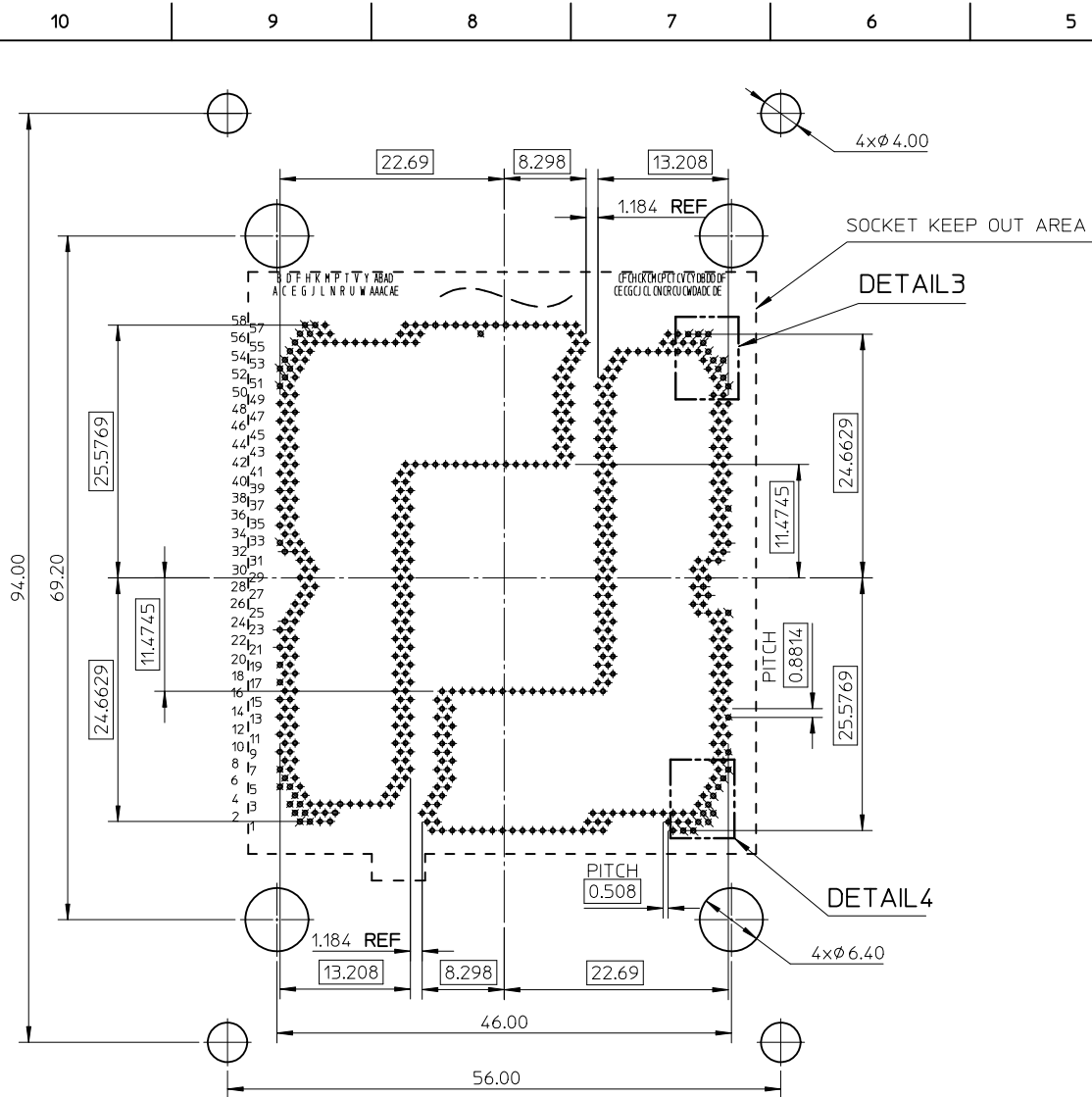


DETAIL1

DETAIL2

<b>NEW RELEASE</b> EC NO: SH2012-0185 DRWN: YXZHENG 2011/08/17 CHKD: APPR: AYIN 2012/06/04	DESCRIPTION A	QUALITY SYMBOLS	$\nabla_{\sigma} = 0$ $\nabla_{\sigma} = 0$ $\nabla_{\sigma} = 0$	GENERAL TOLERANCES (UNLESS SPECIFIED)	mm INCH 4 PLACES ± --- ± --- 3 PLACES ± --- ± --- 2 PLACES ± 0.25 ± --- 1 PLACE ± 0.25 ± --- ANGULAR ± 3°	DIMENSION STYLE	MM ONLY	SCALE	2:1	DESIGN UNITS	METRIC	THIRD ANGLE PROJECTION	
		DRAWN BY	YXZHENG	DATE	2010/12/17	TITLE	LGA 2011-0 SOCKET (R0)						
		CHECKED BY		DATE		APPROVED BY	AYIN	DATE	2012/06/04	MATERIAL NO.	SEE SHEET 4	DOCUMENT NO.	SD-105142-001
		DRAFT WHERE APPLICABLE MUST REMAIN WITHIN DIMENSIONS		SIZE	A3	THIS DRAWING CONTAINS INFORMATION THAT IS PROPRIETARY TO MOLEX INCORPORATED AND SHOULD NOT BE USED WITHOUT WRITTEN PERMISSION							SHEET NO.

9 8 7 6 5 4 3 2 1



RECOMMENDED PCB LAYOUT FOR NARROW FRAME

30U"	1051420133
15U"	1051420132
GOLD THICKNESS	PART NUMBER

<b>NEW RELEASE</b> EC NO: SH2012-0185 DRWN: YXZHENG 2011/08/17 CHKD: APPR: AYIN 2012/06/04	DESCRIPTION F <sub>A</sub> =0 F <sub>G</sub> =0 F <sub>P</sub> =0	QUALITY SYMBOLS		GENERAL TOLERANCES (UNLESS SPECIFIED)		DIMENSION STYLE <b>MM ONLY</b>		SCALE <b>2:1</b>	DESIGN UNITS <b>METRIC</b>	THIRD ANGLE PROJECTION		
								DRAWN BY YXZHENG	DATE 2010/12/17	TITLE <b>LGA 2011-0 SOCKET(R0)</b>		
								CHECKED BY				
								APPROVED BY AYIN		DATE 2012/06/04	<b>MOLEX INCORPORATED</b>	
				DRAFT WHERE APPLICABLE MUST REMAIN WITHIN DIMENSIONS		MATERIAL NO. <b>SEE TABLE</b>		DOCUMENT NO. <b>SD-105142-001</b>		SHEET NO. <b>4 OF 4</b>		
						SIZE <b>A3</b>		THIS DRAWING CONTAINS INFORMATION THAT IS PROPRIETARY TO MOLEX INCORPORATED AND SHOULD NOT BE USED WITHOUT WRITTEN PERMISSION				