

DESIGNED & DIMENSIONED
IN MILLIMETERS[INCHES]

DIN7A-J-P-XX-RA-BH1

SERIES
-7A: 75 OHM DIN 1.0/2.3

GENDER
-J: JACK

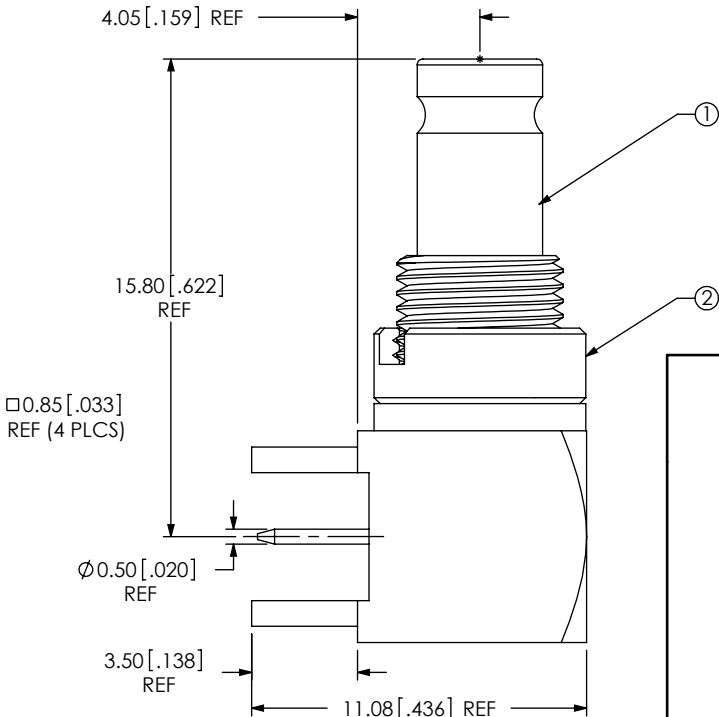
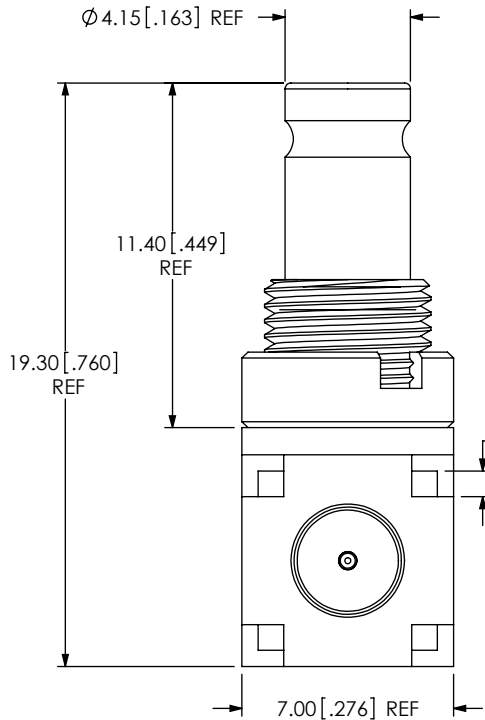
TYPE
-P: PCB

TERMINATION
-BH1: BULKHEAD THROUGH HOLE

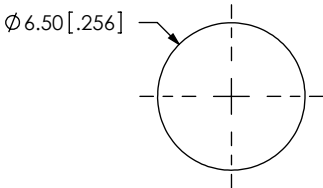
ORIENTATION
-RA: RIGHT ANGLE

PLATING SPECIFICATION **C**
-HG: 30μ" GOLD CENTER CONTACT,
10μ" GOLD OUTER CONTACT
100μ" Ni ON BODY
-HF: 30μ" GOLD CENTER CONTACT,
3μ" GOLD OUTER CONTACT
100μ" Ni ON BODY
-GF: 10μ" GOLD CENTER CONTACT,
3μ" GOLD OUTER CONTACT
100μ" Ni ON BODY
(SEE TABLE 1)

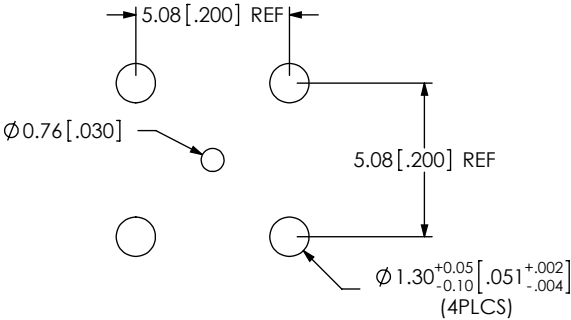
TABLE 1 C				
ITEM	COMPONENT	-HG	-HF	-GF
1	SUB ASSEMBLY	SUB-DIN7A-J-P-HG-RA-BH1	SUB-DIN7A-J-P-HF-RA-BH1	SUB-DIN7A-J-P-GF-RA-BH1
2	NUT	DINA-NUT-001-N		



RECOMMENDED MOUNTING HOLE
2.40 [.095] MAX PANEL THICKNESS



RECOMMENDED PCB LAYOUT



- NOTES:
1. REPRESENTS A CRITICAL DIMENSION.
 2. DELETED.
 3. DELETED.
 4. DELETED.
 5. DELETED.
 6. DELETED.
 7. NUT TO BE PACKAGED SEPARATELY.

UNLESS OTHERWISE SPECIFIED
DIMENSIONS ARE IN MILLIMETERS

TOLERANCES ARE:

DECIMALS	ANGLES
.X: ±0.3 [.01]	5°
.XX: ±0.13 [.005]	
.XXX: ±0.051 [.0020]	

PROPRIETARY NOTE

THIS DOCUMENT CONTAINS INFORMATION
CONFIDENTIAL AND PROPRIETARY TO
SAMTEC, INC. AND SHALL NOT BE REPRODUCED
OR TRANSFERRED TO OTHER DOCUMENTS OR
DISCLOSED TO OTHERS OR USED FOR ANY
PURPOSE OTHER THAN THAT WHICH IT WAS
OBTAINED WITHOUT THE EXPRESSED WRITTEN
CONSENT OF SAMTEC, INC.

MATERIAL: DO NOT SCALE DRAWING SHEET SCALE: 4:1

SHELL,BODY,NUT,WASHER: BRASS
CENTER CONTACT: COPPER ALLOY
DIELECTRIC: PTFE



520 PARK EAST BLVD, NEW ALBANY, IN 47150
PHONE: 812-944-6733 FAX: 812-948-5047
e-Mail: info@SAMTEC.com code: 55322

DESCRIPTION:
TRUE 75 OHM RIGHT ANGLE JACK ASSEMBLY

DWG. NO.
DIN7A-J-P-XX-RA-BH1

BY: talonz 03/19/2010 SHEET 1 OF 1