

PART NUMBER	TAB SIZE	WIRE RANGE AWG	MAX. INSUL. DIA.	DIMENSIONS in.		
				A $\pm .03$	B $\pm .01$	C $\pm .01$
DNF18-110	.110 X .032 (2.8 X 0.8)	22-18 (0.5-1.0)	.100 (2.54)	.69 (17.5)	.15 (3.8)	.08 (2.0)
DNF18-111	.110 X .020 (2.8 X 0.5)	22-18 (0.5-1.0)	.100 (2.54)	.69 (17.5)	.15 (3.8)	.07 (1.8)

NOTES:

1. UL LISTED AND CSA CERTIFIED FOR:

- A. 300V. MAX. VOLTAGE RATING
 B. #22-18 AWG STRANDED COPPER WIRE ONLY
 C. 194° F (90° C) MAX. TEMP. RATING

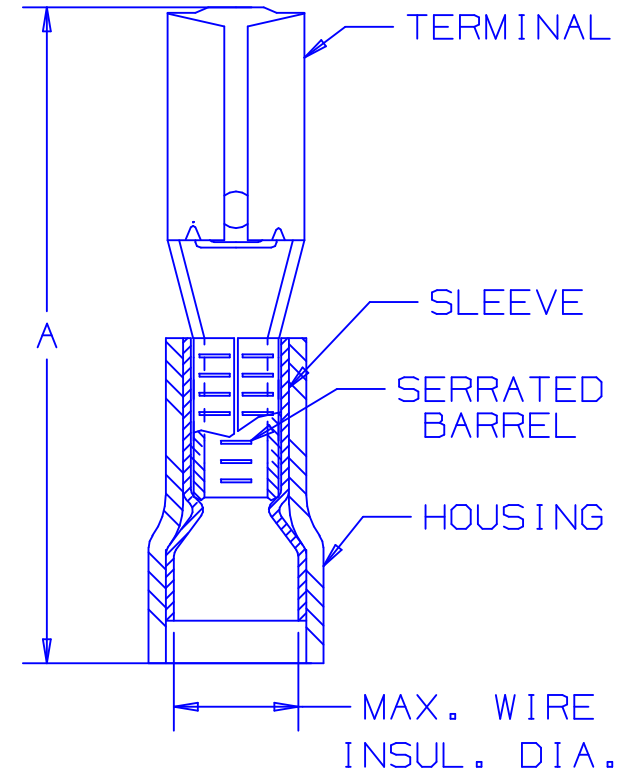
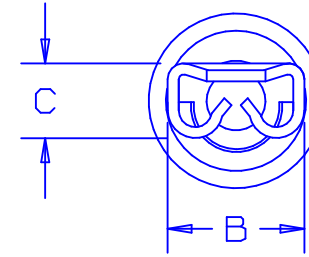
2. MATERIAL:

- A. STAMPING - .010" (0.25) THK BRASS,
 TIN PLATED
 B. SLEEVE - BRASS, TIN PLATED
 C. HOUSING - NYLON, RED

3. PACKAGE QTY: STD. PKG. -C= 100
BULK PKG. -M= 10004. INITIAL INSERTION FORCE - 12 LB. (53 N) MAX
INITIAL WITHDRAWAL FORCE - 12 LB. (53 N) MAX
6 LB. (27 N) MIN5. DIMENSIONS IN BRACKETS ARE IN MILLIMETERS OR mm²

6. INSTALLATION TOOLS:

- A. UL LISTED & CSA CERTIFIED: CT-520, CT-1525
 B. PANDUIT RECOMMENDED: CT-100

7. WIRE STRIP LENGTH: 9/32 ^{+1/32}₋₀ (7.1 ⁺⁸₋₀)

LISTED
20H3
E78522



CERTIFIED
LR31212

A41308_05

05	7/03	KLFU		UPDATED DRAWING				<p>PANDUIT CORP. TINLEY PARK, ILLINOIS</p> <p>#22-18 BARREL NYLON INSULATED FEMALE DISCONNECT, FUNNELED WIRE ENTRY</p>
04	5/98	TM	JW	ADDED CT-1525 TO TOOL NOTES	06872	LA	DH	
03	6/95	MS	RS	UPDATED NOTES AND DIMENSIONS	03370	LA	KS	
02	11/94	TH	RS	UPDATED NOTES AND DIMENSIONS	02689	LA	TK	
REV	DATE	BY	CHK	DESCRIPTION	ECN #	CUST	PM	<p>DRAWN BY DAW</p> <p>CHK'D</p> <p>SCALE NONE</p> <p>DRAWING NO. A41308</p>

Mouser Electronics

Authorized Distributor

Click to View Pricing, Inventory, Delivery & Lifecycle Information:

Panduit:

[DNF18-111-C](#) [DNF18-111-M](#)