

AMPHENOL PART NUMBER CONFIGURATION:

U65 - X XX - X X 1 XXXX

INFINITY
RECEPTACLE

STYLE

B = R/A SMT, 2 LOCATION
AND 2 SOLDERING POSTS
E = R/A SMT, 2 LOCATION
AND 2 SCREW MOUNT HOLES

CONNECTOR TYPE

04 = 4X
12 = 12X

PLATING

1 = 50μ" GOLD
2 = 30μ" GOLD
3 = GOLD FLASH OVER
PALLADIUM-NICKEL (LEAD FREE)
4 = 50μ" GOLD (RoHS COMPLIANT)
5 = 30μ" GOLD (RoHS COMPLIANT)
B = 50μ" GOLD (RoHS COMPLIANT)
C = 30μ" GOLD (RoHS COMPLIANT)

OPTION

0 = 2 PIECE LOCKING PLATE (SHIPPED LOOSE)
1 = ONE PIECE LOCKING PLATE (SHIPPED LOOSE)
2 = NO LOCKING PLATE
3 = NO LOCKING PLATE AND NO GASKET

1. MATERIAL:

PLASTIC HOUSING:

HIGH TEMPERATURE POLYMER, FLAMMABILITY RATING UL94V-0.

CONTACTS:

PHOSPHOR BRONZE

PLATING OPTION 1 OR 2 (50μ" OR 30μ" GOLD): 50μ" [1.27 μm] OR 30μ" [0.76 μm] MIN. GOLD OVER 50μ" [1.27 μm] MIN. NICKEL ON CONTACT MATING SURFACES. 150μ" [3.81 μm] MIN. TIN-LEAD (90/10) OVER 50μ" [1.27 μm] NICKEL ON CONTACT TAILS.

PLATING OPTION 3 (GOLD FLASH OVER PALLADIUM-NICKEL): 2μ" [0.05 μm] MIN. GOLD OVER 25μ" [0.635 μm] MIN. PALLADIUM-NICKEL ON CONTACT MATING SURFACES. 0.3μ" [0.007 μm] MIN. GOLD OVER 1.2μ" [0.03 μm] MIN. PALLADIUM-NICKEL ON CONTACT TAILS. 50μ" [1.27 μm] MIN. NICKEL UNDER PLATING.

PLATING OPTION 4 OR 5 (RoHS) (50μ" OR 30μ" GOLD): 50μ" [1.27 μm] OR 30μ" [0.76 μm] MIN. GOLD OVER 50μ" [1.27 μm] MIN. NICKEL ON CONTACT MATING SURFACES. 2μ" [0.05 μm] MIN. GOLD OVER 50μ" [1.27 μm] MIN. NICKEL ON CONTACT TAILS.

PLATING OPTION B OR C (RoHS) (50μ" OR 30μ" GOLD): 50μ" [1.27 μm] OR 30μ" [0.76 μm] MIN. GOLD OVER 50μ" [1.27 μm] MIN. NICKEL ON CONTACT MATING SURFACES. 100-150μ" [2.54-3.81 μm] MATTE TIN OVER 50μ" [1.27 μm] MIN. NICKEL ON CONTACT TAILS.

METAL SHELL: DIE CASTING ALLOY

PLATING: 100μ" [2.54 μm] MIN. NICKEL OVER COPPER UNDER LAYER

GASKET: STAINLESS STEEL

LOCKING PLATE: STAINLESS STEEL

M2 SCREWS: STEEL WITH ZINC PLATING

2. TEMPERATURE RANGE:

-40°C TO +85°C

REVISIONS				
SYM	ZONE	ECN, ERN NO.	DATE	APPRD.
E		PROPOSAL	APR16/10	Z.L.
F		NEW OPTION ADDED	JUN16/11	Z.L.

THIS IS A CAD DRAWING. DO NOT MANUALLY REVISE.

PACKAGING/SPECIAL

(NOTE: ALL "M" OPTIONS ARE FOR STYLE E
WITH .062" TO .093" THICK PCB'S ONLY)
NO DIGIT = TRAY PACKAGING
NO REAR COVER
C = TRAY PACKAGING
WITH REAR COVER (SHIPPED LOOSE)
M = TRAY PACKAGING, NO REAR COVER,
M2 SCREWS INCLUDED (SHIPPED LOOSE)
CM = TRAY PACKAGING, W/ REAR COVER,
M2 SCREWS INCLUDED (BOTH SHIPPED LOOSE)
T = TAPE & REEL PACKAGING
NO REAR COVER
CT = TAPE & REEL PAKAGING
W/ REAR COVER (SHIPPED LOOSE)
CAT = TAPE & REEL PAKAGING
W/ REAR COVER ASSEMBLED
MT = TAPE & REEL PAKAGING, NO REAR COVER,
M2 SCREWS INCLUDED (SHIPPED LOOSE)
CMT = TAPE & REEL PAKAGING, W/ REAR COVER,
M2 SCREWS INCLUDED (BOTH SHIPPED LOOSE)

KEYING OPTION

0 = NO KEYING (STD)
1 = KEYING 1 & 6
2 = KEYING 2 & 6
3 = KEYING 3 & 5
4 = KEYING 4 & 5

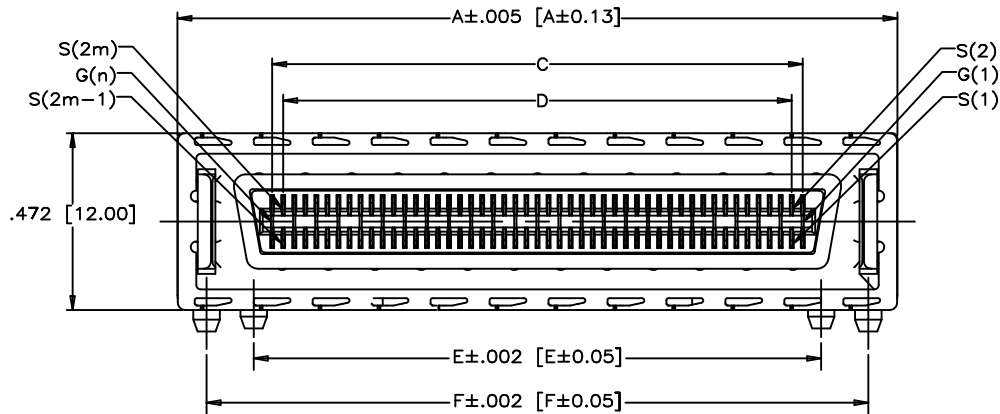
MOUNTING STYLE

LANYARD LATCH

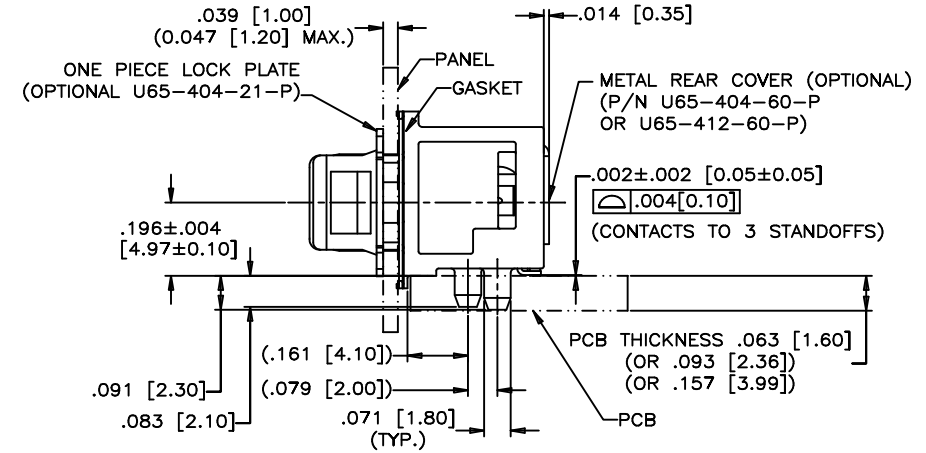
DRAWN	M.LONG	DATE	2005/05/16	Amphenol Canada Corp.		
DESIGNED						
CHECKED	J.SI	2005/05/16				
I. E. APPRD.						
Q. A. APPRD.						
DWG. APPRD.				TITLE INFINITY 4X/12X RECEPTACLE, LANYARD STYLE, FIXED BOARD, RIGHT ANGLE SMT, LOCATING/SOLDERING POSTS		
ENG. REL. NO.						
REF.						
DIMENSIONS ARE IN	CODE ID. NO.					
INCHES [mm]	03554					
DWG.	A	SCALE	2/1	WT.	-----	REV. F
				SURF.	-----	
						SHEET 1 OF 4

REVISIONS				
SYM	ZONE	ECN, ERN NO.	DATE	APPRD.
E		PROPOSAL	APR16/10	Z.L.
F		NEW OPTION ADDED	JUN16/11	Z.L.

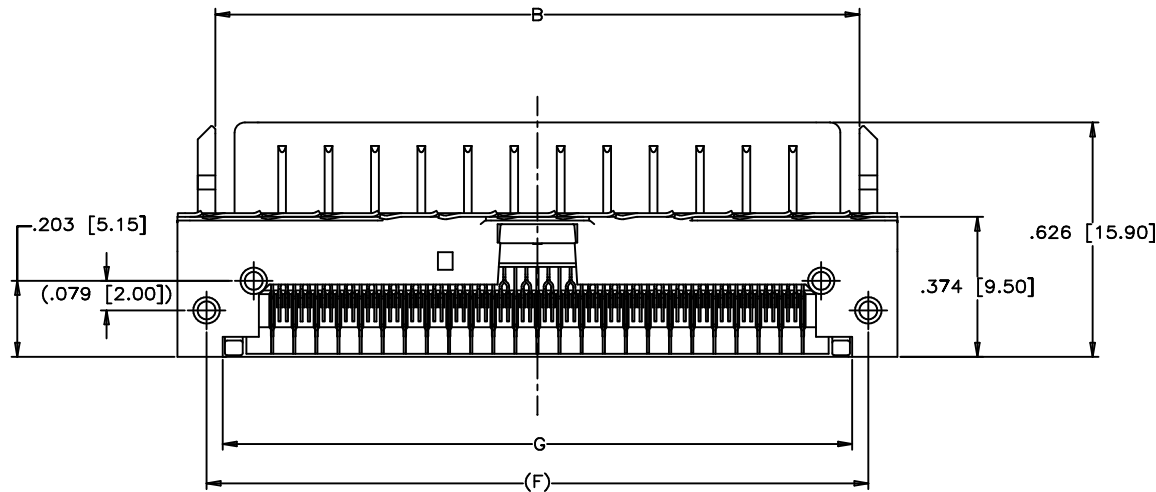
THIS IS A CAD DRAWING. DO NOT MANUALLY REVISE.



U65-BXX-XX1XXX
(LOCK PLATE REMOVED)



U65-BXX-XX1XXX



U65-BXX-XX1XXX
(LOCK PLATE REMOVED)

DIMENSION TABLE:

PART NUMBER	U65-X04-XX1XXX	U65-X12-XX1XXX
A	.978 [24.85]	1.923 [48.85]
B	.776 [19.70]	1.720 [43.70]
C	.472 [12.00]	1.417 [36.00]
D	.413 [10.50]	1.358 [34.50]
E	.571 [14.50]	1.516 [38.50]
F	.823 [20.90]	1.768 [44.90]
G	.736 [18.70]	1.681 [42.70]
H	.894 [22.70]	1.839 [46.70]
K	.776 [19.70]	1.720 [43.70]
m	m = 1 - 8	m = 1 - 24
n	n = 1 - 9	n = 1 - 25

** REFER TO [mm] AS PRIMARY DIMENSIONS.

DRAWN	M.LONG	DATE	2005/05/16
DESIGNED			
CHECKED	J.SI	DATE	2005/01/07
I. E. APPRD.			
Q. A. APPRD.			
DWG. APPRD.			
ENG. REL. NO.			
REF.			
DIMENSIONS ARE IN	CODE ID. NO.		
INCHES [mm]	03554		

Amphenol Canada Corp.

TITLE
INFINITY 4X/12X RECEPTACLE, LANYARD
STYLE, FIXED BOARD, RIGHT ANGLE SMT,
LOCATING/SOLDERING POSTS

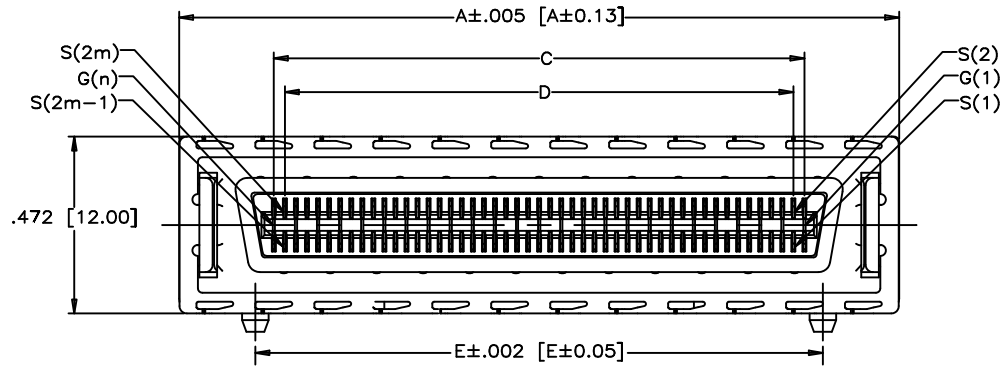
DWG. DRAWING NO.
A P-U65-XXX-XX1XXXX REV.
F

SCALE 2/1 WT. ----- SURF. ----- SHEET 2 OF 4

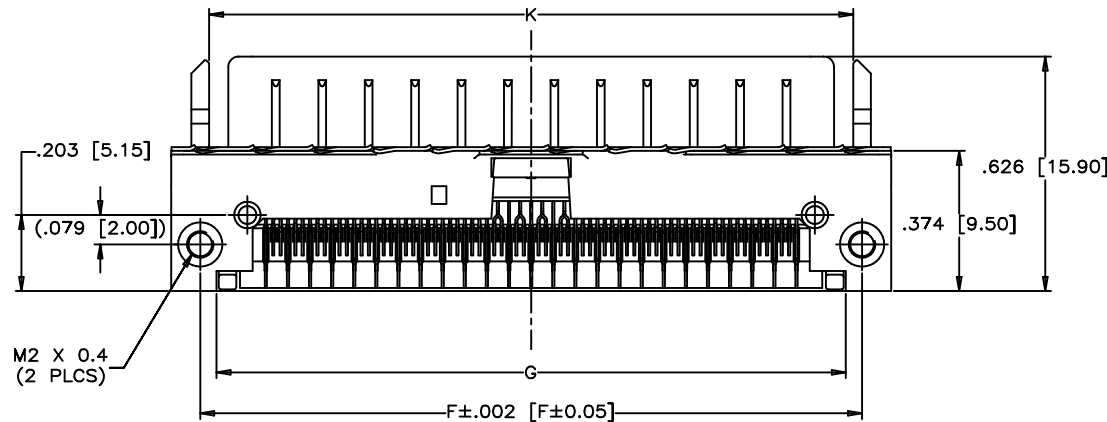
THIS DOCUMENT CONTAINS PROPRIETARY INFORMATION AND SUCH INFORMATION
MAY NOT BE DISCLOSED TO OTHERS FOR ANY PURPOSE OR USED FOR MANUFACTURING
PURPOSES WITHOUT WRITTEN PERMISSION FROM AMPHENOL CANADA CORP.

REVISIONS				
SYM	ZONE	ECN, ERN NO.	DATE	APPRD.
E		PROPOSAL	APR16/10	Z.L.
F		NEW OPTION ADDED	JUN16/11	Z.L.

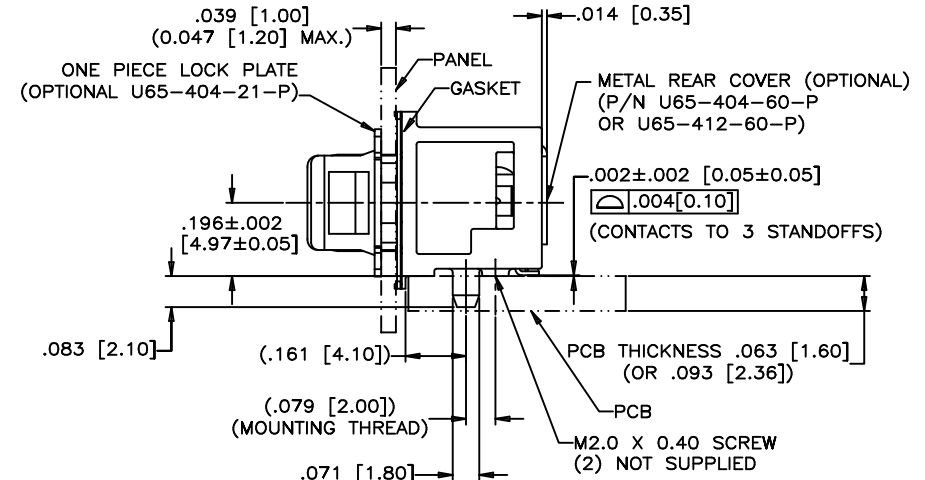
THIS IS A CAD DRAWING. DO NOT MANUALLY REVISE.



U65-EXX-XX7XXX
(LOCK PLATE REMOVED)



U65-EXX-XX7XXX
(LOCK PLATE REMOVED)



U65-EXX-XX1XXX
(SCREW MOUNT)

** REFER TO [mm] AS PRIMARY DIMENSIONS.

DRAWN	M.LONG	DATE	2005/05/16
DESIGNED			
CHECKED	J.SI	2005/05/16	
I. E. APPRD.			
Q. A. APPRD.			
DWG. APPRD.			
ENG. REL. NO.			
REF.			
DIMENSIONS ARE IN	CODE ID. NO.		
INCHES [mm]	03554		

Amphenol Canada Corp.

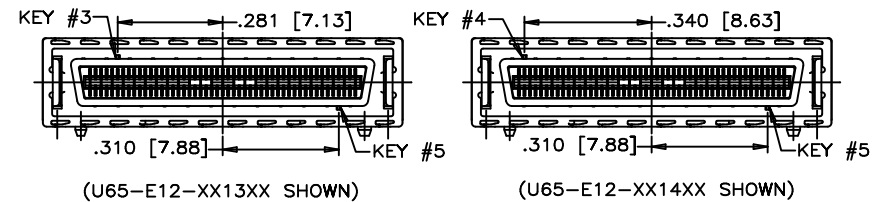
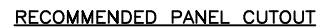
TITLE
INFINITY 4X/12X RECEPTACLE, LANYARD
STYLE, FIXED BOARD, RIGHT ANGLE SMT,
LOCATING/SOLDERING POSTS

DWG A DRAWING NO. P-U65-XXX-XX1XXXX REV. F

SCALE 2/1 WT. ----- SURF. ----- SHEET 3 OF 4

THIS DOCUMENT CONTAINS PROPRIETARY INFORMATION AND SUCH INFORMATION
MAY NOT BE DISCLOSED TO OTHERS FOR ANY PURPOSE OR USED FOR MANUFACTURING
PURPOSES WITHOUT WRITTEN PERMISSION FROM AMPHENOL CANADA CORP.

THIS IS A CAD DRAWING. DO NOT MANUALLY REVISE.



DRAWN	M. LONG	DATE	2005/05/11
DESIGNED			
CHECKED	J. SI	2005/05/11	
I. E. APPRD.			
Q. A. APPRD.			
DWG. APPRD.			
ENG. REL. NO.			
REF.			
DIMENSIONS ARE IN		CODE ID. NO.	
INCHES [mm]		03554	

DWG A	DRAWING NO. P-U65-XXX-XX1XXXX				REV. F
SCALE 2/1	WT. _____	SURF. _____	SHEET 4 OF 4		

THIS DOCUMENT CONTAINS PROPRIETARY INFORMATION AND SUCH INFORMATION
MAY NOT BE DISCLOSED TO OTHERS FOR ANY PURPOSE OR USED FOR MANUFACTURING
PURPOSES WITHOUT WRITTEN PERMISSION FROM AMPHENOL CANADA CORP.