

T2008

Small Tongue-Operated Safety Interlock Switch

- Small size—these switches are ideal for guarding applications with space restrictions. Fits on 1 inch square tubing.
- NEMA 6 (IP67) enclosure enables these switches to withstand water washdown cleaning.
- Rotatable head gives eight possible actuator entry points for versatile installation. A blanking plug is supplied for the unused entry.
- Long life—these switches, with their stainless steel actuators, are designed for a minimum of one million actuations.
- Available with two contact poles. Contact configurations of 1 N/O and 1 N/C or 2 N/C are available to meet requirements of Dual Channel Safety Monitoring.
- An optional stainless steel guide is available for demanding applications.



Conforms to EN1088, EN292, EN60947-5-1, EN60204-1
UL and C-UL listed

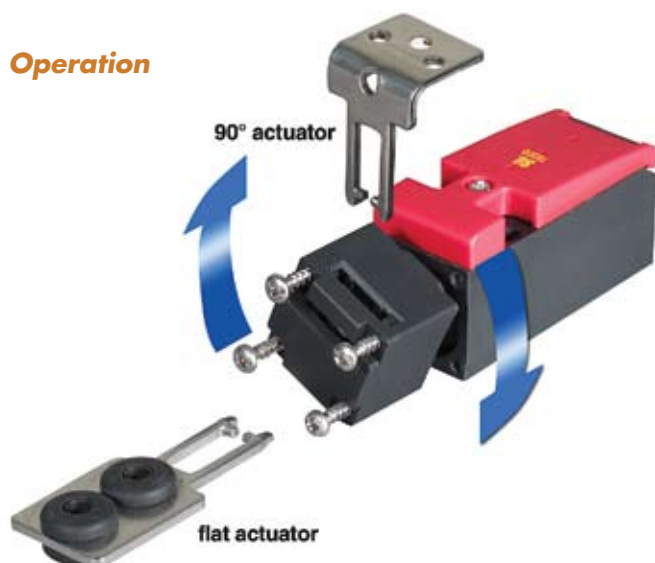
■ Actual Size



A Go to the Engineering Guide
For in-depth information on safety standards and use.

N For More Guarding Products
See Section N for safeguarding cutting and turning machines

■ Operation



Optional Slide Bolts

- Allows easy installation of switch on machine guards
- Actuator included (order switch separately)
- Integral handle included
- Metal construction is suitable for demanding applications
- Yellow color for easy recognition

G

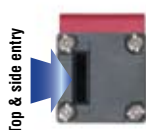
safety interlock switches

Head Position 1



Top & back entry

Head Position 2



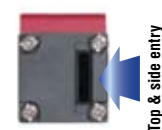
Top & side entry

Head Position 3

Top & front entry



Head Position 4



Top & side entry

Contact Arrangements



Optional Alignment Guide

Optional stainless steel alignment guide aids actuator entry and is easily installed.



Optional SLD Series

NEW!

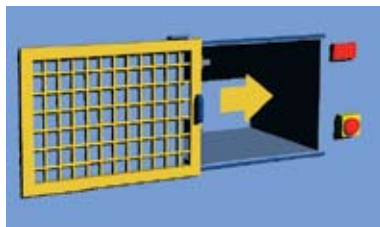
Optional switch locking devices are available. See accessories section for details.



 Universal Mounting Brackets can be used with this product. See page G241 for details.

■ Applications

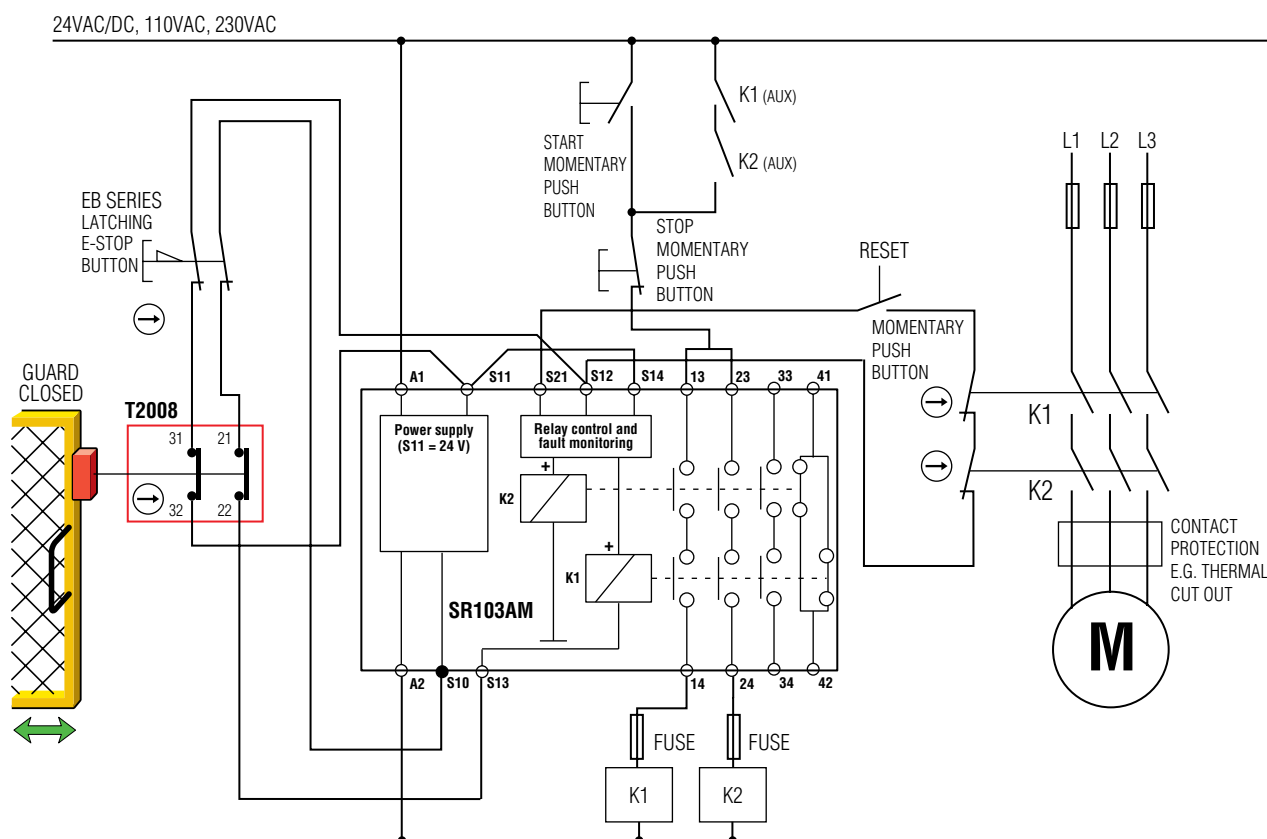
Typical applications are on sliding guard doors or swinging guard doors.



 For a full explanation of the circuit operating principle and fault detection, see "Common Circuit Examples" in the Engineering Section of this catalog.

G

safety interlock switches



A Go to the Engineering Guide
For in-depth information on safety standards and use.

N For More Guarding Products
See Section N for safeguarding cutting and turning machines

■ Specifications

Electrical		All Models
Contact Configurations:		1 N/O + 1 N/C, 2 N/C
Safety Contacts:		1 N/C positive break, 2 N/C positive break
Switching Ability		
AC:		230 V, 4 A
DC:		24 V, 4 A
Contact Material:		Silver alloy, gold flashed
Auxiliary Contacts:		1 N/O (T2008-11 models only)
Minimum Switching Voltage:		12 V at 10 mA
Minimum Switching Current:		1 mA at 24 V
Mechanical		
Mounting:		Any position
Mounting Hardware:		2 x M4 screws (not supplied)
Min Operating Radius:		150 to 200 mm based upon orientation of actuator to switch
Break Contact Min Force:		6 N (0.23 lb.)
Max Actuation Speed:		20 m/min.
Max Actuation Frequency:		7000 cycles/hour
Case Material:		Glass-fibre reinforced thermoplastic
Actuator Material:		Stainless steel
Wiring Entry:		1 x M16
Weight:		55 g (1.8 oz.)
Color:		Black with red lid
Mechanical Life:		1 x 10 ⁶ minimum
Environmental		
Protection:		IP67 (NEMA 6)
Operating Temperature:		-20 to 80°C (-4 to 176°F)
Cleaning:		Water washdown
Compliance		
Standards:		EN1088, EN292, EN60947-5-1, EN60204-1
Approvals/Listings:		CE marked for all applicable directives, UL and C-UL (BG pending)

Specifications are subject to change without notice.

Note: The safety contacts of the Omron STI switches are described as normally closed (N/C)—i.e., with the guard closed, actuator in place, and the machine able to be started.

[illegible]

■ Ordering

T2008 90-DEGREE ACTUATOR	Contacts	Wiring Entry	Part No.
T2008-11SM	1 N/C + 1 N/O	1 x M16 + NPT adapter	44540-0010
T2008-02SM	2 N/C	1 x M16 + NPT adapter	44540-0020
T2008 FLAT ACTUATOR			
T2008-11TM	1 N/C + 1 N/O	1 x M16 + NPT adapter	44540-0110
T2008-02TM	2 N/C	1 x M16 + NPT adapter	44540-0120
T2008 FLAT ACTUATOR WITH RUBBER BUSHING			
T2008-11TRM	1 N/C + 1 N/O	1 x M16 + NPT adapter	44540-0210
T2008-02TRM	2 N/C	1 x M16 + NPT adapter	44540-0220
T2008 SWITCH ONLY (no actuators and no adapters included)			
T2008-11	1 N/C + 1 N/O	1 x M16	44540-2010
T2008-02	2 N/C	1 x M16	44540-2020
ACCESSORIES			
Spare Actuators			
SA40-S00 90-degree actuator			44540-0700
SA40-T10 flat actuator			44540-0710
SA40-TR20 flat actuator with rubber bushings			44540-0720
Stainless Steel Guide			
SM40-SG50 stainless steel guide			44540-0750
Slide Bolt			
SB40-M00 slide bolt left or right hand door with bracket			44540-8000
Mounting Bracket			
SB40-M10 right angle bracket only for mounting T2008/T2011 switches			44540-8010
Adapter			
SC12-M16A00 M16 to 1/2 in. NPT adapter			44512-0300



Universal Mounting Brackets can be used with this product. See page G241 for details.

G

safety interlock switches