

29F0418-1SR-10

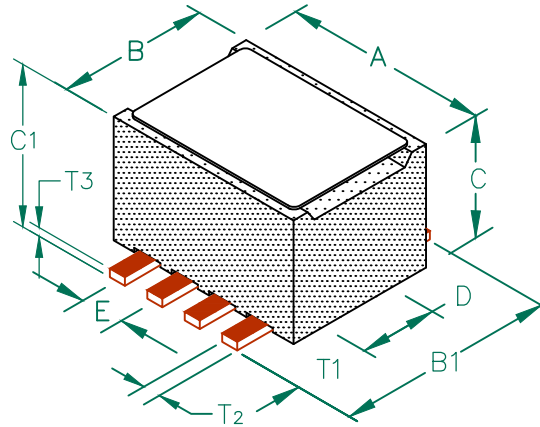
**UNCONTROLLED
DOCUMENT**

PHYSICAL DIMENSIONS:

A	6.10 [.240]	+ 0.13 [.005]
B	4.50 [.177]	+ 0.08 [.003] - 0.10 [.004]
B1	7.04 [.277]	+ MAX
C	4.19 [.165]	+ 0.10 [.004]
C1	4.83 [.190]	+ MAX
D	2.24 [.088]	+ 0.08 [.003]
E	1.27 [.050]	+ 0.13 [.005]

WIRE DIMENSIONS:

T1	2.16 [.085]	+ 0.25 [.010]
T2	0.50 [.020]	+ TYP.
T3	0.25 [.010]	+ TYP.



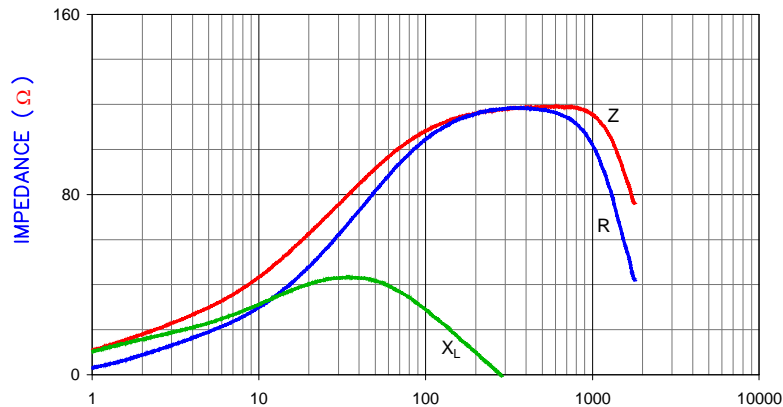
ELECTRICAL CHARACTERISTICS:

Z @ 100MHz (Ω)	DCR (Ω)	Rated Current
Nominal	119	
Minimum	90	
Maximum	149	0.01 6,000 mA

NOTES: UNLESS OTHERWISE SPECIFIED

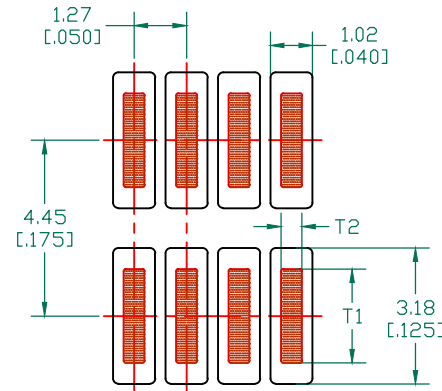
1. TAPED AND REELED per CURRENT EIA SPECIFICATIONS 13" REELS, 900 PCS/REEL.
2. COMPONENTS SHOULD BE ADEQUATELY PREHEATED BEFORE SOLDERING.
3. REF. CARRIER TAPE SPECIFICATION # CART 418-13.
4. TERMINATION FINISH IS 100% TIN.
5. OPERATION TEMPERATURE (INCLUDING SELF-HEATING): -40 ~ +125°C.

|Z|, R, AND X vs. FREQUENCY

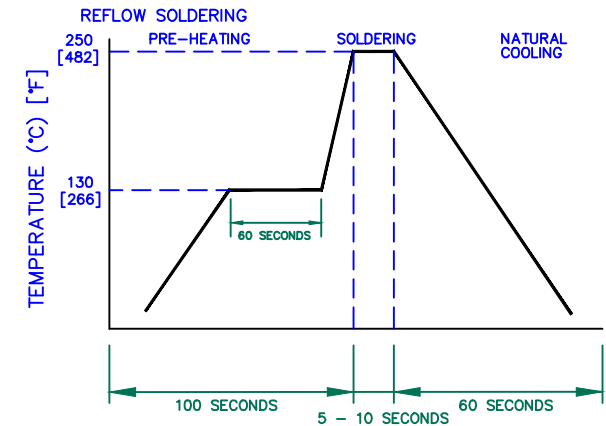


— Z — R — X_L

LAND PATTERNS FOR REFLOW SOLDERING



RECOMMENDED SOLDERING CONDITIONS



DIMENSIONS ARE IN mm (INCHES).

This print is the property of Laird Tech. and is loaned in confidence subject to return upon request and with the understanding that no copies shall be made without the written consent of Laird Tech. All rights to design or invention are reserved.			
E	ADD NOTE 5	08/30/12	QU
D	UPDATE COMPANY LOGO	10/21/08	JRK
C	UPDATE COMPANY LOGO	05/01/07	JRK
B	CHANGE TOLS ON E DIMS, ADD ROHS	03/19/07	JRK
A	ORIGINAL DRAFT	04/27/04	JRK
REV	DESCRIPTION	DATE	INT
PROJECT/PART NUMBER: 29F0418-1SR-10			
DATE: 04/27/04		SCALE: NTS	SHEET: 1 of 2
CAD # 29F0418-1SR-10-E-1		TOOL # -	

Laird

REV E PART TYPE: ASSEMBLY DRAWN BY: JRK

RoHS