

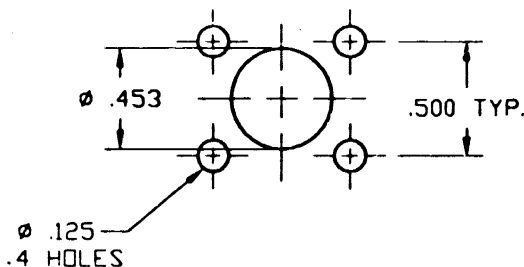
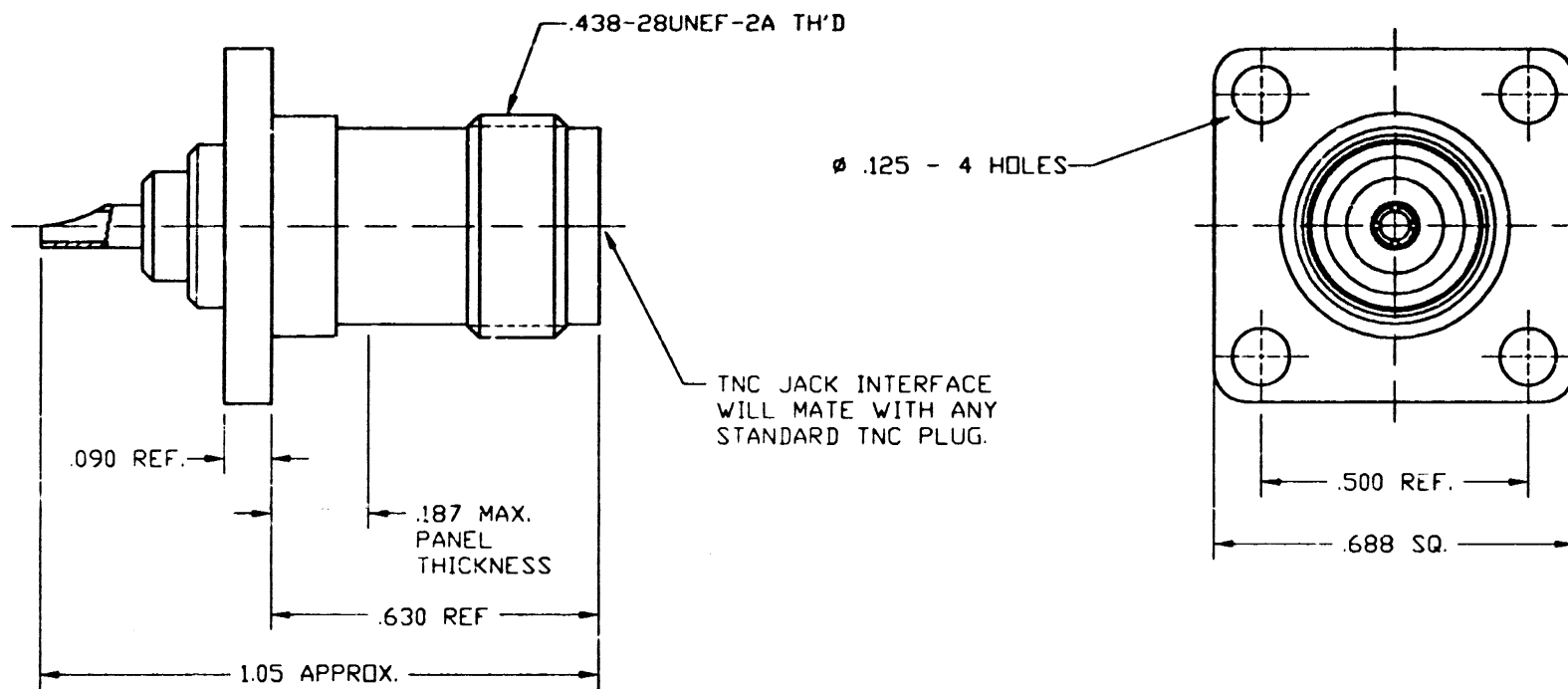
NOTES:

1. BODY, BRASS, ASTROPLATED.
FLANGE, BRASS, ASTROPLATED.
CONTACT, PHOSPHOR BRONZE, SILVER PLATED.
INSULATOR, PTFE.
2. HANDLE CAREFULLY TO AVOID DAMAGING THIN SECTIONS.
3. DO NOT SCALE THIS DRAWING.
4. UNLESS OTHERWISE SPECIFIED, ALL DIMENSIONS ARE AFTER PLATING.

31-2300-RFX

REVISIONS

DRAWING NO.	REV	DESCRIPTION	DATE	ECO	APPR
THIRD ANGLE PROJ.	A	OFFICIAL ENG. RELEASE TO MFG.	12 MAY 95	40658	CPM



MOUNTING HOLE DETAIL

UNLESS OTHERWISE SPECIFIED, DIMENSIONS ARE IN INCHES AND TOLERANCES ARE:
 2 PLACE DECIMAL ± .015 (0,381 mm)
 3 PLACE DECIMAL ± .005 (0,127 mm)
 ANGLES ± 1'

NOTICE - These drawings, specifications, or other data (1) are, and remain the property of Amphenol Corp. (2) must be returned upon request; and (3) are confidential and not to be disclosed to any person other than those to whom they are given by Amphenol Corp. The furnishing of these drawings, specifications, or other data by Amphenol Corp., or to any other person to anyone for any purpose is not to be regarded by implication or otherwise in any manner licensing, granting rights or permitting such holder or any other person to manufacture, use or sell any product, process or design, patented or otherwise, that may in any way be related to or disclosed by said drawings, specifications, or other data.

MATERIAL

REFERENCE
 EAR 964653-0
 ALLEN TELECOM

DRAWN
 C. McGRATH

DATE
 4/25/95

ENGINEER

APPROVED

CAD FILE

H:\DEPT611\TNC\031\ASSY\2300\RFXSHT2

TITLE

TNC JACK
 RECEPTACLE
 (CUSTOMER OUTLINE DWG.)

Amphenol

Amphenol Corporation
 RF/Microwave Operations
 Danbury, Conn. U.S.A. 06810

SCALE: 3:1 SHEET 2 OF 2

CODE ID
 74868

DWG SIZE
 B

DRAWING NO.
 31-2300-RFX

ISSUE
 A