

PB 448

**Snap-N-Seal®
“F” Series Male One-Piece
Compression Connectors**

Belden Snap-N-Seal® One-Piece Compression Connectors, feature a user-friendly, pre-positioned and detachably coupled plastic sleeve, incorporating time-proven advantages for a reliable connection.

Snap-N-Seal® One-Piece Connectors use the same proven 360° compression design and installation tools as other Snap-N-Seal® products.

- To reduce assembly time and simplify installation, the plastic sleeve is pre-positioned and detachably coupled to the connector body.
- True 360° compression onto cable ensures superior RF shielding performance, -90 dB effective shielding (typical on 60% bonded foil cable).
- Permanently stamped part numbers and color-coded sleeves for easy identification before and after installation.
- Installation requires one-step 1/4" - 1/4" cable preparation and standard compression tools used for all 59 & 6 series Snap-N-Seal® product families.
- Quad-sealed system prevents moisture migration.
- Incorporates a NiTin finish plus UV resistant sleeve and O-rings to provide a reliable, environmentally sealed product.
- Superb return loss performance of -30 dB to 1GHz.
- Cable retention exceeds 40 lbs. minimum as specified by the SCTE.

Physical Properties

- Nut, Post and Collar: Brass
- Nut and Collar Finish: Nickel Tin
- Post Finish: Tin Plated
- O-Rings: Ethylene Propylene

Electrical Properties

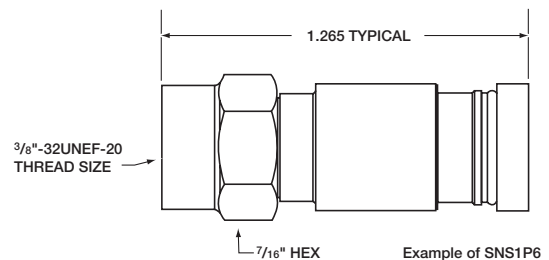
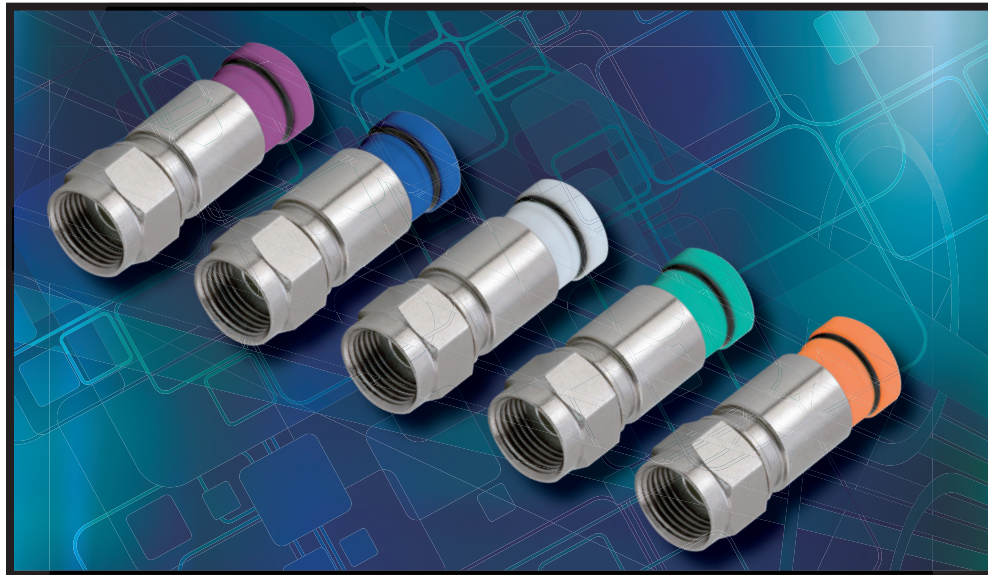
- Return Loss: ≥ -30 dB up to 1GHz Typical
- Insertion Loss: ≤ -0.18 dB up to 1GHz Typical
- RFI Shielding: -90 dB Typical (60% Bonded Foil)

Mechanical Properties

- Complies to SCTE IPS-SP-401
- Cable Retention: 40 lbs. minimum
- Cable Insertion Force: 20 lbs. maximum

Environmental Properties

- Temperature Rating -40° F (-40 °C) to 140 °F (60 °C)
- Moisture Migration: Passes ANSI/SCTE 60 2004
- Salt Fog: Passes 1,000 Hours ANSI/SCTE 143 2007



Part Number	Post I.D. (in.)	Sleeve I.D. (in.)	Sleeve Color	Tool†	Inner Pack	Outer Pack
SNS1P59	.154	.253	Orange	1+2 or 3	50	1000
SNS1P59QS	.154	.275	Green	1+2 or 3	50	1000
SNS1P59HEC	.154	.290	White	1+2 or 3	50	1000
SNS1P6	.191	.290	Blue	1+2 or 3	50	1000
SNS1P6QS	.191	.315	Violet	1+2 or 3	50	1000

†Tool: 1 = CST596 or CST596711 2 = SNSUTL 3 = IT1000