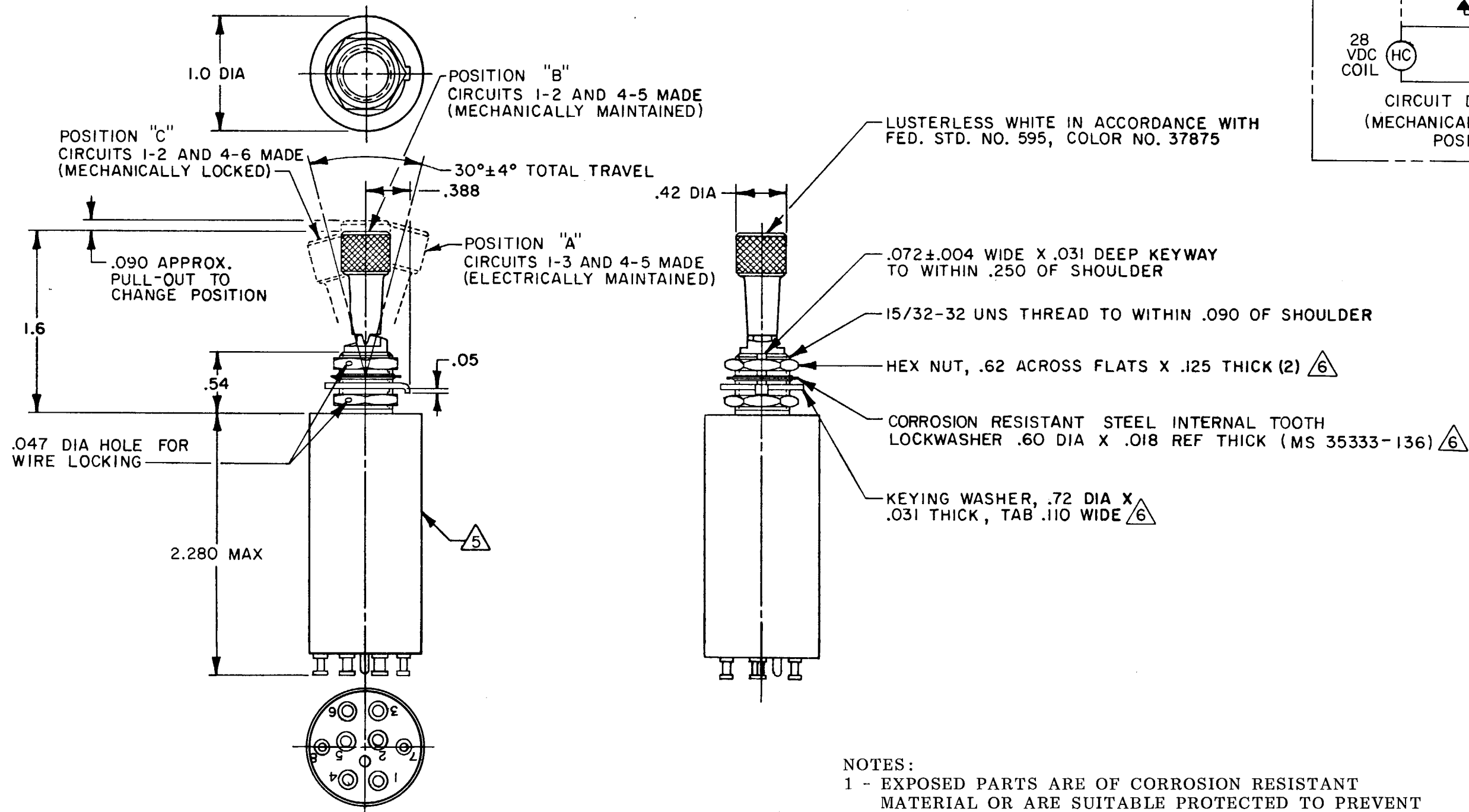
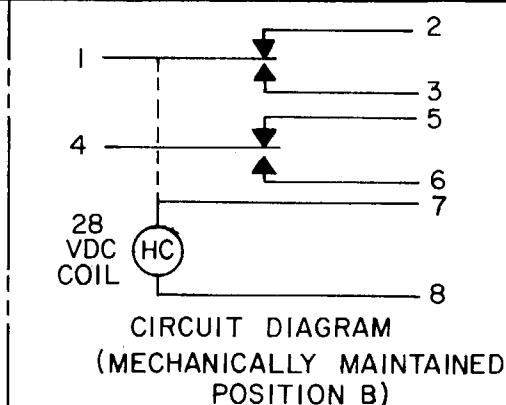


MICRO SWITCH
FREEPORT ILLINOIS U.S.A.
A DIVISION OF HONEYWELL
FED. MFG. CODE 91929

**SWITCH - TOGGLE
(MAGNETIC HOLD-IN)**

CATALOG LISTING
27ET49-T-K



NOTES:

- 1 - EXPOSED PARTS ARE OF CORROSION RESISTANT MATERIAL OR ARE SUITABLE PROTECTED TO PREVENT CORROSION. ENCLOSURE FINISHED WITH BLUE EPOXY BASED ENAMEL COLOR NO. 25184 PER FEDERAL STANDARD 595
- 2 - SWITCH SEALED PER MIL-S-5594
- 3 - HOLD IN VOLTAGE: THE MINIMUM SPECIFIED VOLTAGE AT WHICH THE LEVER WILL REMAIN ACTUATED. HOLD IN MAY OCCUR AT A LOWER VALUE. DROP OUT VOLTAGE: THE VOLTAGE RANGE IN WHICH THE LEVER WILL BE RELEASED
- 4 - CIRCUITS CAN BE TRANSFERRED MANUALLY ENERGIZING THE COIL WILL NOT CAUSE TRANSFER OF CIRCUITS
- 5 - CIRCUIT IDENTIFICATION IS SHOWN ON SWITCH
- 6 - HARDWARE MAYBE FURNISHED UNASSEMBLED PER MIL-S-5594

THIS DRAWING COVERS A PROPRIETARY ITEM AND IS THE PROPERTY OF MICRO SWITCH, A DIVISION OF HONEYWELL. THIS DRAWING IS NOT TO BE COPIED OR USED WITHOUT THE APPROVAL OF MICRO SWITCH.

THIRD ANGLE PROJECTION

SCALE FULL

DO NOT SCALE PRINT

CHARACTERISTICS

3

ELECTRICAL DATA

SOLENOID RATING AT 20° C
STEADY STATE LIMITS ----- 20-29 VDC
HOLD-IN ----- 15 VDC
DROP OUT ----- 0-15 VDC
COIL RESISTANCE ----- 220 OHM MIN
OPERATING FORCE ----- 7 LBS MAX
OVERRIDE FORCE AT 30 VDC --- 10 LBS MAX

CONTACT ARRANGEMENT
S P D T (2)

RATING IN AMPERES

VOLTAGE

SEA LEVEL

65,000 FT

28 VOLTS DC

INRUSH RES

IND

MOTOR

INRUSH RES

IND

MOTOR

INRUSH RES

IND

MOTOR

INRUSH RES

IND

MOTOR

INRUSH RES

IND

MOTOR

WEIGHT 6.0 OZ MAX