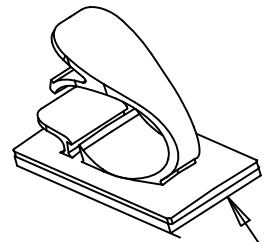
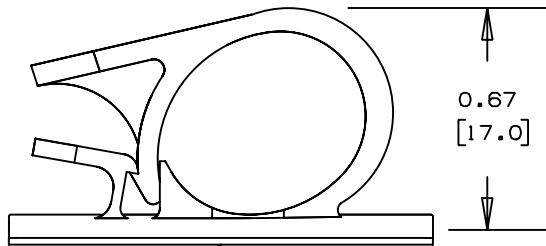


Technical drawing of a mechanical part with dimensions:

- Overall width: 1.26 [32.0]
- Overall height: 1.00 [25.4]
- Internal feature height: 0.63 [16.0]



FULL SCALE



ADHESIVE BACKING: PRESSURE SENSITIVE FOAM
0.04 [1.0] THICK WITH PROTECTIVE LINER TO
EXTEND BEYOND EDGE FORMING A TEAR TAB.

PANDUIT PART NUMBER*	MAXIMUM CABLE DIA. in. (mm)	WEIGHT lbs. (g)/100pcs
LWC50-A	0.50 (12.7)	0.84 (379)

*1) SEE CURRENT PRICE SHEET FOR PART
NUMBER SUFFIX DESIGNATION, FOR
PACKAGE SIZE.

- 2) MOUNT IS DESIGNED TO SUPPORT
0.63 lbs [284g] MAX WEIGHT ON
A CLEAN DRY SMOOTH SURFACE.

NO WARRANTY, EXPRESSED OR IMPLIED, IS MADE BY PANDUIT WITH RESPECT TO ADHESIVE BOND PERFORMANCE, AMONG OTHER THINGS, THE CONDITIONS UNDER WHICH THESE MOUNTS MAY BE APPLIED, AND/OR THE SURFACE TO WHICH THEY MAY BE APPLIED, ARE BEYOND PANDUIT'S CONTROL.

CAD FILENAME/LAYERS

PANDUIT

CORP.

LWC50-A, LATCHING WIRE CLIP

UNLESS OTHERWISE SPECIFIED,
ALL DIMENSIONS ARE GIVEN
IN INCHES, THIRD ANGLE PROJECTION.

Y - IRI

NYLON 6/6

2X

GB0161BA

DWG
A
SIZE

2	11-10-00	CGSM		CORRECTED 0.67 DIMENSION PLACEMENT	GB0161BA	2			
1	1-7-98	CGSM		CHANGED NOTE 3 ON APPLICATION INSTR.	GB0161BA	1			
R	11-5-93	JRL		INITIAL RELEASE	GB0161BA	R			
REV	DATE	BY	CHK	DESCRIPTION	ECN - R	CUST	SUP		

Mouser Electronics

Authorized Distributor

Click to View Pricing, Inventory, Delivery & Lifecycle Information:

Panduit:

[LWC50-A-T14](#)