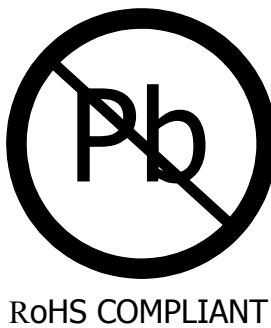
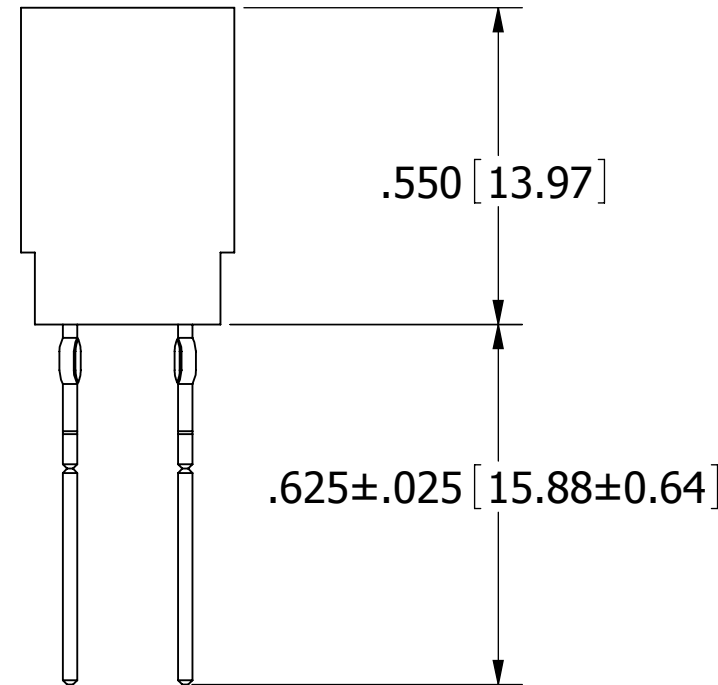
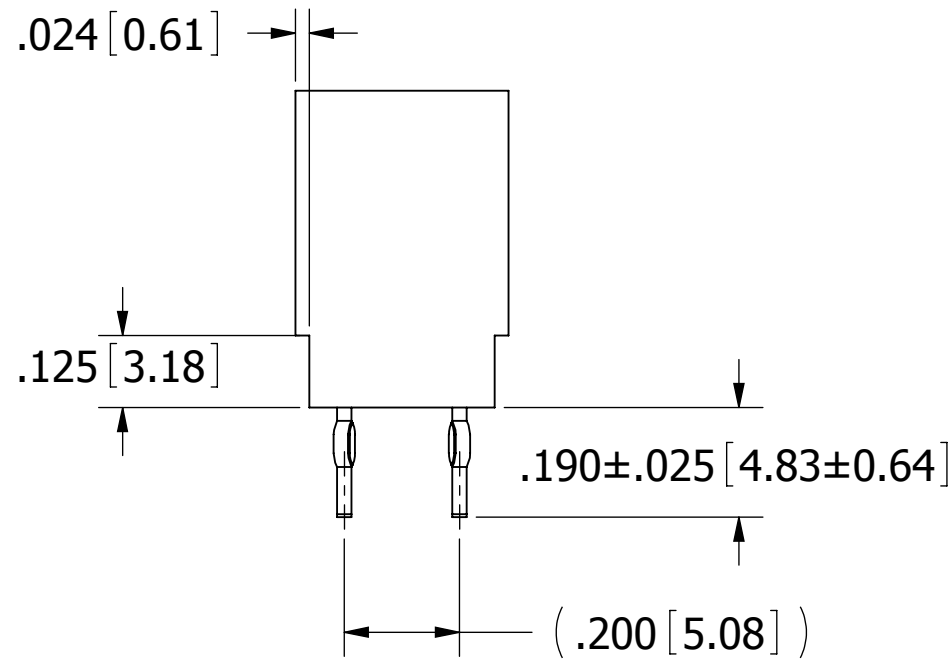
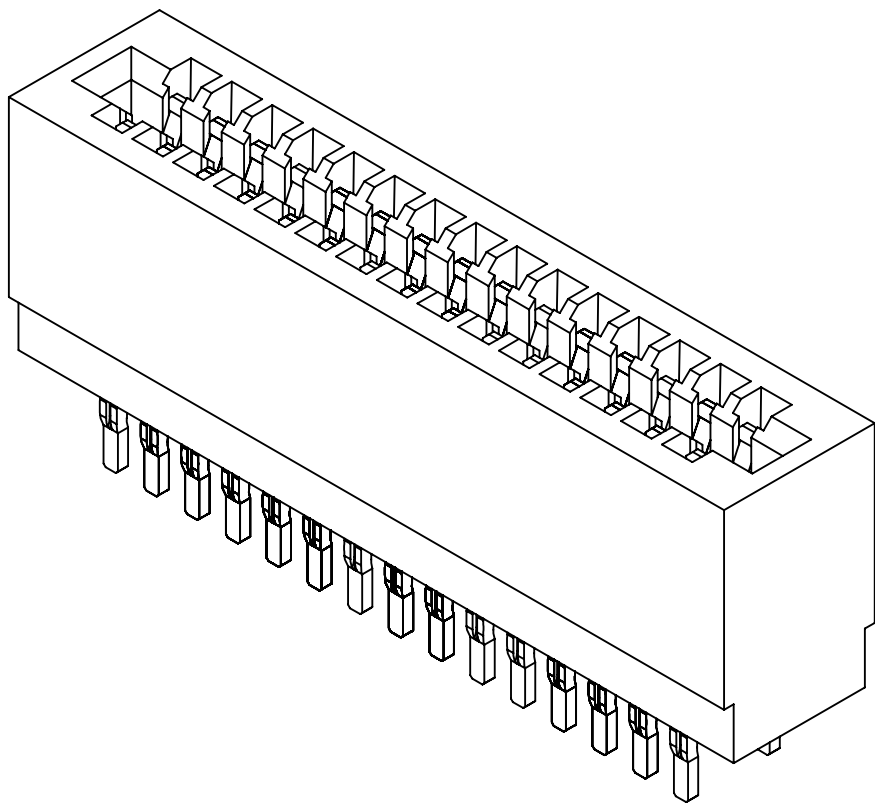
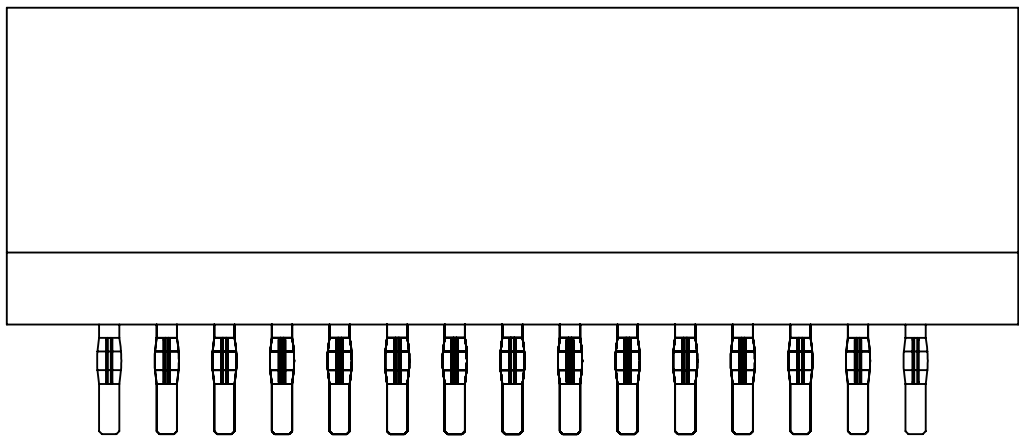
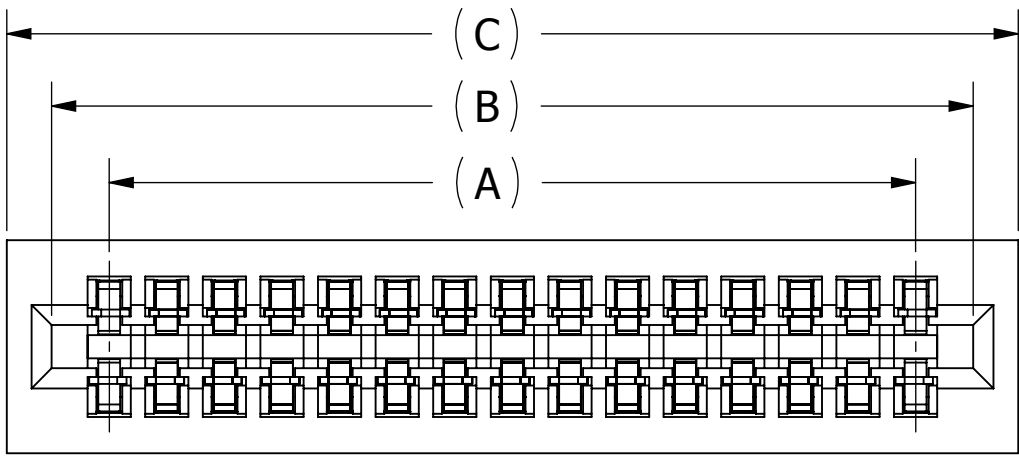


- NOTES:
- INSULATOR MATERIAL: PBT
 - CONTACT MATERIAL: PHOSPHOR BRONZE
 - PLATING: .000050" MIN NICKEL UNDERPLATE
CONTACT SURFACE: .000030" GOLD
TERMINATION: .000100" PURE TIN, MATTE
 - OPERATING TEMPERATURE: -65°C TO +125°C
 - PROCESSING TEMP: WAVE/MANUAL SOLDERING ONLY
 - UL FLAMMABILITY RATING: 94V-0
 - DIELECTRIC WITHSTANDING VOLTAGE: 1350 VAC AT SEA LEVEL
 - CURRENT RATING: 3 AMP
 - CONTACT RESISTANCE: 30 MILLI OHMS MAX
 - INSULATION RESISTANCE: 5000 MEGA OHMS
 - DURABILITY: 500 CYCLES MIN
 - CONNECTOR IDENTIFICATION: THE PART SHALL BE MARKED WITH A PART NUMBER AND LOT CODE
 - BOARD THICKNESS ACCOMMODATED: .062±.008[1.57±0.20]
 - INSERTION FORCE: 16 OZ MAX PER CONTACT PAIR WHEN USING A .062[1.57] TEST BLADE
INTERNAL INSPECTION TO BE PER SULLIN'S WORK INSTRUCTION WI7.3-01
 - WITHDRAWAL FORCE: 1 OZ MIN PER CONTACT PAIR USING .062[1.57] PCB
 - HOLE SIZE REQUIREMENTS:
DRILLED HOLE DIAMETER: .0453±.0010[1.150±0.025]
PLATING: .001[0.03] TO .003[0.08] COPPER, .0003[0.008] MINIMUM TIN
FINISHED HOLE DIAMETER: .040±.003[1.02±0.08]
 - RECOMMENDED MOTHER BOARD THICKNESS: .093[2.36] TO .125[3.18] THICK
 - MODIFICATION: SEE PART NUMBER CODING



CUSTOMER COPY

UNLESS OTHERWISE SPECIFIED: DIMENSIONS ARE IN INCHES [MM]		DRAWN	DATE	NAME		
			05/04/06	MNH		
TOLERANCES: ANGULAR: ± 1° DECIMALS .XX=± .02 [.5] .XXX=± .005 [.13] .XXXX=± .0005 [.013]		THE INFORMATION HEREIN CONTAINS PROPRIETARY INFORMATION OF SULLINS ELECTRONICS AND IS NOT TO BE REPRODUCED, USED OR DISCLOSED TO OTHERS FOR ANY PURPOSE EXCEPT AS SPECIFICALLY AUTHORIZED IN WRITING BY AN OFFICER OF SULLINS ELECTRONICS.			TITLE EDGECARD, .100 CC PRESS FIT	
					PART NUMBER ECC _ _ DJ _ _ (-S1136)	
		SIZE	CAGE CODE	DWG. NO.	REV	
		C	54453	C10713	F	
		SCALE: 3:1		SHEET 1 OF 5		



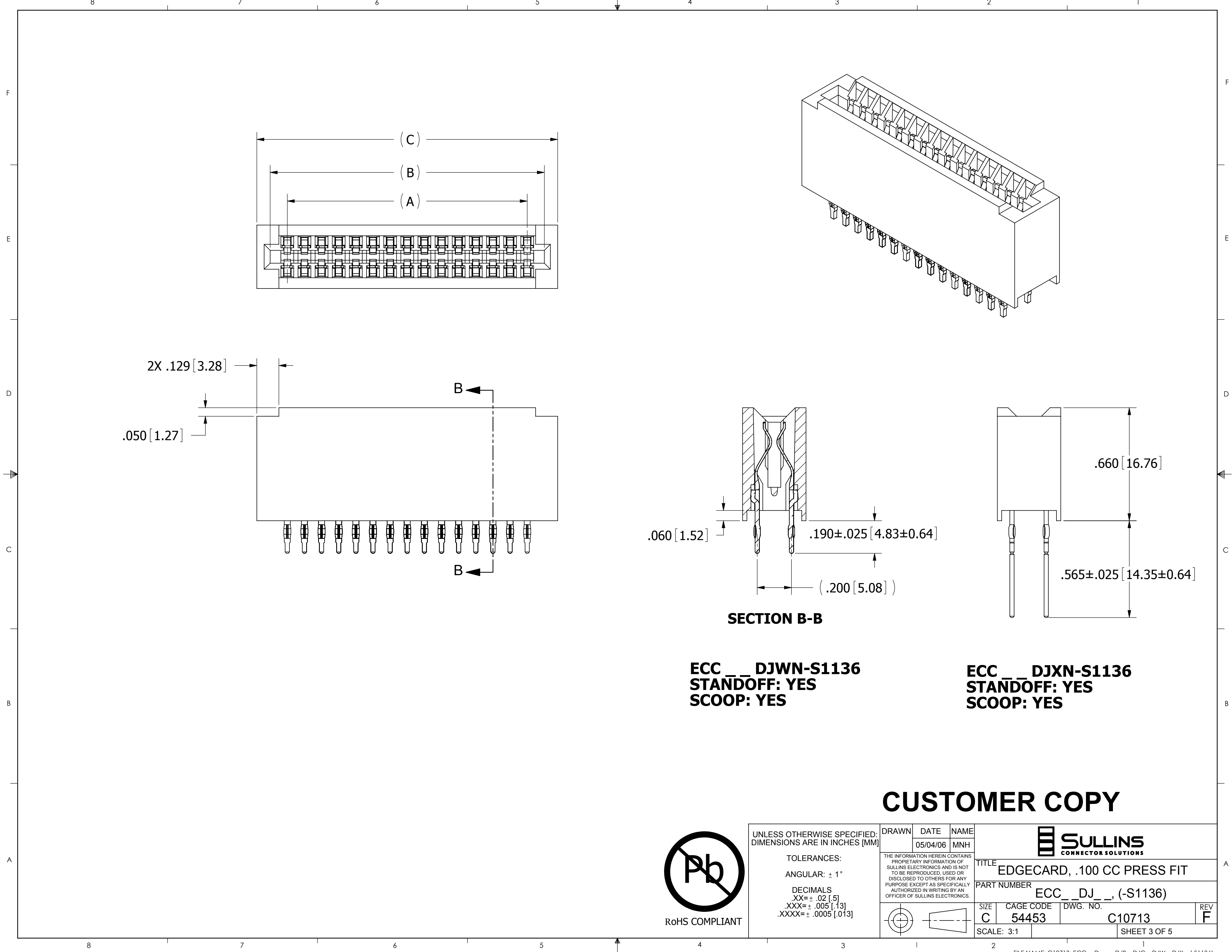
ECC _ _ DJBN
STANDOFF: NO
SCOOP: NO

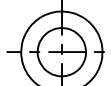
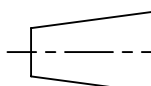
ECC _ _ DJCN
STANDOFF: NO
SCOOP: NO

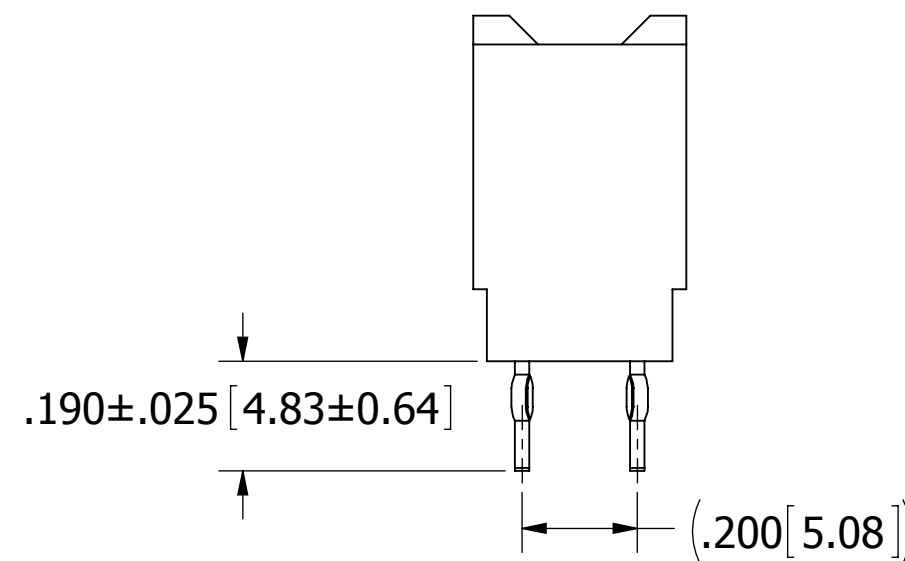
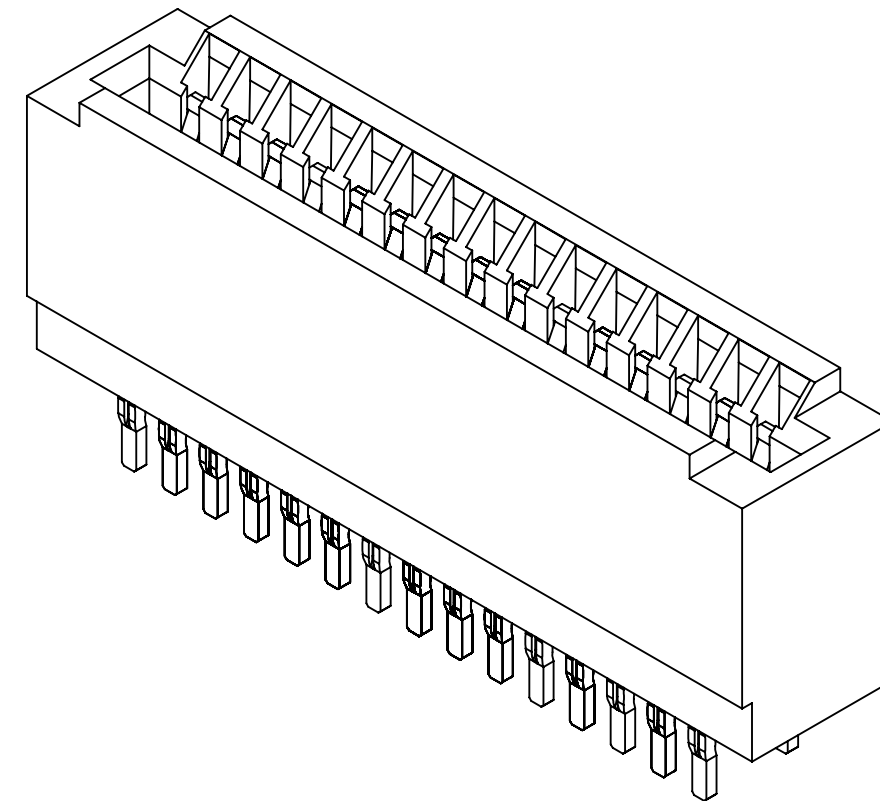
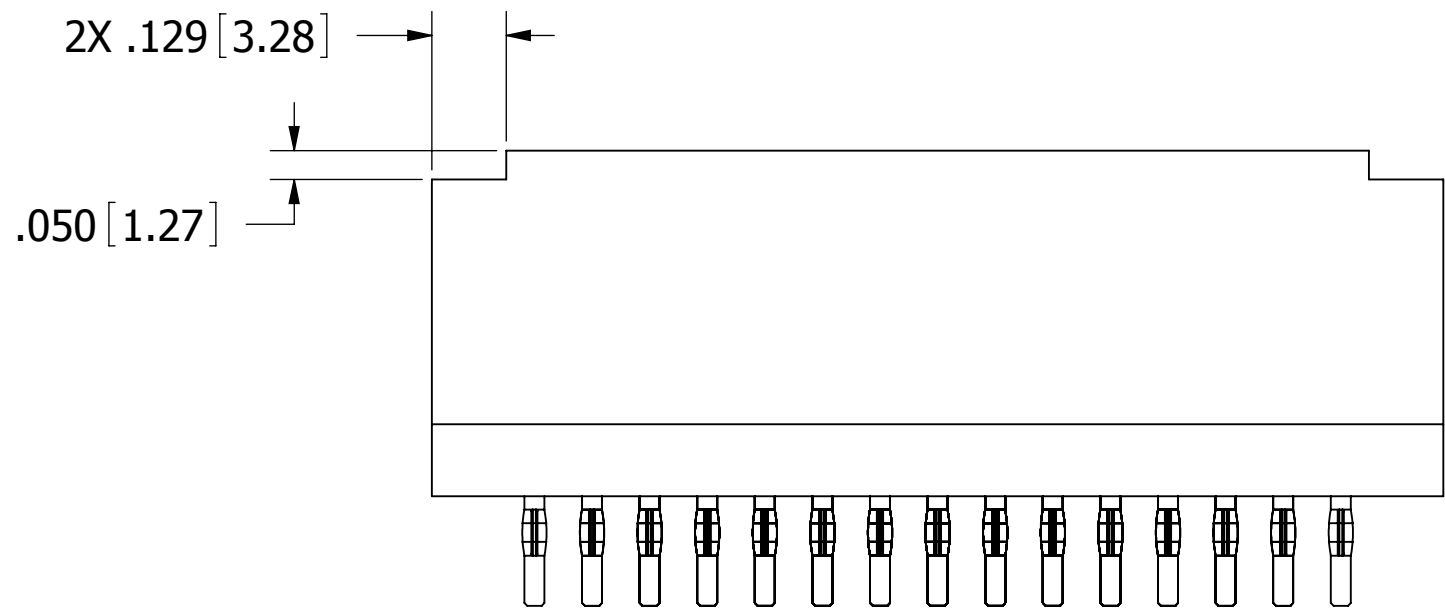
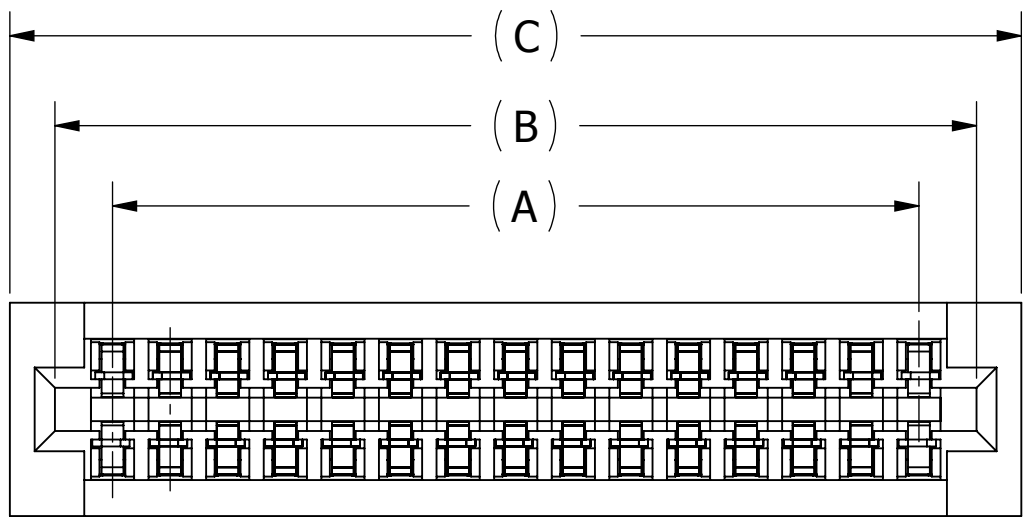
CUSTOMER COPY



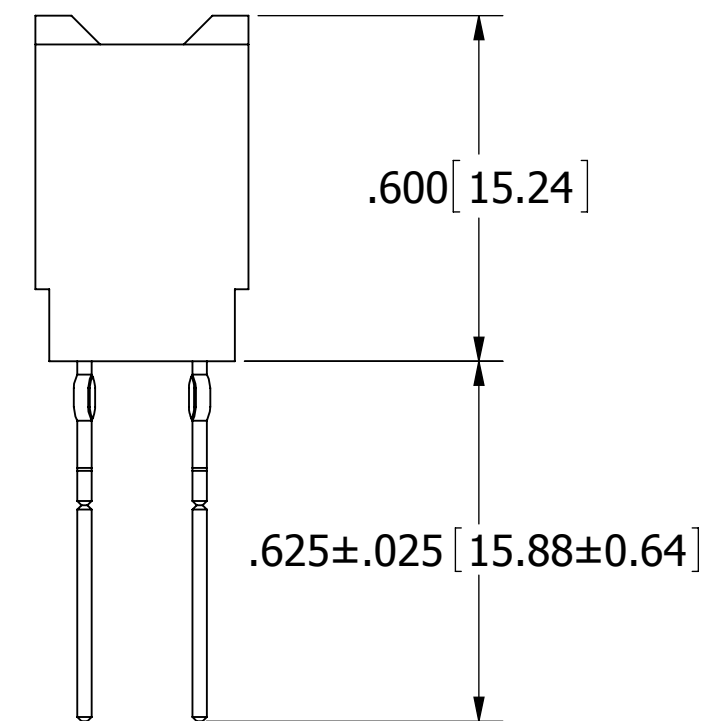
UNLESS OTHERWISE SPECIFIED: DIMENSIONS ARE IN INCHES [MM]		DRAWN	DATE	NAME		
			05/04/06	MNH		
TOLERANCES: ANGULAR: ± 1° DECIMALS .XX= ± .02 [.5] .XXX= ± .005 [.13] .XXXX= ± .0005 [.013]		THE INFORMATION HEREIN CONTAINS PROPRIETARY INFORMATION OF SULLINS ELECTRONICS AND IS NOT TO BE REPRODUCED, USED OR DISCLOSED TO OTHERS FOR ANY PURPOSE EXCEPT AS SPECIFICALLY AUTHORIZED IN WRITING BY AN OFFICER OF SULLINS ELECTRONICS.			TITLE EDGECARD, .100 CC PRESS FIT	
					PART NUMBER ECC _ _ DJ _ _ , (-S1136)	
		SIZE	CAGE CODE	DWG. NO.	REV	
		C	54453	C10713	F	
SCALE: 3:1		SHEET 2 OF 5				



UNLESS OTHERWISE SPECIFIED: DIMENSIONS ARE IN INCHES [MM]		DRAWN	DATE	NAME		
			05/04/06	MNH		
TOLERANCES: ANGULAR: $\pm 1^\circ$ DECIMALS XX= $\pm .02 [.5]$.XXX= $\pm .005 [.13]$.XXXX= $\pm .0005 [.013]$		THE INFORMATION HEREIN CONTAINS PROPRIETARY INFORMATION OF SULLINS ELECTRONICS AND IS NOT TO BE REPRODUCED, USED OR DISCLOSED TO OTHERS FOR ANY PURPOSE EXCEPT AS SPECIFICALLY AUTHORIZED IN WRITING BY AN OFFICER OF SULLINS ELECTRONICS.			TITLE EDGECARD, .100 CC PRESS FIT	
		 			PART NUMBER ECC __ DJ __, (-S1136)	
		SIZE C	CAGE CODE 54453	DWG. NO. C10713	REV F	
		SCALE: 3:1		SHEET 3 OF 5		



ECC__DJBN-S1136
STANDOFF: NO
SCOOP: YES



ECC__DJCN-S1136
STANDOFF: NO
SCOOP: YES

CUSTOMER COPY



UNLESS OTHERWISE SPECIFIED: DIMENSIONS ARE IN INCHES [MM]		DRAWN	DATE	NAME		
			05/04/06	MNH		
TOLERANCES: ANGULAR: ± 1° DECIMALS XX= ± .02 [.5] .XXX= ± .005 [.13] .XXXX= ± .0005 [.013]		THE INFORMATION HEREIN CONTAINS PROPRIETARY INFORMATION OF SULLINS ELECTRONICS AND IS NOT TO BE REPRODUCED, USED OR DISCLOSED TO OTHERS FOR ANY PURPOSE EXCEPT AS SPECIFICALLY AUTHORIZED IN WRITING BY AN OFFICER OF SULLINS ELECTRONICS.			TITLE EDGECARD, .100 CC PRESS FIT	
					PART NUMBER ECC__DJ__, (-S1136)	
		SIZE	CAGE CODE	DWG. NO.	REV	
		C	54453	C10713	F	
SCALE: 3:1		SHEET 4 OF 5				

PART NUMBER	NO. OF POSITIONS	A±.008[0.20]		B±.008[0.20]		C±.015[0.38]	
		INCH	MM	INCH	MM	INCH	MM
ECC05D _ _ _ _	5	0.400	10.16	0.600	15.24	0.756	19.20
ECC06D _ _ _ _	6	0.500	12.70	0.700	17.78	0.856	21.74
ECC07D _ _ _ _	7	0.600	15.24	0.800	20.32	0.956	24.28
ECC08D _ _ _ _	8	0.700	17.78	0.900	22.86	1.056	26.82
ECC09D _ _ _ _	9	0.800	20.32	1.000	25.40	1.156	29.36
ECC10D _ _ _ _	10	0.900	22.86	1.100	27.94	1.256	31.90
ECC11D _ _ _ _	11	1.000	25.40	1.200	30.48	1.356	34.44
ECC12D _ _ _ _	12	1.100	27.94	1.300	33.02	1.456	36.98
ECC13D _ _ _ _	13	1.200	30.48	1.400	35.56	1.556	39.52
ECC14D _ _ _ _	14	1.300	33.02	1.500	38.10	1.656	42.06
ECC15D _ _ _ _	15	1.400	35.56	1.600	40.64	1.756	44.60
ECC16D _ _ _ _	16	1.500	38.10	1.700	43.18	1.856	47.14
ECC17D _ _ _ _	17	1.600	40.64	1.800	45.72	1.956	49.68
ECC18D _ _ _ _	18	1.700	43.18	1.900	48.26	2.056	52.22
ECC19D _ _ _ _	19	1.800	45.72	2.000	50.80	2.156	54.76
ECC20D _ _ _ _	20	1.900	48.26	2.100	53.34	2.256	57.30
ECC21D _ _ _ _	21	2.000	50.80	2.200	55.88	2.356	59.84
ECC22D _ _ _ _	22	2.100	53.34	2.300	58.42	2.456	62.38
ECC23D _ _ _ _	23	2.200	55.88	2.400	60.96	2.556	64.92
ECC24D _ _ _ _	24	2.300	58.42	2.500	63.50	2.656	67.46
ECC25D _ _ _ _	25	2.400	60.96	2.600	66.04	2.756	70.00
ECC26D _ _ _ _	26	2.500	63.50	2.700	68.58	2.856	72.54
ECC27D _ _ _ _	27	2.600	66.04	2.800	71.12	2.956	75.08
ECC28D _ _ _ _	28	2.700	68.58	2.900	73.66	3.056	77.62
ECC29D _ _ _ _	29	2.800	71.12	3.000	76.20	3.156	80.16
ECC30D _ _ _ _	30	2.900	73.66	3.100	78.74	3.256	82.70
ECC31D _ _ _ _	31	3.000	76.20	3.200	81.28	3.356	85.24
ECC32D _ _ _ _	32	3.100	78.74	3.300	83.82	3.456	87.78
ECC33D _ _ _ _	33	3.200	81.28	3.400	86.36	3.556	90.32
ECC34D _ _ _ _	34	3.300	83.82	3.500	88.90	3.656	92.86
ECC35D _ _ _ _	35	3.400	86.36	3.600	91.44	3.756	95.40
ECC36D _ _ _ _	36	3.500	88.90	3.700	93.98	3.856	97.94
ECC37D _ _ _ _	37	3.600	91.44	3.800	96.52	3.956	100.48
ECC38D _ _ _ _	38	3.700	93.98	3.900	99.06	4.056	103.02
ECC39D _ _ _ _	39	3.800	96.52	4.000	101.60	4.156	105.56
ECC40D _ _ _ _	40	3.900	99.06	4.100	104.14	4.256	108.10
ECC41D _ _ _ _	41	4.000	101.60	4.200	106.68	4.356	110.64
ECC42D _ _ _ _	42	4.100	104.14	4.300	109.22	4.456	113.18
ECC43D _ _ _ _	43	4.200	106.68	4.400	111.76	4.556	115.72
ECC44D _ _ _ _	44	4.300	109.22	4.500	114.30	4.656	118.26
ECC45D _ _ _ _	45	4.400	111.76	4.600	116.84	4.756	120.80
ECC46D _ _ _ _	46	4.500	114.30	4.700	119.38	4.856	123.34
ECC47D _ _ _ _	47	4.600	116.84	4.800	121.92	4.956	125.88
ECC48D _ _ _ _	48	4.700	119.38	4.900	124.46	5.056	128.42
ECC49D _ _ _ _	49	4.800	121.92	5.000	127.00	5.156	130.96
ECC50D _ _ _ _	50	4.900	124.46	5.100	129.54	5.256	133.50
ECC51D _ _ _ _	51	5.000	127.00	5.200	132.08	5.356	136.04
ECC52D _ _ _ _	52	5.100	129.54	5.300	134.62	5.456	138.58
ECC53D _ _ _ _	53	5.200	132.08	5.400	137.16	5.556	141.12
ECC54D _ _ _ _	54	5.300	134.62	5.500	139.70	5.656	143.66
ECC55D _ _ _ _	55	5.400	137.16	5.600	142.24	5.756	146.20
ECC56D _ _ _ _	56	5.500	139.70	5.700	144.78	5.856	148.74
ECC57D _ _ _ _	57	5.600	142.24	5.800	147.32	5.956	151.28
ECC58D _ _ _ _	58	5.700	144.78	5.900	149.86	6.056	153.82
ECC59D _ _ _ _	59	5.800	147.32	6.000	152.40	6.156	156.36
ECC60D _ _ _ _	60	5.900	149.86	6.100	154.94	6.256	158.90

PART NUMBER CODING

ECC _ _ _ _ D _ _ _ -S1136

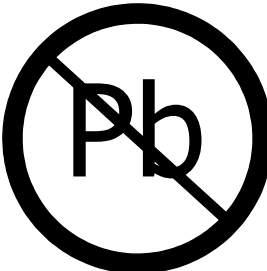
MODIFICATION
OMIT FOR STANDARD
S1136 = WITH SCOOPS (SEE PAGE 3 AND 4)

MOUNTING STYLE
N = NO MOUNTING

NUMBER OF POSITIONS
(CONTACT PER ROW)

TERMINATION
JB = NO STANDOFF, .190 TAIL LENGTH (SEE PAGE 2)
JC = NO STANDOFF, .625 TAIL LENGTH (SEE PAGE 2)
JW = WITH STANDOFF, .190 TAIL LENGTH (SEE PAGE 1)
JX = WITH STANDOFF, .565 TAIL LENGTH (SEE PAGE 1)

CUSTOMER COPY



UNLESS OTHERWISE SPECIFIED: DIMENSIONS ARE IN INCHES [MM]		DRAWN	DATE	NAME		
			05/04/06	MNH		
TOLERANCES: ANGULAR: ± 1° DECIMALS .XX= ± .02 [.5] .XXX= ± .005 [.13] .XXXX= ± .0005 [.013]		THE INFORMATION HEREIN CONTAINS PROPRIETARY INFORMATION OF SULLINS ELECTRONICS AND IS NOT TO BE REPRODUCED, USED OR DISCLOSED TO OTHERS FOR ANY PURPOSE EXCEPT AS SPECIFICALLY AUTHORIZED IN WRITING BY AN OFFICER OF SULLINS ELECTRONICS.			TITLE EDGE CARD, .100 CC PRESS FIT	
					PART NUMBER ECC _ _ DJ _ _ (-S1136)	
		SIZE	CAGE CODE	DWG. NO.	REV	
		C	54453	C10713	F	
		SCALE: 3:1		SHEET 5 OF 5		