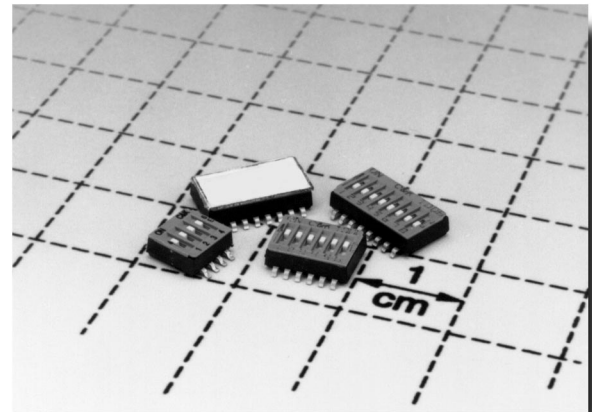


## Features/Benefits

- Bifurcated contact for increased electrical reliability
- Tin-lead plated terminals for reliable solder coverage
- Process sealed for surface mount soldering and washing processes
- Available in tape and reel

## Typical Applications

- Hand-held electronic devices
- Portable computer and electronic devices
- Instrumentation and controls



## How To Order

Complete part numbers for TD Series Ultraminiature Surface Mount Half-pitch DIP Switches are shown below. All switches supplied in 'OFF' position in rigid dispensing tube. Also available in tape and reel packaging per EIA 481, consult Customer Service Center.

## Specifications

SWITCH FUNCTION: SPST—4, 6, 8 & 10 positions.  
 CONTACT RATING: 0.4 VA max. @ 20 V DC.  
 MECHANICAL & ELECTRICAL LIFE: 1,000 cycles.  
 CONTACT RESISTANCE: 50 milliohms max.  
 INSULATION RESISTANCE: 100 megohms @ 250 V AC min.  
 DIELECTRIC STRENGTH: 250 V RMS min. @ sea level.  
 CAPACITANCE: 5 pF max. between adjacent terminals.  
 STORAGE TEMPERATURE: -40° C to 85° C.  
 OPERATING TEMPERATURE: -20° C to 85° C.  
 SOLDERABILITY: Per MIL-STD-202F method 208D, or  
 EIA RS-186E method 9 (1 hour steam aging).  
 PACKAGING: Switches supplied in rigid dispensing tubes in  
 full-tube quantities only; this may affect order quantity.  
 Number of switches per tube varies with model, consult  
 Customer Service Center. Tape and reel packaging also  
 available, see page L-39 for drawings and reel information.

## Materials

CASE & COVER: Glass filled nylon, flame retardant, heat stabilized  
 (UL 94V-0).  
 ACTUATOR: LCP (UL 94V-0).  
 CONTACTS: Copper alloy, with gold plate over nickel plate.  
 TERMINALS: Copper alloy, with tin-lead alloy over nickel plate.  
 All terminals are insert molded.  
 TAPE SEAL: Removable Polyimide cover tape.

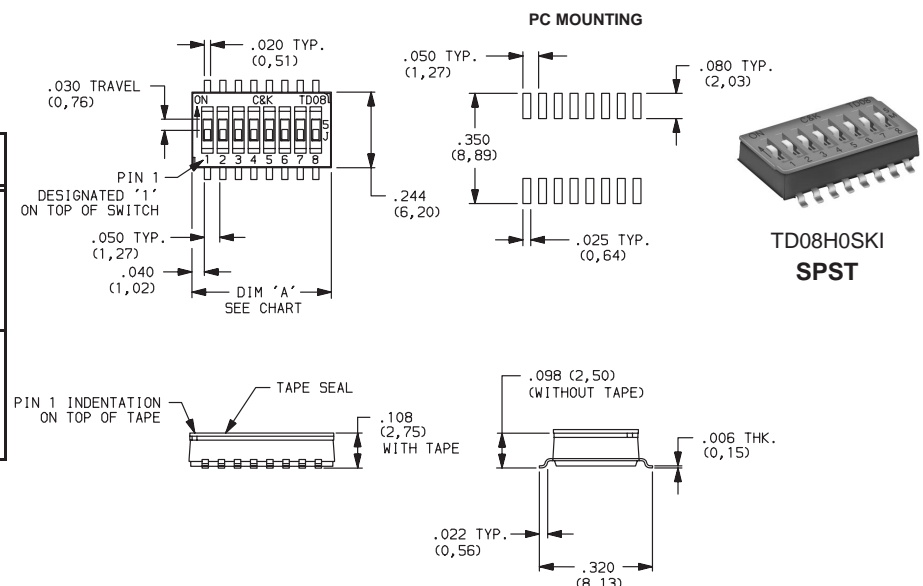
**NOTE:** Specifications and materials listed above are for switches with standard options.  
 For information on specific and custom switches, consult Customer Service Center.

PART NUMBER	NO. POS.	DIM. 'A'	QUANTITY PER TUBE
TD04H0SK1	4	.250 (6,35)	76
TD06H0SK1	6	.350 (8,89)	54
TD08H0SK1	8	.450 (11,43)	43
TD10H0SK1	10	.550 (13,97)	35

Schematic

SPST



**NOTE:** Shown without tape seal.