



SAW Components

Data Sheet X 6965 D

Data Sheet

A large, stylized, 3D graphic of the word "EPCOS" in a light gray, sans-serif font. The letters are tilted and appear to be floating or emerging from a dark, textured background that resembles a globe or a complex circuit board. The overall effect is a sense of depth and modernity.



SAW Components

X 6965 D

Bandpass Filter

44,00 MHz

Data Sheet

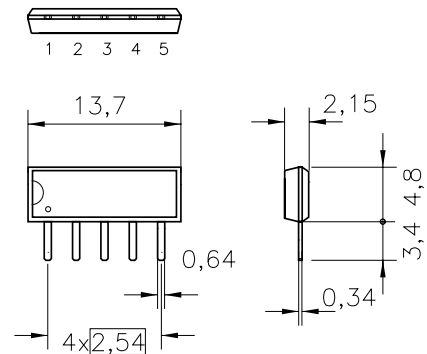
Duroplast package **SIP5D**

Features

- IF filter for digital cable TV
- Standard IC package

Terminals

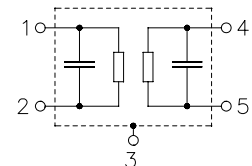
- Tinned CuFe alloy



Dimensions in mm, approx. weight 0,5 g

Pin configuration

- | | |
|---|-----------------------|
| 1 | Input |
| 2 | Input - ground |
| 3 | Chip carrier - ground |
| 4 | Output |
| 5 | Output |



Type	Ordering code	Marking and package according to	Packing according to
X 6965 D	B39440-X6965-D100	C61157-A1-A18	F61074-V8049-Z000

Maximum ratings

Operable temperature range	T_A	-25/+65	°C	
Storage temperature range	T_{stg}	-40/+85	°C	
DC voltage	V_{DC}	12	V	between any terminals
AC voltage	V_{pp}	10	V	between any terminals



SAW Components	X 6965 D
Bandpass Filter	44,00 MHz

Data Sheet

Characteristics

Reference temperature:	$T_A = 25 (45) ^\circ \text{C}$
Terminating source impedance:	$Z_S = 50 \Omega$
Terminating load impedance:	$Z_L = 2 \text{ k}\Omega \parallel 3 \text{ pF}$

		min.	typ.	max.	
Center frequency	f_C	—	(44,00)	—	MHz
(center between 3 dB points)					
Insertion attenuation	α				
Reference level for the following data	44,06 (44,00) MHz	13,2	14,7	16,2	dB
Pass bandwidth					
$\alpha_{\text{rel}} \leq 3 \text{ dB}$	$B_{3\text{dB}}$	—	6,0	—	MHz
$\alpha_{\text{rel}} \leq 30 \text{ dB}$	$B_{30\text{dB}}$	—	7,6	—	MHz
Amplitude ripple	$\Delta\alpha$				
	41,53 ... 46,59 MHz	—	0,4	—	dB
Relative attenuation	α_{rel}				
	41,53 (41,47) MHz	—	0,3	—	dB
	46,59 (46,53) MHz	—	0,4	—	dB
	41,06 (41,00) MHz	1,5	2,7	3,8	dB
	47,06 (47,00) MHz	1,8	3,0	4,2	dB
	47,31 (47,25) MHz	—	8,3	—	dB
	39,81 (39,75) MHz	40,0	55,0	—	dB
Lower sidelobe					
	35,06 ... 39,46 (35,00 ... 39,40) MHz	43,0	47,0	—	dB
	39,46 ... 40,06 (39,40 ... 40,00) MHz	38,0	47,0	—	dB
Upper sidelobe					
	48,06 ... 50,06 (48,00 ... 50,00) MHz	37,0	42,0	—	dB
	50,06 ... 55,06 (50,00 ... 55,00) MHz	43,0	51,0	—	dB
Reflected wave signal suppression					
1,3 μs ... 6,0 μs after main pulse (test pulse 250 ns, carrier frequency 44,06 MHz)		42,0	52,0	—	dB
Feedthrough signal suppression					
1,3 μs ... 1,2 μs before main pulse (test pulse 250 ns, carrier frequency 44,06 MHz)		50,0	56,0	—	dB
Group delay ripple (p-p)	$\Delta\tau$				
	41,53 ... 46,59 MHz	—	30	—	ns
Impedance at 44,06 MHz					
Input: $Z_{\text{IN}} = R_{\text{IN}} \parallel C_{\text{IN}}$		—	1,3 \parallel 16,1	—	k Ω \parallel pF
Output: $Z_{\text{OUT}} = R_{\text{OUT}} \parallel C_{\text{OUT}}$		—	1,1 \parallel 5,6	—	k Ω \parallel pF
Temperature coefficient of frequency	TC_f	—	-72	—	ppm/K



SAW Components

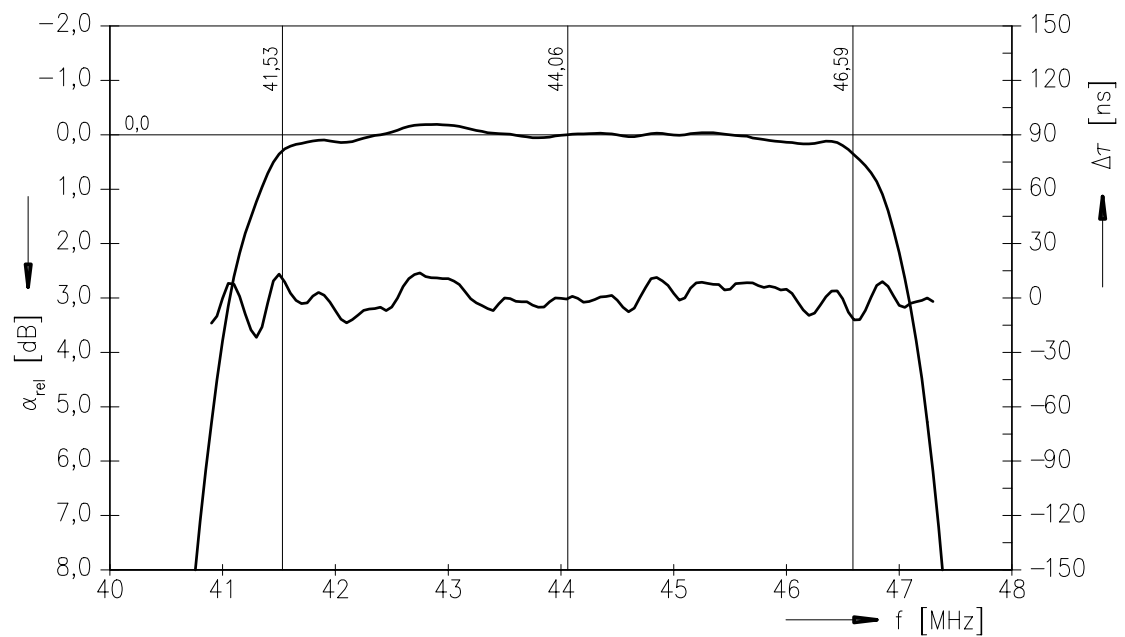
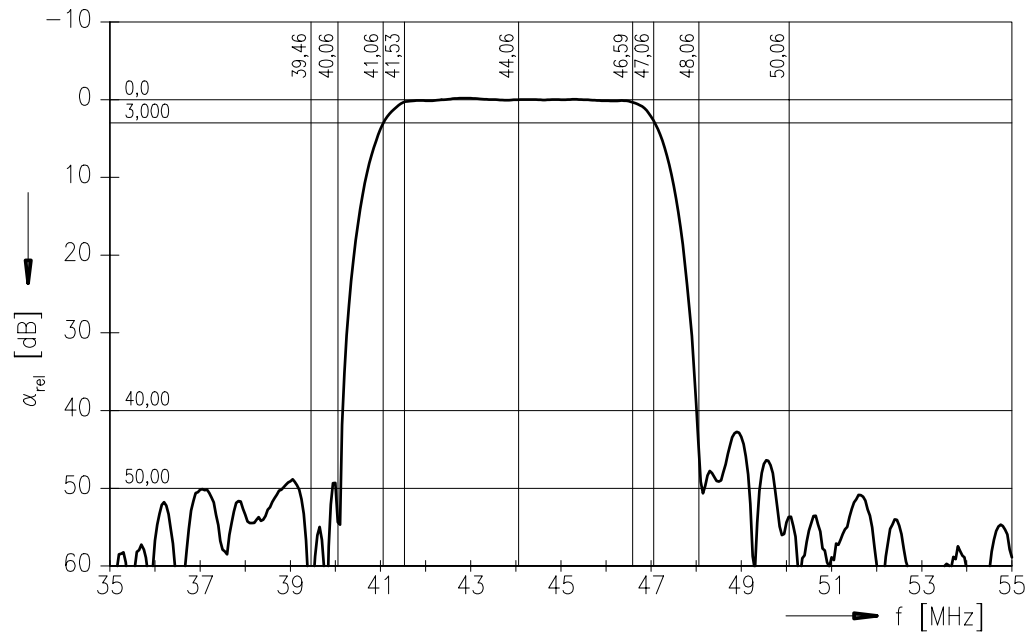
X 6965 D

Bandpass Filter

44,00 MHz

Data Sheet

Frequency response





SAW Components

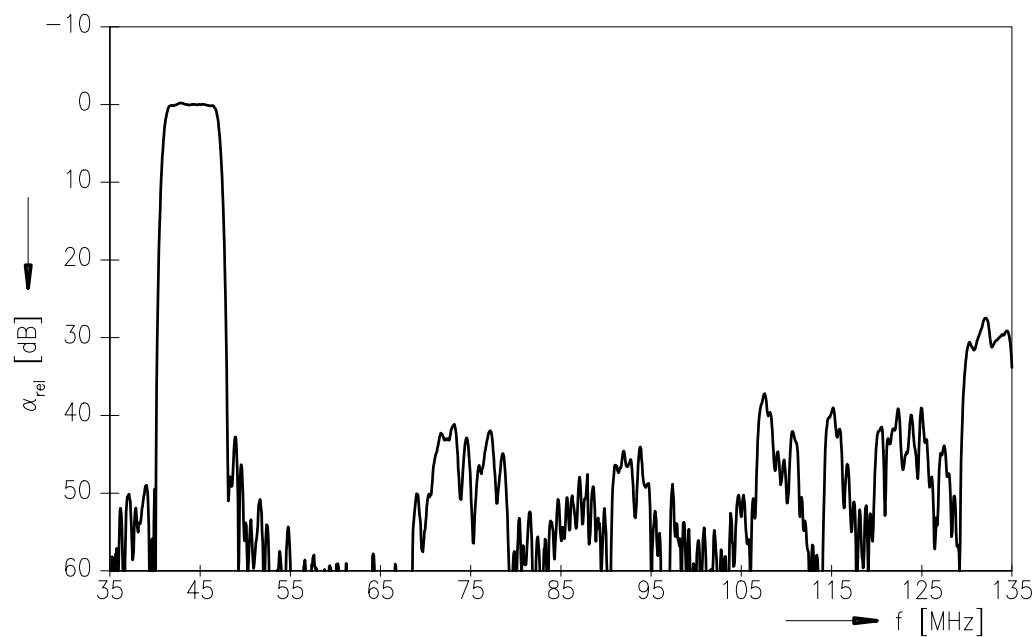
X 6965 D

Bandpass Filter

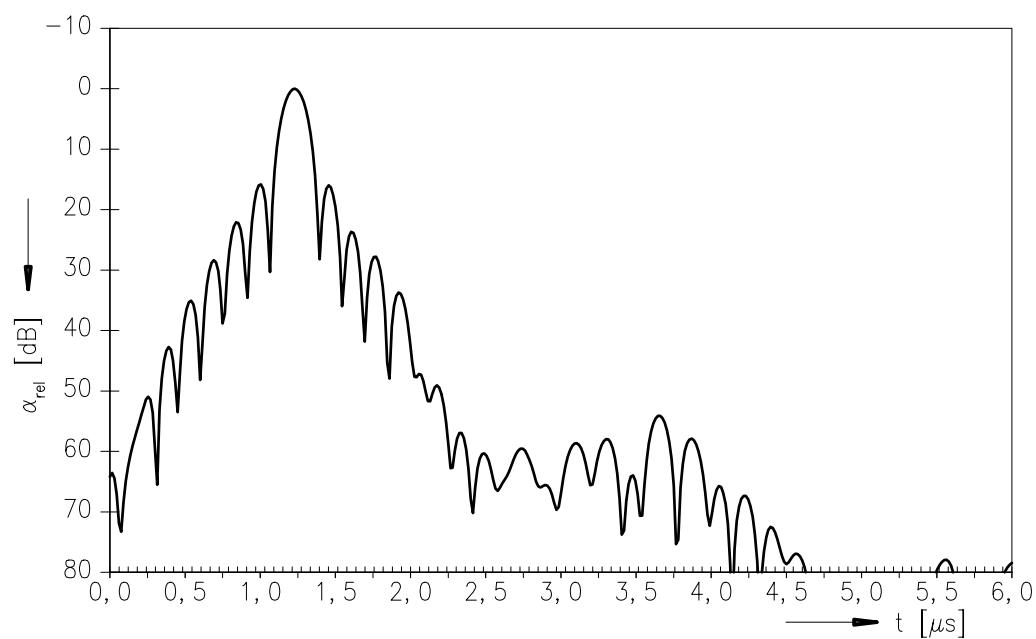
44,00 MHz

Data Sheet

Frequency response



Time domain response





SAW Components	X 6965 D
Bandpass Filter	44,00 MHz

Data Sheet

Published by EPCOS AG
Surface Acoustic Wave Components Division, SAW CE MM PD
P.O. Box 80 17 09, D-81617 München

© EPCOS AG 2001. All Rights Reserved.

As far as patents or other rights of third parties are concerned, liability is only assumed for components per se, not for applications, processes and circuits implemented within components or assemblies.

The information describes the type of component and shall not be considered as assured characteristics.

Terms of delivery and rights to change design reserved.

For questions on technology, prices and delivery please contact the sales offices of EPCOS AG or the international representatives.

Due to technical requirements components may contain dangerous substances. For information on the type in question please also contact one of our sales offices.