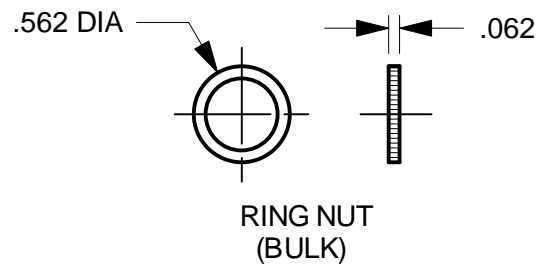
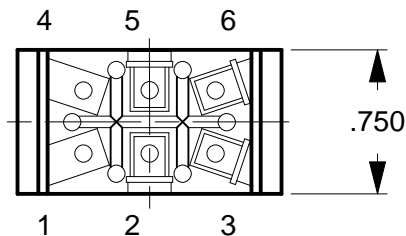
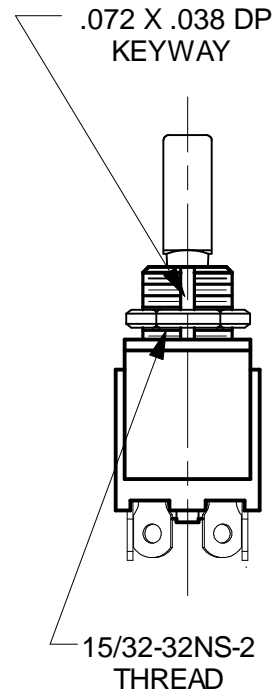
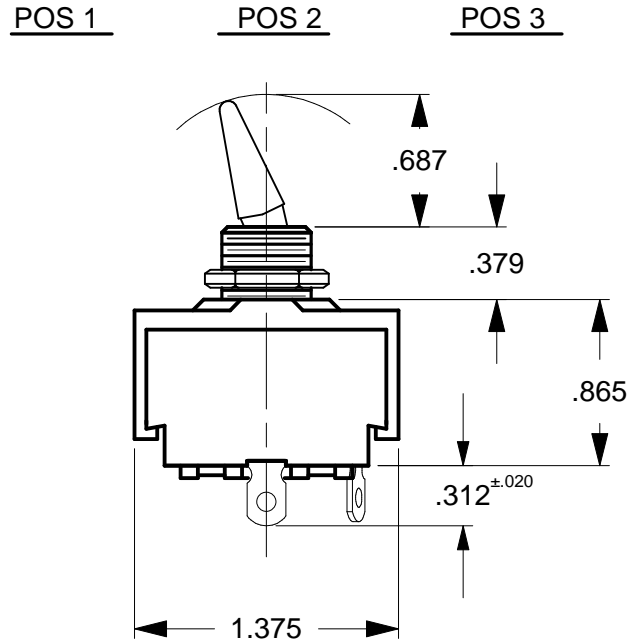


DO NOT SCALE DRAWING WORK TO FIGURE


DWG NO. 2GK50-D-1B-B-XHP1		REV. —
LET	REVISIONS	DATE



RATING:	UL & CSA
15 AMP	125VAC
10 AMP	250 VAC
3/4 HP	125-250VAC

OPERATES:		
POSITIONS OF TOGGLE		
POS 1	POS 2	POS 3
ON	NONE	OFF
T2 TO 3		
T5 TO 6		

- NOTES:
- BRASS SOLDER LUG TERMINALS AT T2,3,5 AND 6
 - ACTUATOR AND BUSHING COLOR IS BLACK
 - SPECIAL P/N FOR HP/AGILENT4.
(1) HEX NUT NICKEL PLATED ASSEMBLED
(1) RING NUT, BLACK PLATIC (BULK)

DIMENSIONS SUBJECT TO CHANGE WITHOUT NOTICE			FINISH		CARLING TECHNOLOGIES				
<p>PROPRIETARY NOTE:</p> <p>NOTICE TO ALL PERSONS RECEIVING THIS DRAWING. THIS DOCUMENT IS THE PROPERTY OF CARLING TECHNOLOGIES, INC. AND IS NOT TO BE DISCLOSED, REPRODUCED IN WHOLE OR IN PART OR USED FOR MANUFACTURING PURPOSES BY ANYONE WITHOUT THE CONSENT OF CARLING TECHNOLOGIES, INC.</p>	<u>UNSPECIFIED TOLERANCES</u>		TOOL NO.	REV	TITLE G SERIES DOUBLE POLE				
	FRAC. ±1/64 X.XXX ±.015 ANGLES ±1°		DR BY	DATE					
			D. PARKER	10-21-09					
			CHK BY	DATE	SIZE	DWG NO.		REV.	
			P. KOERNER	10-21-09	A	2GK50-D-1B-B-XHP1		—	
PROJECTIONS		DIMENSIONS IN [mm]	APPD BY	DATE	USED ON		SCALE:	SHT	OF
			D. PARKER	10-21-09			NONE	1	1