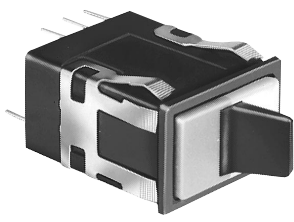


Manual Switches
Electronic Control Paddle

AML23 Series

INCANDESCENT OR NON-LIGHTED DISPLAY



Covers ordered separately.

FEATURES

- Silver or gold contacts.
- 1, 2 or 4 poles.
- Toggle type paddle operators permanently installed in rectangular housings.
- Covers for the switch housing may be lighted or unlighted.
- UL recognized, CSA certified.
- Lamps can be furnished installed or ordered separately.
- Lamp circuit independent of switch circuit.

Electrical Data page 19
Paddle Covers page 47
Lamps and LEDs page 58
Accessories page 57
Mounting Dimensions pages 59, 62

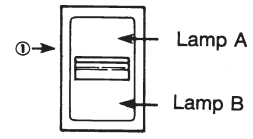


*AML23 Series: 1 pole and 2-pole only.

*AML23 ORDER GUIDE

Table with 6 columns: Housing Type, Operator/Bezel Color, Incandescent Lamp Type, Terminal Type, Circuitry Codes, and Operating Action. It details various configurations for the AML23 series switches.

* Lamps will be installed per each lamp circuit specified in the Housing Type.



The "MICRO SWITCH" identification is shown on this side of the switch housings.

Example: AML23EBA2AA01
Rectangular non-lighted paddle switch housing; black paddle and bezel; .110 x .020 terminals; with one circuit ON and one circuit OFF in each extreme operator position (maintained).

CIRCUITRY

Table showing circuit diagrams for Silver and Gold contacts in 2-Position and 3-Position configurations. It includes terminal numbers and switch symbols.

OPERATING ACTION

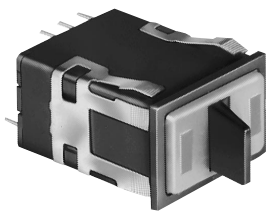
Table showing operating actions for 2-Position and 3-Position switches, including maintenance (Maint.) and momentary (Mom.) states for various codes.

Manual Switches

Electronic Control Paddle

AML25 Series

LED DISPLAY



Covers with LED "window" ordered separately.

FEATURES

- Identical to AML23, except furnished with one or two rectangular high efficiency LED's which give flush display area and wide angle indication.
- Available with or without diode protection for LED's.
- LED circuit independent of switch circuit.

Electrical Data	page 19
Paddle Covers	page 48
Lamps and LEDs	page 58
Accessories	page 57
Mounting Dimensions	pages 59, 62

- 5 thru 24 VDC devices have internal resistor to maintain current at nominal 20 mA.
- UL recognized, CSA certified.



*AML25 Series: 1 pole and 2-pole only.

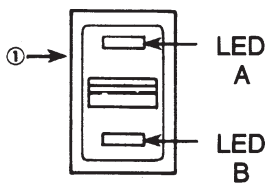
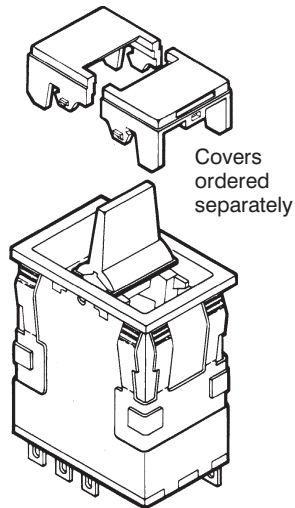
AML25 ORDER GUIDE

Housing Type	Operator/ Bezel Color	LED Voltage	Terminal Type/ Diode Protection	Circuitry Codes	Operating Code	LED Color (LED A)	LED Color (LED B)
AML25 F Rectangular 1 LED	B Black/Black	B V*	2 .110 × .020 (Solder or Q-C)	Insert code letters as shown in Circuitry Chart	Insert code numbers from Operating Action Chart	R Red	R Red
AML25 G Rectangular 2 LED's		C 5 V	3 .025 × .025 (Printed Ckt., or Push-On)	LED version available only with AA		Y Yellow	Y Yellow
		D 10 V	8 .110 × .020 w/Diode protection	BA		G Green	G Green
		E 15 V		CA		X No LED	X No LED
		F 24 V		DA circuitry			

*See LED application information for devices without current-limiting resistor, page 58.

Example: **AML25FBB2AA01RX**
Rectangular paddle switch; illuminated with one red LED, this device has a black paddle and bezel, and .110 × .020 terminals; with one circuit ON and one circuit OFF in each extreme operator position (maintained).

NOTE: For further information on replacement LED's, call the 800 number.



① The "MICRO SWITCH" identification is shown on this side of the switch housings.

Manuals