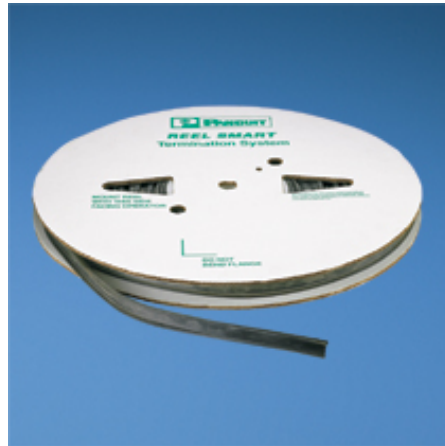


PCSS-B-CR

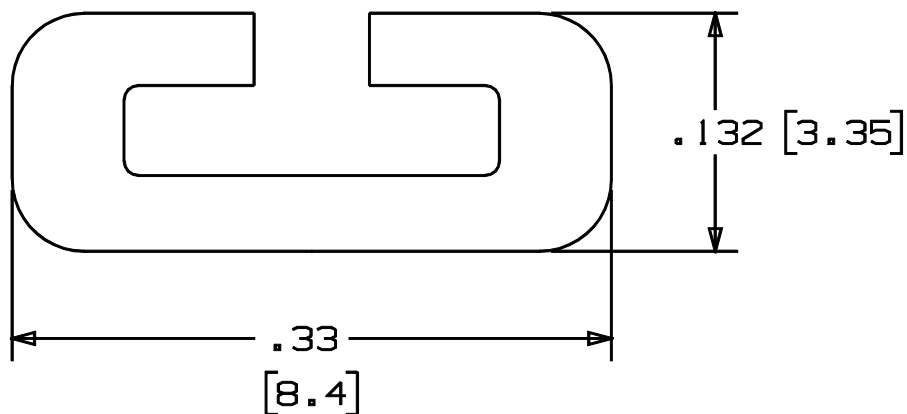


- Black neoprene sleeving slips on *Pan-Steel*™ Stainless Steel Ties and custom length banding and is used on applications requiring improved gripping on non-resilient objects, separation between dissimilar metals, and added bundle protection. Can be used indoors or outdoors (excellent ultraviolet resistance, good resistance to petroleum, and many chemicals). Provides full separation between the ties and the material to which you are fastening.
- Operating temperature range 41°F – 200°F (5°C – 93°C)
- Supplied in 100 ft (30.5m) reels
- "C" shaped channel design available in types PCSS–B–CR and PCSH–B–CR cushion sleeve
- "U" shaped channel design available in type PCSSH–B–CR cushion sleeve

■ Part Number	PCSS-B-CR
■ RoHS Compliancy Status	Compliant
■ Part Description	Cushion sleeving used with standard cross section ties or custom length banding system, "C" shaped channel design.
■ Color	black
■ Length (ft.)	100
■ Length (m)	30.5
■ Width (In.)	.33
■ Width (mm)	8.4
■ Pricing Description	Cushion Sleeving, Standard, 100ft (30.5m) x .33" (8.4mm) Wd
■ Min. Order UOM	RL
■ Min. Order Qty.	1
■ BOM Qty. (# of Pkgs.)	

NOTES:

1. MAT'L. - NEOPRENE
2. FLAMMABILITY RATING UL94V-0
3. COLOR - BLACK
4. MATERIAL TO BE SUPPLIED IN 100' LENGTHS
5. WGT./100' - 2.6 LBS.
6. DIM'S IN () ARE mm



S41016_02

										PANDUIT CORP. TINLEY PARK, ILLINOIS
										PROTECTIVE CUSHION STRIP (STANDARD) PCSS-B-CR
										UNLESS OTHERWISE SPECIFIED, DIMENSIONAL TOLERANCES ARE: (.X) ± .04 (XXX) ± .020 (.XX) ± .04 ANGLES ±
										UNLESS OTHERWISE SPECIFIED, ALL DIMENSIONS ARE GIVEN IN INCHES, THIRD ANGLE PROJECTION.
02	2/01	KMD		REDRAWN ON CAD						SCALE 10:1
01	9/96	JKD	JD	ADDED NOTE 6 ADDED mm TO DIMS.	05044		LA RLS	DRAWN BY MG	MAT'L:	DRAWING NO. S41016
R	3/84	MG	LA	RELEASED		JJW	LA	DATE 3/15/84	NOTED	DWG A
REV	DATE	BY	CHK	DESCRIPTION	ECN #	PM	CUST	CHK'D JAC		SIZE