

### Specifications

Insulation Resistance: 1000MΩ at 500V DC  
 Withstanding Voltage: 500Vrms  
 Current Rating: 0.5A  
 Operating Temp. Range: -20°C to +90°C  
 Reflow Solder Temp.: 235°C max for 3sec.  
 Mating Cycles: 10,000 times

### Materials and Finish

Insulator: LCP, glass filled (UL94V-0)  
 Push Button: Glass reinforced PBT (UL94V-0)  
 Cover: Stainless Steel  
 Contacts: Brass  
 Plating: Contacts - Gold (15μ") over Nickel (40μ")  
 Solder Tails - SnBb (100μ") over Nickel (40μ")

### Features

- Adapter for Compact Flash Card Type I
- With push button ejector (optional)

### Part Number (Details)

CF 050P - 003 - \* \* DS

Series

No. of Contacts

90° SMT

Ejector:

0 = Without

1 = Right Side

Insulator Colour:

0 = White (standard)

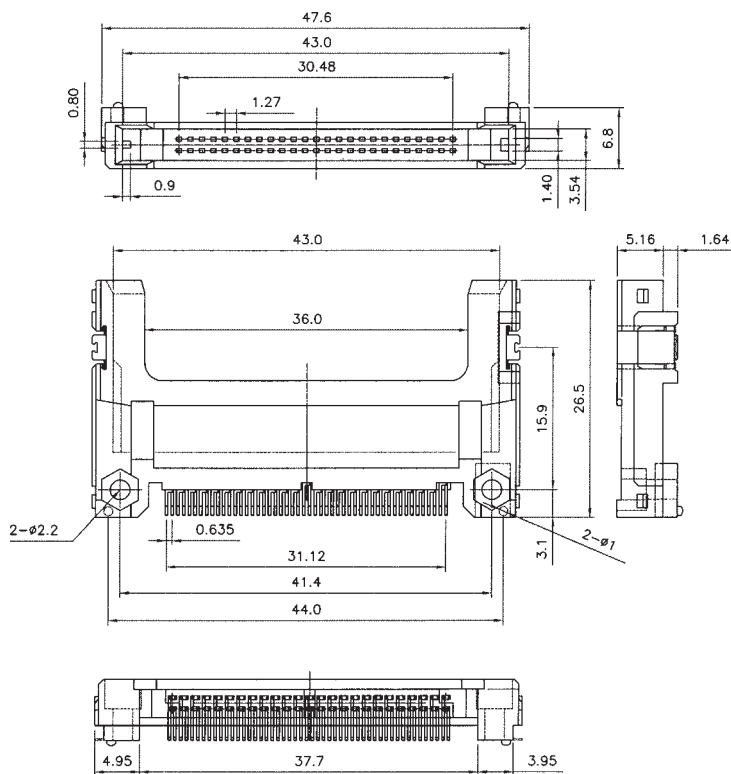
1 = Black (on request only)

Plating Area:

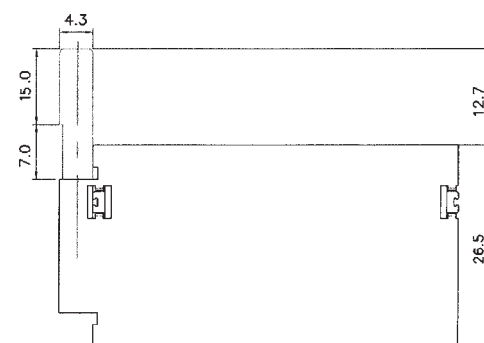
Contacts: Gold (15μ") over 40μ" Nickel

Solder Tails: 100μ" Tin over 40μ" Nickel

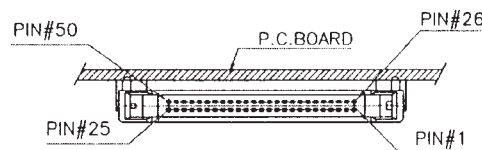
### Outline Dimensions (without Ejector)



### Outline Dimensions (Ejector Option)



### Pin Positions



### Recommended PCB Layout and Mounting Area

