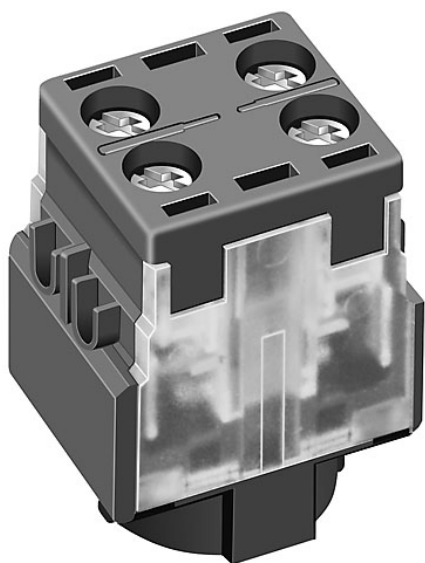


EAO – Your Expert Partner for Human Machine Interfaces

61-8615.11 - Switching element for pushbutton and keylock- and selector switch 2 positions

61-8615.11 - Switching element for pushbutton and keylock- and selector switch 2 positions



Attention: The preview is based on a sample product. This can differ from your current configuration.

Other Attributes

Weight	0.008 kg
Diode 1N4007	no value

Connection Method

Terminal	Screw
----------	-------

Switching element

Switching current	5 A
Switching system	Slow-make switching element
Contacts	1 NO
Contact material	Silver
Switching voltage	250 V AC/DC

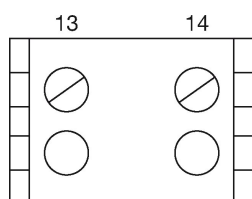
EAO – Your Expert Partner for Human Machine Interfaces

61-8615.11 - Switching element for pushbutton and keylock- and selector switch 2 positions

Wiring diagram



Component layout



Additional information

without lamp terminal

We offer a dismantling tool Part No. 61-9711.0 for dismantling of the switching element

Legend

Contacts: NO = Normally open