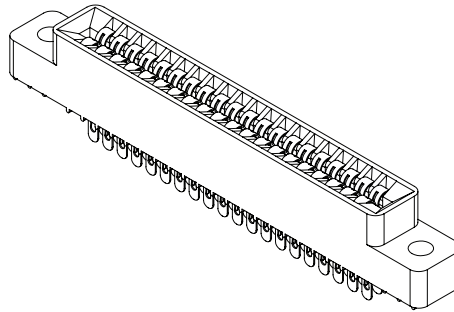




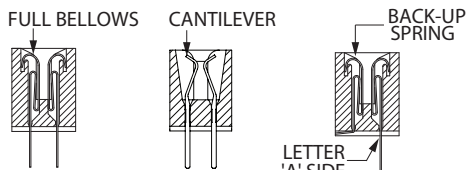
.100" [2.54 mm] Contact Centers, .431" [10.95 mm] Insulator Height, Dip Solder/Eyelet/Right Angle for .062" [1.57 mm] or .031" [0.79 mm] Mating PCB

SPECIFICATIONS

- Accommodates .062" ± .008" [1.57 mm ± 0.20 mm] or .031" ± .006" [0.79 mm ± 0.15 mm] mating PCB (for .093" [2.36 mm] PC board see following pages)
- PBT, PPS, PA9T or PEEK insulator
- Molded-in key available
- 3 Amps current rating for one contact energized
- 30 milli Ohms maximum at rated current
- UL Flammability Rating: 94V-0



READOUT

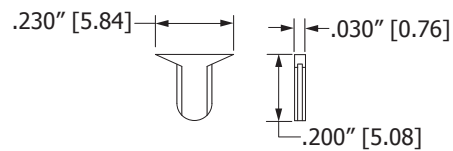


DUAL (D)

HALF LOADED (H)

POLARIZING KEYS (For .062" Mating PCB Only)

**PLA-K1
KEY IN BETWEEN CONTACTS
(ORDER SEPARATELY)**

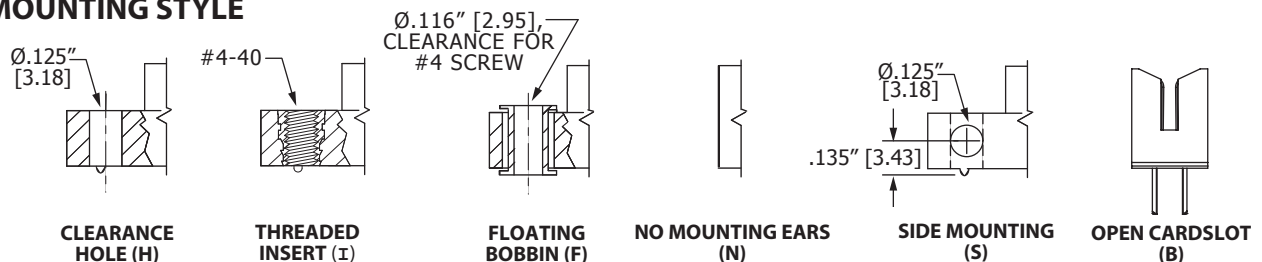


CONSULT FACTORY FOR MOLDED-IN KEY

TERMINATION TYPE

| FULL BELLOW | TAIL LENGTH | ROW SPACING | MIN HOLE SIZE | FULL BELLOW | |
|-------------|----------------------|--------------|---------------|----------------------------------------|----------------------------|
| | RIGHT ANGLE | | | STRAIGHT | EYELET ACCEPTS 3-#26 AWG |
| | .125" [3.18] (RA) | .156" [3.96] | Ø.043" [1.09] | | |
| | STRAIGHT | | | .007" [0.18] THICK (RE) | .014" [0.36] THICK (TE) |
| | .200" [5.08] (RT) | .140" [3.56] | Ø.043" [1.09] | CARD EXTENDER ACCEPTS .062" [1.57] PCB | |
| | .440" [11.19] (RY) | .140" [3.56] | Ø.043" [1.09] | TAIL LENGTH | MODIFICATION CODE |
| | .185" [4.70] (RX) | .200" [5.08] | Ø.043" [1.09] | .210" [5.33] EYELET (RE) | -S13 |
| | .165" [4.19] (RJ) | .250" [6.35] | Ø.043" [1.09] | .185" [4.70] (RT) | -S13 |
| | .425" [10.80] (RY) | | | .425" [10.80] (RY) | -S13 |
| | CRIMP TO CENTER (SX) | | | SURFACE MOUNT (RT) | |
| | .160" [4.06] | | Ø.043" [1.09] | | MODIFICATION CODE -S924 |
| | CANTILEVER | | | RIGHT ANGLE SURFACE MOUNT (RA) | |
| | TAIL LENGTH | ROW SPACING | MIN HOLE SIZE | MODIFICATION CODE | |
| | .200" [5.08] (ET) | .140" [3.56] | Ø.040" [1.02] | -S2106 | |
| | .440" [11.19] (EY) | .140" [3.56] | Ø.040" [1.02] | | |

MOUNTING STYLE



CLEARANCE HOLE (H)

THREADED INSERT (I)

FLOATING BOBBIN (F)

NO MOUNTING EARS (N)

SIDE MOUNTING (S)

OPEN CARDSLOT (B)



.100" [2.54 mm] Contact Centers, .431" [10.95 mm] Insulator Height, Dip Solder/Eyelet/Right Angle for .062" [1.57 mm] or .031" [0.79 mm] Mating PCB

Female Card Edge

PART NUMBER OPTIONS

MATERIALS (INSULATOR/CONTACT)

- E = PBT/Phosphor Bronze (Standard)
- R = PPS/Phosphor Bronze
- G = PA9T/Phosphor Bronze
- H = PBT/Beryllium Copper
- A = PPS/Beryllium Copper
- J = PA9T/Beryllium Copper
- *F = PPS/Spinodal (Overall Gold Plating Only)
Consult Factory for Special Soldering Guidelines
- *C = PPS/Beryllium Nickel (Overall Gold Plating Only)
- *W = PEEK/Beryllium Nickel (Overall Gold Plating Only)
- *Consult factory for availability.
- Refer to Page 7 for Operating/Processing Temperatures

CONTACT FINISH - RoHS Compliant

All platings are Lead Free and have .000050" Nickel underplate

| Contact Surface | Termination |
|------------------------------|--------------------------|
| B = .000010" Gold | .000100" Pure Tin, Matte |
| C = .000030" Gold | .000100" Pure Tin, Matte |
| G = .000010" Gold | .000005" Gold |
| Y = .000030" Gold | .000005" Gold |
| Contact Surface | Overall Plating |
| S = .000010" Gold | .000010" Gold |
| M = .000030" Gold | .000010" Gold |
| E = .000100" Pure Tin, Matte | .000100" Pure Tin, Matte |

CONTACT CENTERS

- C = .100" [2.54 mm]

E B C 43 D RE H - Sxxx

MODIFICATIONS (Consult Factory)

- OMIT FOR STANDARD
- S13 = Card Extender Accepts .062" [1.57 mm] PCB (RE, RT, RY Terminations Only)
- S734 = .031"±.006" [0.79 mm ± 0.15 mm] Mating PCB
- S924 = Surface Mount
- S2106 = Right Angle Surface Mount

MOUNTING STYLE (Opposite Page)

- H = .125" [3.18 mm] Clearance Holes
- N = No Mounting
- B = Open Card slot
- S = Side Mounting
- I = Threaded Insert
- F = Floating Bobbin

TERMINATION TYPE (Opposite Page)

- RA = Right Angle
- RE = Eyelet (Standard)
- TE = Eyelet (Overall Plated Only)
- **ET, RT = .140" [3.56 mm] X .200" [5.08 mm] Dip Solder
- **EY, RY = .140" [3.56 mm] X .440" [11.19 mm] Dip Solder
- RX = .200" [5.08 mm] X .185" [4.70 mm] Dip Solder
- RJ = .250" [6.35 mm] X .165" [4.19 mm] Dip Solder
- SX = .110" [2.79 mm] Centered Dip Solder

READOUT (Opposite Page)

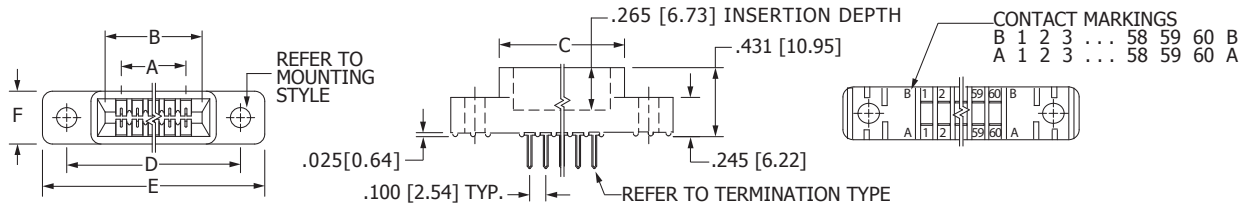
- D = Dual
- H = Half Loaded

NUMBER OF CONTACT POSITIONS

See Chart Below

**'ET' & 'EY' Only available in 'B' & 'C' Plating code

DIMENSIONS Dimensions in [] are in millimeters, all others are in inches.



Tolerances on non-critical dimensions may vary slightly due to shrinkage differential per insulator material; Consult factory.

| POSITIONS/ CONTACTS | INCHES | | | | | | MILLIMETERS | | | | | |
|------------------------|--------|--------|--------|--------|--------|---------------|-------------|--------|--------|--------|--------|--------------|
| | A±.008 | B±.008 | C±.015 | D±.010 | E±.020 | F+.005/- .015 | A±0.20 | B±0.20 | C±0.38 | D±0.25 | E±0.51 | F+0.13/-0.38 |
| 04/08* | 0.300 | 0.500 | 0.675 | 0.975 | 1.275 | | 7.62 | 12.70 | 17.15 | 24.77 | 32.39 | |
| 05/10 | 0.400 | 0.600 | 0.775 | 1.075 | 1.375 | | 10.16 | 15.24 | 19.69 | 27.31 | 34.93 | |
| 06/12 | 0.500 | 0.700 | 0.875 | 1.175 | 1.475 | | 12.70 | 17.78 | 22.23 | 29.85 | 37.47 | |
| 07/14 | 0.600 | 0.800 | 0.975 | 1.275 | 1.575 | | 15.24 | 20.32 | 24.77 | 32.39 | 40.01 | |
| 08/16 | 0.700 | 0.900 | 1.075 | 1.375 | 1.675 | | 17.78 | 22.86 | 27.31 | 34.93 | 42.55 | |
| 10/20 | 0.900 | 1.100 | 1.275 | 1.575 | 1.875 | | 22.86 | 27.94 | 32.39 | 40.01 | 47.63 | |
| 12/24 | 1.100 | 1.300 | 1.475 | 1.775 | 2.075 | | 27.94 | 33.02 | 37.47 | 45.09 | 52.71 | |
| 13/26 | 1.200 | 1.400 | 1.575 | 1.875 | 2.175 | | 30.48 | 35.56 | 40.01 | 47.63 | 55.25 | |
| 15/30 | 1.400 | 1.600 | 1.775 | 2.075 | 2.375 | | 35.56 | 40.64 | 45.09 | 52.71 | 60.33 | |
| 17/34 | 1.600 | 1.800 | 1.975 | 2.275 | 2.575 | | 40.64 | 45.72 | 50.17 | 57.79 | 65.41 | |
| 18/36 | 1.700 | 1.900 | 2.075 | 2.375 | 2.675 | 0.330 | 43.18 | 48.26 | 52.71 | 60.33 | 67.95 | 8.38 |
| 19/38 | 1.800 | 2.000 | 2.175 | 2.475 | 2.775 | | 45.72 | 50.80 | 55.25 | 62.87 | 70.49 | |
| 20/40 | 1.900 | 2.100 | 2.275 | 2.575 | 2.875 | | 48.26 | 53.34 | 57.79 | 65.41 | 73.03 | |
| 22/44 | 2.100 | 2.300 | 2.475 | 2.775 | 3.075 | | 53.34 | 58.42 | 62.87 | 70.49 | 78.11 | |
| 23/46* | 2.200 | 2.400 | 2.575 | 2.875 | 3.175 | | 55.88 | 60.96 | 65.41 | 73.03 | 80.65 | |
| 25/50 | 2.400 | 2.600 | 2.775 | 3.075 | 3.375 | | 60.96 | 66.04 | 70.49 | 78.11 | 85.73 | |
| 26/52 | 2.500 | 2.700 | 2.875 | 3.175 | 3.475 | | 63.50 | 68.58 | 73.03 | 80.65 | 88.27 | |
| 28/56 | 2.700 | 2.900 | 3.075 | 3.375 | 3.675 | | 68.58 | 73.66 | 78.11 | 85.73 | 93.35 | |
| 30/60 | 2.900 | 3.100 | 3.275 | 3.575 | 3.875 | | 73.66 | 78.74 | 83.19 | 90.81 | 98.43 | |
| 31/62 | 3.000 | 3.200 | 3.375 | 3.675 | 3.975 | | 76.20 | 81.28 | 85.73 | 93.35 | 100.97 | |
| 35/70 | 3.400 | 3.600 | 3.775 | 4.075 | 4.375 | | 86.36 | 91.44 | 95.89 | 103.51 | 111.13 | |
| 36/72 | 3.500 | 3.700 | 3.875 | 4.175 | 4.475 | | 88.90 | 93.98 | 98.43 | 106.05 | 113.67 | |
| 40/80 | 3.900 | 4.100 | 4.275 | 4.575 | 4.875 | | 99.06 | 104.14 | 108.59 | 116.21 | 123.83 | |
| 43/86 | 4.200 | 4.400 | 4.575 | 4.875 | 5.175 | | 106.68 | 111.76 | 116.21 | 123.83 | 131.45 | |
| 44/88 | 4.300 | 4.500 | 4.675 | 4.975 | 5.275 | | 109.22 | 114.30 | 118.75 | 126.37 | 133.99 | |
| 49/98 | 4.800 | 5.000 | 5.175 | 5.475 | 5.775 | 0.400 | 121.92 | 127.00 | 131.45 | 139.07 | 146.69 | 10.16 |
| 50/100 | 4.900 | 5.100 | 5.275 | 5.575 | 5.875 | | 124.46 | 129.54 | 133.99 | 141.61 | 149.23 | |
| 52/104* | 5.100 | 5.300 | 5.475 | 5.775 | 6.075 | | 129.54 | 134.62 | 139.07 | 146.69 | 154.31 | |
| 60/120 | 5.900 | 6.100 | 6.275 | 6.575 | 6.875 | | 149.86 | 154.94 | 159.39 | 167.01 | 174.63 | |
| 65/130 | 6.400 | 6.600 | 6.775 | 7.075 | 7.375 | | 162.56 | 167.64 | 172.09 | 179.71 | 187.33 | |

* Consult factory for availability.