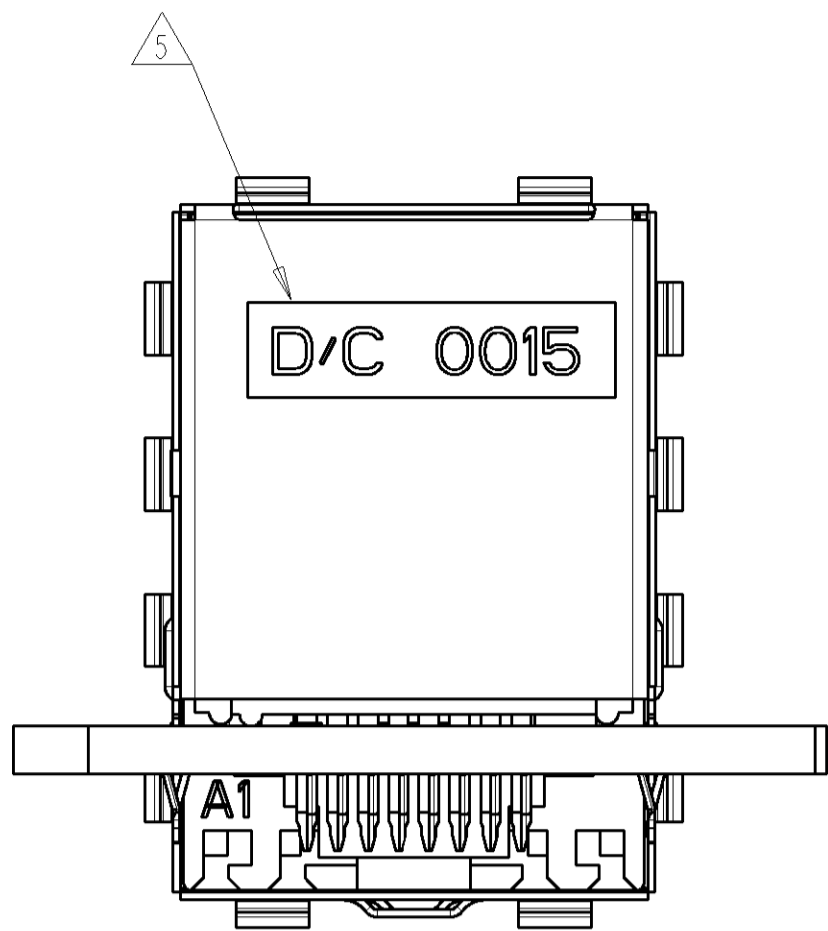
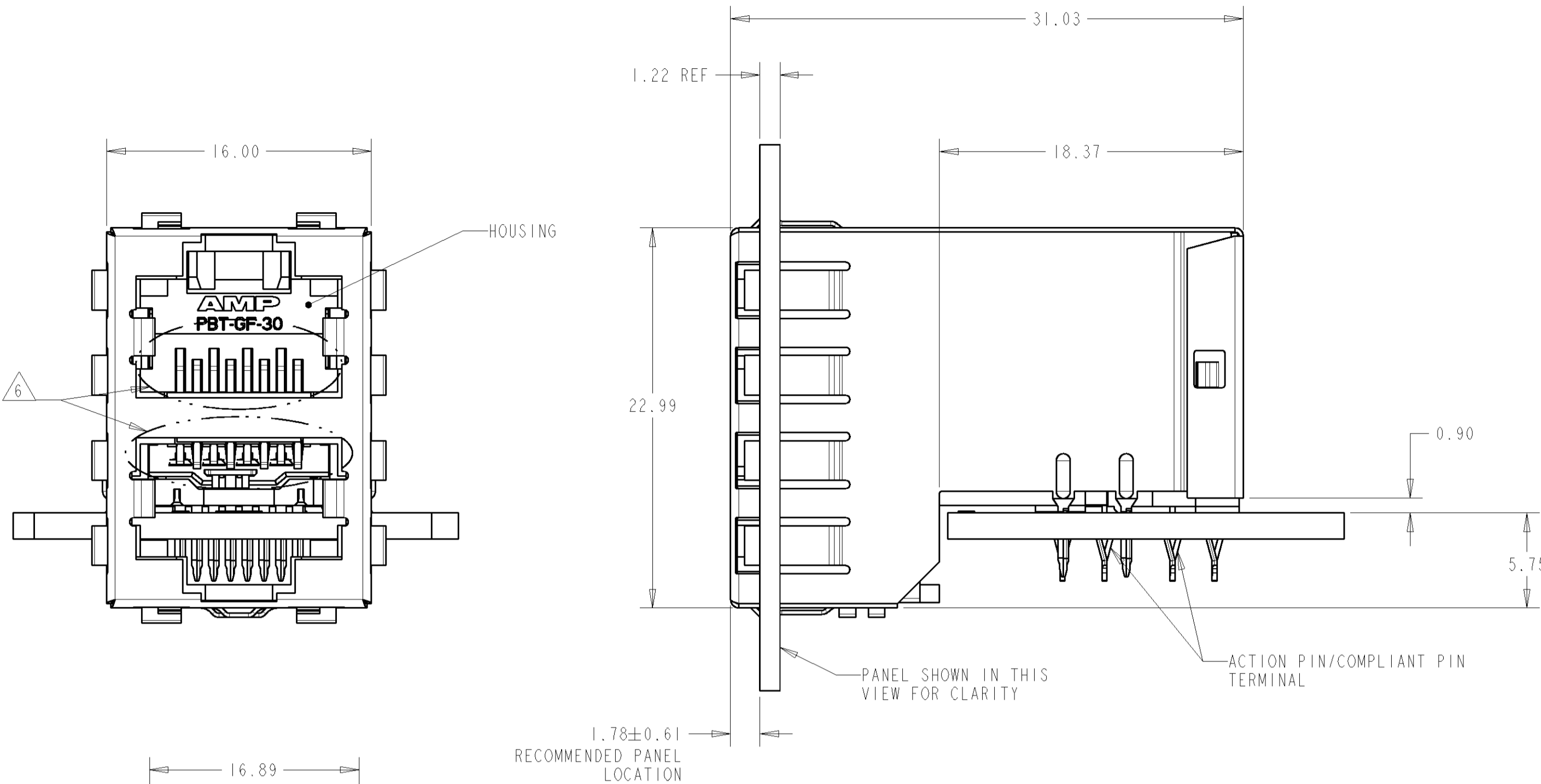
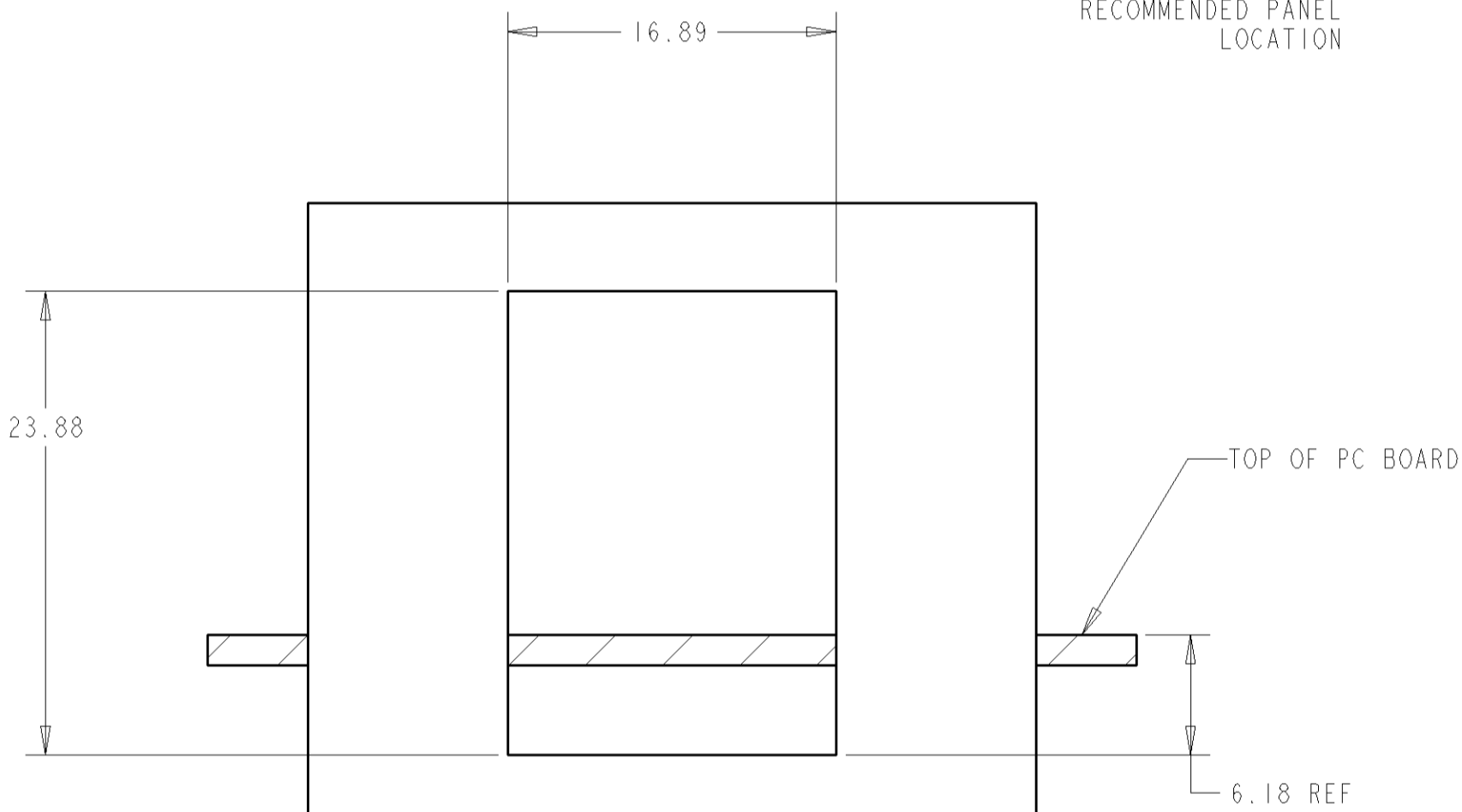


LOC		DIST		REVISIONS			
P	LTR	DESCRIPTION		DATE	DWN	APVD	
E		ECO-07-015104		28JUN2007	LAM	JW	

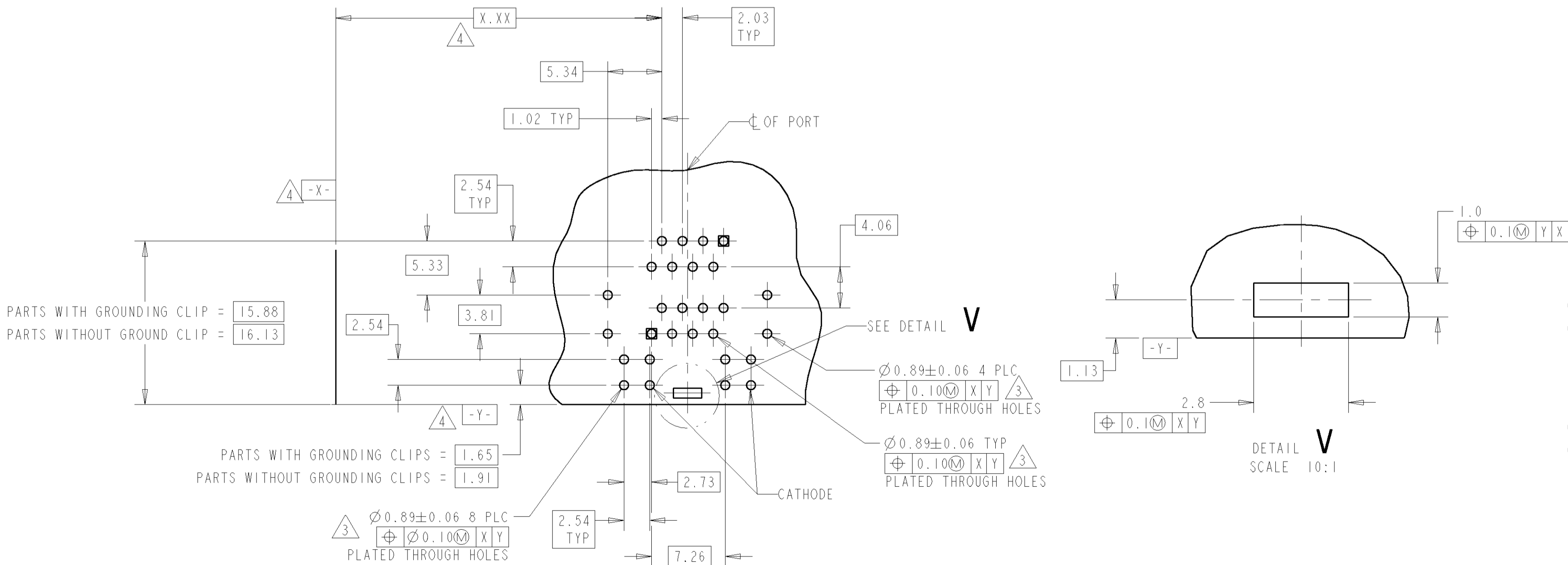


- MATERIAL:  
HOUSING - PBT POLYESTER, BLACK, UL 94V-0  
  
TERMINALS - 0.33 THICK PHOS BRONZE PLATED WITH 1.27µm MINIMUM THICK HARD GOLD IN LOCALIZED AREA AND 3.81µm MINIMUM THICK TIN-LEAD IN ACTION PIN COMPLIANT PIN TERMINAL AREA OVER 1.27µm MINIMUM THICK NICKEL UNDERPLATE  
  
SHIELD - 0.25 THICK COPPER ALLOY PLATED WITH 2.03µm MINIMUM BRIGHT TIN OVER 1.27µm MIN NICKEL  
  
GROUNDING CLIP - 2.03 µm MIN MATTE TIN OVER NICKEL  
  
LED - DIFFUSED EPOXY LENS, 12.95 CARBON STEEL WIREFRAME LEADS PREPLATED WITH 8.89µm TIN/COPPER OVER 2.03µm THICK SILVER OVER 1.02µm THICK COPPER OVER 3.56µm THICK NICKEL OVER 1.02µm THICK COPPER  
  
ACTION PIN - COMPLIANT PIN CONTACTS 0.3 THICK BRASS PLATED WITH 2-4µm BRIGHT TIN.  
  
2. JACK CAVITY CONFORMS TO FCC RULES AND REGULATIONS, PART 68 SUBPART F.  
  
3. DRILLED HOLE DIA = 1.020±0.025  
COPPER THICKNESS = 0.025±0.075  
TIN-LEAD THICKNESS = .008  
  
4. DATUMS AND BASIC DIMENSIONS ESTABLISHED BY CUSTOMER  
  
5. DATE CODE LOCATED ON REAR OF PART APPROXIMATELY AS SHOWN  
  
6. CONTACTS ARE NOT INTENDED TO BE ALIGNED WITH EACH OTHER

## 1368168-1 SHOWN SHEET 1

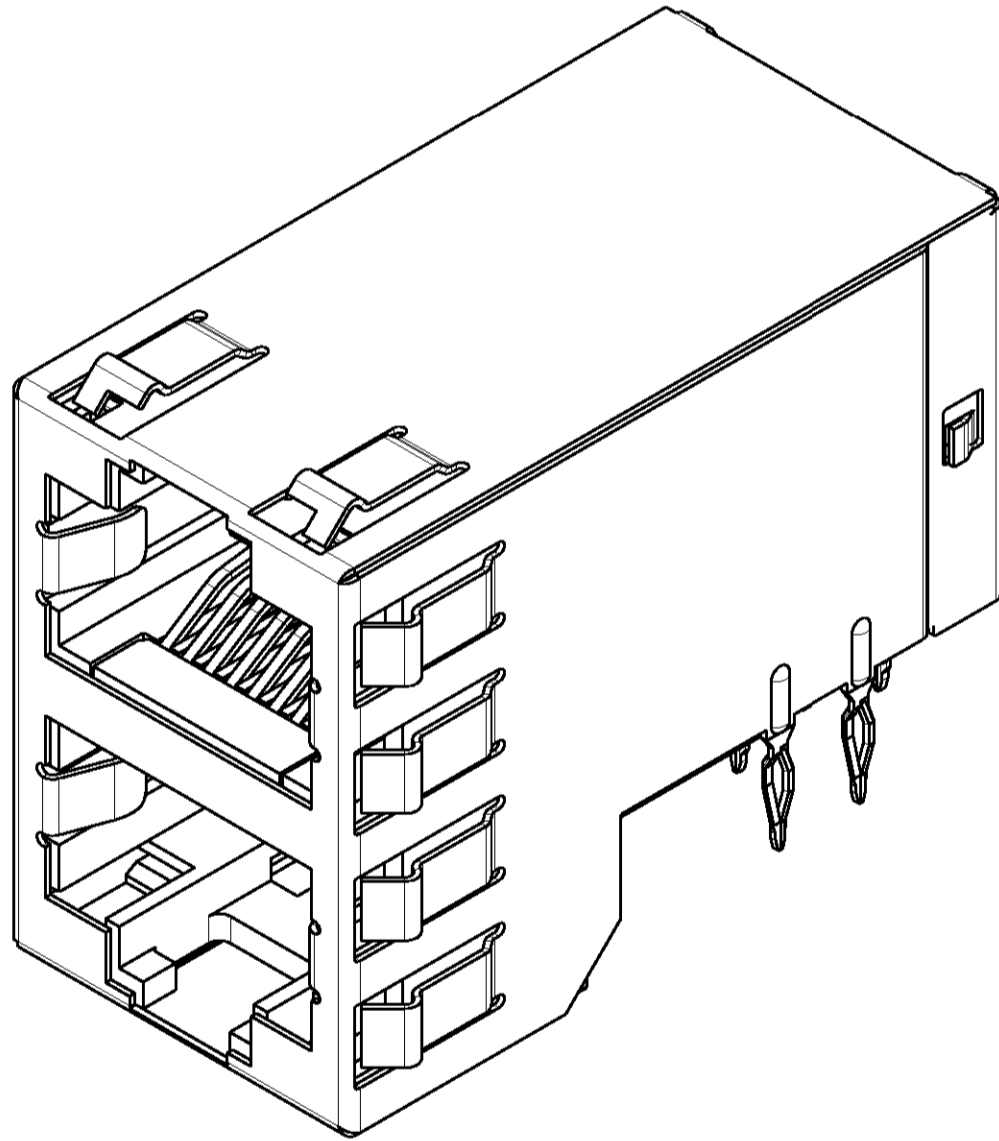
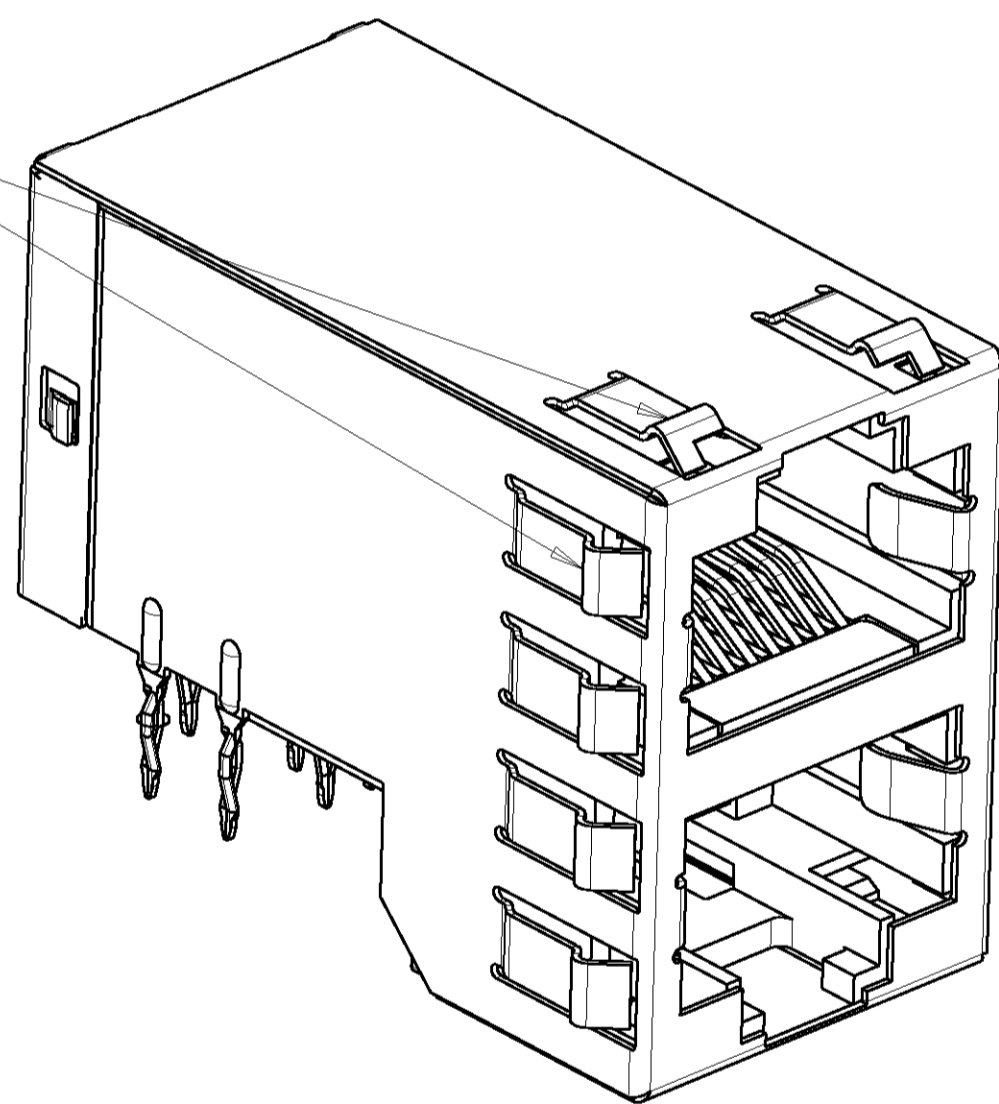


RECOMMENDED PANEL CUT-OUT



PC BOARD LAYOUT (COMPONENT SIDE)

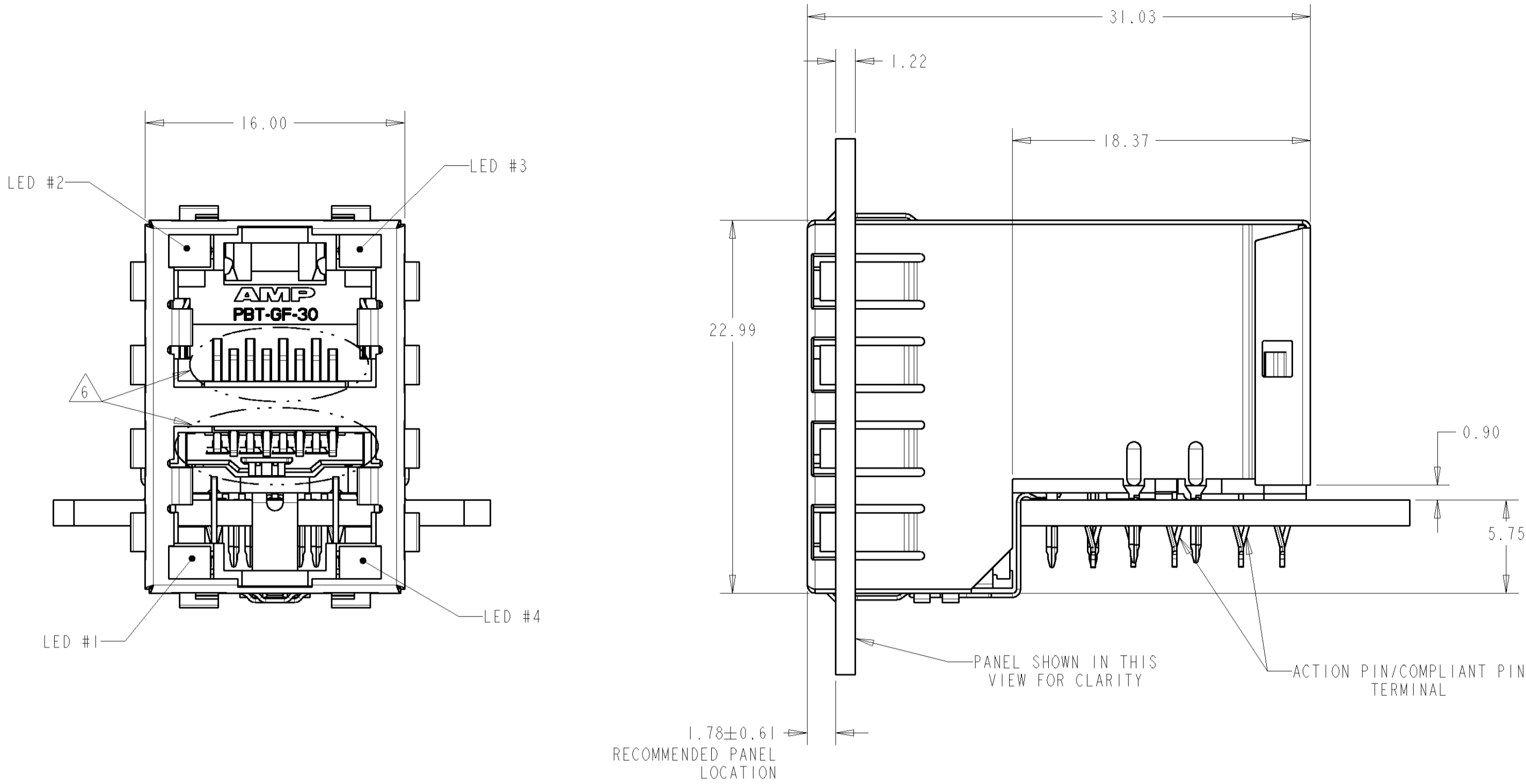
SHIELD WITH NO LED CUTOUTS AND STANDARD PANEL GROUNDS



OBsolete	YELLOW	YELLOW	GREEN	GREEN	YES	MODIFIED PANEL GROUNDS	WITH LED PORTS	1-1368168-0
OBsolete	GREEN	GREEN	YELLOW	YELLOW	YES	MODIFIED PANEL GROUNDS	WITH LED PORTS	1368168-9
OBsolete	GREEN	GREEN	GREEN	GREEN	YES	MODIFIED PANEL GROUNDS	WITH LED PORTS	1368168-8
	YELLOW	YELLOW	GREEN	GREEN	YES	STANDARD PANEL GROUNDS	WITH LED PORTS	1368168-7
	GREEN	GREEN	YELLOW	YELLOW	YES	STANDARD PANEL GROUNDS	WITH LED PORTS	1368168-6
	GREEN	GREEN	GREEN	GREEN	YES	STANDARD PANEL GROUNDS	WITH LED PORTS	1368168-5
OBsolete	N/A	N/A	N/A	N/A	YES	MODIFIED PANEL GROUNDS	WITH LED PORTS	1368168-4
OBsolete	N/A	N/A	N/A	N/A	NO	MODIFIED PANEL GROUNDS	WITH LED PORTS	1368168-3
	N/A	N/A	N/A	N/A	YES	STANDARD PANEL GROUNDS	WITHOUT LED PORTS	1368168-2
	N/A	N/A	N/A	N/A	NO	STANDARD PANEL GROUNDS	WITHOUT LED PORTS	1368168-1
	LED #4	LED #3	LED #2	LED #1	GROUNDING CLIP	GROUNDING CLIPS	SHIELD STYLE	PART NUMBER

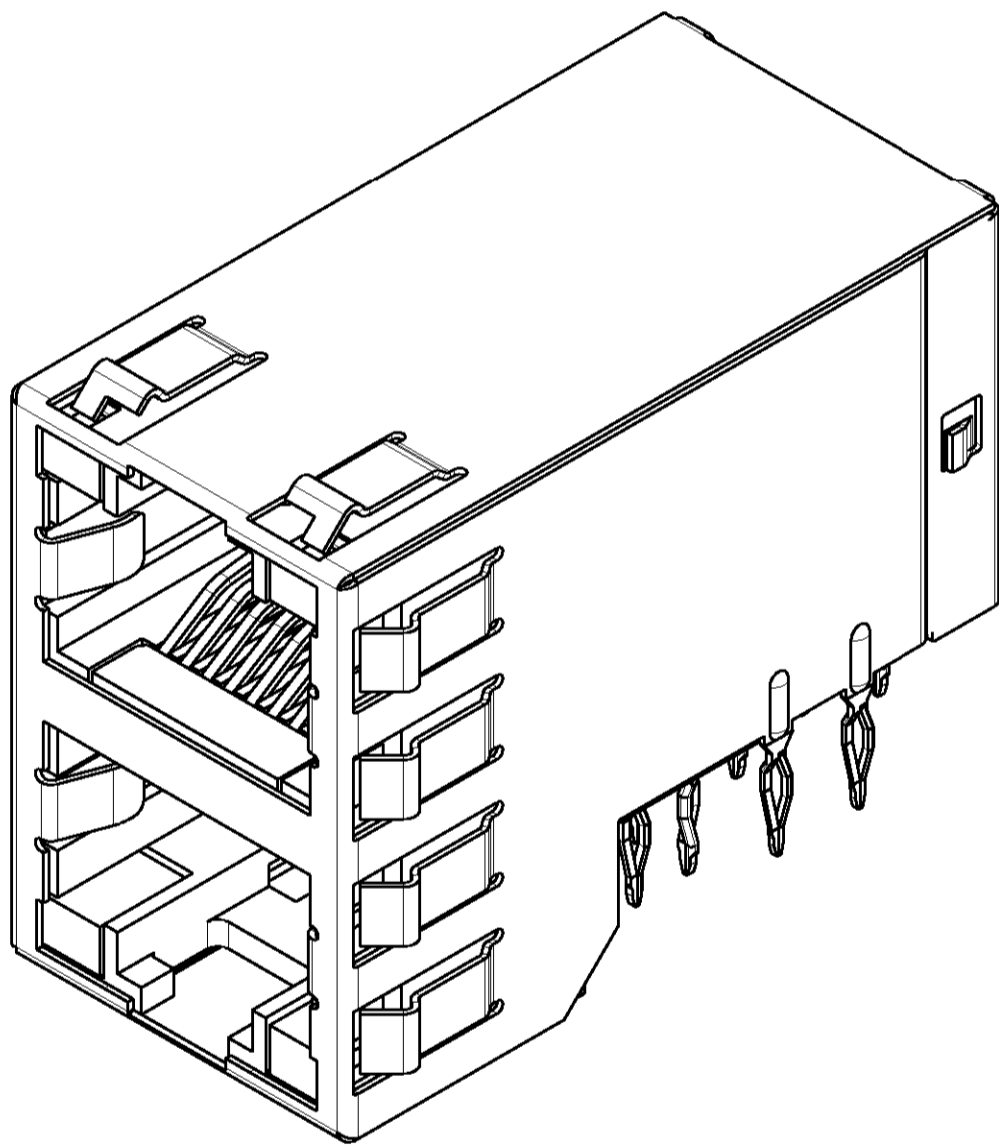
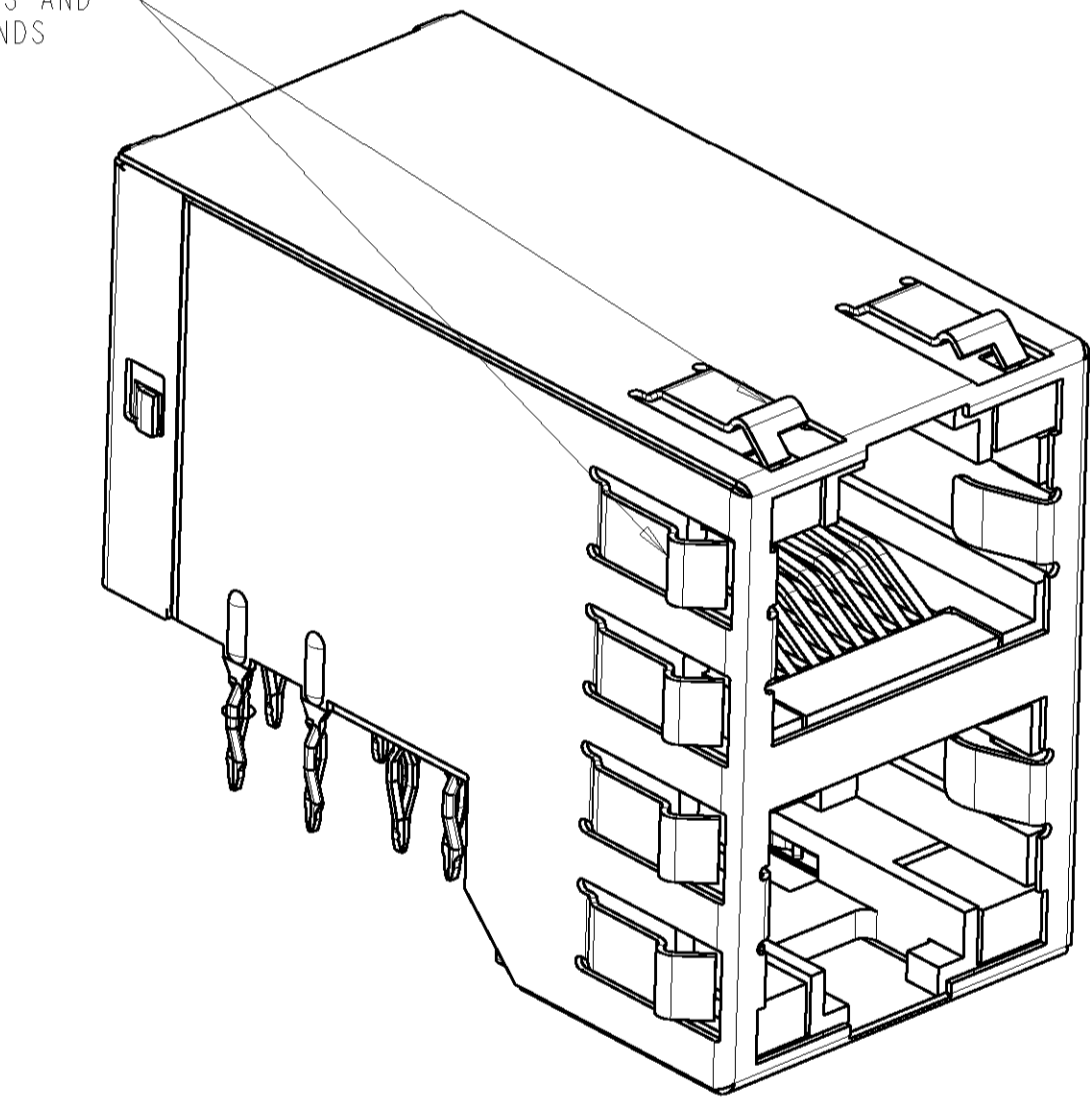
TYCO ELECTRONICS CORPORATION TYCO ELECTRONICS CORPORATION TYCO ELECTRONICS CORPORATION		DRAWN A. MAYER 260CT04	TYCO Electronics Harrisburg, PA 17105-3608	
DIMENSIONS: mm		CHK B. KUHNLY 260CT04	NAME S. FLICKINGER	
TOLERANCES UNLESS OTHERWISE SPECIFIED: 9 PLC ± 1 PLC ± 3 PLC ±0.1 4 PLC ±0.13 ANGLES ±		PRODUCT SPEC 108-1854	STACKED MODULAR JACK ASSEMBLY, 2X1, 8 POSITION, SHIELDED PANEL GROUND, OFFSET, CAT 5	
MATERIAL SEE NOTE 1		APPLICATION SPEC 114-2160	SIZE A1 00779	RESTRICTED TO REV E
FINISH SEE NOTE 1		WEIGHT	SCALE 3:1	SHEET 1 OF 2
CUSTOMER DRAWING		DATE 28JUN2007	REV E	

LOC		DIST		REVISIONS				
AA	00	P	LTR	DESCRIPTION	DATE	DWN	APVD	
		-	SEE SHEET 1	-	-	-		



1368168-6 SHOWN  
SHEET 2

SHIELD WITH LED CUTOUTS AND  
STANDARD PANEL GROUNDS



DIMENSIONS:		TOLERANCES UNLESS OTHERWISE SPECIFIED:		DWN		TYCO Electronics	
mm		0 PLC ±		L.A.MAYER 260CT04		Harrisburg, PA 17105-3608	
		1 PLC ±		B.KUHNLY 260CT04			
		2 PLC ±0.1		S.FLICKINGER 260CT04			
		3 PLC ±0.13		PRODUCT SPEC			
		4 PLC ±		108-1854			
		ANGLES ±		APPLICATION SPEC			
		FINISH		114-2160			
MATERIAL		SEE NOTE 1		WEIGHT			
SEE NOTE 1				CUSTOMER DRAWING			
				SCALE		3:1	
				SHEET		2 OF 2	
				REV		E	