

# MODULAR PC TERMINAL BLOCKS

## PC TERMINAL BLOCKS

### MODULAR INTERLOCKS



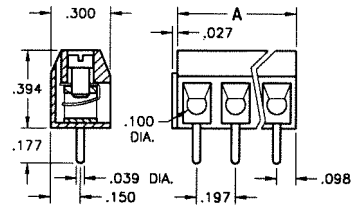
#### Horizontal Wire Entry

- Low Profile
- Mounts easily in pre-drilled or stamped holes
- Wire guard helps prevent damage to conductors

5mm SPACING		
CAT. NO.	POSITIONS	A DIM.
8718	2	.394
8719	3	.591

#### MATERIAL

Contact: Brass, Tin Plate  
Housing: Blue PBT, UL Rated 94V-0  
Screw: Steel, Zinc Plate & Clear Chromate (captivated)



Recommended Mtg. Hole Size: .047

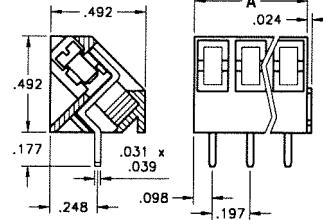
### SPECIFICATIONS

#### ELECTRICAL

Current Rating: 16 Amps  
Dielectric Strength: 2500V  
Insulation Breakdown: 1500VAC/min.  
Rated Voltage: 250V

#### MECHANICAL

Operating Temp: 22°F to 248°F (-30°C to 120°C)  
Peak Temp: +393°F (+200°C)  
Wire Size: Accepts #22-14 AWG



Recommended Mtg. Hole Size: .051

### MODULAR INTERLOCKS



#### 45° Wire Entry

- Easy access to termination points on densely packaged PC boards
- Screw heads are on top of unit to facilitate access
- Wire guard helps prevent damage to conductors

5mm SPACING		
CAT. NO.	POSITIONS	A DIM.
8720	2	.394
8721	3	.591

- Modular Interlocks allow expansion up to 24 positions

## PLUGGABLE WITH PIN STRIPS

### MODULAR INTERLOCKS



#### SPECIFICATIONS

##### MATERIAL

Contact: Brass, Tin Plate  
Header Pins: Brass, Tin Plate  
Housing: Blue PBT, UL Rated 94V-0  
Screw: Steel, Zinc Plated & Clear Chromate (captivated)

##### ELECTRICAL

Dielectric Strength: 2500V  
Insulation Breakdown: 1500V AC/min.  
Rated voltage: 250V

##### MECHANICAL

Operating Temp: 22°F to 248°F (-30°C to 120°C)  
Peak Temp: +393°F (+200°C)

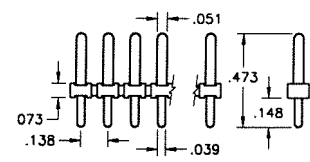
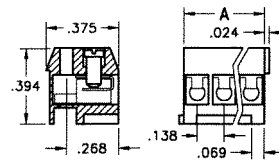
These unique modular terminal blocks are convenient and easy to use. They may be interlocked to achieve a maximum of 24 positions. The header pins, for both the 6 and 10 Amp models are supplied in strips of 24. Simply snap off the desired number of positions required and insert into PC board. The modular terminal block can be plugged into the header strip at anytime.

- Space saving low profile design
- Easy access horizontal wire entry
- Convenient screw head access on top of terminal block
- Headers mount easily in pre-drilled or stamped holes
- Wire guards help prevent damage to conductors
- Accepts #22-16 AWG wire

#### Pin Header Strips (24 pins per strip)

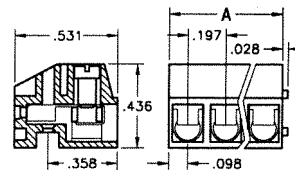
Recommended Mtg. Hole Size: .047

3.5mm SPACING			
CAT. NO.	POSITIONS	A	CURRENT RATING
8722	2	.276	6 Amps
8723	3	.413	

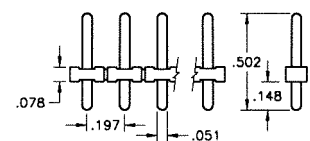


CAT. NO. 8724

5mm SPACING			
CAT. NO.	POSITIONS	A	CURRENT RATING
8725	2	.394	10 Amps
8726	3	.591	



Recommended Mtg. Hole Size: .059



CAT. NO. 8727

## SCREWLESS - PUSH BUTTON TYPE

#### SPECIFICATIONS

##### MATERIAL

Terminal: Brass, Tin Plate  
Contact: Stainless Steel  
Housing: Blue Nylon 6/6, UL Rated 94V-0

##### ELECTRICAL

Current Rating: 10 Amps  
Dielectric Strength: 2500V  
Insulation Breakdown: 1500VAC/min.

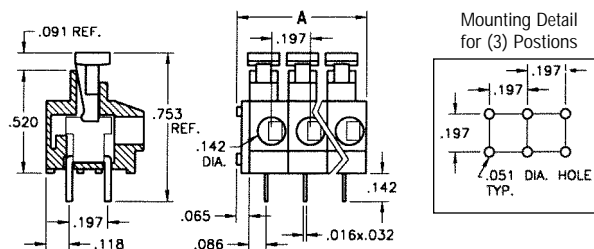
##### MECHANICAL

Operating Temp: 22°F to 248°F (-30°C to 120°C)  
Peak Temp: +392°F (+200°C)

5mm SPACING		
CAT. NO.	POSITIONS	A DIM.
8728	2	.459
8729	3	.656

Particularly useful when quick reliable connections are required or when temporary connections are needed, such as on test sets and bread boards. They may be interlocked to achieve a maximum of 24 positions.

- Available with two or three terminal positions
- Mounts easily in predrilled or stamped holes
- Suited for both solid and stranded wire
- Accepts #20-18 AWG wire\*
- Stainless Steel spring assures good contact
- Quick reliable connection



\*Recommended wire strip length: .300

### MODULAR INTERLOCKS



#### Horizontal wire entry

