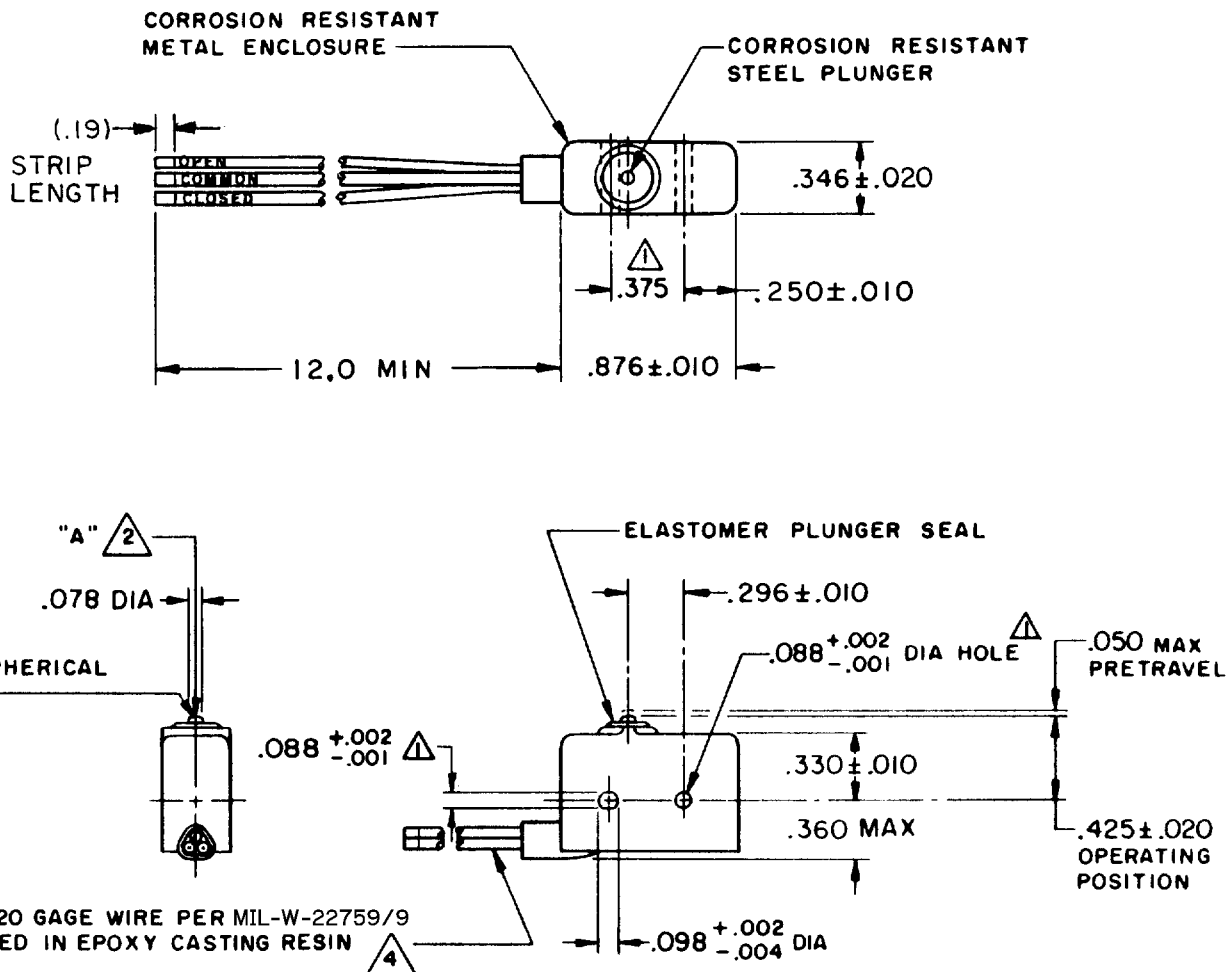


**MICRO SWITCH**FREEPORT, ILLINOIS, U.S.A.
A DIVISION OF HONEYWELL

FED. MFG. CODE 91929

SWITCH-BASIC

CATALOG LISTING

5SE218**NOTE -**

- ① MOUNTING HOLES WILL ACCEPT PINS OR SCREWS OF .087 MAX DIA ON .375 ± .002 CENTERS
- ② ACTUATION IN LINE WITH ARROW "A" IS RECOMMENDED
- ③ WEIGHT OF SWITCH ONLY IS .26 OZ MAX. WEIGHT OF SWITCH WITH LEADS IS .64 OZ MAX
- ④ WIRE LEADS MARKED WITH CIRCUIT IDENTIFICATION AND WIRE GAGE (CLOSED-20, OPEN-20 AND COMMON-20) PER MIL-W-5088
5 - FOR USE IN TEMPERATURE RANGE -15°F TO +185°F

THIS DRAWING COVERS A PROPRIETARY ITEM AND IS THE PROPERTY OF MICRO SWITCH, A DIVISION OF HONEYWELL. THIS DRAWING IS NOT TO BE COPIED OR USED WITHOUT THE APPROVAL OF MICRO SWITCH.

CHARACTERISTICS

OPERATING FORCE — — — — 5-17 OZ

RELEASE FORCE — — — — 4 OZ MIN

RELEASE TRAVEL — — — — .004 MIN

DIFFERENTIAL TRAVEL — — — .004 MAX

OVERTRAVEL — — — — .003 MIN

ELECTRICAL DATA**CONTACT ARRANGEMENT
S P D T**250 VAC — — — — — 5 AMP
30 VOLTS DC RATING

| | | | | | |
|----------------|---|-----------|---|-----|-----|
| INDUCTIVE | — | SEA LEVEL | — | 3 | AMP |
| | | 50,000 FT | — | 2.5 | AMP |
| RESISTIVE | — | SEA LEVEL | — | 5 | AMP |
| | | 50,000 FT | — | 5 | AMP |
| MAXIMUM INRUSH | — | | | 24 | AMP |

SCALE FULL

DO NOT SCALE PRINT

UNLESS OTHERWISE
NOTED

DIMENSIONS ARE IN INCHES

TOLERANCES ARE:

| | | |
|-------------|--------|--------|
| ONE PLACE | (.0) | ± .030 |
| TWO PLACE | (.00) | ± .015 |
| THREE PLACE | (.000) | ± .005 |
| ANGLES | | ± |

WEIGHT

3

CATALOG LISTING
5SE218**M**ISSUE
7

PAGE 1 OF 1

REPLACES

SR 11927

RELEASE NO.

CHECK

REVISIONS

A

CO-34213

JAL

25 SEPT 74

B

CO52067

CJH

21 SEP 82

C

CO57041A

CJH

21 MAR 85

D

CO77706

JAK

4 MAY 94

E

CO-94402

JJA

5 MAR 99

F

200355

CSL

3 MAY 00

LSD

CHECK

27 JULY 65

27 JULY 65

27 JULY 65

27 JULY 65

27 JULY 65

27 JULY 65

27 JULY 65

27 JULY 65

27 JULY 65

27 JULY 65

27 JULY 65

FORMTEK

DRAWN

M B F

27 JULY 65

Mouser Electronics

Authorized Distributor

Click to View Pricing, Inventory, Delivery & Lifecycle Information:

[Honeywell:](#)

[5SE218](#)