

## Compensated High Current Choke, 1-phase



## Approvals and Compliances

### Description

- Current compensated choke
- 1-phase choke
- Flexible wire
- Flange for mounting onto printed circuit board
- Fully potted resign

### Applications

- Placed in front of frequency converter
- Stepper motor drives
- UPS-systems
- Inverter

### Weblinks

[pdf datasheet](#), [html-datasheet](#), [General Product Information](#), [Distributor-Stock-Check](#), [Detailed request for product](#)

### Technical Data

Rated voltage	up to 540 VAC up to 760 VDC
Rated Current	10 - 50 A @ Ta 40 °C
Rated inductance	1.1 - 12 mH, Tol. -30% +50%
Power Operating Frequency	50 - 400 Hz
Terminal Type	Flexible wire
Weight	145 - 1865 g
Material: Housing	UL 94V-0
Sealing Compound	UL 94V-0

Test Voltage	2.5 kV, 50 Hz, 2 sec, winding to winding
Isolation Voltage	2.5 kV, 50 Hz, 2 sec, winding to ambient
Climatic Category	25/100/21 acc. to IEC 60068-1
Allowable Operation Temp.	-25 °C to 100 °C


## Approvals and Compliances

Detailed information on product approvals, code requirements, usage instructions and detailed test conditions can be looked up in [Details about Approvals](#)

### Approvals


The approval mark is used by the testing authorities to certify compliance with the safety requirements placed on electronic products.

Approval Reference Type: DKIP

Approval Logo	Certificates	Certification Body	Description
	<a href="#">UL Approvals</a>	UL	UL File Number:





### Application standards

Application standards where the product can be used

Organization	Design	Standard	Description
	Designed for applications acc.	IEC/UL 60950	IEC 60950-1 includes the basic requirements for the safety of information technology equipment.

Compliances

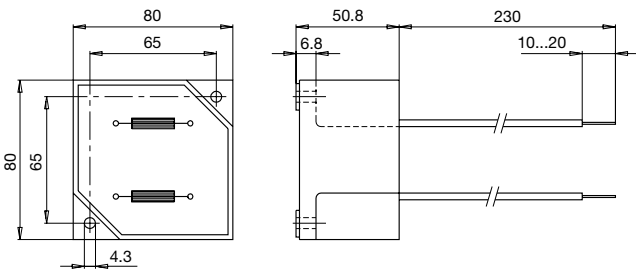
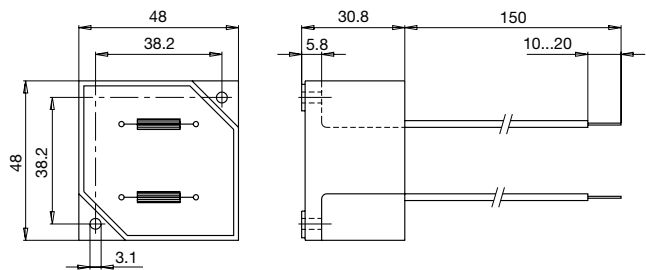
The product complies with following Guide Lines

Identification	Details	Initiator	Description
	<a href="#">CE declaration of conformity</a>	SCHURTER AG	The CE marking declares that the product complies with the applicable requirements laid down in the harmonisation of Community legislation on its affixing in accordance with EU Regulation 765/2008.
	<a href="#">RoHS</a>	SCHURTER AG	EU Directive RoHS 2011/65/EU
	<a href="#">China RoHS</a>	SCHURTER AG	The law SJ / T 11363-2006 (China RoHS) has been in force since 1 March 2007. It is similar to the EU directive RoHS.
	<a href="#">REACH</a>	SCHURTER AG	On 1 June 2007, Regulation (EC) No 1907/2006 on the Registration, Evaluation, Authorization and Restriction of Chemicals 1 (abbreviated as "REACH") entered into force.

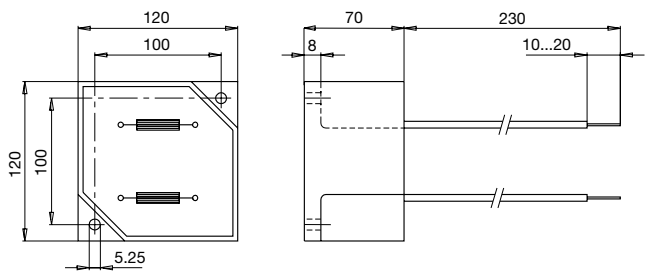
Dimension [mm]

Case 29-2W

Case 31-2W

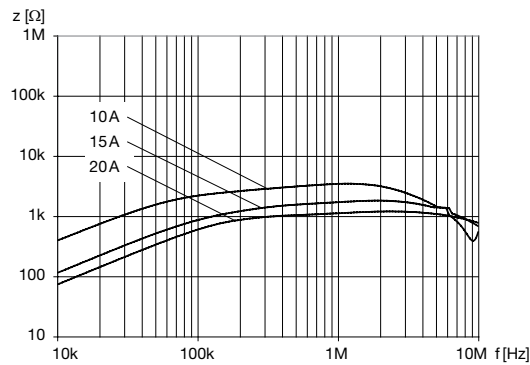


Case 33-2W

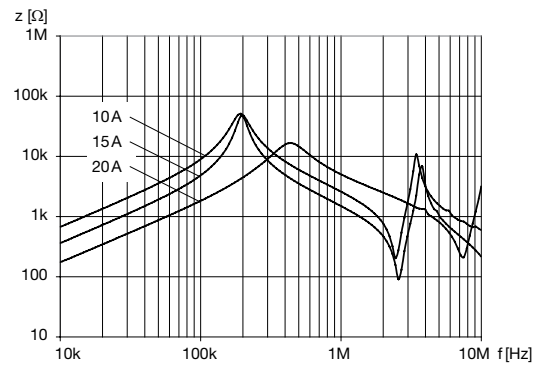


## Impedance curves

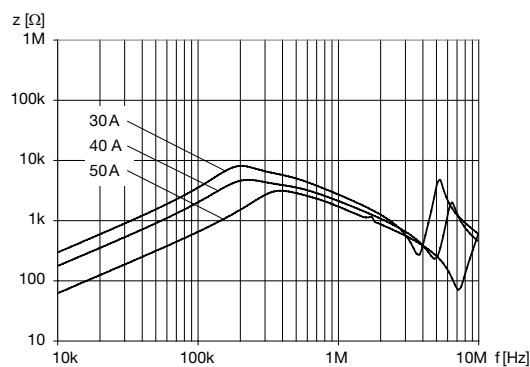
DKIP\_0229\_xxxx



DKIP\_0231\_xxxx



DKIP\_0233\_xxxx



## All Variants

$I_n$ [A]	$L_n$ [mH]	$R_{cu}$ [m $\Omega$ ]	Power <sub>loss</sub> [W]	$f_{RES}$ [MHz]	Copper $\phi$ [mm]	Weight [g]	Housings	Packing unit [pcs.]	Order Number
10	5	18	3.6	0.35	1.25	145 g	29-2W	12	DKIP-0229-1005
15	2	8	3.6	0.6	1.6	145 g	29-2W	12	DKIP-0229-1502
20	1.1	6	4.8	2.5	1.8	145 g	29-2W	12	DKIP-0229-2001
10	12	40	8	0.15	1.25	477 g	31-2W	2	DKIP-0231-1012
15	5	17	7.6	0.33	1.6	525 g	31-2W	2	DKIP-0231-1505
20	3	10	8	0.55	1.8	506 g	31-2W	2	DKIP-0231-2003
30	5	12.5	22.5	0.26	2.24	1600 g	33-2W	1	DKIP-0233-3005
40	3	6	19.2	0.3	1.5 x 4.5	1830 g	33-2W	1	DKIP-0233-4003
50	2	5	25	0.25	1.5 x 4.5	1865 g	33-2W	1	DKIP-0233-5002

Most Popular.

Availability for all products can be searched real-time: <https://www.schurter.com/en/Stock-Check/Stock-Check-SCHURTER>