

### SPECIFICATIONS

**Material:** HEXSEALS: Silicone rubber conforms to A-A-59588 Class III, GR 60 (unless otherwise specified)

**Mounting Nut:** HEXSEALS: Brass, nickel-plated

**Temperature Range:** HEXSEALS: -94°F to +400°F

**Pressure Range:** Exceeds 15 psi internal and 1500 psi external.  
(N5032B: 10 psi)

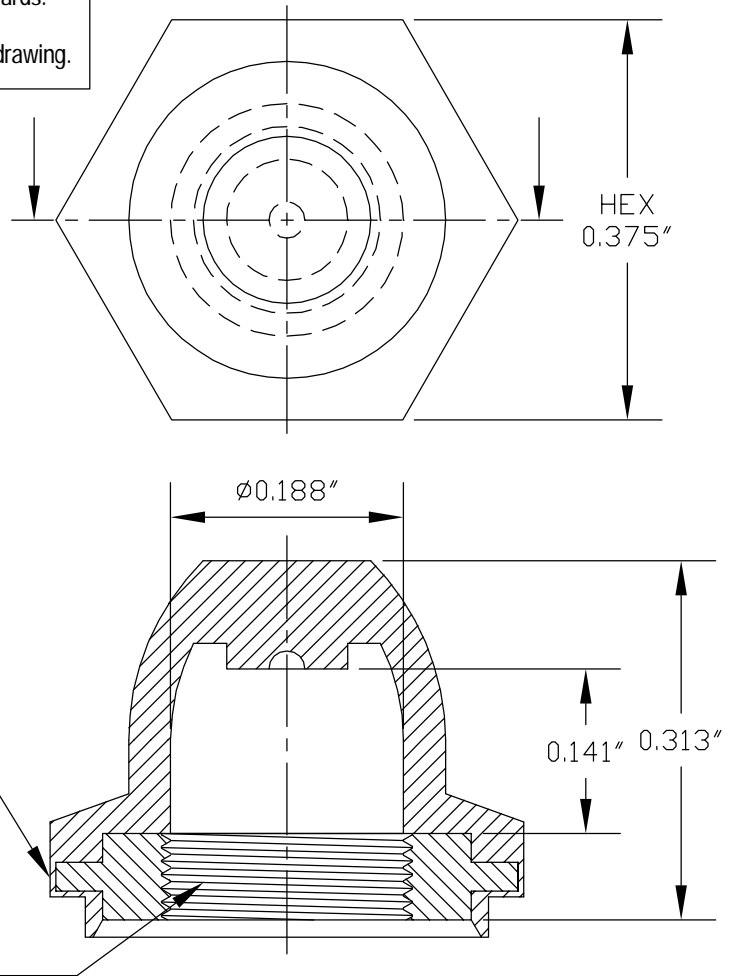
**Operational Life:** 50,000 actuations (minimum).

**Shelf Life:** Excess of 25 years.

**Resistant to:** Salt spray, sunlight, ozone, weather, fungus, and most acids and lubricating oils

**Agency Recognition:** E-SEELS and HEXSEALS are UL-listed to UL Std. 50 types 1-13, and meet CSA standards.

**Installation:** If a reducing adaptor is required - see page 14 of HEXSEAL catalog HEX200 for part numbers and drawing.



J	MAT'L CHANGED and REDRAWN FOR ACCURACY				S. GOK	06.26.09	
I	CAD COMPUTER GENERATED					09.23.02	
H	UPDATED, ADDED ORDER NUMBERS, DWG. NO. WAS 1231/SERIES				W. P.	11.24.76	
G	UPDATED				R. C.	08.04.74	
F	REDRAWN				TONY C.	12.11.69	
REV.	DESCRIPTION					DATE	
MAXIMUM AND MINIMUM MEASUREMENTS ARE STATED DIRECTLY ON EACH DIMENSION.		TITLE:	BOOT, PUSH BUTTON SWITCH (N-5040)		ENG.	M. MORSE	01.21.60
					DWN.	S. ANDREWS	01.21.60
					CHKD.	B. GLICKSMAN	01.21.60
MAT'L: SILICONE RUBBER PER A-A-59588 CLIII GR60		APM-HEXSEAL CORPORATION	SCALE 6 : 1	DWG. NO.	(N-5040) HEXSEAL®		
FINISH: GRAY							

THIS DRAWING COVERS PROPRIETARY ITEM AND IS THE PROPERTY OF THE APM-HEXSEAL CORPORATION.  
THIS DRAWING IS NOT TO BE COPIED OR USED WITHOUT THE WRITTEN APPROVAL OF AN OFFICER OF THE APM-HEXSEAL CORPORATION.

# Mouser Electronics

Authorized Distributor

Click to View Pricing, Inventory, Delivery & Lifecycle Information:

[APM HEXSEAL:](#)

[N5040](#) [N5040G](#)