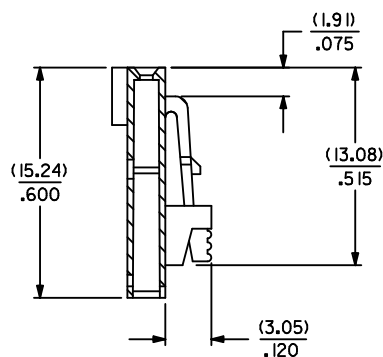
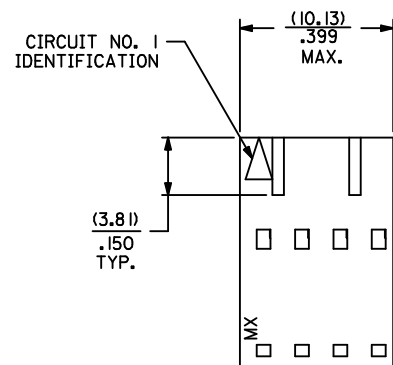
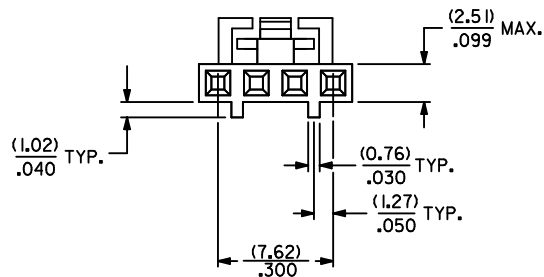
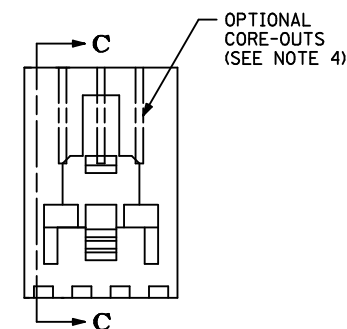


OPTION "G"



SECTION C-C



NOTES:

1. MATERIAL GLASS FILLED POLYESTER, UL94V-0, COLOR: BLACK.
2. HOUSING MAY BE USED WITH TERMINAL NUMBERS 70058, 71851, AND 70021.
3. REFER TO CHART FOR AVAILABLE CIRCUIT SIZES.
4. REFER TO MOLEX PRODUCT SPECIFICATION(S): PS-70400, PS-70058, PS-71851, PS-70021, AND MOLEX APPLICATION SPECIFICATION SDES-70400.
5. PARTS MAY OR MAY NOT BE SUPPLIED WITH EXTERIOR CORE-OUT CONFIGURATION. REFER TO MOLEX DRAWING NUMBER SD-70066-**** FOR OPTIONAL HOUSING DETAILS.
6. PACKAGE PER PK-70066-100.

COLOR	EDP. NO.	ENG. NO.
GREEN	50-57-8504	70066-0403
NATURAL (WHITE)	50-57-8604	70066-0404

ADD PS-70400 EC NO: UCP2012-1540 DRWN:DMORGAN 2011/11/14 CHKD:MIBARRA 2011/11/14 APPR:SMILLER 2012/02/13	DESCRIPTION	QUALITY SYMBOLS	GENERAL TOLERANCES (UNLESS SPECIFIED)			DIMENSION STYLE MM/IN		SCALE 4:1	DESIGN UNITS INCH	THIRD ANGLE PROJECTION		
				mm	INCH	DRAWN BY DMORGAN	DATE 2011/11/14	TITLE SL "G" OPTION 4CKT COLORED (2.54/.100) GRID STACKABLE HOUSING				
			4 PLACES	± ---	± ---	CHECKED BY MJS	DATE 1998/03/03					
			3 PLACES	± ---	± .010	APPROVED BY SMILLER	DATE 2012/02/13					
			2 PLACES	± 0.25	± .015	MATERIAL NO. SEE CHART		DOCUMENT NO. SD-70066-0403-0404		SHEET NO. 1 OF 1		
			1 PLACE	± 0.38	± ---							
REV			ANGULAR ±1/2°									
			DRAFT WHERE APPLICABLE MUST REMAIN WITHIN DIMENSIONS			SIZE C		THIS DRAWING CONTAINS INFORMATION THAT IS PROPRIETARY TO MOLEX INCORPORATED AND SHOULD NOT BE USED WITHOUT WRITTEN PERMISSION				