



2002-08-14

PRODUKTINFORMATION

Vi reserverar oss mot fel samt förbehåller oss rätten till ändringar utan föregående meddelande

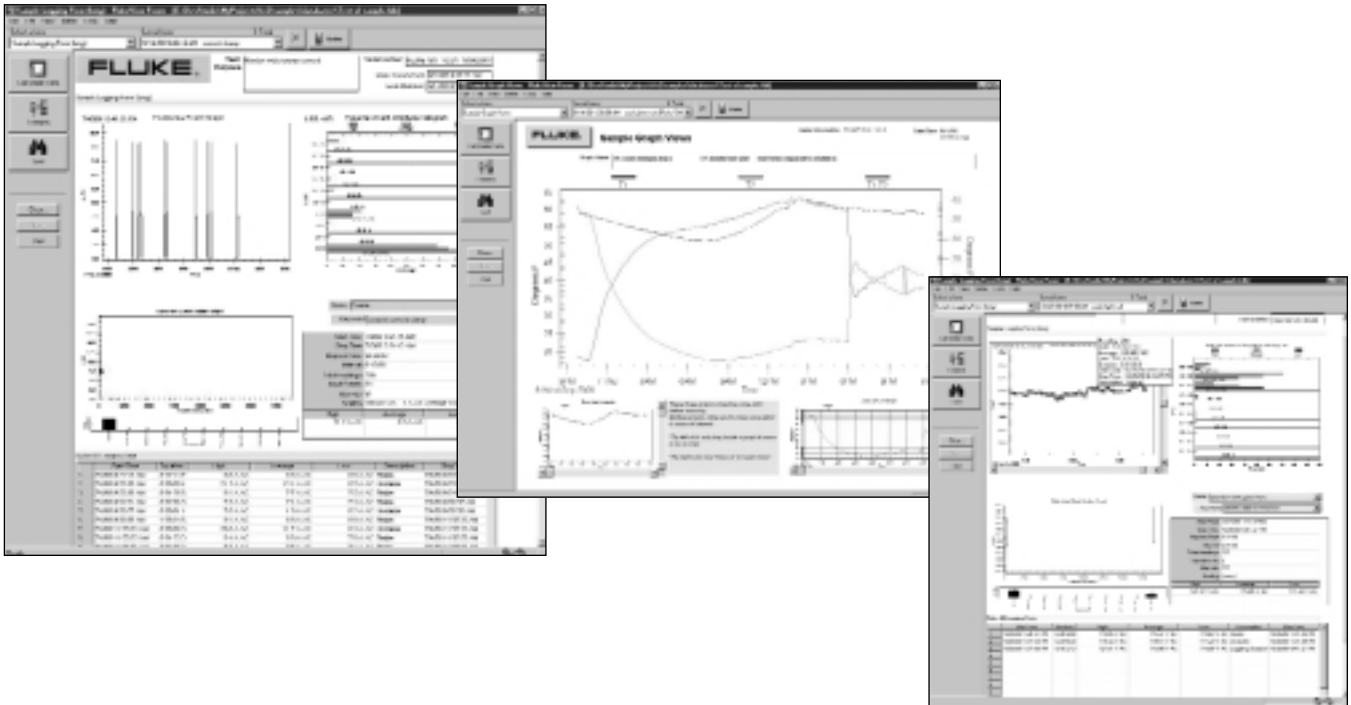
ELFA artikelnr

76-090-76 Mjukavarupaket FVF-SC1

76-090-84 Mjukavarupaket FVF-SC2

FlukeView® Forms Software

Fast and Easy Documentation and Analysis



FlukeView® Forms Documenting Software is the easy way to document, store and analyze measurements from your Fluke meters. Use it with:

- Fluke 180 Series Digital Multimeters (Model FVF-SC2)
- Fluke 87-IV & 89-IV Digital Multimeters (Model FVF-SC1)
- Fluke 53-II & 54-II Thermometers (Model FVF-SC1)

Now you can get the professional looking documents you need and data analysis that is much more in-depth than from a meter alone. FlukeView Forms records, charts and graphs data to help you perform in-depth analysis. And it's so easy to use. FlukeView Forms comes with both standard and customizable forms. You can use them immediately or customize the format to fit your specific applications. Once your form is standardized, it can be easily used by less trained staff. If you pre-

fer another brand of measurement analysis software, FlukeView Forms can easily port your data to the program of your choice.

FlukeView Forms can be used to display readings, data-log or download measurements on your computer "real-time" when measurements are made while the meter is connected to the computer. But the software can also be used to download, document and analyze measurements later on your computer, after the readings are first stored into the meter's (logging) memory in "stand-alone" operation.

FlukeView Forms communicates with supported meters via an infrared (Ir) serial interface cable, that makes data transfer fast and easy. FlukeView Forms is meter aware so there aren't any configuration problems. Using the supplied IR serial cable, the software will automatically recognize your meter and transfer the data.

Maximize the power of your meter with FlukeView Forms Documenting Software. FlukeView Forms software and documentation is localized to English, Spanish, French, German and Italian.

Operating System Requirements:

- Windows 95 or later, Windows NT 4.0 or later, or Windows 2000

Minimum Recommended PC Hardware:

- Pentium class microprocessor
- 23 MB RAM
- 70 MB hard disk space
(100 MB to install)

Ordering Information

- FVF-SC2: FlukeView Forms Software with cable for Fluke 180 Series
- FVF-SC1: FlukeView Forms Software with cable for Fluke 50 Series II thermometers and 80 Series IV digital multimeters
- FVF-UG: FlukeView Forms Software Upgrade (no cable) — upgrade from previous versions of FlukeView Forms

Fluke. *Keeping your world up and running.*

Fluke Corporation

P.O. Box 9090

Fluke Europe B.V.

P.O. Box 1186
5602 BD Eindhoven
The Netherlands

For more information call:

In the U.S.A. (800) 443-5853 or Fax (425) 456-5116

In Europe/M-East/Africa +31 (0)40 2 675 200

or Fax +31 (0)40 2 675 222

In Canada (905) 890-7600 or Fax (905) 890-6866

From other countries +1 (425) 456-5500

or Fax +1 (425) 456-5116

Visit us on the world wide web at:

<http://www.fluke.com>

Fluke (UK) Ltd

Industrial Sales
The Metro Centre
Dwight Road, Watford
WD1 8HG
United Kingdom

Tel. : +44 20 794 20 700

Fax : +44 20 794 20 701

E-mail: Industrial@uk.fluke.nl

Web : www.fluke.co.uk

Visit us on the world wide web at:

<http://www.fluke.co.uk>

© Copyright 2001 Fluke Corporation.

All rights reserved.

Printed in the Netherlands 04/01.

Data subject to alteration without notice.

Pub_ID: 10367-eng

Rev. 01