



# **MCP1630 Dual Buck Demo Board User's Guide**

---

**Note the following details of the code protection feature on Microchip devices:**

- Microchip products meet the specification contained in their particular Microchip Data Sheet.
- Microchip believes that its family of products is one of the most secure families of its kind on the market today, when used in the intended manner and under normal conditions.
- There are dishonest and possibly illegal methods used to breach the code protection feature. All of these methods, to our knowledge, require using the Microchip products in a manner outside the operating specifications contained in Microchip's Data Sheets. Most likely, the person doing so is engaged in theft of intellectual property.
- Microchip is willing to work with the customer who is concerned about the integrity of their code.
- Neither Microchip nor any other semiconductor manufacturer can guarantee the security of their code. Code protection does not mean that we are guaranteeing the product as "unbreakable."

Code protection is constantly evolving. We at Microchip are committed to continuously improving the code protection features of our products. Attempts to break Microchip's code protection feature may be a violation of the Digital Millennium Copyright Act. If such acts allow unauthorized access to your software or other copyrighted work, you may have a right to sue for relief under that Act.

---

Information contained in this publication regarding device applications and the like is provided only for your convenience and may be superseded by updates. It is your responsibility to ensure that your application meets with your specifications. MICROCHIP MAKES NO REPRESENTATIONS OR WARRANTIES OF ANY KIND WHETHER EXPRESS OR IMPLIED, WRITTEN OR ORAL, STATUTORY OR OTHERWISE, RELATED TO THE INFORMATION, INCLUDING BUT NOT LIMITED TO ITS CONDITION, QUALITY, PERFORMANCE, MERCHANTABILITY OR FITNESS FOR PURPOSE. Microchip disclaims all liability arising from this information and its use. Use of Microchip's products as critical components in life support systems is not authorized except with express written approval by Microchip. No licenses are conveyed, implicitly or otherwise, under any Microchip intellectual property rights.

#### **Trademarks**

The Microchip name and logo, the Microchip logo, Accuron, dsPIC, KEELOQ, microID, MPLAB, PIC, PICmicro, PICSTART, PRO MATE, PowerSmart, rPIC, and SmartShunt are registered trademarks of Microchip Technology Incorporated in the U.S.A. and other countries.


AmpLab, FilterLab, Migratable Memory, MXDEV, MXLAB, PICMASTER, SEEVAL, SmartSensor and The Embedded Control Solutions Company are registered trademarks of Microchip Technology Incorporated in the U.S.A.

Analog-for-the-Digital Age, Application Maestro, dsPICDEM, dsPICDEM.net, dsPICworks, ECAN, ECONOMONITOR, FanSense, FlexROM, fuzzyLAB, In-Circuit Serial Programming, ICSP, ICEPIC, MPASM, MPLIB, MPLINK, MPSIM, PICKit, PICDEM, PICDEM.net, PICLAB, PICtail, PowerCal, PowerInfo, PowerMate, PowerTool, rLAB, rPICDEM, Select Mode, Smart Serial, SmartTel, Total Endurance and WiperLock are trademarks of Microchip Technology Incorporated in the U.S.A. and other countries.

SQTP is a service mark of Microchip Technology Incorporated in the U.S.A.

All other trademarks mentioned herein are property of their respective companies.

© 2005, Microchip Technology Incorporated, Printed in the U.S.A., All Rights Reserved.

 Printed on recycled paper.

**QUALITY MANAGEMENT SYSTEM**  
**CERTIFIED BY DNV**  
**== ISO/TS 16949:2002 ==**

*Microchip received ISO/TS-16949:2002 quality system certification for its worldwide headquarters, design and wafer fabrication facilities in Chandler and Tempe, Arizona and Mountain View, California in October 2003. The Company's quality system processes and procedures are for its PICmicro® 8-bit MCUs, KEELOQ® code hopping devices, Serial EEPROMs, microperipherals, nonvolatile memory and analog products. In addition, Microchip's quality system for the design and manufacture of development systems is ISO 9001:2000 certified.*

---

---

**Table of Contents**

---

---

<b>Preface .....</b>	<b>1</b>
<b>Chapter 1. Product Overview .....</b>	<b>5</b>
1.1 Introduction .....	5
1.2 What is the MCP1630 Dual Buck Demo Board? .....	6
1.3 What the MCP1630 Dual Buck Demo Board Kit Includes .....	6
<b>Chapter 2. Installation and Operation .....</b>	<b>7</b>
2.1 Introduction .....	7
2.2 Features .....	7
2.3 Getting Started .....	7
<b>Appendix A. Schematic and Layouts .....</b>	<b>11</b>
A.1 Introduction and Highlights .....	11
A.2 Board Schematic - Sheet 1 .....	12
A.3 Board Schematic - Sheet 2 .....	13
A.4 Board Outline .....	14
A.5 Board Top Layer .....	15
A.6 Board Mid-Layer 1 .....	16
A.7 Board Mid-Layer 2 .....	17
A.8 Board Bottom Layer .....	18
<b>Appendix B. Bill-Of-Materials (BOM) .....</b>	<b>19</b>
<b>Appendix C. Evaluation Board Firmware .....</b>	<b>21</b>
C.1 Device Firmware .....	21
<b>Worldwide Sales and Service .....</b>	<b>22</b>

# MCP1630 Dual Buck Demo Board User's Guide

---

NOTES:

---

---

## Preface

---

---

### NOTICE TO CUSTOMERS

All documentation becomes dated, and this manual is no exception. Microchip tools and documentation are constantly evolving to meet customer needs, so some actual dialogs and/or tool descriptions may differ from those in this document. Please refer to our web site ([www.microchip.com](http://www.microchip.com)) to obtain the latest documentation available.

Documents are identified with a “DS” number. This number is located on the bottom of each page, in front of the page number. The numbering convention for the DS number is “DSXXXXA”, where “XXXX” is the document number and “A” is the revision level of the document.

For the most up-to-date information on development tools, see the MPLAB® IDE on-line help. Select the Help menu, and then Topics to open a list of available on-line help files.

## INTRODUCTION

This chapter contains general information that will be useful to know before using the MCP1630 Dual Buck Demo Board. Items discussed in this chapter include:

- About This Guide
- Recommended Reading
- The Microchip Web Site
- Customer Support

## ABOUT THIS GUIDE

### Document Layout

This document describes how to use the MCP1630 Dual Buck Demo Board as a development tool to emulate and debug firmware on a target board. The manual layout is as follows:

- **Chapter 1: Overview** – Important information about the MCP1630 Dual Buck Demo Board.
- **Chapter 2: MCP1630 Dual Buck Demo Board** – Includes instructions on how to get started with this demo board and a description of the demo board operation.
- **Appendix A: Schematic and Layouts** – Shows the schematic and layout diagrams for the MCP1630 Dual Buck Demo Board.
- **Appendix B: Bill-of-Materials** – Lists the parts used to build the MCP1630 Dual Buck Demo Board.
- **Appendix C: Firmware** - Provides information about the application firmware and where the source code can be found.

# MCP1630 Dual Buck Demo Board User's Guide

## Conventions Used in this Guide

This manual uses the following documentation conventions:

### DOCUMENTATION CONVENTIONS

Description	Represents	Examples
<b>Arial font:</b>		
Italic characters	Referenced books	<i>MPLAB® IDE User's Guide</i>
	Emphasized text	...is the <i>only</i> compiler...
Initial caps	A window	the Output window
	A dialog	the Settings dialog
	A menu selection	select Enable Programmer
Quotes	A field name in a window or dialog	"Save project before build"
Underlined, italic text with right angle bracket	A menu path	<u>File&gt;Save</u>
Bold characters	A dialog button	Click <b>OK</b>
	A tab	Click the <b>Power</b> tab
'bnnnn'	A binary number where <i>n</i> is a digit	'b00100, 'b10
Text in angle brackets < >	A key on the keyboard	Press <Enter>, <F1>
<b>Courier font:</b>		
Plain Courier	Sample source code	#define START
	Filenames	autoexec.bat
	File paths	c:\mcc18\h
	Keywords	_asm, _endasm, static
	Command-line options	-Opa+, -Opa-
	Bit values	0, 1
Italic Courier	A variable argument	<i>file.o</i> , where <i>file</i> can be any valid filename
0xn timer	A hexadecimal number where <i>n</i> is a hexadecimal digit	0xFFFF, 0x007A
Square brackets [ ]	Optional arguments	mcc18 [options] <i>file</i> [options]
Curly brackets and pipe character: {   }	Choice of mutually exclusive arguments; an OR selection	errorlevel {0 1}
Ellipses...	Replaces repeated text	var_name [, var_name...]
	Represents code supplied by user	void main (void) { ... }

## RECOMMENDED READING

This user's guide describes how to use the MCP1630 Dual Buck Demo Board. Other useful documents are listed below. The following Microchip documents are available and recommended as supplemental reference resources.

**MCP1630 Data Sheet, "High-Speed, Microcontroller-Adaptable, Pulse Width Modulator", DS21896**

**MCP1630 NiMH Demo Board User's Guide, DS51505**

**AN960 - "New Components and Design Methods Bring Intelligence to Battery Charger Applications", DS00960**

## THE MICROCHIP WEB SITE

Microchip provides online support via our web site at [www.microchip.com](http://www.microchip.com). This web site is used as a means to make files and information easily available to customers. Accessible by using your favorite Internet browser, the web site contains the following information:

- **Product Support** – Data sheets and errata, application notes and sample programs, design resources, user's guides and hardware support documents, latest software releases and archived software
- **General Technical Support** – Frequently Asked Questions (FAQs), technical support requests, online discussion groups, Microchip consultant program member listing
- **Business of Microchip** – Product selector and ordering guides, latest Microchip press releases, listing of seminars and events, listings of Microchip sales offices, distributors and factory representatives

## CUSTOMER SUPPORT

Users of Microchip products can receive assistance through several channels:

- Distributor or Representative
- Local Sales Office
- Field Application Engineer (FAE)
- Technical Support
- Development Systems Information Line

Customers should contact their distributor, representative or field application engineer (FAE) for support. Local sales offices are also available to help customers. A listing of sales offices and locations is included in the back of this document.

Technical support is available through the web site at: <http://support.microchip.com>

In addition, there is a Development Systems Information Line which lists the latest versions of Microchip's development systems software products. This line also provides information on how customers can receive currently available upgrade kits.

The Development Systems Information Line numbers are:

1-800-755-2345 – United States and most of Canada

1-480-792-7302 – Other International Locations

## REVISION HISTORY

### Revision A (February 2005)

- Initial Release of this Document.

# MCP1630 Dual Buck Demo Board User's Guide

---

NOTES:



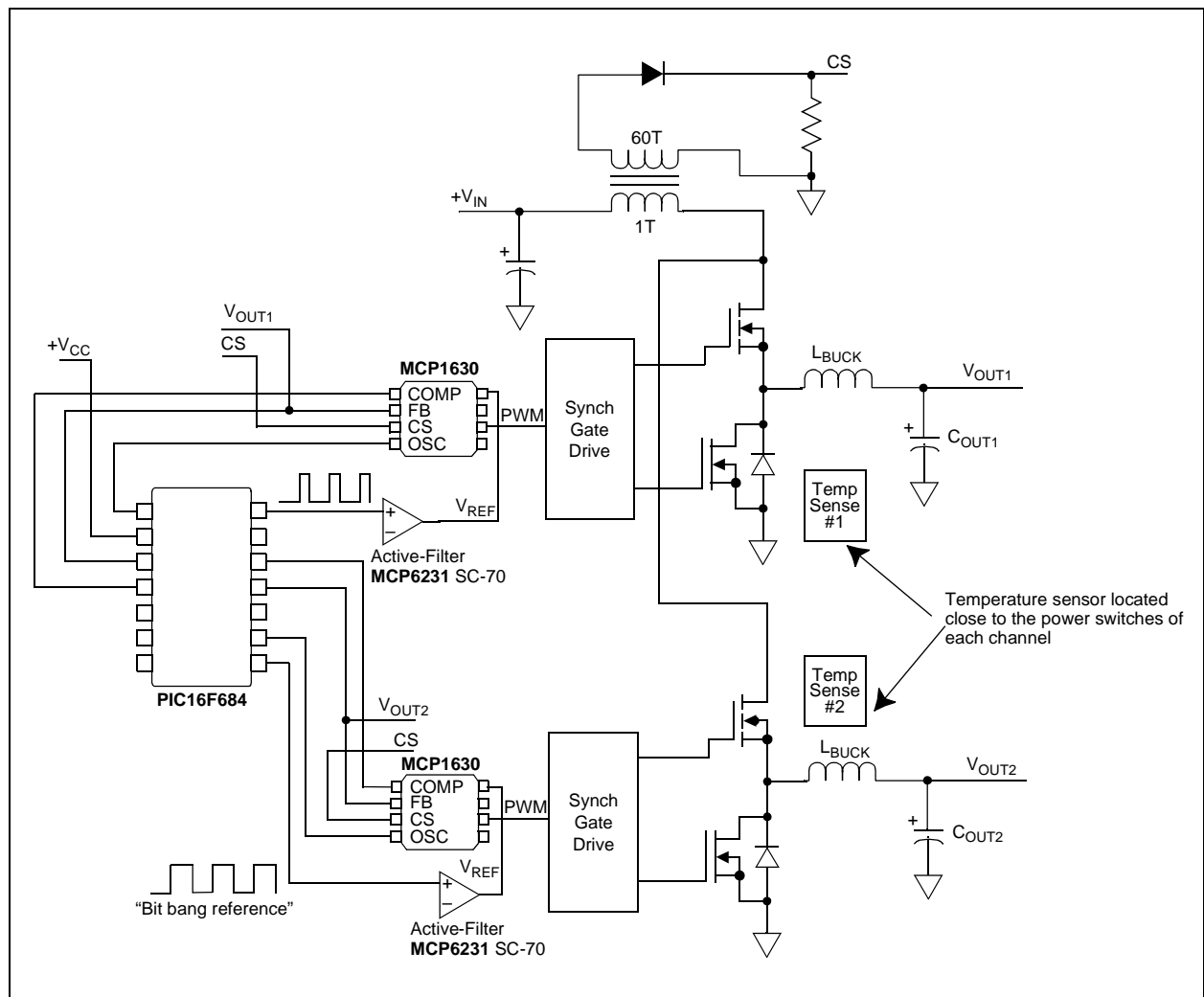
## Chapter 1. Product Overview

### 1.1 INTRODUCTION

The MCP1630 Dual Buck Demo Board is used to evaluate the Microchip MCP1630 analog, high-speed Pulse Width Modulator (PWM) used in a dual synchronous, buck regulator, power-converter application. The evaluation board is a complete, stand-alone, dual-output, dc-dc converter with +12V input, adjustable dual output at 20A per output.

This chapter also covers the following topics:

- What is the MCP1630 Dual Buck Demo Board?
- What the MCP1630 Dual Buck Demo Board kit includes.



**FIGURE 1-1:** Dual Buck Demo Board Block Diagram.

# MCP1630 Dual Buck Demo Board User's Guide

---

## 1.2 WHAT IS THE MCP1630 DUAL BUCK DEMO BOARD?

The MCP1630 Dual Buck Demo Board is a complete, stand-alone, dual-output power supply capable of 20A per output, powered from a +12V input source. This board utilizes Microchip's MCP1630 (high-speed PIC<sup>®</sup> MCU PWM MSOP8), PIC16F684 (MCU Flash TSSOP14), MCP6231U (Op Amp SC-70) and TC6501 (Temperature Switch SOT23A-5). The input voltage range for the demo board is +9.0V to +13.5V. Both adjustable regulated outputs are capable of 20A.

Input terminals are provided to apply an input voltage to the power supply. Output terminals are also provided as a way to connect the 20A outputs to a load.

## 1.3 WHAT THE MCP1630 DUAL BUCK DEMO BOARD KIT INCLUDES

This MCP1630 Dual Buck Demo Board Kit includes:

- The MCP1630 Dual Buck Demo Board
- MCP1630 Dual Buck Demo Board User's Guide (DS51531)
- MCP1630 Data Sheet (DS21896)

---

## Chapter 2. Installation and Operation

---

### 2.1 INTRODUCTION

The MCP1630 Dual Buck Demo Board demonstrates Microchip's MCP1630 high-speed PWM, used in an adjustable, dual-output, buck regulator application. The MCP1630 is a high-speed, microcontroller-adaptable, PWM that, when used in conjunction with a microcontroller, will control the power system duty cycle to provide output voltage regulation. The PIC16F684 microcontroller can be used to regulate output voltage or current, switching frequency and setting maximum duty cycle. The MCP1630 generates duty cycle, provides fast overcurrent protection and utilizes variable external inputs. External signals include the input oscillator and the reference voltage. The power train signals include the current sense and the feedback voltage. The output signal is a square-wave pulse. The power train used for the MCP1630 Dual Buck Demo Board is a dual synchronous buck regulator.

### 2.2 FEATURES

The MCP1630 Dual Buck Demo Board has the following features:

- Input Voltage Range: +9.0V to +13.5V
- Adjustable Output Voltage Capable of Calibration
- Sequencing or Tracking Outputs
- Outputs are 180° out of phase, each capable of 20A
- Independent Overcurrent Protection
- Independent Overtemperature Protection
- Input Overvoltage and Undervoltage Lockout (UVLO)
- Power Good Indication (LED) with Adjustable Delay
- Switching Frequency Dithering

### 2.3 GETTING STARTED

The MCP1630 Dual Buck Demo Board is fully assembled and tested over its range of input voltage, output voltage and output current. This board requires the use of an external input voltage source (+9.0V to +13.5V) and external load (electronic or resistive).

<p><b>Note:</b> It is recommended that a minimum 300 linear feet per minute of airflow blown directly across the board to cool the power dissipating components when operating above 10A loads.</p>
---

## 2.3.1 Power Input and Output Connections

### Powering the MCP1630 Dual Buck Demo Board.

1. Apply the input voltage to the connector (J3) provided. Connect the positive side of the input source (+) to the test point (J3-1). Connect the negative (or return side (-)) of the input source to the GND terminal (J3-2). J3 is the center two position terminal block located on the left side of the board. A 14-gauge wire size is recommended for evaluating the board at 20A per output. The power supply input voltage must be in the specified operating range for the board to operate. An undervoltage lockout circuit prevents the converter from running when the input voltage is too low.
2. An on/off push-button switch (SW3) is used to turn the converter outputs on and off. During normal power-up, the outputs are turned on by pressing SW3 once. To turn the outputs off, press SW3 again.
3. In the event of a fault, (input voltage out-of-range, output voltage out-of-range or power train overtemperature), both  $V_{OUT1}$  and  $V_{OUT2}$  will shut down, indicated by the D1 power good LED flashing. To restart, the input voltage must be brought to 0V and raised back to the specified input voltage range of the converter prior to pressing the on/off button. A solid D1 power good LED indicates that the regulator outputs are operating properly at their programmed values.

### Applying the load to the MCP1630 Dual Buck Demo Board.

1. To apply a load to  $V_{OUT1}$  of the MCP1630 Dual Buck Demo Board, the positive side of the  $V_{O1}$  load (+) should be connected to the terminal  $+V_{O1}$  (J2-2). The negative side of the  $V_{O1}$  load should be connected to the terminal GND (J2-1).
2. To apply a load to  $V_{OUT2}$  of the MCP1630 Dual Buck Demo Board, the positive side of the  $V_{O2}$  load (+) should be connected to the terminal  $+V_{O2}$  (J4-2). The negative side of the  $V_{O2}$  load should be connected to the terminal GND (J4-1).
3. Outputs  $V_{O1}$  and  $V_{O2}$  are independent of each other and are loaded separately. Both outputs have independent over current protection, overtemperature and short-circuit protection.

**Note:** The maximum rated load is 20A per output. When loading the board over 10A, airflow is necessary to prevent the overtemperature protection circuitry from automatically turning off the power train that has the overtemperature condition.

## 2.3.2 Power Present and Power Good Indication

1. The MCP1630 Dual Buck Demo Board has two status LED's. One LED (D3) is used to determine if input voltage is present.
2. The second LED (D1) is used for fault and power good indication. During normal operation, if both regulator outputs are within regulation, D1 is illuminated to provide indication that power is good. If either output is out of regulation, D1 will blink, providing indication that one or both of the outputs are not in regulation.

## 2.3.3 Programming

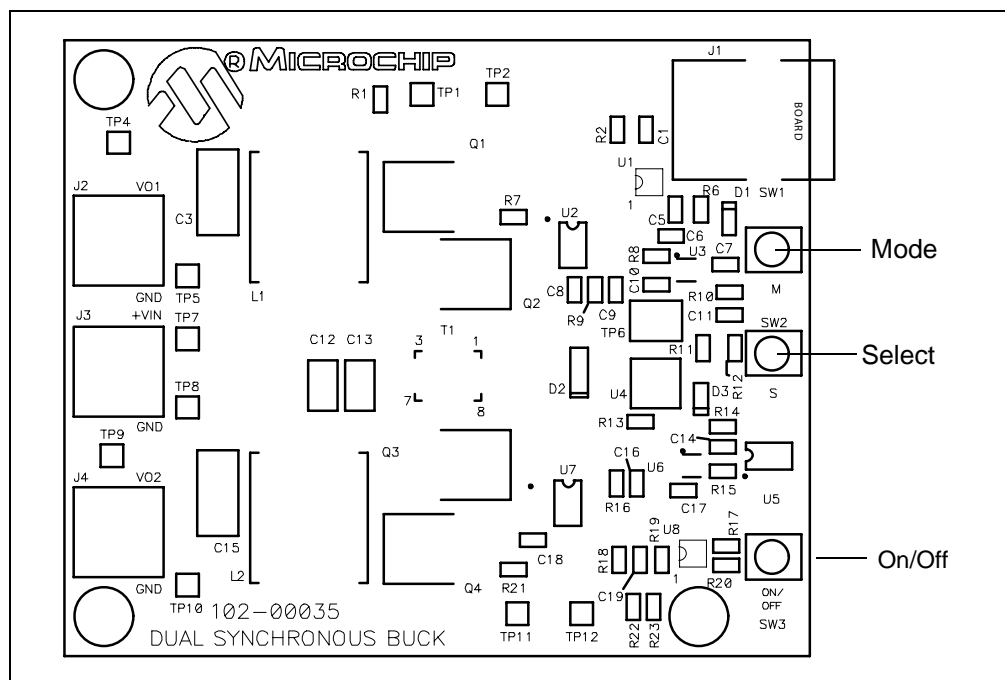
1. The MCP1630 Dual Buck Demo Board can be programmed to calibrate  $V_{OUT1}$ ,  $V_{OUT2}$ , output sequencing or tracking and switching frequency dithering on or off.
2. To enter the programming mode, apply input voltage within the specified operating range (9V to 13.5V). Press and hold the M (SW1) button. While still holding the M button, press and release the on/off (SW3) button. The flashing rate of LED D1 should increase, indicating Programming mode.
3. Once in Programming mode, the first variable to set is  $V_{OUT1}$ . Press the select S button to increase  $V_{OUT1}$ . Keep pressing the S button to increase  $V_{OUT1}$  until it wraps around to the minimum setting.

**Note:** The range of  $V_{OUT1}$  is controlled by the value of fixed resistors  $R_{34}$ ,  $R_{35}$  and  $R_{10}$ . The range of  $V_{OUT1}$  is typically from 2.42V (minimum) to 3.39V (maximum).

4. Press M once to select  $V_{OUT2}$ .  $V_{OUT2}$  is increased by pressing the S button similar to setting  $V_{OUT1}$ .

**Note:** The range of  $V_{OUT2}$  is controlled by the value of fixed resistors  $R_{14}$ ,  $R_{15}$  and  $R_{42}$ . The range of  $V_{OUT2}$  is typically from 1.22V (minimum) to 2.3V (maximum).

5. Press M once to select between output sequencing or tracking. D1 flashing indicates that sequencing is selected. Press M to change from sequencing to tracking, or from tracking to sequencing.
6. Press M once to select between frequency dithering on and frequency dithering off. D1 flashing indicates that frequency dithering is selected.
7. By pressing and holding the M button, the selected settings will be programmed. The next power-up cycle for the converter will return to the programmed settings.



# MCP1630 Dual Buck Demo Board User's Guide

---

NOTES:

---

## **Appendix A. Schematic and Layouts**

---

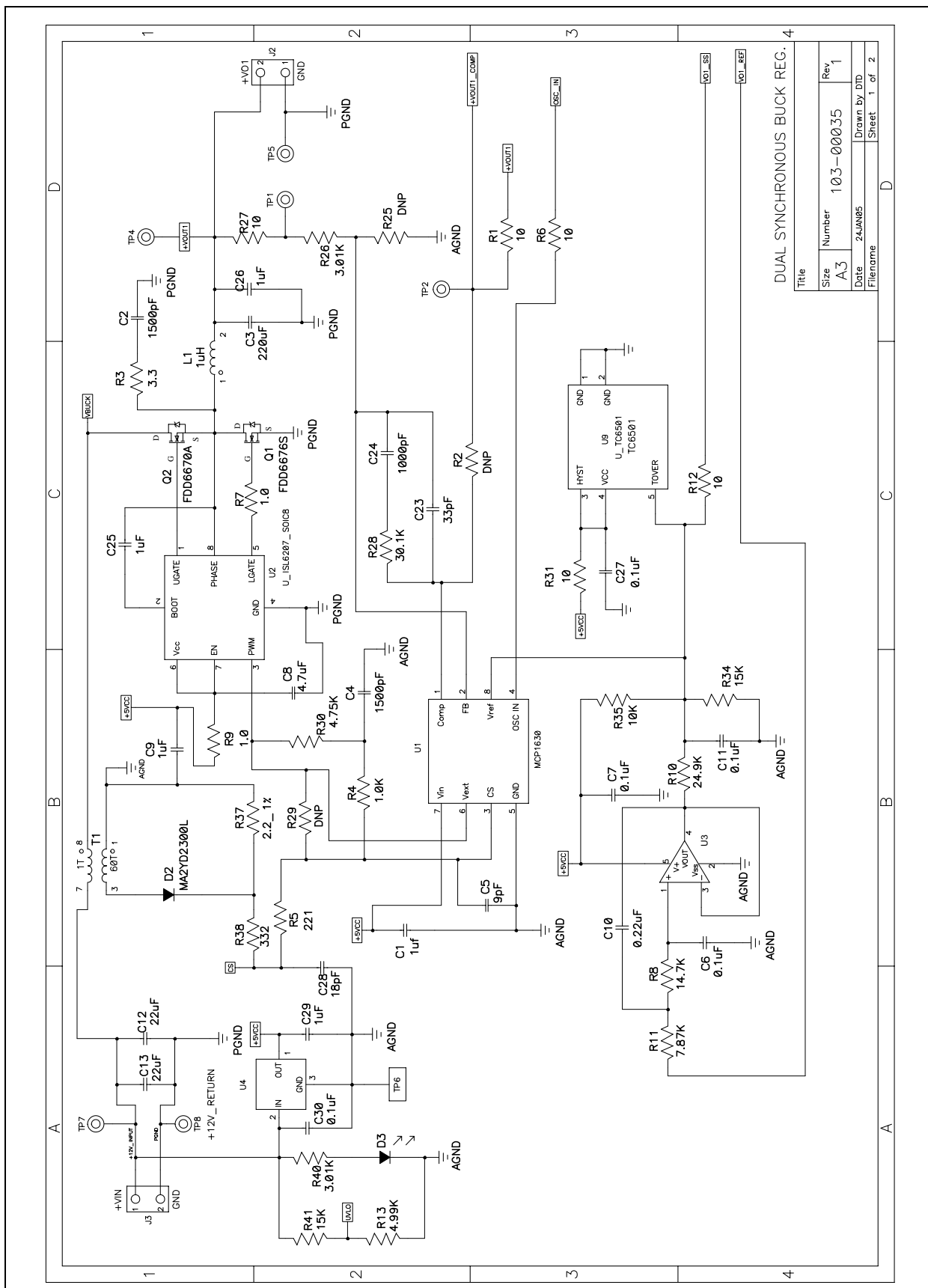
### **A.1 INTRODUCTION AND HIGHLIGHTS**

This appendix contains the following schematics and layouts for the MCP1630 Dual Buck Demo Board:

- Board Schematic
- Board Outline
- Board - Top Layer
- Board - Mid Layer 1
- Board - Mid Layer 2
- Board - Bottom Layer

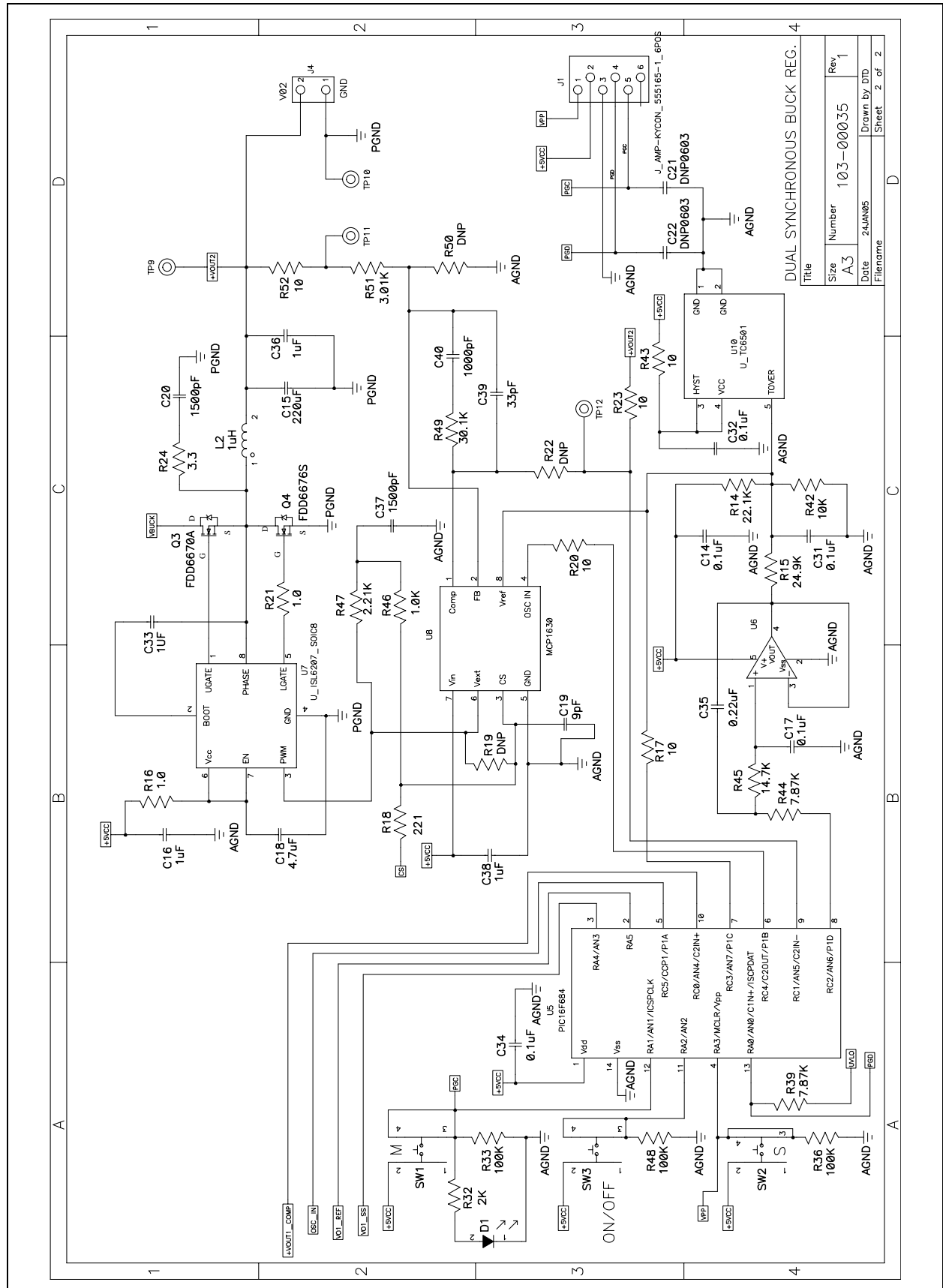
# MCP1630 DUAL BUCK DEMO BOARD USER'S GUIDE

## A.2 BOARD SCHEMATIC - SHEET 1



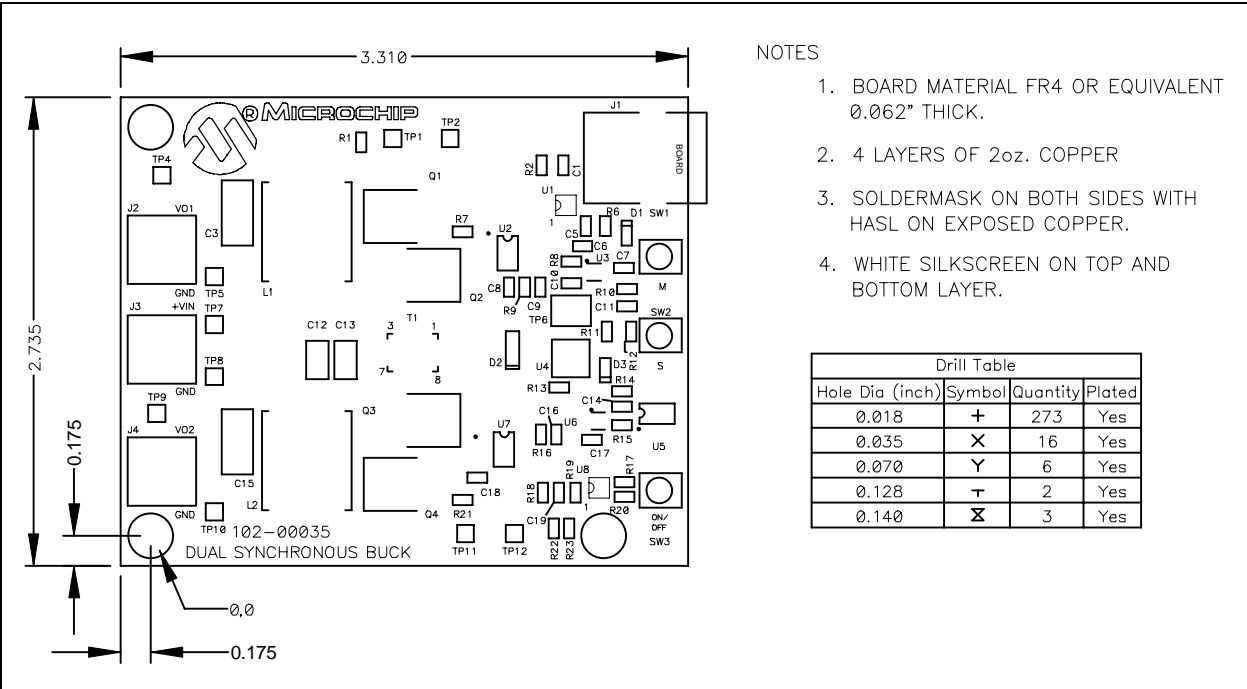


## A.3 BOARD SCHEMATIC - SHEET 2

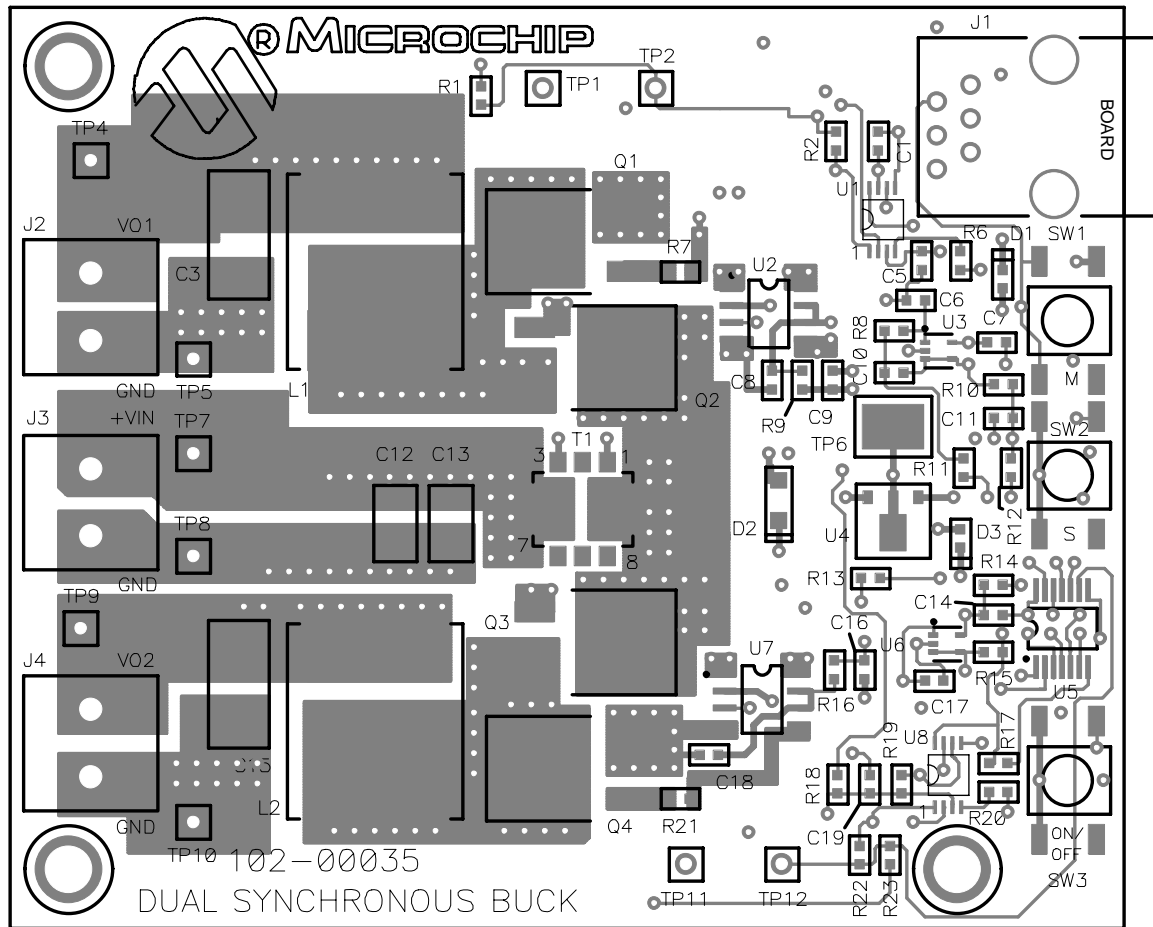


# MCP1630 DUAL BUCK DEMO BOARD USER'S GUIDE

## A.4 BOARD OUTLINE

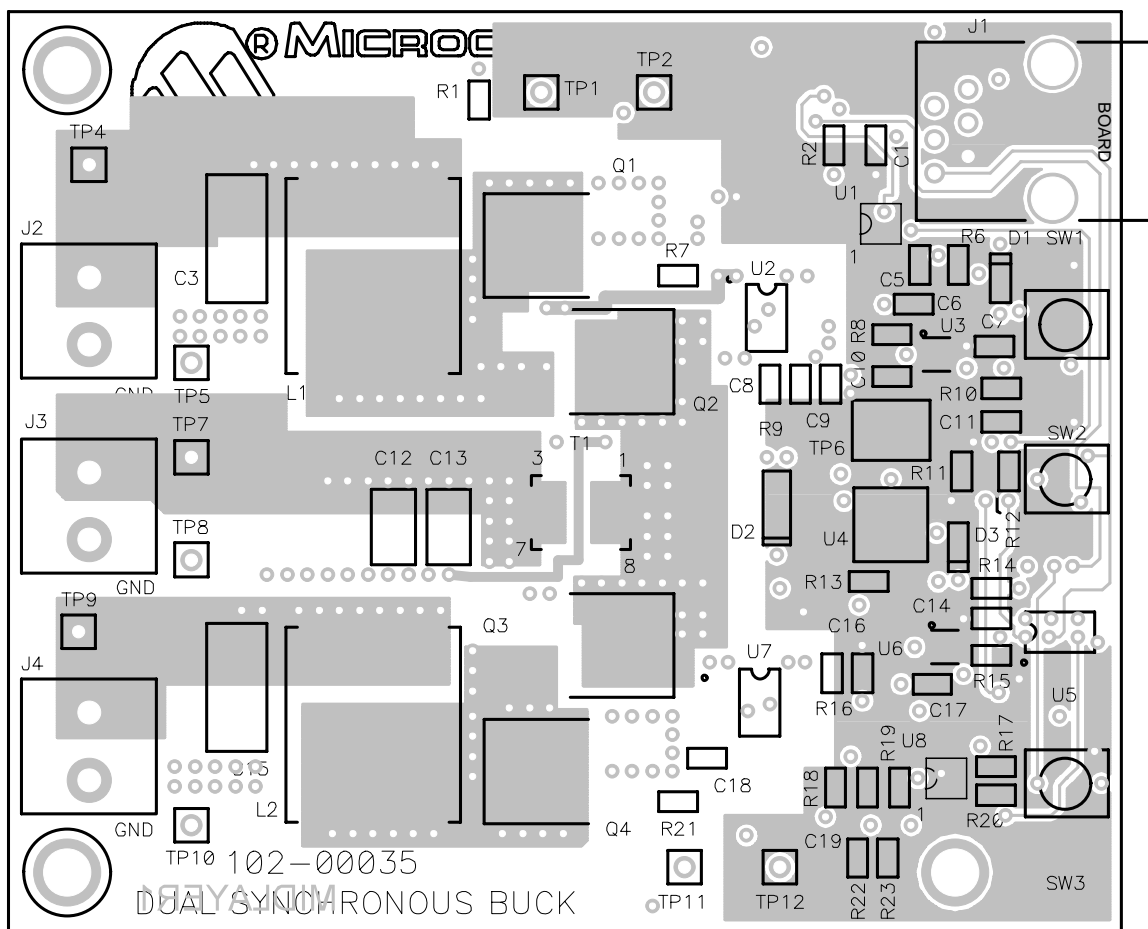


## A.5 BOARD TOP LAYER



# MCP1630 DUAL BUCK DEMO BOARD USER'S GUIDE

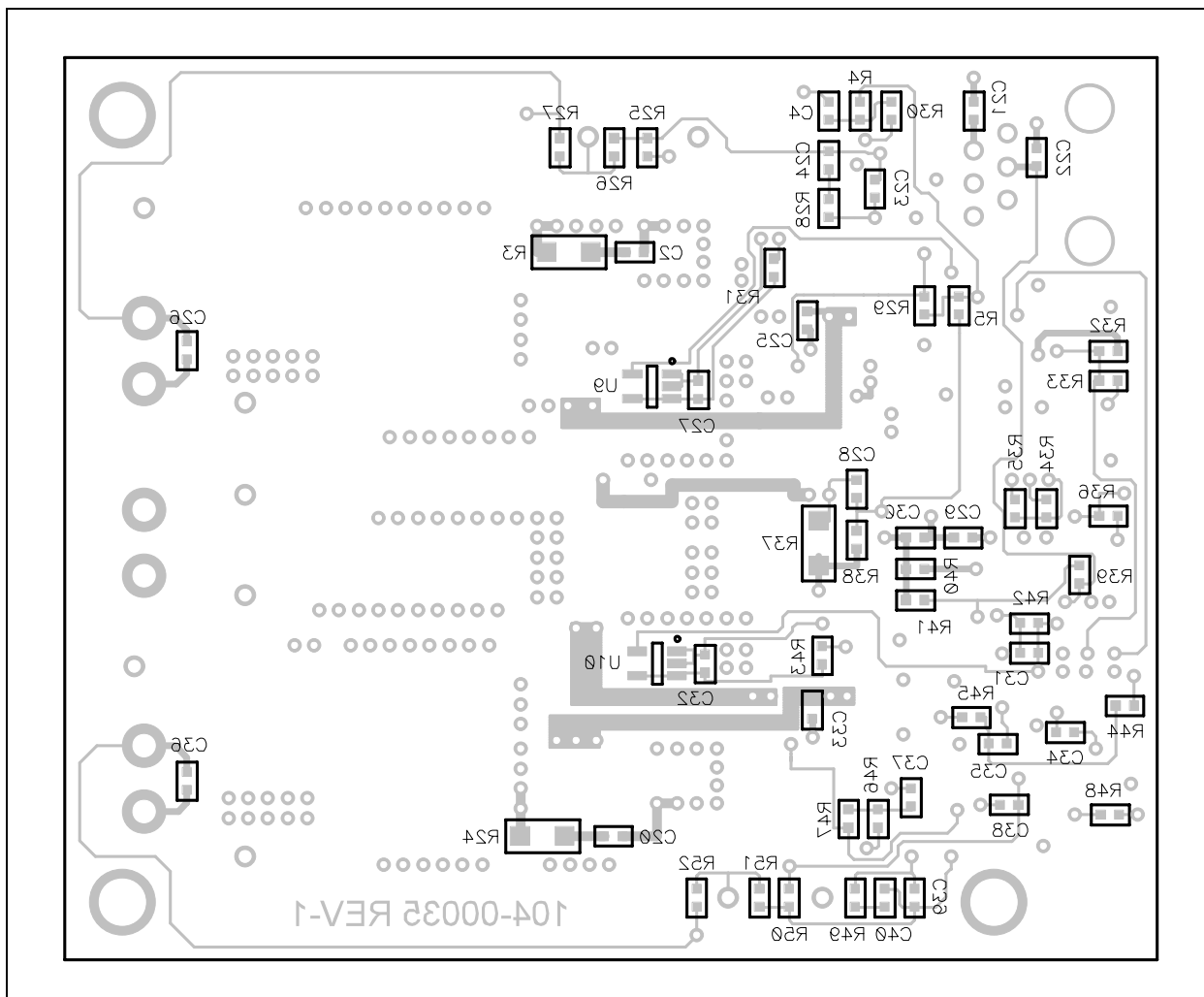
## A.6 BOARD MID-LAYER 1





# MCP1630 DUAL BUCK DEMO BOARD USER'S GUIDE

## A.8 BOARD BOTTOM LAYER



## Appendix B. Bill-Of-Materials (BOM)

**TABLE B-1: BILL-OF-MATERIALS (BOM)**

Qty	Reference	Description	Manufacturer	Part Number
9	C1, C9, C16, C25, C26, C29, C33, C36, C38	CAP 1.0UF 10V CERAMIC X5R 0603	Panasonic® - ECG	ECJ-1VB1A105K
4	C2, C4, C20, C37	CAP 1500PF 50V CERAMIC NPO 0603	Panasonic - ECG	ECJ-1VB1H152K
2	C3, C15	CAP 220UF 4V AO X7343	Kemet Electronics®	A700X227M004ATE015
2	C5, C19	CAP 9.0PF 50V CERAMIC NPO 0603	Panasonic - ECG	ECJ-1VC1H090D
10	C6, C7, C11, C14, C17, C27, C30, C31, C32, C34	CAP .10UF 10V CERAMIC X7R 0603	Kemet Electronics	C0603C104K8RACTU
2	C8, C18	CAP 4.7UF 10V CERAMIC X5R 0603	Panasonic - ECG	ECJ-1VB0J475M
2	C10, C35	CAP .22UF 10V CERAMIC X5R 0603	Panasonic - ECG	ECJ-1VB1A224K
2	C12, C13	CAP 22UF 16V CERAMIC X5R 1210	TDK Electronics Corporation	C3225X5R1C226M
2	C21, C22	CAP DNP0603		
2	C23, C39	CAP 33PF 50V CERAMIC NPO 0603	Panasonic - ECG	ECJ-1VC1H330J
2	C24, C40	CAP 1000PF 50V CERAMIC NPO 0603	Panasonic - ECG	ECJ-1VC1H102J
1	C28	CAP CERAMIC 18PF 50V 0603 SMD	Panasonic - ECG	ECJ-1VC1H180J
2	D1, D3	LED 660NM SUPER RED DIFF 0603SMD	Lumex® Opto/Components Inc.	SML-LX0603SRW-TR
1	D2	DIODE SCHOTTKY 25V 1.0A MINI-2P	Panasonic - SSG	MA2YD2300L
1	J1	CONN MOD JACK 6-6 R/A PCB 50AU	AMP/Tyco Electronics	555165-1
3	J2, J3, J4	CONN TERM BLOCK 2POS 5MM PCB	Phoenix Contact®	1715022
2	L1, L2	HIGH CURRENT SMT 1UH INDUCTORS	Cooper Electronics	HC1-1R1
2	Q1, Q4	N-CHANNEL MOSFET DPAK	Fairchild® Semiconductor	FDD6676S
2	Q2, Q3	N-CHANNEL MOSFET DPAK	Fairchild Semiconductor	FDD6670A
10	R1, R6, R12, R17, R20, R23, R27, R31, R43, R52	RES 10.0 OHM 1/16W 1% 0603 SMD	Panasonic - ECG	ERJ-3EKF10R0V
6	R2, R19, R22, R25, R29, R50	RES DNP0603		
2	R3, R24	RES 3.30 OHM 1/4W 1% 1206 SMD	Yageo America	9C12063A3R30FGHFT
2	R4, R46	RES 1.00K OHM 1/16W 1% 0603 SMD	Panasonic - ECG	P1.00KHCT-ND
2	R5, R18	RES 221 OHM 1/16W 1% 0603 SMD	Panasonic - ECG	ERJ-3EKF2210V
4	R7, R9, R16, R21	RESISTOR 1.0 OHM 1/10W 5% 0603	Panasonic - ECG	ERJ-3GEYJ1R0V
2	R8, R45	RES 14.7K OHM 1/16W 1% 0603 SMD	Panasonic - ECG	ERJ-3EKF1472V
2	R10, R15	RES 24.9K OHM 1/16W 1% 0603 SMD	Panasonic - ECG	ERJ-3EKF2492V
3	R11, R39, R44	RES 7.87K OHM 1/16W 1% 0603 SMD	Panasonic - ECG	ERJ-3EKF7871V
1	R13	RES 4.99K OHM 1/16W 1% 0603 SMD	Panasonic - ECG	ERJ-3EKF4991V

# MCP1630 Dual Buck Demo Board User's Guide

TABLE B-1: BILL-OF-MATERIALS (BOM) (CONTINUED)

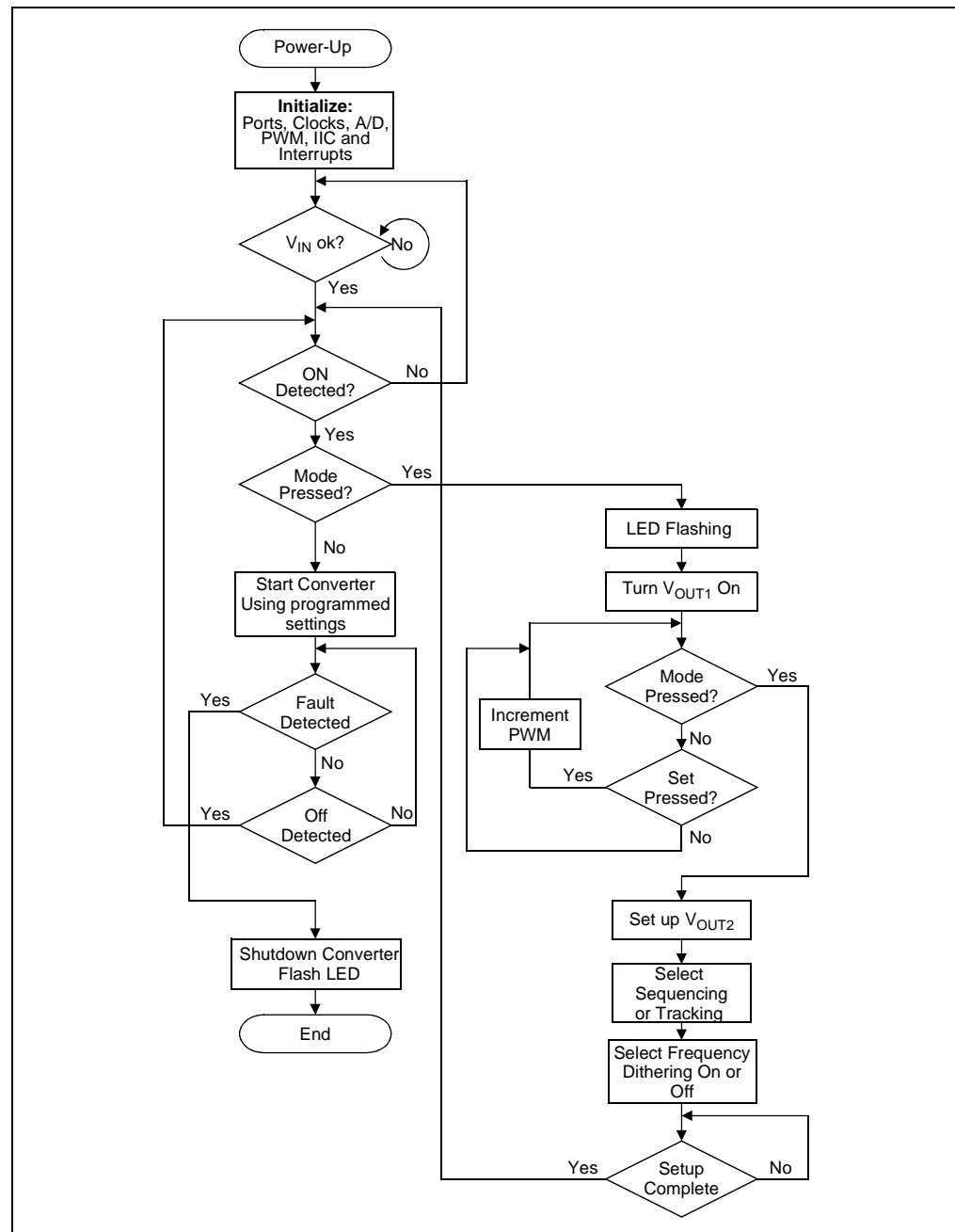
Qty	Reference	Description	Manufacturer	Part Number
1	R14	RES 22.1K OHM 1/16W 1% 0603 SMD	Panasonic - ECG	ERJ-3EKF2212V
3	R26, R40, R51	RES 3.01K OHM 1/16W 1% 0603 SMD	Panasonic - ECG	ERJ-3EKF3011V
2	R28, R49	RES 30.1K OHM 1/16W 1% 0603 SMD	Panasonic - ECG	ERJ-3EKF3012V
1	R30	RES 4.75K OHM 1/16W 1% 0603 SMD	Panasonic - ECG	ERJ-3EKF4751V
1	R32	RES 2.0K OHM 1/10W 5% 0603 SMD	Panasonic - ECG	ERJ-3GEYJ202V
3	R33, R36, R48	RES 100K OHM 1/16W 1% 0603 SMD	Panasonic - ECG	ERJ-3EKF1003V
2	R34, R41	RES 15.0K OHM 1/16W 1% 0603 SMD	Panasonic - ECG	ERJ-3EKF1502V
2	R35, R42	RES 10.0K OHM 1/16W 1% 0603 SMD	Panasonic - ECG	ERJ-3EKF1002V
1	R37	RES 2.2 OHM 1/4W 1% 1206 SMD	Panasonic - ECG	ERJ-8RQF2R2V
1	R38	RES 332 OHM 1/16W 1% 0603 SMD	Panasonic - ECG	ERJ-3EKF3320V
1	R47	RES 2.21K OHM 1/16W 1% 0603 SMD	Panasonic - ECG	P2.21KHCT-ND
3	SW1, SW2, SW3	SWITCH TACT 6MM 260GF SMT	E-Switch Inc.	TL3301NF260QG
1	T1	SMD Current Sense Transformer	Datatronics™	CT323-060
1	TP6	PC TEST POINT COMPACT SMT	Keystone Electronics	5016
2	U1, U8	High Speed Analog PWM MSOP8	Microchip Technology Inc.	MCP1630I
2	U2, U7	Intersil ISL6207 MOSFET Driver SOIC8 Package	Intersil®	ISL6207CBZ
2	U3, U6	5 Lead SC70 OP AMP	Microchip Technology Inc.	MCP6231U
1	U4	General Purpose Low Current Regulator	Texas Instruments™	UA78L05ACPK
1	U5	IC PIC® MCU FLASH 2KX14 14TSSOP	Microchip Technology Inc.	PIC16F684-I/ST
2	U9, U10	MCP6501 TEMPERATURE SWITCH 75°C	Microchip Technology Inc.	TC6501P075VCTTR



## Appendix C. Evaluation Board Firmware

### C.1 DEVICE FIRMWARE

For the latest version of the MCP1630 Dual Buck Demo Board firmware, visit the Microchip web site at [www.microchip.com](http://www.microchip.com).



**FIGURE C-1:** Firmware Flowcharge - Page 1.



---

## WORLDWIDE SALES AND SERVICE

---

### AMERICAS

#### Corporate Office

2355 West Chandler Blvd.  
Chandler, AZ 85224-6199  
Tel: 480-792-7200  
Fax: 480-792-7277  
Technical Support:  
<http://support.microchip.com>  
Web Address:  
[www.microchip.com](http://www.microchip.com)

#### Atlanta

Alpharetta, GA  
Tel: 770-640-0034  
Fax: 770-640-0307

#### Boston

Westford, MA  
Tel: 978-692-3848  
Fax: 978-692-3821

#### Chicago

Itasca, IL  
Tel: 630-285-0071  
Fax: 630-285-0075

#### Dallas

Addison, TX  
Tel: 972-818-7423  
Fax: 972-818-2924

#### Detroit

Farmington Hills, MI  
Tel: 248-538-2250  
Fax: 248-538-2260

#### Kokomo

Kokomo, IN  
Tel: 765-864-8360  
Fax: 765-864-8387

#### Los Angeles

Mission Viejo, CA  
Tel: 949-462-9523  
Fax: 949-462-9608

#### San Jose

Mountain View, CA  
Tel: 650-215-1444  
Fax: 650-961-0286

#### Toronto

Mississauga, Ontario,  
Canada  
Tel: 905-673-0699  
Fax: 905-673-6509

### ASIA/PACIFIC

#### Australia - Sydney

Tel: 61-2-9868-6733  
Fax: 61-2-9868-6755

#### China - Beijing

Tel: 86-10-8528-2100  
Fax: 86-10-8528-2104

#### China - Chengdu

Tel: 86-28-8676-6200  
Fax: 86-28-8676-6599

#### China - Fuzhou

Tel: 86-591-8750-3506  
Fax: 86-591-8750-3521

#### China - Hong Kong SAR

Tel: 852-2401-1200  
Fax: 852-2401-3431

#### China - Shanghai

Tel: 86-21-5407-5533  
Fax: 86-21-5407-5066

#### China - Shenyang

Tel: 86-24-2334-2829  
Fax: 86-24-2334-2393

#### China - Shenzhen

Tel: 86-755-8203-2660  
Fax: 86-755-8203-1760

#### China - Shunde

Tel: 86-757-2839-5507  
Fax: 86-757-2839-5571

#### China - Qingdao

Tel: 86-532-502-7355  
Fax: 86-532-502-7205

### ASIA/PACIFIC

#### India - Bangalore

Tel: 91-80-2229-0061  
Fax: 91-80-2229-0062

#### India - New Delhi

Tel: 91-11-5160-8631  
Fax: 91-11-5160-8632

#### Japan - Kanagawa

Tel: 81-45-471- 6166  
Fax: 81-45-471-6122

#### Korea - Seoul

Tel: 82-2-554-7200  
Fax: 82-2-558-5932 or  
82-2-558-5934

#### Singapore

Tel: 65-6334-8870  
Fax: 65-6334-8850

#### Taiwan - Kaohsiung

Tel: 886-7-536-4818  
Fax: 886-7-536-4803

#### Taiwan - Taipei

Tel: 886-2-2500-6610  
Fax: 886-2-2508-0102

#### Taiwan - Hsinchu

Tel: 886-3-572-9526  
Fax: 886-3-572-6459

### EUROPE

#### Austria - Weis

Tel: 43-7242-2244-399  
Fax: 43-7242-2244-393

#### Denmark - Ballerup

Tel: 45-4450-2828  
Fax: 45-4485-2829

#### France - Massy

Tel: 33-1-69-53-63-20  
Fax: 33-1-69-30-90-79

#### Germany - Ismaning

Tel: 49-89-627-144-0  
Fax: 49-89-627-144-44

#### Italy - Milan

Tel: 39-0331-742611  
Fax: 39-0331-466781

#### Netherlands - Drunen

Tel: 31-416-690399  
Fax: 31-416-690340

#### England - Berkshire

Tel: 44-118-921-5869  
Fax: 44-118-921-5820