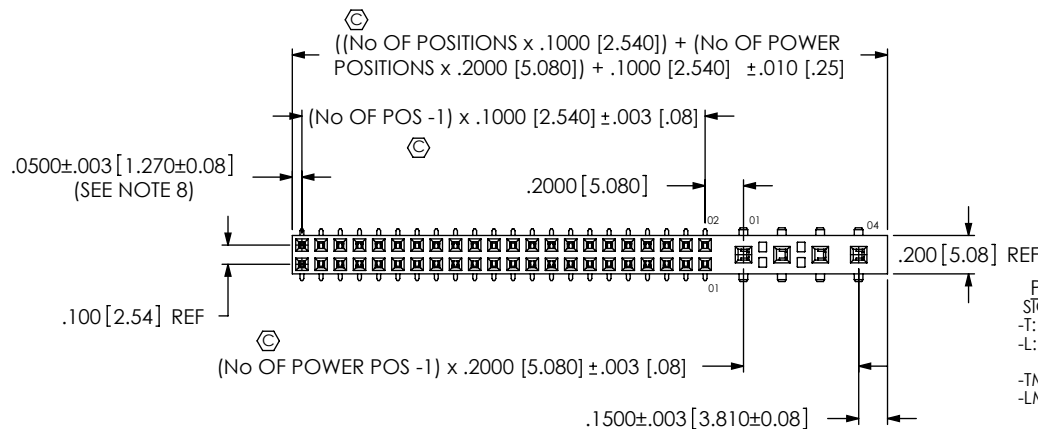


DO NOT
SCALE FROM
THIS PRINT

HPFC-1XX-XX-XX-D-XX-XX



No OF POSITIONS

-02 THRU -24
(PER ROW)

LEAD STYLE

-01: THROUGH HOLE
(C-95-01-X & C-130-01-XX)
-02: SURFACE MOUNT
(C-95-02-X & C-130-02-XX)

OPTION

-LC: LOCKING CLIP
(SEE NOTE 9 & 10)
-A: ALIGNMENT PIN
(USE HPFC-XX-D-XX-A)
-K: KAPTON PAD (SHEET 2)
(USE K-500-300)

POWER POSITIONS

-02 THRU -04
(USE C-130-XX-XX)

PLATING SPECIFICATION

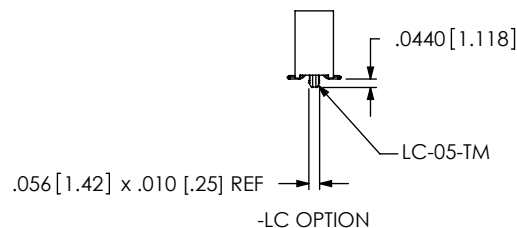
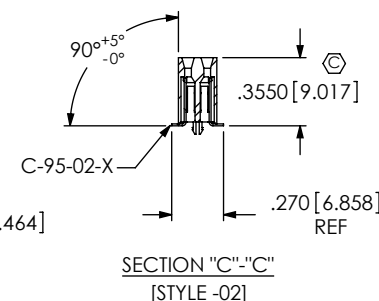
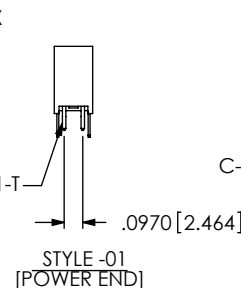
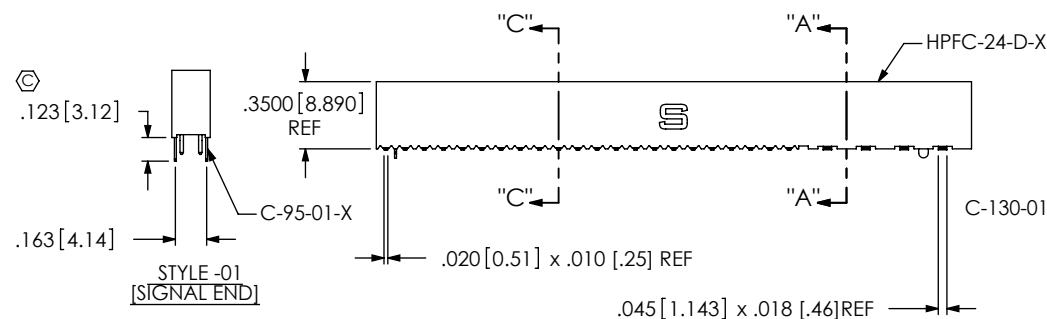
SIGNAL ONLY

-T: MATTE TIN ON CONTACT AND TAIL
-L: 10µ" LIGHT SELECTIVE GOLD IN CONTACT
AREA, MATTE TIN ON TAIL
-TM: MATTE TIN CONTACT AND TAIL
-LM: 10µ" LIGHT SELECTIVE GOLD IN CONTACT
AREA, MATTE TIN ON TAIL

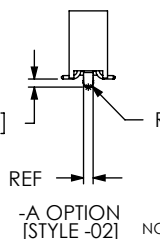
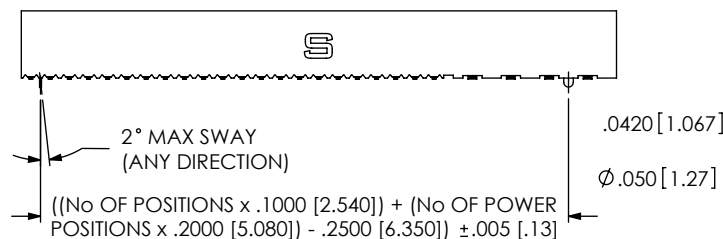
ROW SPECIFICATION

-D: DOUBLE (USE HPFC-24-D-X)

* = NOT ENGINEERING APPROVED

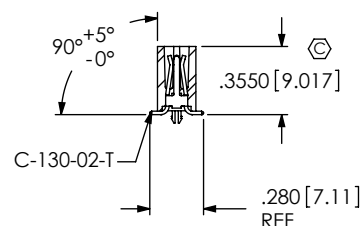
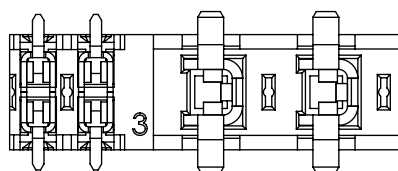
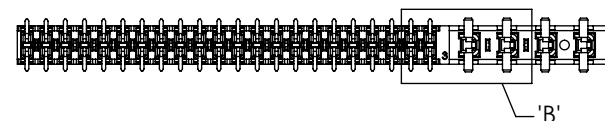


[STYLE -02]



NOTES:

1. ϕ REPRESENTS A CRITICAL DIMENSION.
2. COPLANARITY TO BE WITHIN .006" [.15] FOR 20 POSITION AND BELOW (SIGNAL) AND .008" [.20] FOR 21 -32 POS. (SIGNAL).
3. BURR ALLOWANCE: .003 [.08] MAX.
4. MAXIMUM CUT FLASH: .020 [.51].
5. MINIMUM PUSHOUT FORCE: 1 LB. MIN ON SIGNAL POSITIONS, 2 LB. MIN ON POWER POSITIONS.
6. MAXIMUM ALLOWABLE BOW: .005 INCH/INCH [MM/MM] AFTER ASSEMBLY.
7. OPEN PART OF POWER CONTACT FILLED TOWARDS SIGNAL CONTACTS.
8. MINIMUM WALL THICKNESS TO BE .010 [.25].
9. -LC OPTION NOT AVAILABLE WITH -01 LEAD STYLE.
10. DUE TO THE HIGH AMOUNT OF INSERTION FORCE NEEDED, THE -LC OPTION IS NOT COMPATIBLE WITH AUTO PLACEMENT, SAMTEC RECOMMENDS MANUAL PLACEMENT FOR ALL ASSEMBLIES WITH THE -LC OPTION.

SECTION "A"-"A"
[STYLE -02]DETAIL 'B'
SCALE 3:1UNLESS OTHERWISE SPECIFIED,
DIMENSIONS ARE IN INCHES.

TOLERANCES ARE:

DECIMALS ANGLES
.XX: ±.01 [.3]
.XXX: ±.005 [.13]
.XXXX: ±.0020 [.051]

PROPRIETARY NOTE

THIS DOCUMENT CONTAINS INFORMATION
CONFIDENTIAL AND PROPRIETARY TO
SAMTEC, INC. AND SHALL NOT BE REPRODUCED
OR TRANSFERRED TO OTHER DOCUMENTS OR
DISCLOSED TO OTHERS OR USED FOR ANY
PURPOSE OTHER THAN THAT WHICH IT WAS
OBTAINED WITHOUT THE EXPRESSED WRITTEN
CONSENT OF SAMTEC, INC.

MATERIAL:

DO NOT SCALE DRAWING
INSULATOR: VECTRA E130i COLOR: BLACK
POWER CONTACT: BeCu 174HT
SIGNAL CONTACT: PHOS BRONZE CDA510

SHEET SCALE: 1:1

DESCRIPTION:

.200 [5.08] POWER COMBO SOCKET ASSEMBLY

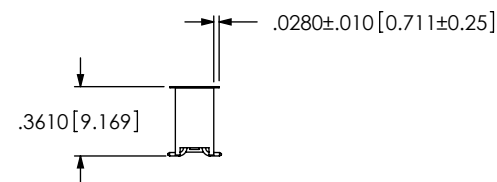
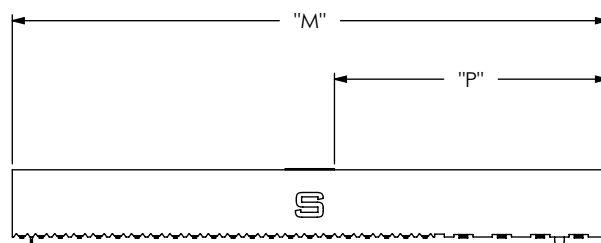
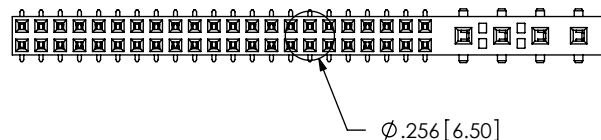
DWG. NO.

HPFC-1XX-XX-XX-D-XX-XX

BY: DEAN P

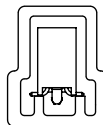
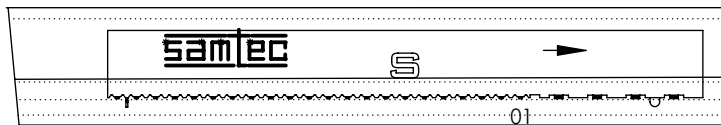
01/06/1999

SHEET 1 OF 2

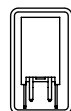
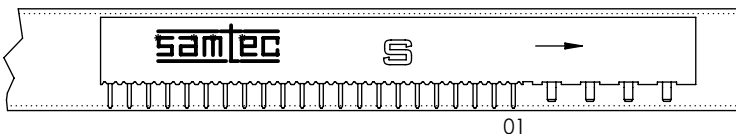


-K OPTION
(SHOWN: HPFC-122-02-X-D-4-K)

NOTE: "M" = TOTAL PART LENGTH (REF)
"P" = $\{("M" - .256 [6.50]) / 2\} \pm .020 [.51]$



TUBE: PT-1-24-01-69
PLUG: TP-09



TUBE: PT-1-24-08-15
PLUG: TP-03

PACKAGING VIEW

F:\DWG\MISC\MKTG\HPFC-1XX-XX-XX-D-XX-XX-MKT.SLDDRW

PROPRIETARY NOTE

THIS DOCUMENT CONTAINS INFORMATION CONFIDENTIAL AND PROPRIETARY TO SAMTEC, INC. AND SHALL NOT BE REPRODUCED OR TRANSFERRED TO OTHER DOCUMENTS OR DISCLOSED TO OTHERS OR USED FOR ANY PURPOSE OTHER THAN THAT WHICH IT WAS OBTAINED WITHOUT THE EXPRESSED WRITTEN CONSENT OF SAMTEC, INC.

DO NOT SCALE DRAWING

SHEET SCALE: 1:1

samtec

520 PARK EAST BLVD, NEW ALBANY, IN 47150
PHONE: 812-944-6733 FAX: 812-948-5047
e-Mail: info@SAMTEC.com code: 55322

DESCRIPTION:
.200 [5.08] POWER COMBO SOCKET ASSEMBLY

DWG. NO.
HPFC-1XX-XX-XX-D-XX-XX

BY: DEAN P 01/06/1999 SHEET 2 OF 2