

CXA-0489

Dimming/Connector Type

■ Features

- 1 output
 - Usable in a wide range of temperatures
 - Applicable panel size*: 3 to 15 inches
 - With brightness control function (Pulse Width Modulation Dimming).
 - With shut down function.
 - With a sensing function for running out of lamp (alarm output).
 - In the high-voltage generator (a terminal and a pattern), an anti-dust measure by silicone application is taken.
- (Notice) Applicable panel size becomes a standard.

■ Applications



DC-AC Inverter

CXA-0489 Specifications (Please refer to each specification before use)

Electrical Characteristics

Item	Unit	Symbol	Specification			Condition						Remarks
			min	typ	max	V _{in} (V)	V _{rmt} (V)	V _{br} (V)	R _{br} (kΩ)	T _a (°C)	R _L (kΩ)	
Output Current	mA	I _{out} (Maximum dimmer)	5.5	6	6.5	12±1.2	5	2.5	-	-30 to +75	60	Voltage dimmer (*1)
			5.5	6	6.5	12±1.2	5	-	10	-30 to +75	60	Volume dimmer (*1)
		I _{out} (Minimum dimmer)	2.5	2.9	3.5	12±1.2	5	0	-	-30 to +75	60	Voltage dimmer (*1)
			2.5	2.9	3.5	12±1.2	5	-	0	-30 to +75	60	Volume dimmer (*1)
Input Current	mA	I _{in1}	-	330	550	12±1.2	5	2.5	-	-30 to +75	60	Remote ON
	mA	I _{in2}	-	0.3	3	12±1.2	0	2.5	-	-30 to +75	60	Remote OFF
Oscillatory Frequency	kHz	Freq1	47.3	51.2	55.0	12±1.2	5	2.5	-	-30 to +75	60	
	Hz	Freq2 (Duty frequency)	241	255	269	12±1.2	5	0	-	-30 to +75	60	
Open Circuit Voltage	V _{rms}	V _{open}	1200	1600	1800	12±1.2	5	2.5	-	-30 to +75	∞	Open load
Alarm Signal	V	V _{st}	4.5	5.1	5.5	12±1.2	5	2.5	-	-30 to +75	∞	In case of lamp anomaly (*2)
			-	0	0.5	12±1.2	5	2.5	-	-30 to +75	60	On a normal operation (*2)

(*1) Please refer to the connection diagram for details of a dimming method.

(*2) Please refer to the connection diagram for details of alarm output.

Other Specifications

Dimming Function		Yes
Operating Temperature	°C	-30 to +75
Storage Temperature	°C	-30 to +85
Operating Humidity Ratio	RH%	95max.
Safety Standard		—
Weight	g	20typ.
Dimensions (WxDxH)	mm	113x25x8.5 (*3)
Fused Input		Yes
Remote ON / OFF		Yes
Alarm Signal Function		Yes
Shutdown Function		Yes
Silicone Coating on High Voltage Area		Yes

(*3) These dimensions are indicated the maximum only H. Others are typical values.

■ Conformity to RoHS Directive

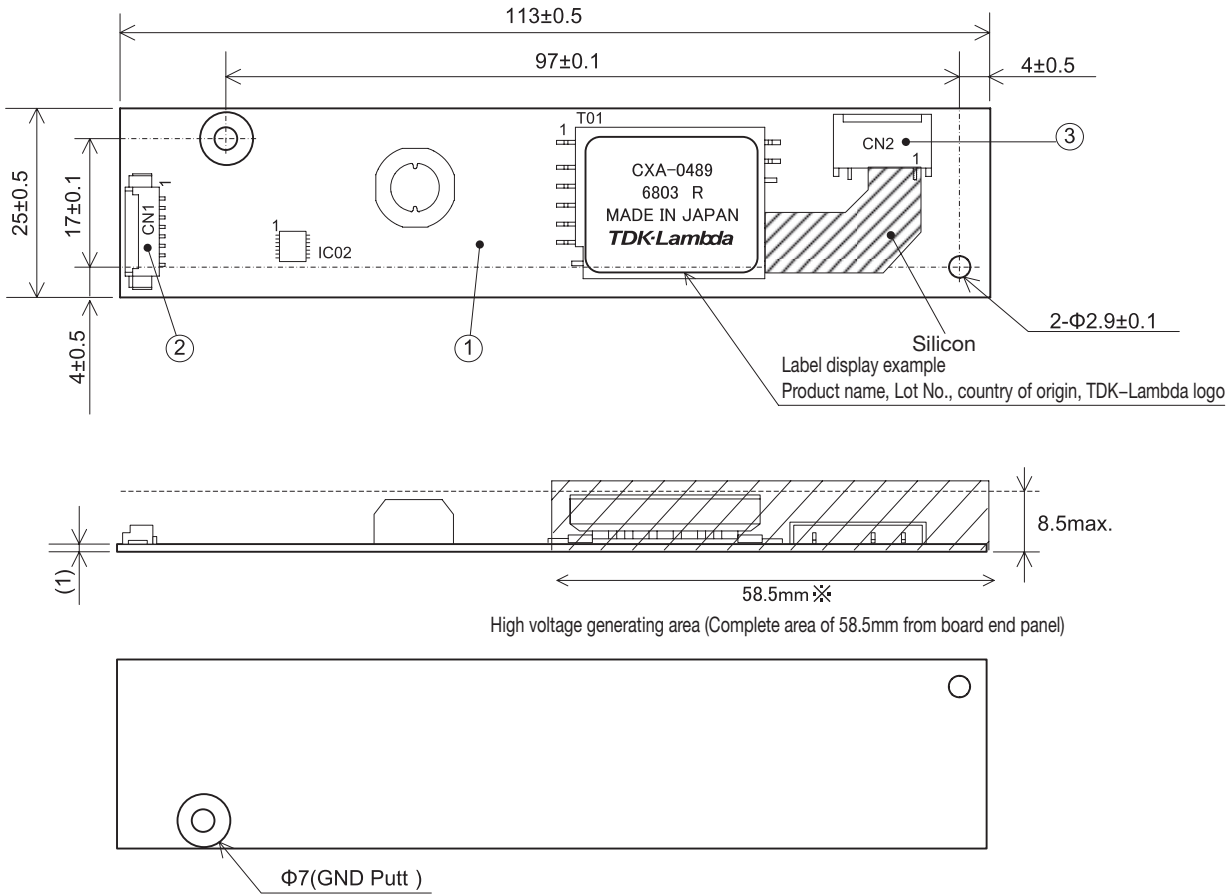
This means that, in conformity with EU Directive 2002/95/EC, lead, cadmium, mercury, hexavalent chromium, and specific bromine-based flame retardants, PBB and PBDE, have not been used, except for exempted applications.

Connector type/1 output

Outline Drawing

DC-AC Inverter

Connector type/1 output



*From high-voltage generator, please secure space distance more than 3mm in top and bottom right and left.

Unit: mm

Connector

No.	Component name	Type name	Qty	Remarks	Recommended suitable connector
①	Input connector CN1	Composite (CEM-3)	1	UL94V-0 t=1.0	-
②	Output connector CN1	53261-0871	1	Molex	51021-0800
③	Output connector CN2	SM02(8.0)B-BHS-1-TB(LF)(SN)	1	J.S.T Mfg., Co., Ltd	BHR-03VS-1

Terminal Number & Function

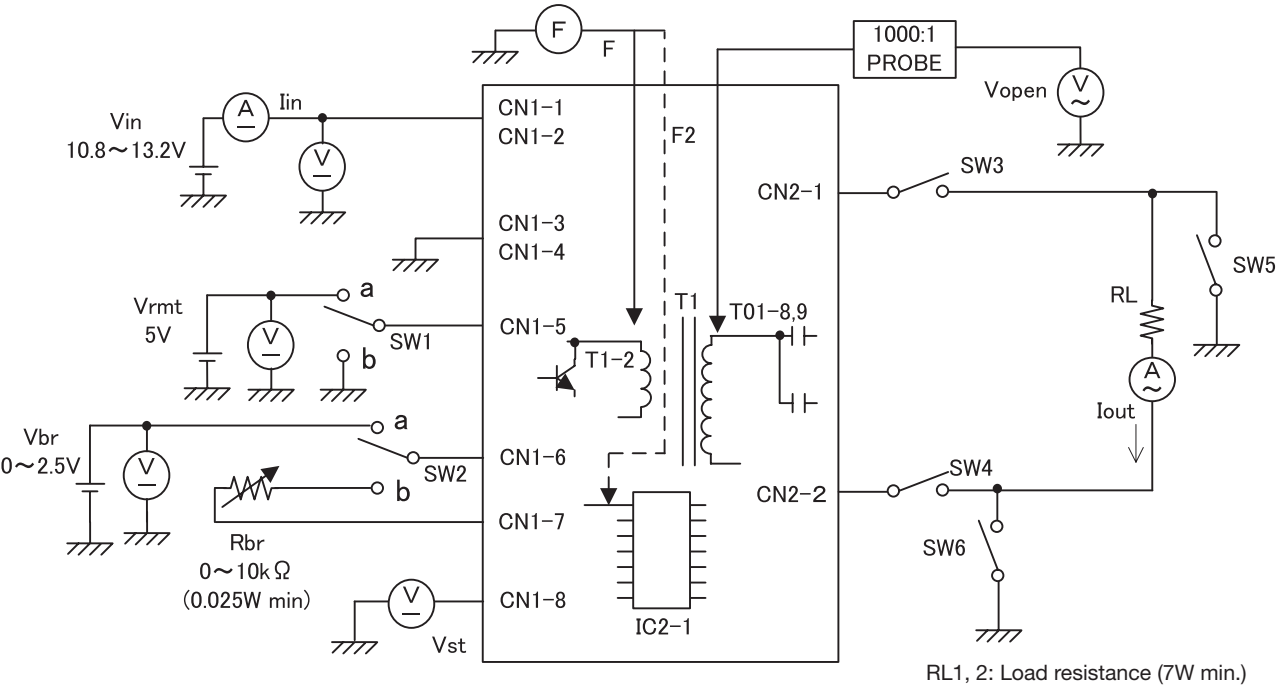
Input side CN1

Terminal No.	Symbol	Rating	Remarks
CN1-1	Vin	12±1.2V	Power source input
CN1-2			
CN1-3	GND	0V	Ground
CN1-4			
CN1-5	Vrmt	0V/2.0V to Vin	Remote terminal 0 to 0.8V : OFF 2.0V to Vin : ON Open : ON
CN1-6	Rbr1/Vbr	0 to 2.5V/0 to 10kΩ	Dimmer terminal 1
CN1-7	Rbr2	0 to 10kΩ	Dimmer terminal 2
CN1-8	Vst (output)	0V/5V	Alarm output Lamp open : 5V

Output side CN2

Terminal No.	Symbol	Rating	Remarks
CN2-1	V _{HIGH}	290Vrms	Output
CN2-2	N.C.	—	N.C.
CN2-3	V _{LOW}	(2V)	Output return

Connections



Operate as follows by switching a SW1.

SW1	Unit operates
a	Operates
b	Does not operate
Open	Operates

Operate as follows by switching a SW2.

SW2	Unit operates
a	Voltage dimmer Vbr = 0 to 2.5V (2.5V: Maximum brightness.)
b	Volume dimmer VR = 0 to 10kΩ (10Ω: Maximum brightness.)

Operates as follows depending on ON-OFF of SW3 to 6.

SW3	SW4	Unit operates	Operates alarm output
Open	Close	Does not operate	Operates (5V output)
Close	Open	Does not operate	Operates (5V output)
Close	Close	Operates	Does not operate (0V output)

SW5,6	Unit operates	Operates alarm output
Open	Operates	Does not operate (0V output)
Close	Does not operate	Operates (5V output)