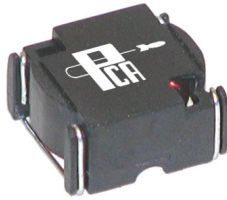


## EPI B50 Series



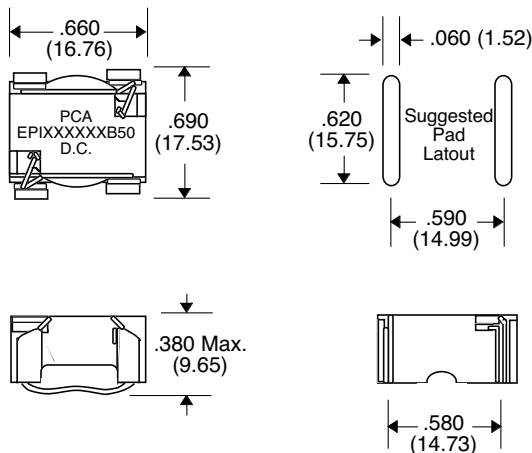
- General Purpose Power Inductors
- Low loss material ensures operation in high frequency switching converters, such as Buck, Boost or as output averaging filter inductor
- Also suitable for use in high quality filter applications
- 500 KHz & 200 KHz Switching Frequency

### Primary Specification

Part Number	Induct. ( $\mu\text{H} \pm 15\%$ ) @ 0 Adc	DCR ( $\Omega$ Typ.)	Induct. ( $\mu\text{H} 15\%$ ) @ Idc	Idc (Amps)	Vt1 (V- $\mu\text{Sec}$ ) @ 500 KHz	Vt2 (V- $\mu\text{Sec}$ ) @ 200 KHz	Temp.Rise @ Vt1 @ Vt2 °C (Typ.)	
EPI1L0113B50	1.18	.0037	1.0 $\pm 20\%$	11.0	1.4	---	35	---
EPI1L5103B50	1.9	.0047	1.5 $\pm 20\%$	10.4	1.8	---	39	---
EPI2L2942B50	2.9	.0058	2.2 $\pm 20\%$	9.4	2.2	---	39	---
EPI3L3832B50	4.0	.0069	3.3	8.3	2.6	---	37	---
EPI4L7792B50	6.1	.0085	4.7	7.9	3.2	---	40	---
EPI6L8702B50	9.6	.0106	6.8	7.0	4.0	---	40	---
EPI100552B50	16.2	.016	10	5.5	5.0	---	37	---
EPI150452B50	21.3	.026	15	4.5	6.0	---	40	---
EPI220352B50†	29.4	.037	22	3.5	7.0	---	36	---
EPI330292B50	44.3	.061	33	2.9	8.6	---	38	---
EPI470242B50	62.4	.086	47	2.4	10.2	---	38	---
EPI560202B50	73	.121	56	2.0	11.0	---	37	---
EPI600102B50	64.9	.100	60	1.0	---	19.8	---	14
EPI680152B50	81	.202	68	1.5	11.6	---	36	---
EPI101122B50	118	.300	100	1.2	13.6	---	34	---
EPI151102B50	177	.460	150	1.0	17.2	---	36	---
EPI221901B50	270	.566	220	0.9	21.2	---	36	---
EPI331801B50	418	.705	330	0.8	26.4	---	36	---
EPI471701B50	607	.850	470	0.7	31.8	---	34	---
EPI681601B50	894	1.03	680	0.6	38.6	---	31	---
EPI102501B50	1314	1.25	1000	0.5	46.	---	27	---

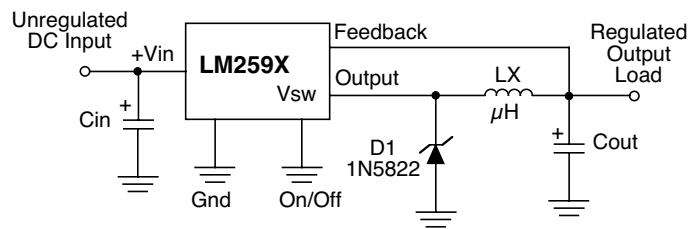
- Core Loss at Ref. Vt1 : 48 mW • Core Loss at Ref. Vt2 : 53.7 mW •
- †National Chip : LM259X-L41 •

### Package B50



Note: Coplanarity within .005" Max.

### Application



Unless Otherwise Specified Dimensions are in Inches /mm  $\pm .010 / .25$