

# Customer Information Sheet

DRAWING No.: D01-984XXXX

SHEET 2 OF 2

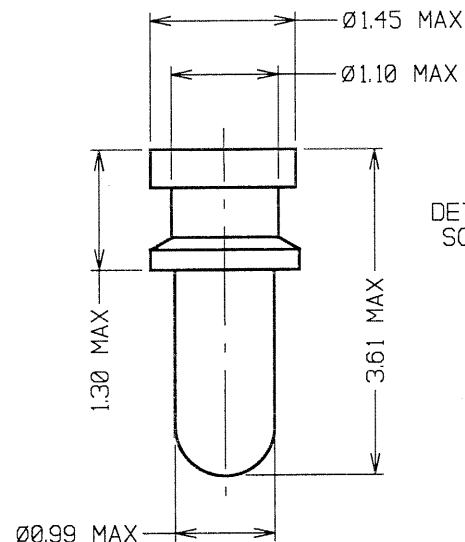
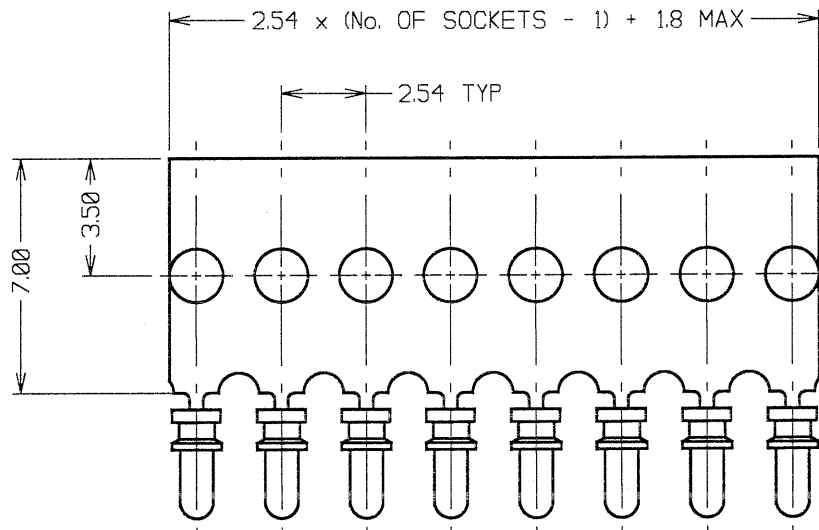
IF IN DOUBT - ASK

(C)

NOT TO SCALE

THIRD ANGLE PROJECTION

ALL DIMENSIONS IN mm



DETAILED VIEW OF  
SOCKET H3155-XX

## SPECIFICATIONS:

### MATERIAL:

CARRIER - BRASS

CONTACT SHELL - BRASS

CONTACT CLIP - BERYLLIUM COPPER

### FINISH:

Ø1 - 0.1µ GOLD CLIP, 4µ TIN SHELL

Ø5 - 0.1µ GOLD CLIP, 0.13µ GOLD SHELL

### ELECTRICAL:

CURRENT RATING - 2 AMPS MAX

CONTACT RESISTANCE - 25 MILLIOHMS MAX

### MECHANICAL:

DURABILITY - 500 CYCLES

INSERTION FORCE - 6N MAX, 2N MIN

WITHDRAWAL FORCE - 1.5N MAX, 0.5N MIN

### ENVIRONMENTAL:

OPERATING TEMPERATURE - -55°C TO +100°C

FOR COMPLETE SPECIFICATION, SEE COMPONENT  
SPECIFICATION C006XX (LATEST ISSUE)

## NOTES:

1. RECOMMENDED HOLE SIZE = Ø1.10-1.00mm.
2. MAXIMUM PIN LENGTH = 3.15mm.
3. RECOMMENDED PIN DIAMETER = Ø0.51-0.41mm.
4. MAXIMUM CONTACT DEPTH = 2.26mm.

ORDER CODE:

D01-984XXXX

NO. OF SOCKETS  
Ø4 TO 32

FINISH:

Ø1 = GOLD CLIP, TIN SHELL  
Ø5 = GOLD CLIP, GOLD SHELL

JMB	8	16.03.06	9093
NAME	ISS.	DATE	C/NOTE
APPROVED:			
CHECKED:			
DRAWN:		J. KEIR	
CUSTOMER REF.:			
ASSEMBLY DRG:			

# HARWIN

HARWIN USA  
TEL: 803 893 5376  
FAX: 803 893 5396  
mis@harwin.com

HARWIN Europe (UK)  
TEL: 023 9231 4545  
FAX: 023 9231 4590  
mis@harwin.co.uk

HARWIN Asia  
TEL: +65 6 779 4909  
FAX: +65 6 779 3868  
mis@harwin.com.sg

THIS DRAWING AND ANY  
INFORMATION OR DESCRIPTIVE  
MATTER SET OUT HEREON ARE  
CONFIDENTIAL AND COPYRIGHT  
PROPERTY OF THE HARWIN  
GROUP AND MUST NOT BE  
DISCLOSED, LOANED, COPIED  
OR USED FOR MANUFACTURING,  
TENDERING OR FOR ANY  
OTHER PURPOSE WITHOUT  
THEIR WRITTEN PERMISSION.

## TOLERANCES

X. = ±1mm  
X.X = ±0.25mm  
X.XX = ±0.10mm  
X.XXX = ±0.01mm  
ANGLES = ±5°  
UNLESS STATED

## MATERIAL:

SEE ABOVE

FINISH: SEE ABOVE

S/AREA: mm²

## TITLE:

H3155-XX SUB-MIN SOCKETS  
ON CARRIER STRIP

DRAWING NUMBER:

D01-984XXXX

SHT  
2  
OF  
2

# Mouser Electronics

Authorized Distributor

Click to View Pricing, Inventory, Delivery & Lifecycle Information:

Harwin:

D01-98404T6