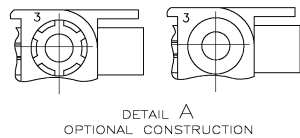
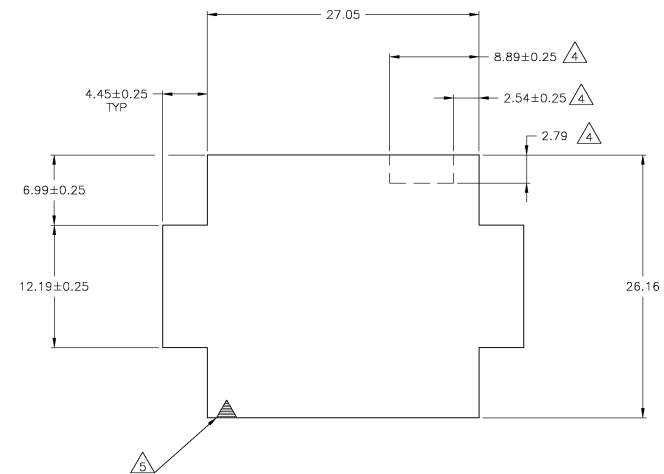
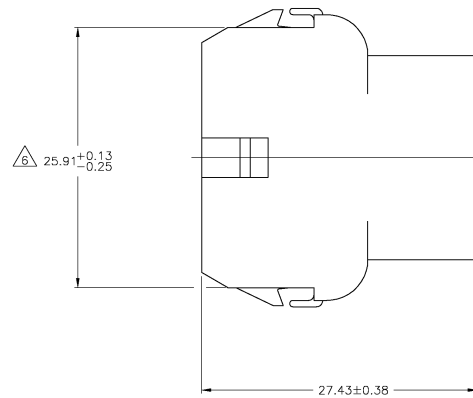


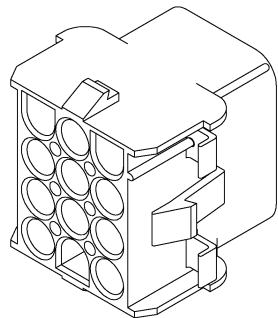
1. MATES WITH APPROPRIATE UNIVERSAL MATE-N-LOK™ PLUG.
2. RECOMMENDED PANEL THICKNESS 0.76 - 2.29
3. PANEL MUST BE PUNCHED SO THAT THE HOUSING ENTERS THE PANEL IN THE SAME DIRECTION AS THE PUNCH.
4. OPTIONAL FOR KEYING HOUSING IN PANEL.
5. CIRCUIT NUMBER 1 LOCATION.
6. DIMENSION INDICATED IS AS MOLDED. ADDITIONAL GROWTH DUE TO SUBSEQUENT MOISTURE ABSORPTION MAY OCCUR.
7. FOUR RIBS EQUALLY SPACED, NO SPECIFIC ORIENTATION. NO RIBS OR SIX RIBS EQUALLY SPACED, NO SPECIFIC ORIENTATION, OPTIONAL.
8. UNDERWRITERS RECOGNIZED COMPONENT LOGO AND CSA CERTIFICATION LOGO TO BE LOCATED ONCE EACH ON SIDE OF HOUSING.
9. MATERIAL CORRESPONDING TO THE REQUIREMENTS OF IEC 60335 (INCL. GLOW WIRE TEST 750 ° C WITHOUT FLAME)



DETAIL A
OPTIONAL CONSTRUCTION



RECOMMENDED PANEL CUT OUT



3-DIMENSIONAL MODEL
NTS

6.99	.275	27.43	1.080
4.45	.175	27.05	1.065
2.79	.110	26.67	1.050
2.54	.100	26.16	1.030
2.29	.090	25.91	1.020
0.76	.030	20.32	.800
0.38	.015	12.19	.480
0.25	.010	8.89	.350
0.13	.005	8.13	.320
MM	IN	MM	IN

CONVERSION TABLE

METRIC

THIS DRAWING IS A CONTROLLED DOCUMENT.		DW: J. SALO 29NOV2007		NATURAL		1863006-1	
DIMENSIONS: mm		CHK: J. LAZARO 29NOV2007		COLOR		PART NO.	
TOLERANCES UNLESS OTHERWISE SPECIFIED:		APVD: L. BATLLO 29NOV2007		Tyco Electronics		Tyco Electronics AMP, Espana S.A. Barcelona, Spain.	
D P.L.C. # -		PRODUCT SPEC:		CAP.12 CIRCUIT, UNIVERSAL MATE-N-LOK™			
D P.L.C. # 013		APPLICATION SPEC:					
A P.L.C. # -		MATERIAL: PA 6		SIZE: A1		CASE CODE: 00779	
FINISH: -		WEIGHT: -		DRAWING NO: 1863006		RESTRICTED TO: -	
		CUSTOMER DRAWING		SCALE: 4:1		SHEET: 1 OF 1	