

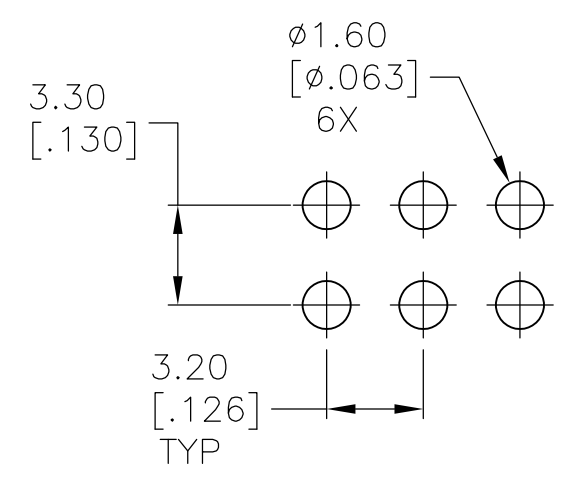
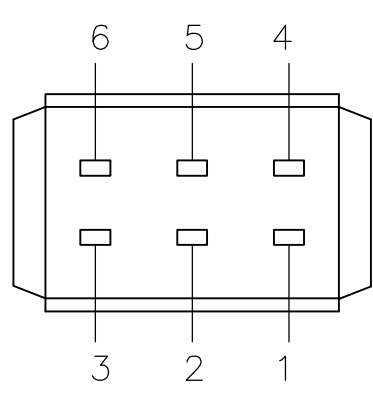
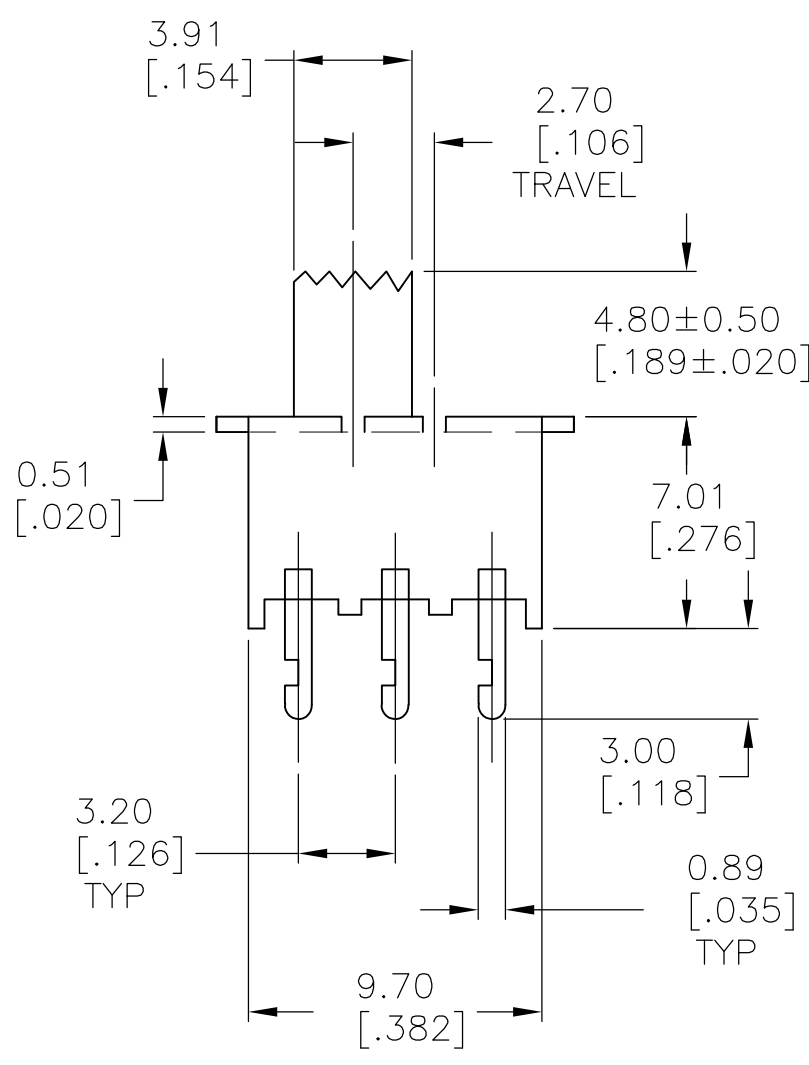
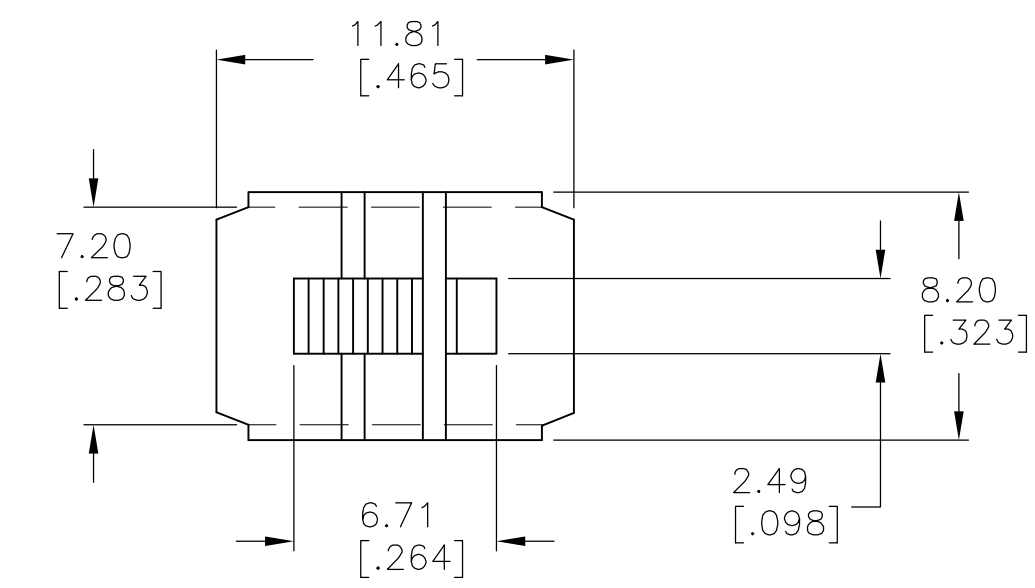
LOC	DIST	REVISIONS					
		P	LTR	DESCRIPTION	DATE	DWN	APVD
AD	00		C	ECO 07-016003	16OCT07	MB	MS

D

C

B

A



RECOMENDED HOLE LAYOUT  
TOLERANCE ±.002 UNLESS OTHERWISE NOTED

SPECIFICATIONS:  
BREAK-BEFORE-MAKE

MATERIALS:  
FRAME-STEEL, ZINC PLATE  
ACTUATOR-PBT G30, BLACK  
FIXED CONTACT/TERMINAL-COPPER ALLOY, SILVER OVER NICKEL PLATE  
MOVING CONTACT-COPPER ALLOY, SILVER OVER NICKEL PLATE  
COIL SPRING-STEEL WIRE  
LEAF SPRING-COPPER ALLOY  
TERMINAL BOARD-PHENOLIC, UL94HB

ELECTRICAL:  
CONTACT RATING- 500 MILLIAMPS@125V AC  
CONTACT RESISTANCE- 30 MILLIOHMS MAX (INITIAL), 60 MILLIOHMS AFTER TEST  
INSULATION RESISTANCE- 500 MEGOHMS MIN AT SEA LEVEL  
DIELECTRIC STRENGTH- 500 VAC RMS AT SEA LEVEL  
LIFE EXPECTANCY- 10,000 CYCLES MIN, NO LOAD & 6,000 MIN AT  
RATED CURRENT

MECHANICAL:  
ACTUATION FORCE- 350±200 GRAMS  
TRAVEL- 2.70[.106]

ENVIRONMENTAL:  
OPERATING TEMPERATURE- -20°C TO +85°C  
STORAGE TEMPERATURE- -40°C TO +100°C  
RESISTANCE TO SOLDER HEAT- 260°C FOR 10 SEC PER 109-202, CONDITION B  
SOLDERABILITY- PER EIA-364-56A, PROCEDURE 3, CONDITION B

- ALL MATERIALS AND FINISHES SHALL COMPLY WITH EU DIRECTIVE 2002/95/EC OF 27JAN2003 (ROHS)
- ALL PERFORMANCE SPECIFICATIONS WERE TESTED IN ACCORDANCE WITH JIS-C-5441 UNLESS OTHERWISE STATED.

1-2 4-5	2-3 5-6	SLS220104	1825079-1
LEFT	RIGHT	ALCO PART NUMBER	PART NUMBER
ACTUATOR POSITION			

THIS DRAWING IS A CONTROLLED DOCUMENT.		DWN BS VISWESWARA	01MAR05	Tyco Electronics Corporation Harrisburg, Pa 17105-3608			
DIMENSIONS: mm [INCHES]		CHK MS SARVER	-	NAME			
TOLERANCES UNLESS OTHERWISE SPECIFIED:		APVD -	-	SLIDE SWITCH SLS-220-1			
0 PLC ± - 1 PLC ± - 2 PLC ± 0.50[.020] 3 PLC ± - 4 PLC ± - ANGLES ± -		PRODUCT SPEC -	-	SIZE A2			
MATERIAL -		APPLICATION SPEC -	-	CAGE CODE 00779			
FINISH -		WEIGHT -	-	DRAWING NO C=1825079			
		CUSTOMER DRAWING		SCALE 4:1	SHEET 1	OF 1	REV C

1825079

A

# Mouser Electronics

Authorized Distributor

Click to View Pricing, Inventory, Delivery & Lifecycle Information:

[TE Connectivity:](#)

[SLS220104](#)