

REMARK:
1.CHARACTERISTICS:
RATED VOLTAGE: 250V
RATED CURRENT: 5AMP
CONTACT RESISTANCE: 25mohms MAX.INITIAL;40mohms MAX.AFTER.
INSULATION RESISTANCE: 5000Mohms MIN.at 500V DC
DIELECTRIC STRENGTH: 1000VRMS
OPERATING TEMPERATURE RANGE: -55℃~105℃
INSERTION/EXTRACTION FORCE PER CONTACT:5N Max./0.3N Min.
MATING/UNMATING CYCLES:50MATINGS MIN.

2.MATERIAL:
INSULATORS: GLASS-FILLED THERMOPLASTIC UL94V-0, COLOR IN BLACK.
CONTACTS: COPPER ALLOY, SELECTIVE GOLD ON CONTACT AREA,
100u" Min MATTE TIN TOP OVER SOLDER AREA,
30u" Min NICKEL UNDER PLATE.
SHELL: STEEL,100u" Min NICKEL TOP OVER,
50u" Min COPPER UNDER PLATE.
CLINCH NUT :COPPER ALLOY,100u" Min MATTE TIN PLATED.

3. PART NUMBER DESCRIPTION:

10090098-S XX 4 X LF
SERIES NO. _____
TYPE _____
S: SOCKET (FEMALE)
NUMBER OF CONTACTS _____
09: 9-PIN
15: 15-PIN
25: 25-PIN
37: 37-PIN
LF: ROHS COMPLIANT
FLANGE MOUNTING OPTION
X: UNC #4-40 CLINCHNUTS
CONTACT FINISH
4: GOLD FLASH

POS.	PART NO.	THREAD TYPE
9	10090098-S094XLF	UNC 4-40
15	10090098-S154XLF	UNC 4-40
25	10090098-S254XLF	UNC 4-40
37	10090098-S374XLF	UNC 4-40

POS.	A	B	C	D	G
09	30.81	24.99	16.33	19.28	2.74
15	39.24	33.32	24.66	27.75	2.74
25	53.04	47.04	38.38	41.30	2.77
37	69.32	63.50	54.84	57.40	2.77

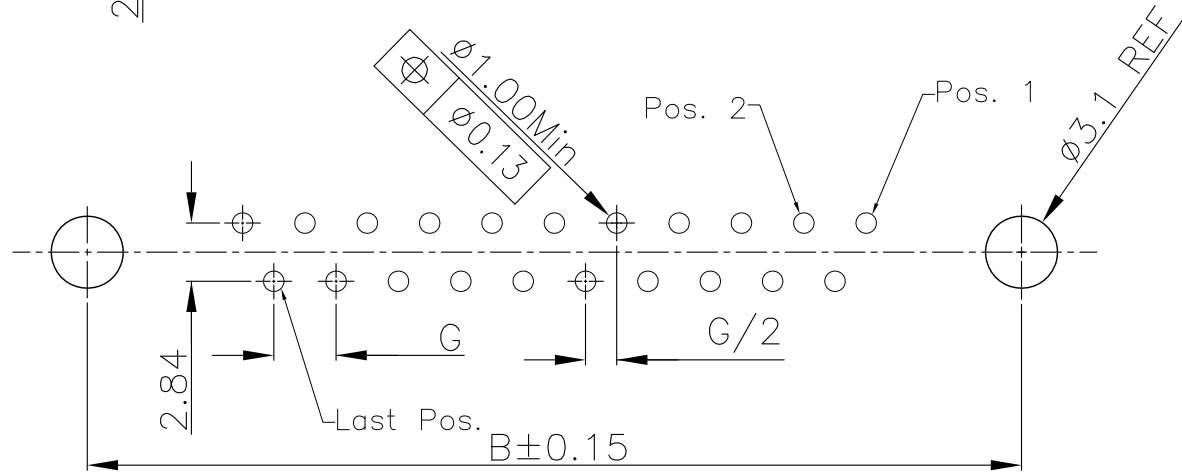
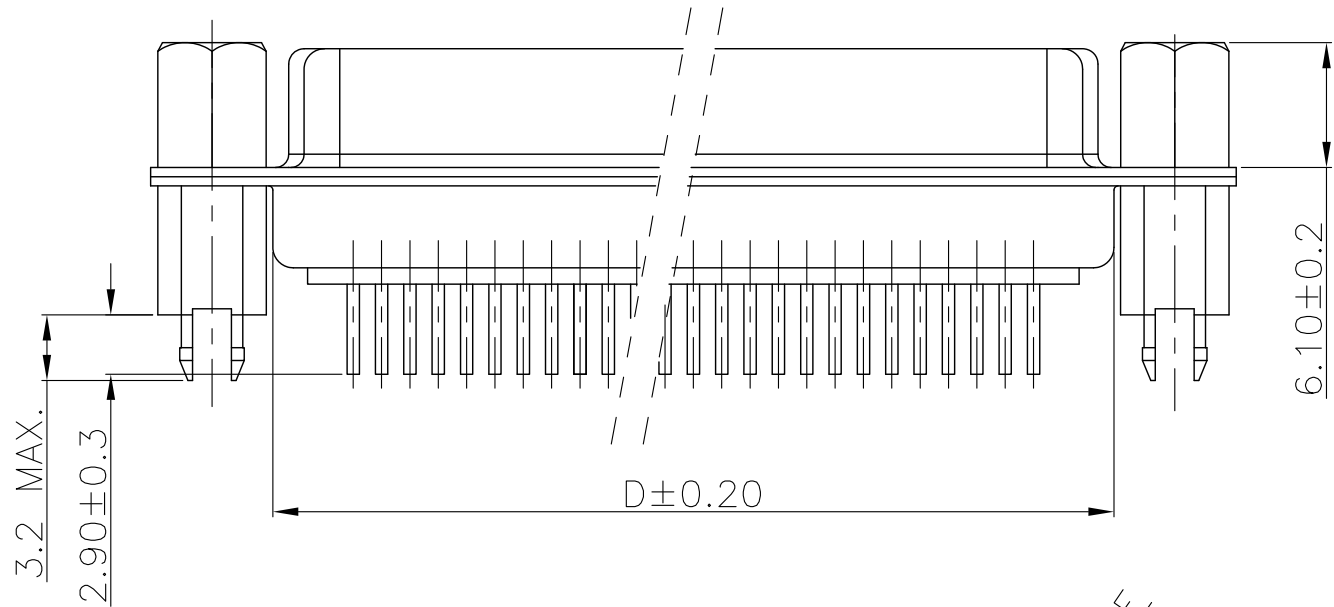
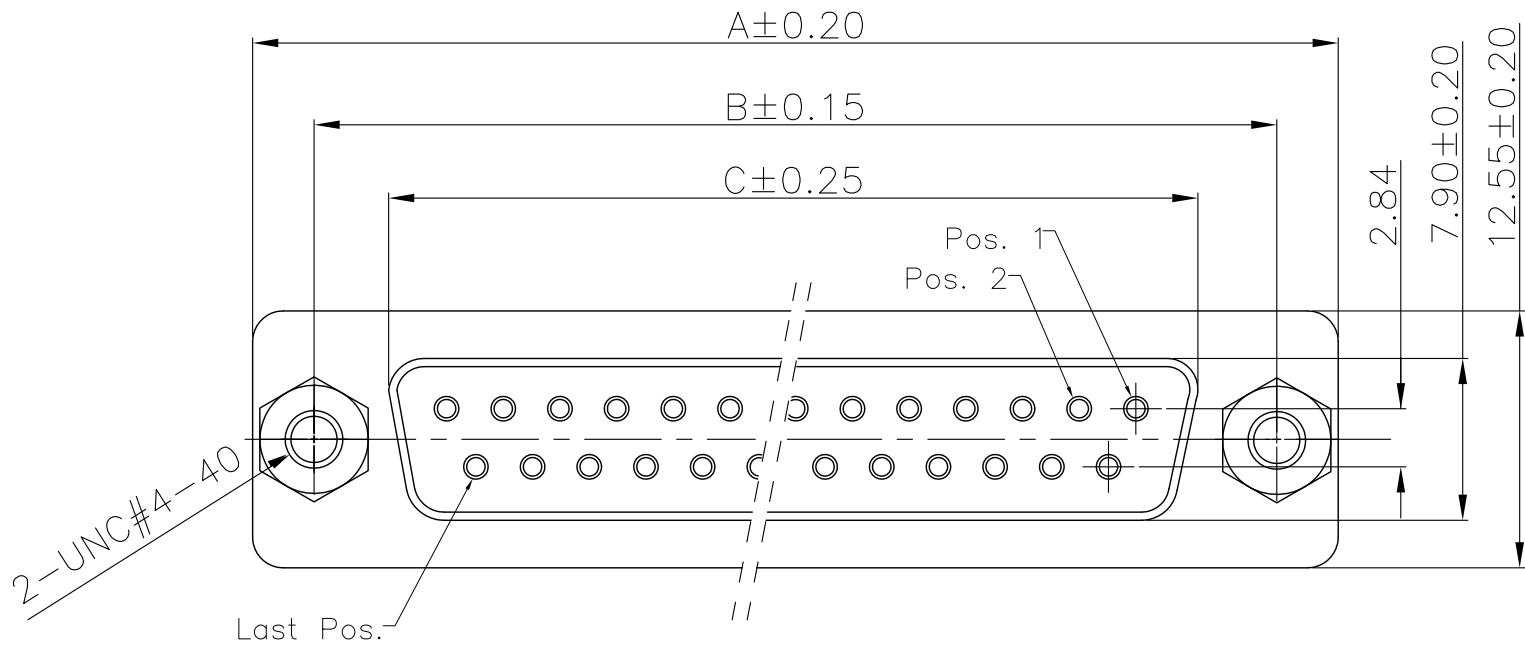
mat'l. code				tolerances unless otherwise specified				CUSTOMER COPY		<div><div>FCI</div><div>www.fciconnect.com</div></div>																																																																																																																																																																																																																																																																																																																																																																																																																																																																																																																																																																																																																																																																																																																																																																																																																																																																																																																																																																																																																																																																																																																																																																																																																		
ltr	ecn no	dr	date	linear	.X ± 0.38				projection 	title D-SUB FEMALE STRAIGHT																																																																																																																																																																																																																																																																																																																																																																																																																																																																																																																																																																																																																																																																																																																																																																																																																																																																																																																																																																																																																																																																																																																																																																																																																		
A	T09-1033	J.H	3/13/09		.XX ± 0.25																																																																																																																																																																																																																																																																																																																																																																																																																																																																																																																																																																																																																																																																																																																																																																																																																																																																																																																																																																																																																																																																																																																																																																																																																							
B	T09-1044	J.H	4/2/09		.XXX ± 0.10																																																																																																																																																																																																																																																																																																																																																																																																																																																																																																																																																																																																																																																																																																																																																																																																																																																																																																																																																																																																																																																																																																																																																																																																																							
C	ELX-I-15340	M.P	07/25/13	angles	0° ±2°					product family D-SUB size dwg no A4 10090098										code TWN																																																																																																																																																																																																																																																																																																																																																																																																																																																																																																																																																																																																																																																																																																																																																																																																																																																																																																																																																																																																																																																																																																																																																																																																								
D	ELX-I-15500	A.B	2013/08/21	dr	JASON HSU	3/12/09																																																																																																																																																																																																																																																																																																																																																																																																																																																																																																																																																																																																																																																																																																																																																																																																																																																																																																																																																																																																																																																																																																																																																																																																																						
				engr	ALIAS BABU	2013/08/21																																																																																																																																																																																																																																																																																																																																																																																																																																																																																																																																																																																																																																																																																																																																																																																																																																																																																																																																																																																																																																																																																																																																																																																																																						
				chr	MITHUN PAUL	2013/08/21		scale 1:1																						sheet 1 of 2																																																																																																																																																																																																																																																																																																																																																																																																																																																																																																																																																																																																																																																																																																																																																																																																																																																																																																																																																																																																																																																																																																																																																																																														
				appd	BIJU K PAUL	2013/08/21																																																																																																																																																																																																																																																																																																																																																																																																																																																																																																																																																																																																																																																																																																																																																																																																																																																																																																																																																																																																																																																																																																																																																																																																																						
sheet index		revision sheet		D	D																																																																																																																																																																																																																																																																																																																																																																																																																																																																																																																																																																																																																																																																																																																																																																																																																																																																																																																																																																																																																																																																																																																																																																																																																							



1 | 2

3 |

4



P.C.B LAYOUT
t: 1.6±0.1MM

1 | 2

REMARK:

1.CHARACTERISTICS:

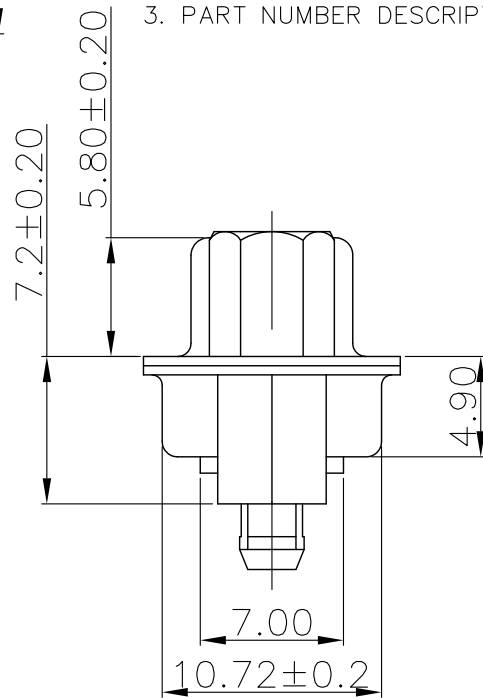
RATED VOLTAGE: 250V
RATED CURRENT: 5AMP
CONTACT RESISTANCE: 25mohms MAX.INITIAL ;40mohms MAX.AFTER.
INSULATION RESISTANCE: 5000Mohms MIN.at 500V DC
DIELECTRIC STRENGTH: 1000VRMS
OPERATING TEMPERATURE RANGE: -55℃~105℃
INSERTION/EXTRACTION FORCE PER CONTACT :5N Max./0.3N Min.
MATING/UNMATING CYCLES :50MATINGS MIN.

2.MATERIAL:

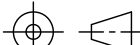
INSULATORS: GLASS-FILLED THERMOPLASTIC UL94V-0, COLOR IN BLACK.
CONTACTS: COPPER ALLOY,SELECTIVE GOLD ON CONTACT AREA,
100u" Min MATTE TIN TOP OVER SOLDER AREA,
30u" Min NICKEL UNDER PLATE.
SHELL: STEEL,100u" Min NICKEL TOP OVER,
50u" Min COPPER UNDER PLATE.
CLINCH NUT :COPPER ALLOY,100u" Min MATTE TIN PLATED.
SCREW LOCK: COPPER ALLOY, 100u" Min BRIGHT NICKEL PLATED.

3. PART NUMBER DESCRIPTION:

10090098-S XX 4 V LF
SERIES NO. TYPE NUMBER OF CONTACTS
S: SOCKET (FEMALE)
09: 9-PIN
15: 15-PIN
25: 25-PIN
37: 37-PIN
LF: ROHS COMPLIANT
FLANGE MOUNTING OPTION
V: UNC #4-40 SCREWLOCKS
CONTACT FINISH
4: FLASH GOLD



POS.	PART NO.	A	B	C	D	G
09	10090098-S094VLF	30.81	24.99	16.33	19.28	2.74
15	10090098-S154VLF	39.24	33.32	24.66	27.75	2.74
25	10090098-S254VLF	53.04	47.04	38.38	41.30	2.77
37	10090098-S374VLF	69.32	63.50	54.84	57.40	2.77

mat'l. code				tolerances unless otherwise specified				CUSTOMER COPY				<div>FCI</div> <div>www.fciconnect.com</div>																																																																																																																																																																																																																																																																																																																																																																																																																																																																																																																																																																																																																																																																																																																																																																																																																																																																																																																																																																																																																																																																																																																																																																																																				
ltr	ecn no		dr	date	linear	.X ± 0.38				projection				title D—SUB FEMALE STRAIGHT 																																																																																																																																																																																																																																																																																																																																																																																																																																																																																																																																																																																																																																																																																																																																																																																																																																																																																																																																																																																																																																																																																																																																																																																																		
D						.XX ± 0.25																																																																																																																																																																																																																																																																																																																																																																																																																																																																																																																																																																																																																																																																																																																																																																																																																																																																																																																																																																																																																																																																																																																																																																																																										
						.XXX ± 0.10																																																																																																																																																																																																																																																																																																																																																																																																																																																																																																																																																																																																																																																																																																																																																																																																																																																																																																																																																																																																																																																																																																																																																																																																										
					angles	0° ±2°																																																																																																																																																																																																																																																																																																																																																																																																																																																																																																																																																																																																																																																																																																																																																																																																																																																																																																																																																																																																																																																																																																																																																																																																										
					dr	JASON HSU		3/12/09		<div>MM</div>				product family D—SUB								code																																																																																																																																																																																																																																																																																																																																																																																																																																																																																																																																																																																																																																																																																																																																																																																																																																																																																																																																																																																																																																																																																																																																																																																										
					engr	ALIAS BABU		2013/08/21						size dwg no								TWN																																																																																																																																																																																																																																																																																																																																																																																																																																																																																																																																																																																																																																																																																																																																																																																																																																																																																																																																																																																																																																																																																																																																																																																										
					chr	MITHUN PAUL		2013/08/21		scale 1:1				A4		10090098								sheet 2 of 2																																																																																																																																																																																																																																																																																																																																																																																																																																																																																																																																																																																																																																																																																																																																																																																																																																																																																																																																																																																																																																																																																																																																																																																								
					appd	BIJU K PAUL		2013/08/21																																																																																																																																																																																																																																																																																																																																																																																																																																																																																																																																																																																																																																																																																																																																																																																																																																																																																																																																																																																																																																																																																																																																																																																																								
sheet index		revision sheet																																																																																																																																																																																																																																																																																																																																																																																																																																																																																																																																																																																																																																																																																																																																																																																																																																																																																																																																																																																																																																																																																																																																																																																																														