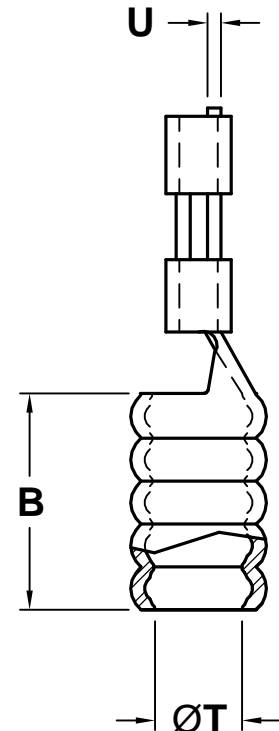
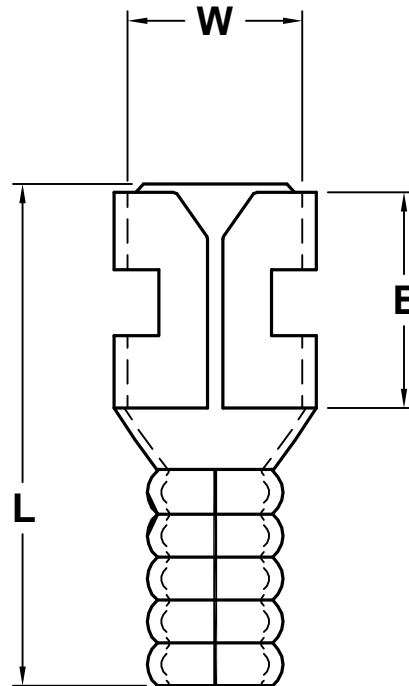
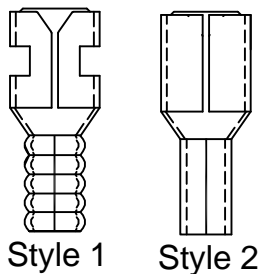


ALL RIGHTS RESERVED. NO PORTION OF THIS PUBLICATION, WHETHER IN WHOLE OR IN PART CAN BE REPRODUCED WITHOUT THE EXPRESS WRITTEN CONSENT OF SPC TECHNOLOGY.

REVISIONS				DOC. NO. SPC-F004 * Effective: 12/21/98 * DCP No: 680				
DCP #	REV	DESCRIPTION	DRAWN	DATE	CHECKD	DATE	APPRVD	DATE
	A	Redrawn in Autocad	JAP	12/3/91				
1199	B	Redrawn and Renamed	JWM	11/12/01	JC	11/19/01	JC	11/19/01

NOTES:

1. Material: Electro-tin Plated Copper
2. Voltage Rating: 600 V



LISTED



OSHA
Acceptable

PART NUMBER	WIRE RANGE (AWG)	MATES WITH MALE TAB WIDTH (W) X THICKNESS	L	B	T	E	U	Style
CFS-TO-1412	16 - 14	.110 x .020	.54	.19	.115	.25	.010	2
CFS-TO-1418	16 - 14	.187 x .020	.58	.25	.085	.25	.016	1
CFS-TO-1425	16 - 14	.250 x .032	.66	.25	.080	.30	.020	2
CFS-TO-1818	22 - 18	.187 x .020	.58	.25	.085	.25	.016	1
CFS-TO-1825	22 - 18	.250 x .032	.66	.25	.080	.30	.020	2

SPC-F004.DWG

DISCLAIMER
ALL STATEMENTS AND TECHNICAL INFORMATION CONTAINED HEREIN ARE BASED UPON INFORMATION AND/OR TESTS WE BELIEVE TO BE ACCURATE AND RELIABLE. SINCE CONDITIONS OF USE ARE BEYOND OUR CONTROL, THE USER SHALL DETERMINE THE SUITABILITY OF THE PRODUCT FOR THE INTENDED USE AND ASSUME ALL RISK AND LIABILITY WHATSOEVER IN CONNECTION THEREWITH.



SPC TECHNOLOGY

DRAWING TITLE:

Non-Insulated Butted Seam Female Disconnects

Tolerances: Unless
Otherwise Specified:
.X = ±.015
.XX = ±.010
.XXX = ±.005

DRAWN BY:

JC

DATE:

3/1/91

CHECKED BY:

JOHN COLE

DATE:

3/1/01

APPROVED BY:

John Liska

DATE:

12/6/91

SIZE DWG. NO.

A

TA-446

ELECTRONIC FILE

TA-446.dwg

REV

B

SCALE: NTS

U.O.M.: INCHES [mm]

SHEET: 1 OF 1