

## DESCRIPTION

An adjustable recessed fixture with a 3/4" trim flange suitable for wall wash and accent applications. **Utilizes 38 Watt LED head.**

For new construction applications. Insulation must be kept 3" from all sides and at least 1" above the housing.

Catalog #		Type
Project		
Comments		Date
Prepared by		

## SPECIFICATION FEATURES

### A... Housing

I.C. Rated Housing, junction box & trimless meshplate assembly are all steel construction.

**Trim** housing utilizes a removable trim sleeve to provide a 0.75" flange around the ceiling opening and to help conceal the inner hardware of the fixture from sight below the ceiling.

Housing can accommodate 0.50" to 1.25" ceiling thickness. Optional Chicago Plenum configuration available.

### B... System Protection:

Aluminum die cast construction provides exceptional thermal management to yield 70% lumen maintenance after 50,000 hours of operation.

### C... Junction Box

Junction Box is UL listed for through branch wiring, 6 #12 90° C supply conductors or 60° C for end of run. The fixture is also UL listed as 'access above ceiling not required'.

### D... Electrical

Electrical accessible through ceiling opening. J-Box located on the side wall of the housing behind removable access doors. Integral individual low voltage LED drivers on individually removable "trays" for easy maintenance. Dimmable 10 - 100% with 0-10VDC Input.

### E... LED

One (1) - 38W LED head in 15°, 25°, 40°, or Wall Wash beam. 3000K or 4000K color temp. Rectangular lamp head with locking aiming from 0° to 60°. High CRI of 85 with excellent color consistency of  $\pm 50^\circ\text{K}$  color temperature.

### F... Mounting

Butterfly Brackets accept 1/2" EMT, C Channel, Tbar fasteners, and bar hangers. Four tabs on housing for securing to structure.

### G... Labels

cULus listed for non-type IC applications, suitable for use in damp locations.

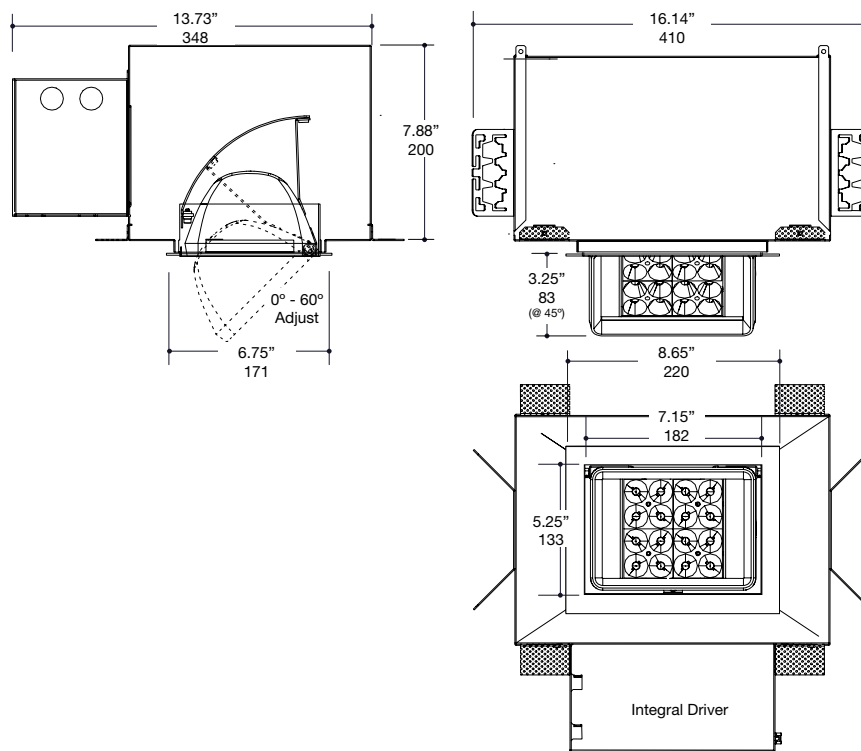
Ceiling Cut-Out:

C1 = 7.80" x 5.90"

## COMBOLIGHT® Next Generation Recessed Wall Wash Fixture

1 Light  
38W LED

New Construction  
w/ 0.75" Trim Flange



**DIMMABLE**

## ORDERING INFORMATION



C1				LRG	E		T		
<b>Configuration</b> C1 = One (1) Light		<b>Beam Distribution</b> N = 15° Narrow Beam M = 25° Medium Beam W = 40° Wide Beam A = Asymmetric Wall Wash		<b>LED Head</b> LRG = Large 38W		<b>Power Supply Voltage</b> 1 = 120V 2 = 277V 4 = 240V		<b>Interior Finish</b> W = White B = Black S = Industrial Silver	
	<b>Housing</b> N = New Construction C = Chicago Plenum		<b>Color Temp</b> 30 = 3000K 40 = 4000K		<b>Power Supply</b> E = LED Driver		<b>Trim Insert</b> T = Trim		<b>Trim Insert Finish</b> W = White B = Black S = Industrial Silver