

CATALOG LISTING  
**602EN536-1**  
PAGE 1 OF 1

ISSUE  
**12**

REVISIONS

A	PR 13038	30 MAY 84
B	CO57370	15 MAY 85
C	CO59852	18 JULY 86
D	CO67726	26 JUN 90
E	CO93910	16 DEC 98
F	CO94436	19 MAR 99
G	204373	13 NOV 01
H	0015091	

RASTER  
FO-52851-B  
DRAWN

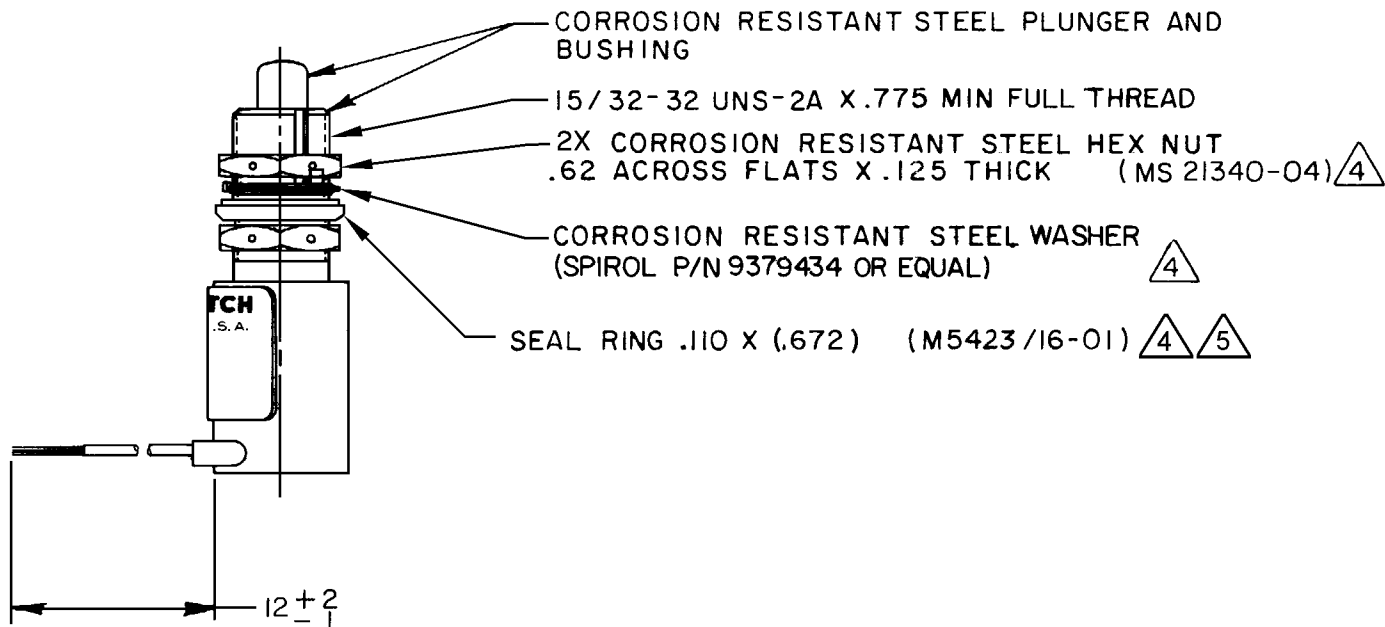
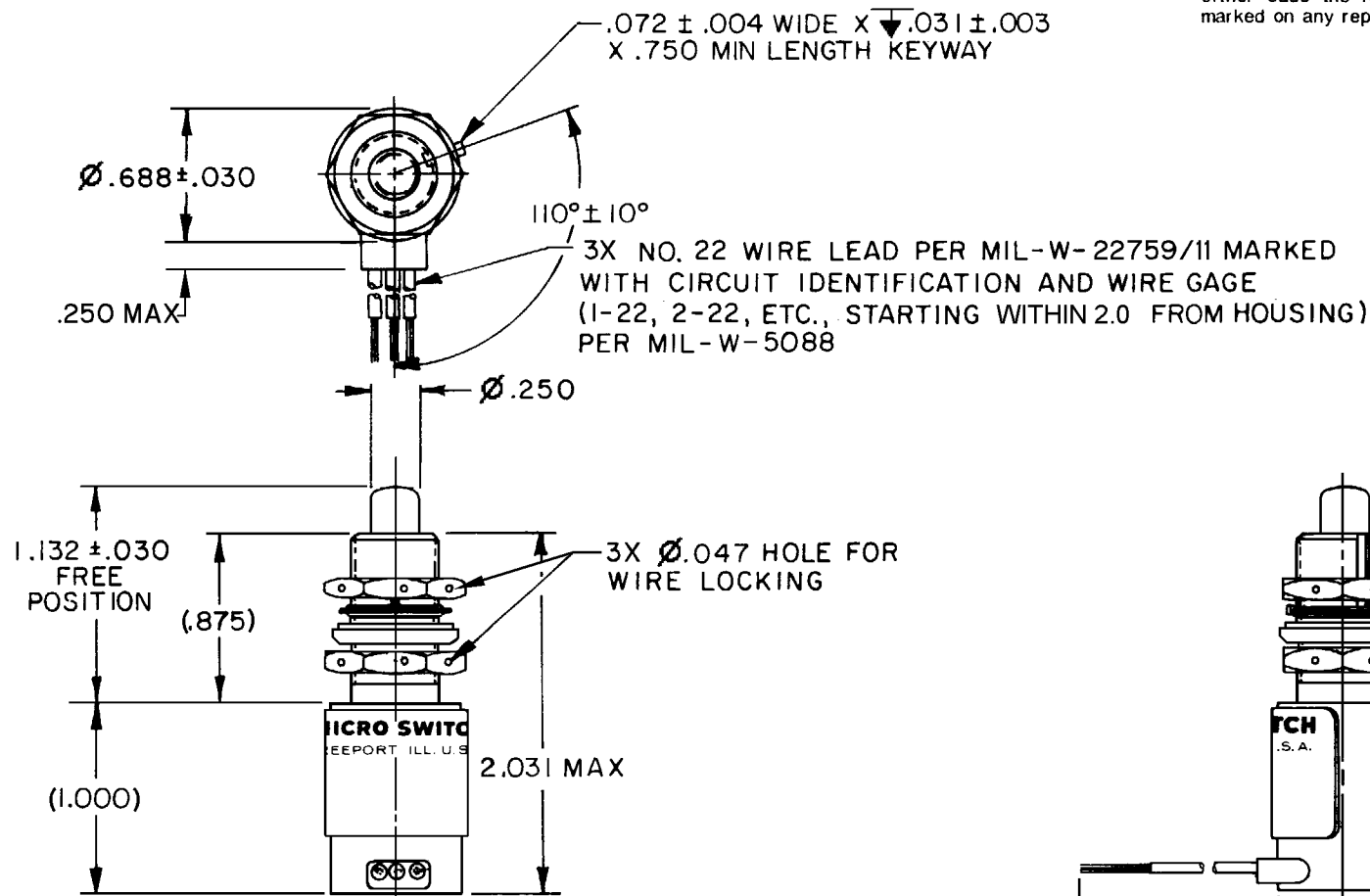
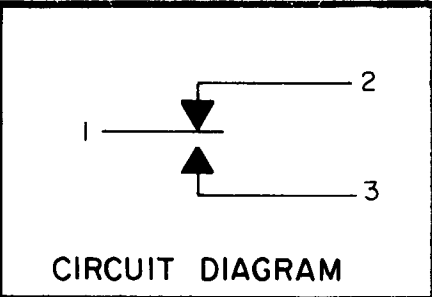
WJM 30 MAY 84

**MICRO SWITCH**  
FREEPORT, ILLINOIS, U.S.A.  
A DIVISION OF HONEYWELL  
FED. MFG. CODE 91929

**SWITCH-ENCLOSED**

CATALOG LISTING  
**602EN536-1**  
CUSTOMER PART NO.  
**19207-12292794-2**

Furnished under United States Government Contract No. \_\_\_\_\_  
Shall not be either released outside the Government, or used, duplicated or disclosed in whole or in part for manufacture or procurement, without the written permission of MICRO SWITCH, A Division of Honeywell, except for: (I) emergency repair or overhaul work by or for the Government, where the item or process concerned is not otherwise reasonably available to enable timely performance of the work; or (II) release to a foreign government, as the interests of the United States may require; provided that in either case the release, use, duplication or disclosure hereof shall be marked on any reproduction hereof in whole or in part.



ANSI Y14.5M-1982 APPLIES

CHARACTERISTICS		ELECTRICAL DATA	
OPERATING FORCE ----- 3-6 LB		CONTACT ARRANGEMENT	
FULL OVERTRAVEL FORCE ----- 17 LB MAX		S P D T	
RELEASE FORCE ----- 2 LB MIN		28 VDC	
PRETRAVEL ----- .040 MAX		LOAD	SEA LEVEL 50,000 FT
DIFFERENTIAL TRAVEL ----- .020 MAX		RES	7 7
OVERTRAVEL ----- .125 MIN		IND	4 2.5
		MOTOR	4
		LAMP	

SCALE FULL	
DO NOT SCALE PRINT	
TOLERANCES	
APPLY TO DESIGN UNITS. CONVERSIONS ARE ONLY FOR REFERENCE. UNLESS NOTED, TOLERANCES ARE IN:	
DIM. mm	TOL. mm/in
NO PLACES	X 1/04
ONE PLACE	X X 0.47/016
TWO PLACES	X XX 0.157/006
THREE PLACES	X XXX 0.387/015
ANGLES	X XXX 0.157/005
DESIGN UNITS	<input type="checkbox"/> METRIC <input checked="" type="checkbox"/> US CUSTOMARY
THIRD ANGLE PROJECTION	
WEIGHT 2.9 OZ MAX	

NOTES

- 1 - CORROSION RESISTANT STEEL ENCLOSURE
  - 2 - SWITCH SEALED PER MIL-PRF-8805 SYMBOL 4
  - 3 - CIRCUIT DIAGRAM, CUSTOMER PART NO., REVISION LETTER AND CATALOG LISTING ARE SHOWN ON NAMEPLATE
- 4 HARDWARE MAY BE PACKAGED UNASSEMBLED PER MIL-PRF-8805
- 5 FOR BEST RESULTS, IT IS RECOMMENDED THAT THE SEAL BE ASSEMBLED ON THE WIRE SIDE OF THE MOUNTING PANEL WITH THE ELASTOMER PORTION IN CONTACT WITH THE PANEL

# Mouser Electronics

Authorized Distributor

Click to View Pricing, Inventory, Delivery & Lifecycle Information:

[Honeywell:](#)

[602EN536-1](#)