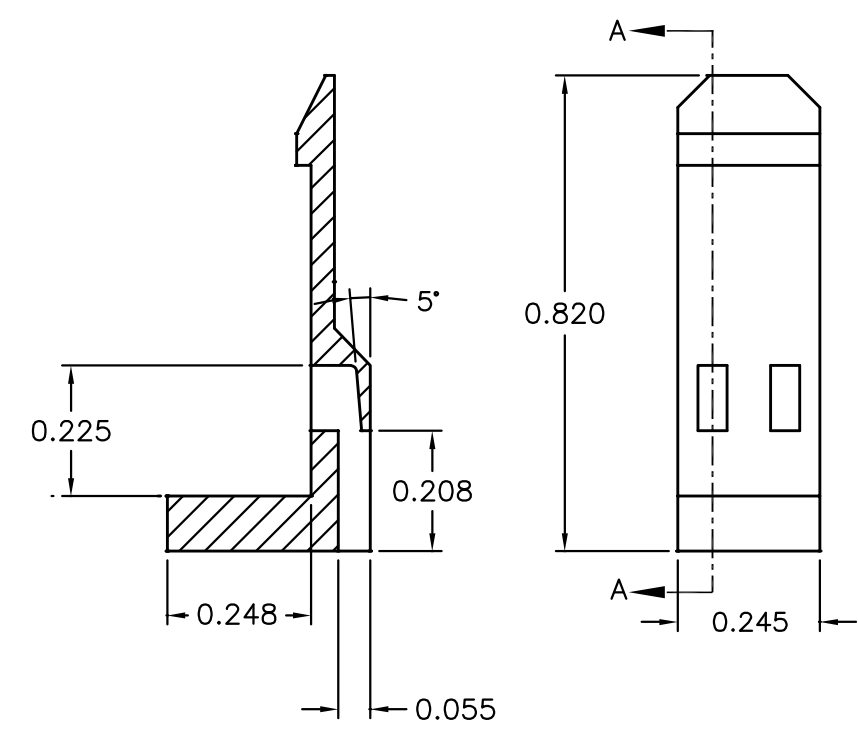


A
FCI

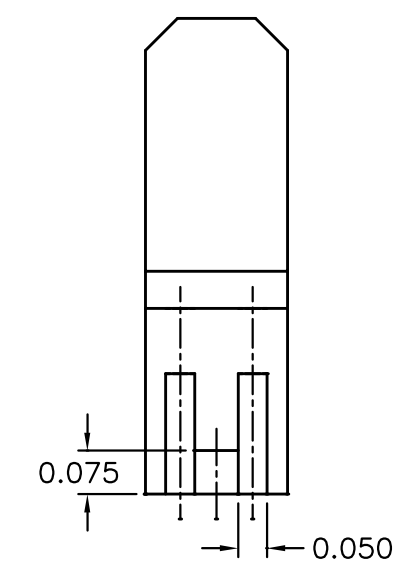
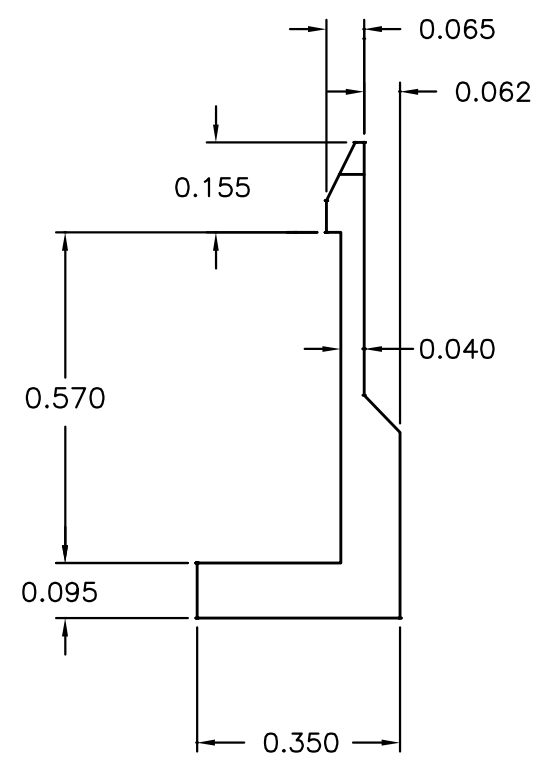
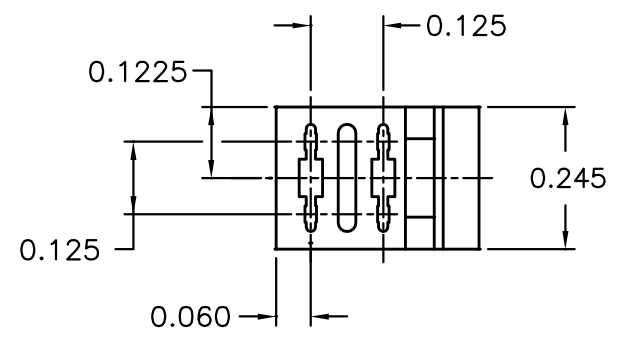
All rights strictly reserved. Reproduction or issue to third parties in any form whatever is not permitted without written authority from the proprietor. Property of FCI. Copyright FCI.

Tous droits strictement reserves. Reproduction ou communication a des tiers interdite sous quelque forme que ce soit sans autorisation ecrite du proprietaire. Propriete de c FCI. Droits de reproduction FCI.

PRODUCT NO.
13-C

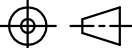



SECTION A-A



NOTES:

- ① MATERIAL: NYLON 6-12, 30% GLASS FILLED, FLAME RETARDANT UL 94-V0
2. INSERTION FORCE: 17 lbs. TYPICAL
RETENTION FORCE: 12 lbs. TYPICAL
3. FOR USE WITH 0.025" SQUARE PINS
4. FOR USE WITH: 963P, 963T CONNECTORS AND 982 PADDLE BOARDS WITH PCB CUTOUT
5. INSERTION/REMOVAL TOOL: 1006A

mat'l. code NOTE 1				tolerances unless otherwise specified				CUSTOMER COPY		<div><div><div>A</div><div>FCI</div></div><div>www.fciconnect.com</div></div>																																																																																																																																																																																																																																																																																																																																																																																																																																																																																																																																																																																																																																																																																																																																																																																																																																																																																																																																																																																																																																																																																																																																																																																																																																														
ltr	ecn no	dr	date	linear	.XX ±.01				projection 	title 13C RETAINER																																																																																																																																																																																																																																																																																																																																																																																																																																																																																																																																																																																																																																																																																																																																																																																																																																																																																																																																																																																																																																																																																																																																																																																																																																														
A	V12864	CGD	1/18/02		.XXX ±.003																																																																																																																																																																																																																																																																																																																																																																																																																																																																																																																																																																																																																																																																																																																																																																																																																																																																																																																																																																																																																																																																																																																																																																																																																																																			
B	V03-1026	PJ	10/28/03		.XXXX ±.0020																																																																																																																																																																																																																																																																																																																																																																																																																																																																																																																																																																																																																																																																																																																																																																																																																																																																																																																																																																																																																																																																																																																																																																																																																																																			
				angles	0° ±2°				<div>INCH</div> 	product family FASTECH																																																																																																																																																																																																																																																																																																																																																																																																																																																																																																																																																																																																																																																																																																																																																																																																																																																																																																																																																																																																																																																																																																																																																																																																																																														
				dr	C.DAILY	1/18/02		code 213																																																																																																																																																																																																																																																																																																																																																																																																																																																																																																																																																																																																																																																																																																																																																																																																																																																																																																																																																																																																																																																																																																																																																																																																																																																
				enrg	R.CONRAD	1/18/02																																																																																																																																																																																																																																																																																																																																																																																																																																																																																																																																																																																																																																																																																																																																																																																																																																																																																																																																																																																																																																																																																																																																																																																																																																																		
				chr	R.CONRAD	1/18/02																																																																																																																																																																																																																																																																																																																																																																																																																																																																																																																																																																																																																																																																																																																																																																																																																																																																																																																																																																																																																																																																																																																																																																																																																																																		
				appd	R.CONRAD	1/18/02																																																																																																																																																																																																																																																																																																																																																																																																																																																																																																																																																																																																																																																																																																																																																																																																																																																																																																																																																																																																																																																																																																																																																																																																																																																		
sheet index		revision sheet		B	1																																																																																																																																																																																																																																																																																																																																																																																																																																																																																																																																																																																																																																																																																																																																																																																																																																																																																																																																																																																																																																																																																																																																																																																																																																																			</

cage code
22526

ACAD