

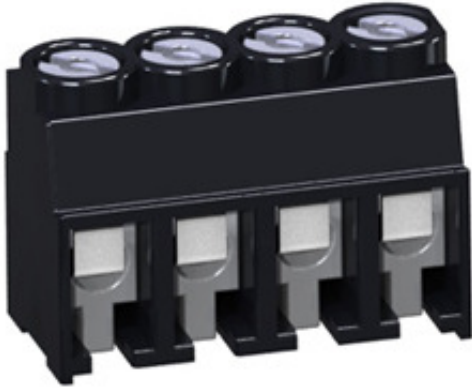
Surface Mount Terminal Blocks

TYPE 930-D-SMD (-DS)

3.5 mm spacing - 2 to 12 poles



Distributor Stock Check



RoHS WEEE Pb free surface compliant

Description

The floating terminal contacts ensure total co-planar adaptability to the surface of the PCB. This eliminates any problems related to irregularities of PCB surface. The 930-D-SMD (-DS) product is designed for re-flow process. It is supplied with a pick disc and sent out in tape and reel packaging.

- Floating Terminal Body
- Wire entrance parallel to PC Board

Technical Data

Center to Center Spacing: 3.5 mm (0.138 in.)

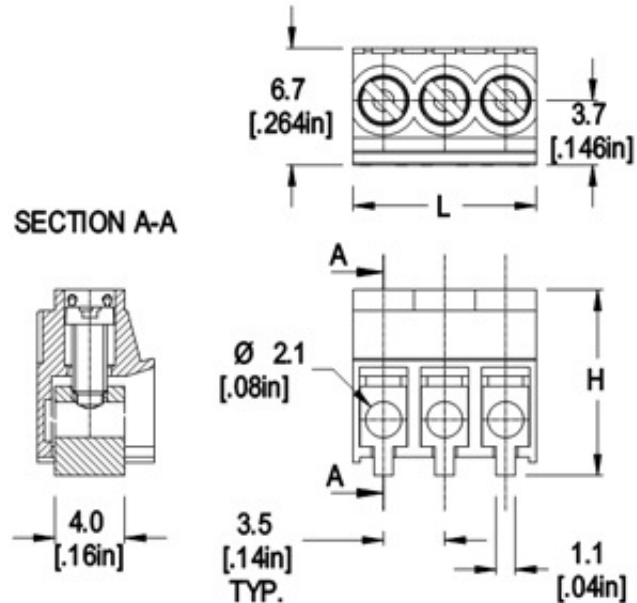
Nominal Cross Section: 1 mm² (1550 mils²)

Wire Stripping Length: 5 mm (0.197 in.)

Application

You can now convert one more component on your board to a genuine surface mount. You can increase packaging and component density, use both sides of the PCB, reduce and eliminate set-up costs and simplify and streamline your processes. This terminal block features an integrated pick area that allows this product to be picked-and-placed without any additional changes to your process. Its floating terminal bodies compensate for irregularities (non planarity and bumps) on the printed circuit board and thus promote high first pass yields and a low rate of open circuits. The same feature eliminates CTE mismatch with the PCB and thus promotes excellent in field reliability and the successful passing of

weco.ca/1_0/1_1/1_1_1_print.asp?type=...



Dimensions: mm (in.)

Length of Connector (L)

L = No. of Poles x Center to Center Spacing + 0.3 mm
(A) Center

Stencil Thickness: 0.15 mm (0.006 in.)

Heat Deflection Temp of molding: 280°C

When locating connector, allow 0.5 mm clearance around it for process-induced variations.

Approval Information

UL File No.E69841

CSA File No.LR24322

Rating	Current(A)	Voltage(V)	Application group	AWG
UL	10	150	B	26-16
CSA	10	150	B	26-16

Screw Tightening Torque:

UL: 0.2 lbfin

CSA: 2.0 Nm

Rated Impulse Withstand Voltage: 2500 V

Material

Molding: PA6T66 Polyamide, self extinguishing UL 94, V-0, color black

Temperature limits:

Short Time: 280°C (536°F)

Continuous: RTI 110°C (230°F)

Low Limit: -40°C (-40°F)

Comparative Tracking Index: CTI > 600

11/17/2009
thermal cycling testing.

WECO - Manufacturer of top caliber / st...
Oxygen Index Rating: >35%

Average weight per pole: 0.5 gram per pole,
Screw: M2, Slotted head, Tin plated copper alloy
Terminal Body: Tin plated copper alloy
Wire Protector: Nickel silver

Item **930-D-SMD (-DS)**

- Options**
- ☐ CN: Consecutive Numbering (hot stamped numbers)
 - ☐ SM: Special Marking (please provide sketch)
 - ☐ G05: Gold Plating (5 micro inches)
 - ☐ G30: Gold Plating (30 micro inches)
 - ☐ S30: Silver Plating (30 micro inches)
 - ☐ TR: Tape and Reel Assembly
 - ☐ PCP: Removable Pick Cap

Note: Plated component: terminal body

Ordering Note: See download PDF for complete tape and reel assembly specifications

Accessories

	WIRE PROTECTOR:		POLES:
	with: - DS		2 to 12
930-D-SMD	<input type="text"/>	/	<input type="text"/>

