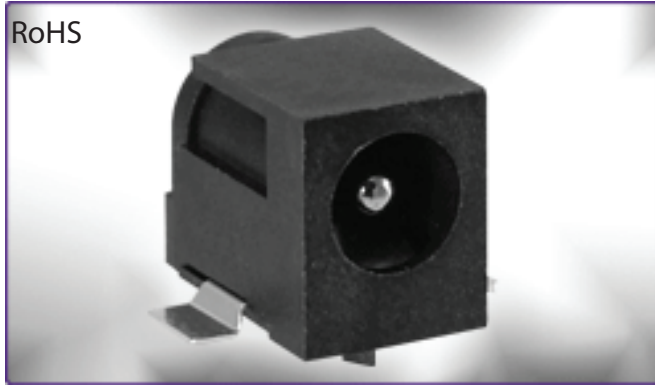




LEADERSHIP in
Connector Design

KYCON

RoHS



KLDX-SMT3 Series Surface Mount DC Power Jack

Features

- 2.0mm and 2.5mm
- Built in DC On/Off Switch
- Laptop and Palm Computers, Portable Modems, Radar Detectors, and Other Portable Device Applications
- Surface Mount



Performance Specifications

Materials and Finish

Housing: High Temperature Thermoplastic,
UL 94V-0 Rated, Black Color

Contact Materials

Center Pin: Copper Alloy, Nickel Plated

Contact #1: Brass, Silver Plated

Contact #2: Phosphor Bronze, Silver Plated

Contact #3: Brass, Silver Plated

Electrical Characteristics

Rated Current: 3.5 Amps

Rated Voltage: 24V DC

Insulation Resistance: 50 Megohms Min. at 500V DC

Contact Resistance: 30 milliohms Max.

Mechanical Characteristics

Insertion Force: 0.3kg - 2.0kg

Withdrawal Force: 0.3kg - 2.0kg

Durability: 5000 Mating Cycles Min.

Operating Temperature: -25°C to +85°C

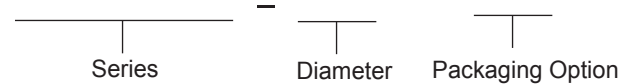
DC POWER CONNECTORS

KLDX-SMT3 Series

Documentation & Ordering Information

Kycon Part

Part Number Builder



Series

KLDX-SMT3-0202 - Surface Mount DC Power Jack

Diameter

A - 2.0mm Center Pin Diameter

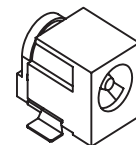
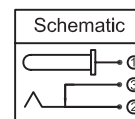
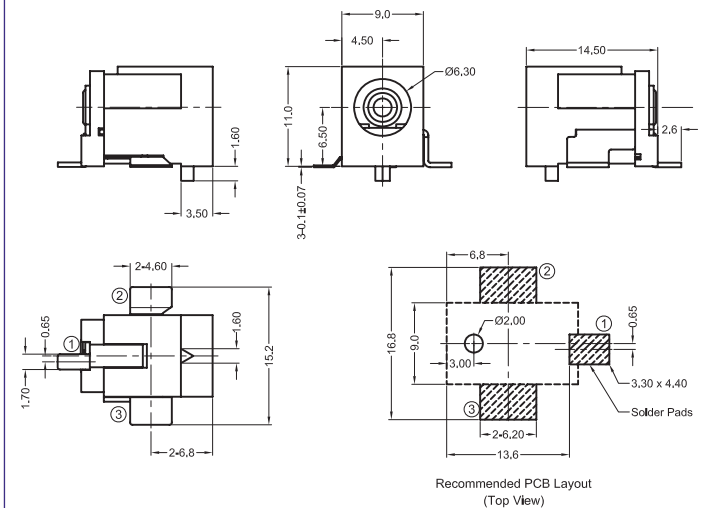
B - 2.5mm Center Pin Diameter

Packaging Option

TR - Tape and Reel

KLDX-SMT3 Series Dimensions

Dimensions in mm



Mouser Electronics

Authorized Distributor

Click to View Pricing, Inventory, Delivery & Lifecycle Information:

[Kycon:](#)

[KLDX-SMT3-0202-ATR](#) [KLDX-SMT3-0202-BTR](#)