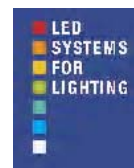


Optics for DRAGON Modules

OP1x1



Benefits

- Accessory optics for light collimation
- High optical efficiency
- Suitable for all LED colors
- Available for 3 different viewing angles

Applications

- Usage with LED OSRAM GoldenDRAGON®
- Optimized for modules DRAGONtape® and LINEARlight DRAGON

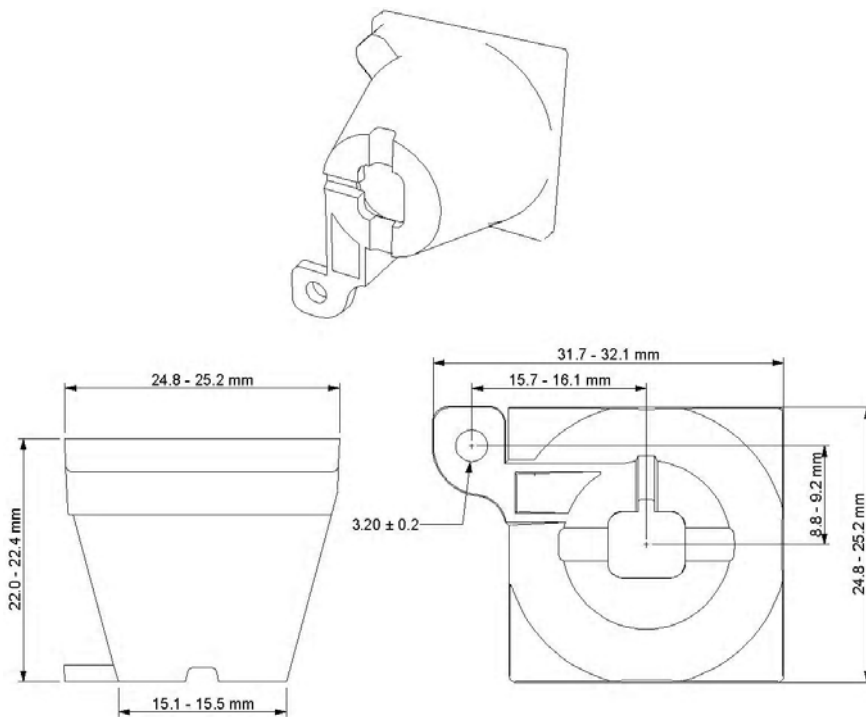
Technical Operating Data

| Product | | White | Amber | Yellow | True Green | Blue |
|-------------|----------------------|----------|----------|----------|------------|----------|
| OP1x1-30 | Radiation Angle FWHM | 29° | 29° | 29° | 29° | 29° |
| | in Axis Efficiency | 3 cd/lm | 3 cd/lm | 3 cd/lm | 3 cd/lm | 3 cd/lm |
| OP1x1-14x22 | Radiation Angle FWHM | 10 x 20° | 10 x 20° | 10 x 20° | 10 x 20° | 10 x 20° |
| | in Axis Efficiency | 9 cd/lm | 9 cd/lm | 9 cd/lm | 9 cd/lm | 9 cd/lm |
| OP1x1-10 | Radiation Angle FWHM | 5° | 5° | 5° | 5° | 5° |
| | in Axis Efficiency | 42 cd/lm | 42 cd/lm | 42 cd/lm | 42 cd/lm | 42 cd/lm |

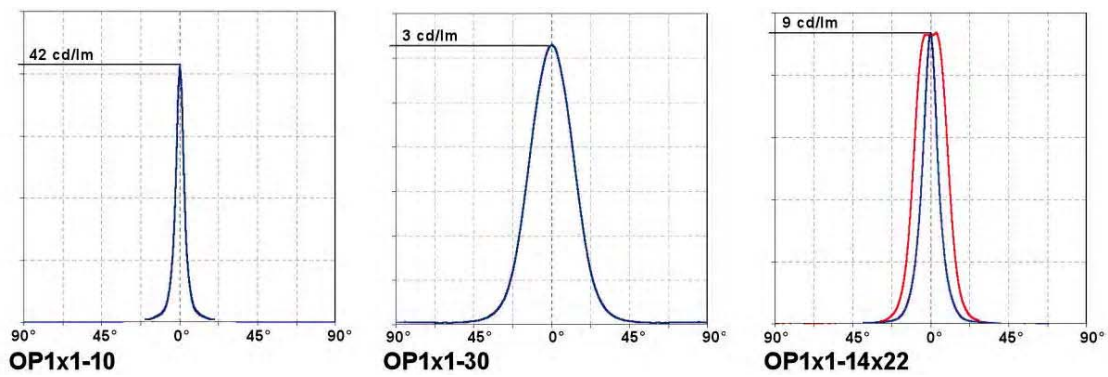
Technical Features

- Easy positioning of lens on LED
- Dimension of lens matches smallest unit of the DRAGONtape®
- Reliable fixing of lens with M3 screw - mounting hole Ø: 3.2 mm
- Dimensions (L x W x H):
25 mm x 25 mm x 22 mm
- OP1x1-10 for spot light
- OP1x1-30 for wide flood light
- OP1x1-14x22 for wallwashing
- Flammability according to UL94: V0/3.0
- Transmission: 88%
- Material lensholder: Polycarbonat; Material lense: Lexan 923A

Drawing



Light Distribution Curve



Safety Information

- The LED modules are even with the mounted optics OP1x1 not protected against humidity or dust. The lighting fixture has to be designed to fulfil the required protection.
- Mechanical stress of the lens on the LED must be avoided.

Assembly Information

- The OP1x1 is mounted with a M3 flat headed screw. Take care to not damage the lensholder.
- To achieve a optimum beam pattern you should take care to position the lens as precise as possible. Canting or torsion should be avoided.
- Is the OP1x1 not to be mounted on a DRAGONtape® or LINEARlight-DRAGON, we suggest to use a shim to equalize the different levels of PCB and mounting surface, to avoid a canting of the lens.

Ordering Guide

| Productgroup | Productname | EAN * | S-Unit * |
|---------------------------|-------------|---------------|----------|
| Optics for DRAGON Modules | OP1x1-30 | 4008321909770 | 150 |
| Optics for DRAGON Modules | OP1x1-14x22 | 4008321909787 | 150 |
| Optics for DRAGON Modules | OP1x1-10 | 4008321909893 | 150 |

*) EAN: Ordering number per single module
S-Unit: Modules per shipping unit

Sales and Technical Support

OSRAM GmbH

Hellabrunner Strasse 1
D - 81536 München
Germany
www.osram.com
+49 (0)89 6213-0

Sales and technical support is given by the local OSRAM subsidiaries.
On our world wide homepage all OSRAM subsidiaries are listed with complete address and phone numbers.

Related and Further Information

- New creativity in lighting design
LED Modules for illuminated signs
138 W002 GB
- The new dimension of light
153 S006 GB
- OPTOTRONIC® Technical Guide
130 T008 GB
- OPTOTRONIC® Data Sheets
<http://catalog.myosram.com>
- Webpages LED Systems
www.osram.com/led-systems
- OPTOTRONIC® Technical Guide - Download:
Electronic Control Gear - Handbook OPTOTRONIC®
www.osram.com/ecg-downloads
- Eulumdat Files
www.osram.com/led-systems-downloads