

mat'l. code				surface		tolerance		projection		product family			
-				ISO 1302		ISO 406 ISO 1101				MOD JACK			
ltr	ecn no	dr	date	tolerances unless otherwise specified						title			
A	V91919	BKB	9/13/99	angles linear		.X±.3/.01		MM/INCH		NET JACK II, RJ45 SMT ASSEMBLY NO PEG			
B	V92061	LP	10/20/99			.XX±.13/.005							
C	V12718	LP	1/22/02			.XXX±.051/.0020							
D	M06-0224	ERE	06/12/06	dr	B. BAHN	8/3/99				dwg no			
				enrg	B. BRUBAKER	8/3/99				sheet 1 of 4			
				chr	B. BRUBAKER	8/3/99				size			
				appd	B. BRUBAKER	8/3/99				A3			
sheet index		revision sheet		D	D	D	D						
		1		2	3	4							
				4						5		6	

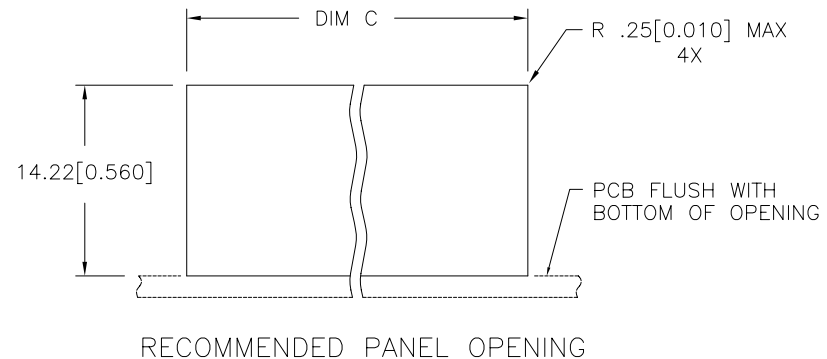
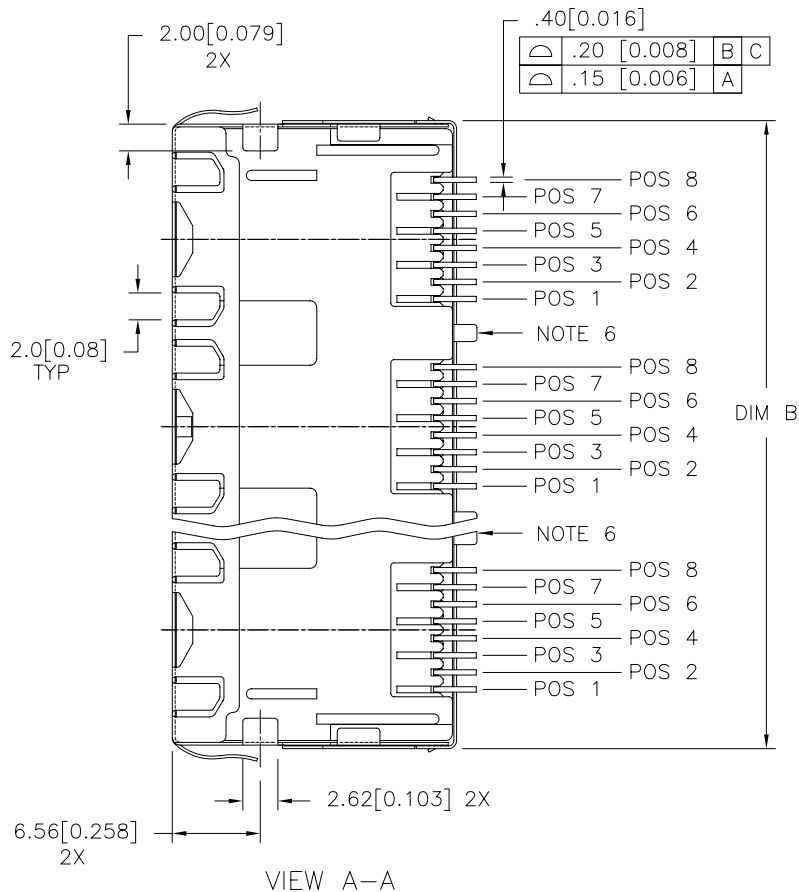


FCIconnect.com

Copyright FCI

PRODUCT NO

SEE TABLE



NOTES :

1. HOUSING MATL: HIGH TEMP. THERMOPLASTIC, COLOR BLACK, UL94V-0.
2. CONTACT MATL: COPPER ALLOY
MATING AREA PLATING: Au OVER Ni., (SEE TABLE).
SOLDER AREA PLATING: 2.54uM/100u" MIN TIN LEAD OVER Ni.
3. SHIELDING MAT'L: TIN PLATED COPPER ALLOY.
4. ALL DIMENSIONS IN MILLIMETERS AND INCHES.
5. UNLESS OTHERWISE SPECIFIED:
DIMENSIONS AND TOLERANCES ARE IN ACCORDANCE WITH ASME Y14.5M 1994.

Δ	.25	[0.010]	A	B	C
----------	-----	---------	---	---	---

ALL UNTOLERANCED DIMENSIONS ARE BASIC.

⑥ SEE SHEET 4 FOR GROUND TAB CONFIGURATION.

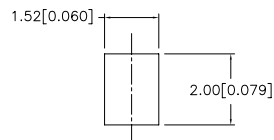
mat'l. code		surface	tolerance	projection	product family
-		ISO 1302	ISO 406		MOD JACK
-		ISO 1101	ISO 1101		
ltr	ecn	no	dr	date	title
D					NET JACK II, RJ45 SMT
					ASSEMBLY NO PEG
					dwg no
					sheet 2 of 4
					size
					A3
					type
					Product Customer Drawing
sheet	revision				
index	sheet				

form: A3

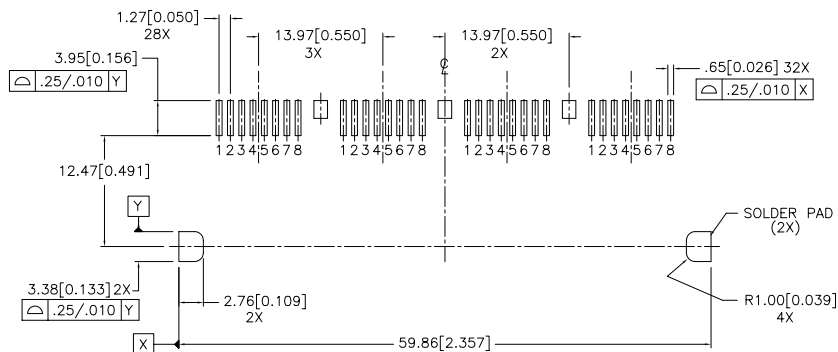
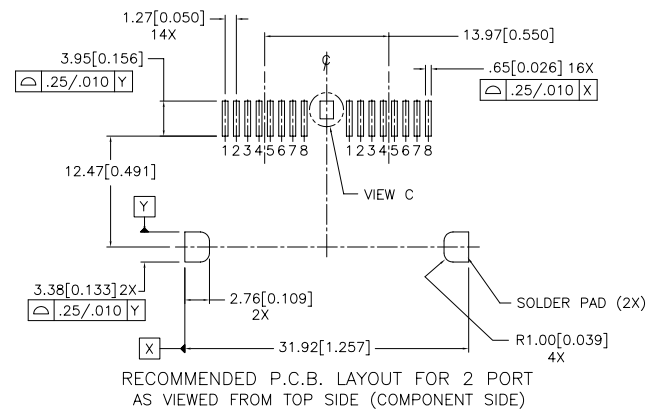
PRODUCT NO	DIM A	DIM B	DIM C
98520-52YXXX	31.17 [1.227]	31.68 [1.247]	32.11 [1.264]
98520-54YXXX	59.11 [2.327]	59.62 [2.347]	60.05 [2.364]

NETJACK MAGNETICS
OPTION CODE - XXX
SEE GES-12-020

SPRING OPTION Y	DESCRIPTION (SEE SHEET 4 FOR OPTION VIEWS)
1	SPRINGS ON TOP, BOTTOM, AND BOTH SIDES
2	NO SPRINGS
3	SPRINGS ON TOP AND BOTTOM
4	SPRINGS ON TOP, BOTTOM, AND 1 PER SIDE (STAGGERED)
5	SAME AS OPTION 4, EXCEPT OPPOSITE STAGGER



VIEW C
SCALE: 4/1
1X FOR 2 PORT
3X FOR 4 PORT



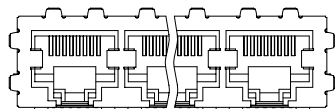
RECOMMENDED P.C.B. LAYOUT FOR 4 PORT
AS VIEWED FROM TOP SIDE (COMPONENT SIDE)

mat'l. code				surface	tolerance	projection	product family
-				ISO 1302 ✓	ISO 406 ISO 1101	MM/INCH	MOD JACK
ltr	ec	no	dr	date	tolerances unless otherwise specified		title
D					linear .X±.3/.01 .XX±.13/.005 0'±2' .XXX±.051/.0020	scale 1:1	NET JACK II, RJ45 SMT ASSEMBLY NO PEG
			dr	B. BAHN	8/3/99	FCI	dwg no
			enr	B. BRUBAKER	8/3/99		sheet 3 of 4 size
			chr	B. BRUBAKER	8/3/99		98520 A3
			app	B. BRUBAKER	8/3/99		type Product Customer Drawing
sheet index	revision sheet						

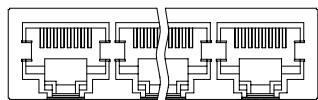
PRODUCT NO

SEE TABLE

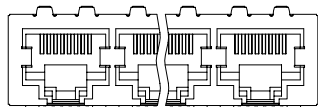
SPRING OPTION Y CONFIG.



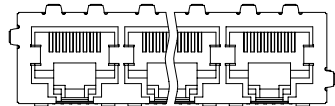
SPRING OPTION 1



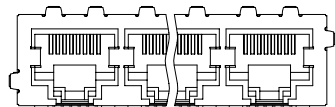
SPRING OPTION 2



SPRING OPTION 3



SPRING OPTION 4

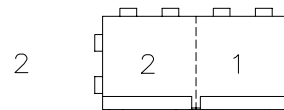
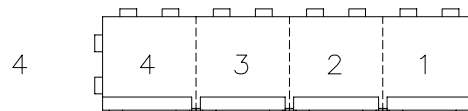


SPRING OPTION 5

LATCHING AND GROUNDING TAB LOCATING CONFIG.

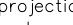

AS VIEWED FROM THE BACKSIDE

PORT NUMBERS



FCIconnect.com

Copyright FCI

mat'l. code —				surface ISO 1302 ✓		tolerance ISO 406 ISO 1101		projection 		product family MOD JACK						
ltr	ecn	no	dr	date		tolerances unless otherwise specified										
D						angles	linear	.X±.3/.01 .XX±.13/.005 .XXX±.051/.0020		MM/INCH		title NET JACK II, RJ45 SMT ASSEMBLY NO PEG				
						0°±2'		scale 1:1								
						dr	B. BAHN	8/3/99				dwg no		sheet 4 of 4		size
						engr	B. BRUBAKER	8/3/99				98520		A3		
						chr	B. BRUBAKER	8/3/99								
						app	B. BRUBAKER	8/3/99								
sheet index		revision sheet										type		Product Customer Drawing		