

PRODUCT NUMBER

20020002-XXXXXXLF

20020002-

PITCH

G: 5.00 mm  
H: 5.08 mm

POLES



02: 2 poles  
03: 3 poles  
04: 4 poles

24: 24 poles

LF : DENOTED RoHS COMPATIBLE

1 : STANDARD PRODUCT  
W/ BOX PACKING

SCREW CODE

CODE	SCREW TYPE	AVAILABILITY
A	-/+ 	ON REQUEST ONLY
B	- 	STANDARD

ALL FLANGE SCREWS ARE ONLY AVAILABLE IN +/-  
COMBINATION SCREW TYPES.

PROPERTY TABLE

FCI SERIES NAME		01-500	01-508	
PITCH (mm)		5.00	5.08	
VOLTAGE RATING (VAC)		300	300	
CURRENT RATING (A)		12	12	
APPLICABLE WIRE RANGE (AWG)	1-WIRE	12~24	12~24	
	2-WIRE	18	18	
WIRE CROSS SECTION (mm <sup>2</sup> )	SOLID	1-WIRE	2.5	2.5
		2-WIRE	1.0	1.0
	STRANDED	1-WIRE	2.5	2.5
		2-WIRE	1.5	1.5
OPENING CONTACT HOUSING(mm <sup>2</sup> )		2.6x3.2	2.6x3.2	
WIRE STRIP LENGTH(mm)		7~8	7~8	
TORQUE +/-10% (N-m/Lb-in)		0.57/5.0	0.57/5.0	
SCREW		M3x0.5	M3x0.5	
WITHSTANDING VOLTAGE (kV)		1.6	1.6	
OPERATING TEMP. (°C)		-40~+115	-40~+115	
POLES AVAILABLE		02~24	02~24	

SAFETY CERTIFICATE




HOUSING CODE

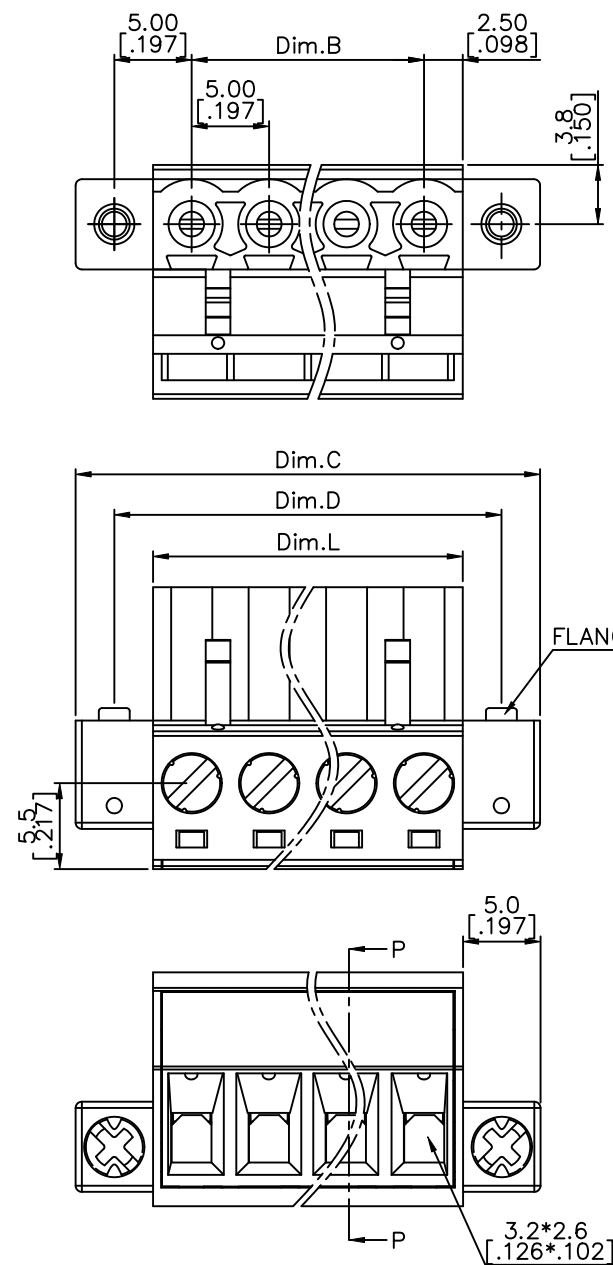
CODE	COLOR	AVAILABILITY
1	GREEN(RAL 6018/T)	STANDARD
2	BLACK	ON REQUEST ONLY
3	GREY(RAL 7004/P)	ON REQUEST ONLY
4	BLUE(RAL 5015/A)	ON REQUEST ONLY

## NOTES:

- MATERIALS  
1-1 HOUSING: THERMALPLASTIC RESIN, UL 94V-0 RATED.  
1-2 SCREW: STEEL, ZINC PLATED.  
1-3 CLAMP: COPPER ALLOY, NICKEL PLATED.  
1-4 TERMINAL: COPPER ALLOY, TIN PLATED.
- PRODUCT SPECIFICATION REFER TO FCI GS-12-625.
- PRODUCT PACKING SPECIFICATION REFER TO FCI GS-14-1394.
- FCI, SAFETY CERTIFICATE LOGO AND SERIES NAME TO BE SHOWN ON PRODUCT SURFACE.
- THE PRODUCTS WHERE THE PART NUMBER END IN "LF" MEET THE EUROPEAN UNION DIRECTIVE AND OTHER COUNTRY REGULATIONS AS DESCRIBED IN GS-22-008.

mat'l. code				surface ASME Y14.5	tolerance ASME Y14.5	projection 	product family TERMINAL BLOCK
ltr	ecn no	dr	date	tolerances unless otherwise specified			title
A	T10-0082	WL	080510	angles	X.±0.5	MM	TERMINAL BLOCK PLUGGABLE, PLUG, SINGAL, W/FLANGE DOWNSIDE CONTACT
B	T10-0158	WL	100410	to hole	X.X±0.3	[INCH]	
C	T-005908	WL	091311	line	X.XX±0.1	scale	
				dr	WENDY CHEN	051410	FCI type CUSTOMER Drawing
				enr	JASON HSU	051410	
				chr	GARY HSIEH	051410	
				appd	JOSEPH HSIA	051410	
sheet index	revision	C	C	C			
	sheet	1	2	3			

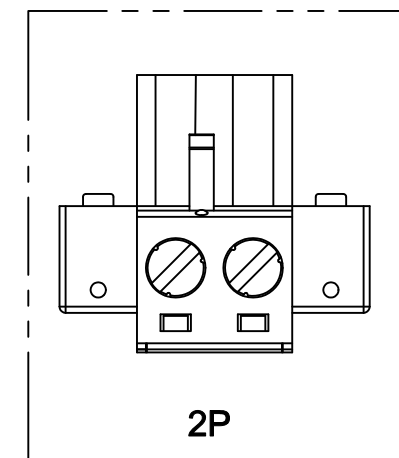
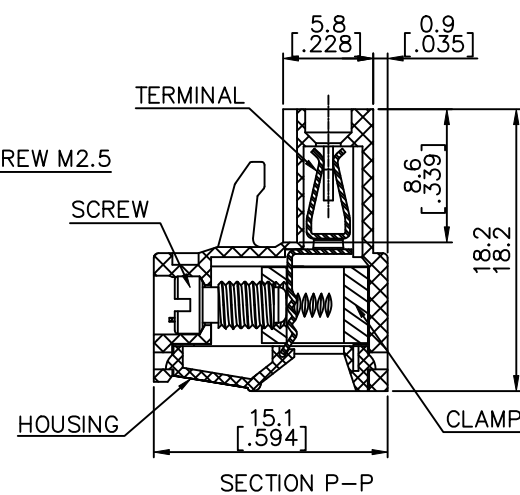
PRODUCT NUMBER	SERIES NAME	PITCH
20020002-GXXXXXLf	01-500	5.00 mm



N= Number of poles

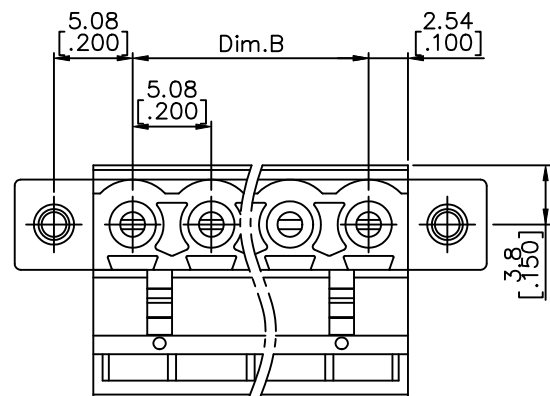
Dim L	N*5.0 [.197]
Dim B	(N-1)*5.0 [.197]
Dim C	(N+2)*5.0 [.197]
Dim D	(N+1)*5.0 [.197]

Poles	Tolerance
2P-7P	±0.15 [.006]
8P-12P	±0.25 [.010]
13P-18P	±0.30 [.012]
19P-24P	±0.40 [.016]



mat'l. code	surface ASME Y14.5 ✓	tolerance ASME Y14.5	projection MM INCH	product family TERMINAL BLOCK
ltr	ecn no	dr	date	title TERMINAL BLOCK PLUGGABLE, PLUG, SINGAL, W/FLANGE DOWNSIDE CONTACT
c				dwg no 20020002
				sheet 2 of 3 size A4
				type CUSTOMER Drawing
sheet index	revision sheet			

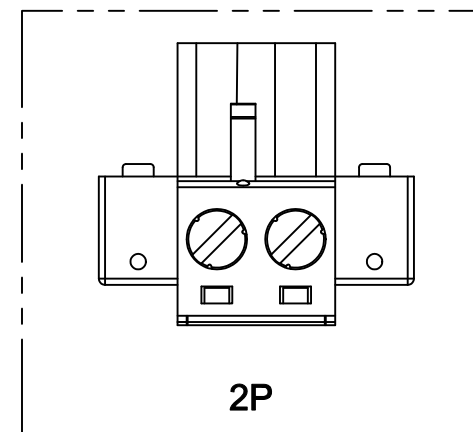
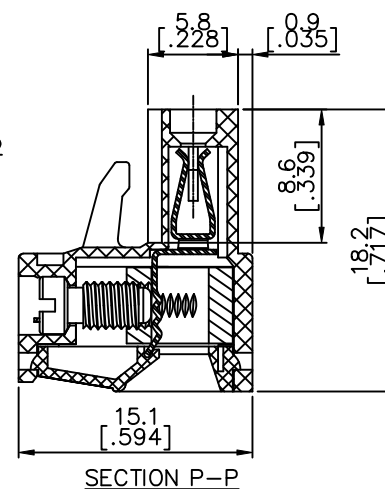
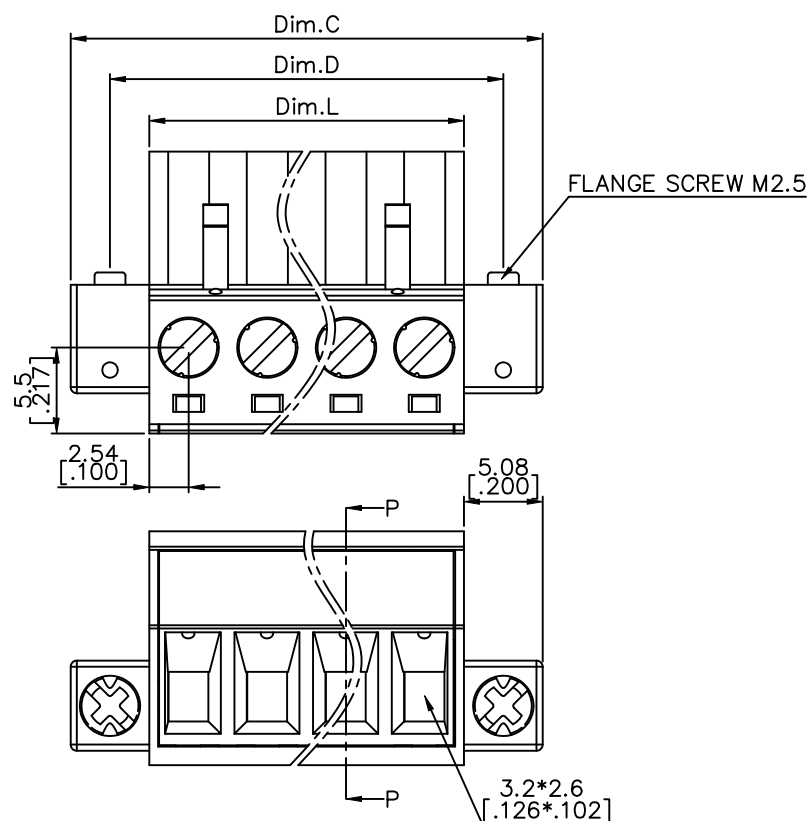
PRODUCT NUMBER	SERIES NAME	PITCH
20020002-HXXXXXXLF	01-508	5.08 mm



N= Number of poles

Dim L	N*5.08[.200]
Dim B	(N-1)*5.08[.200]
Dim C	(N+2)*5.08[.200]
Dim D	(N+1)*5.08[.200]

Poles	Tolerance
2P-7P	±0.15[.006]
8P-12P	±0.25[.010]
13P-18P	±0.30[.012]
19P-24P	±0.40[.016]



mat'l. code	surface ASME Y14.5	tolerance ASME Y14.5	projection MM [INCH]	product family TERMINAL BLOCK
ltr	ecn no	dr	date	title TERMINAL BLOCK PLUGGABLE, PLUG, SINGAL, W/FLANGE DOWNSIDE CONTACT
c				dwg no 20020002
				sheet 3 of 3
				size A4
				type CUSTOMER Drawing
sheet index	revision sheet			