

EMC Components

MEA Series MEA2010LC Type

3-Terminal Filters for Signal Line and DC Power Line SMD

FEATURES

- This array type MEA2010L consists of 4-line SMD filters in one chip.
- This type is suitable for the cellular phone.
- This type corresponds to a lead-free soldering method.

APPLICATIONS

Signal line noise elimination for cellular phones, digital still camera, etc.

TEMPERATURE RANGE

Operating -40 to +85°C

PRODUCT IDENTIFICATION

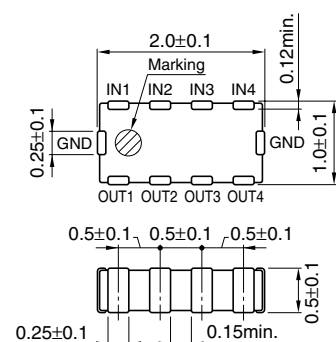
MEA	2010	LC	220	T
(1)	(2)	(3)	(4)	(5)

- (1) Series name (4) Capacitance (pF)
(2) Dimensions L×W 220: 22pF
(3) L type circuit (5) Packaging style T: Taping

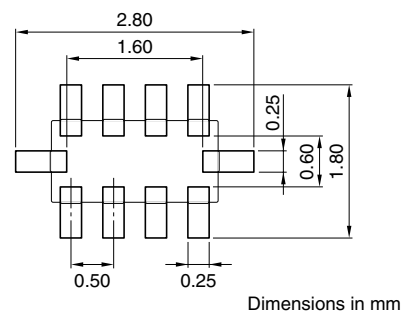
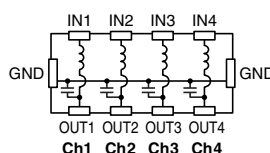
PACKAGING STYLE AND QUANTITIES

Packaging style	Quantity
Taping	4000 pieces/reel

SHAPES AND DIMENSIONS/CIRCUIT DIAGRAM/RECOMMENDED PC BOARD PATTERN (REFLOW)



Weight: 5mg
Dimensions in mm



Dimensions in mm

ELECTRICAL CHARACTERISTICS

Part No.	Rated voltage (V)	Rated current (mA)	Capacitance (pF)	Attenuation(dB)min. [800MHz to 2GHz]
MEA2010LC040	6.3	100	4	15
MEA2010LC060	6.3	100	6	15
MEA2010LC080	6.3	100	8	15
MEA2010LC100	6.3	100	10	20
MEA2010LC150	6.3	100	15	20
MEA2010LC220	6.3	100	22	20

TYPICAL ELECTRICAL CHARACTERISTICS

ATTENUATION vs. FREQUENCY CHARACTERISTICS

