

EMC Components

EMC Filters for AC Power Supply Inlet-Socket

ZUG-11, ZUG-11A Series

FEATURES

- These IEC-type inlet sockets incorporate small, high-performance EMC filters with outstanding attenuation characteristics for both common mode and differential mode noise components.
- Leakage current is maintained at less than 0.5mA
- Two types of connection terminals are offered: Faston® #250 (ZUG-11 series, t: 0.8mm) or lug terminal (ZUG-11A series).
- Efficient manufacturing makes these filters highly cost-effective.

SAFETY STANDARDS

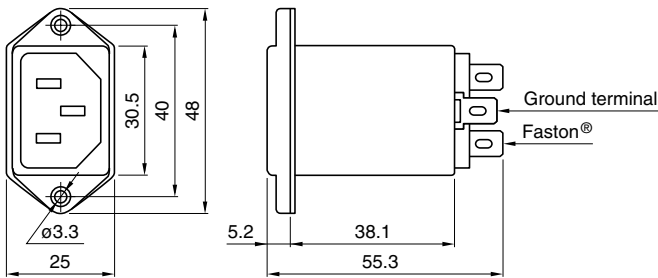
Part No.	UL	CSA	TÜV	VDE
ZUG2203-11/-11A	E62388	LR76849C	R30019	19047-4730-1003
ZUG2206-11/-11A	E62388	LR76849C	R60055	
ZUG2210-11/-11A	E62388	LR76849C	R60055	

APPLICATIONS

Personal computers, computer terminals, office automation equipment, digital applied devices (ECRs, electronic calculators, electronic scales, etc.), measurement devices, medical equipment, and any other devices that require a miniaturized high-performance filter.

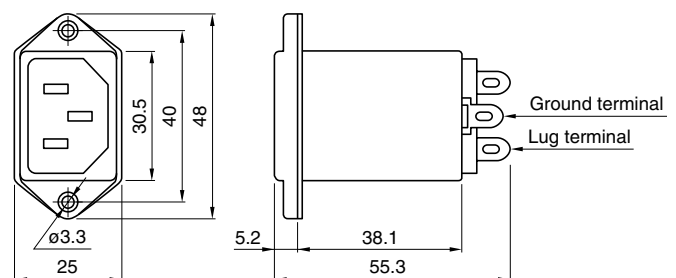
SHAPES AND DIMENSIONS

ZUG-11

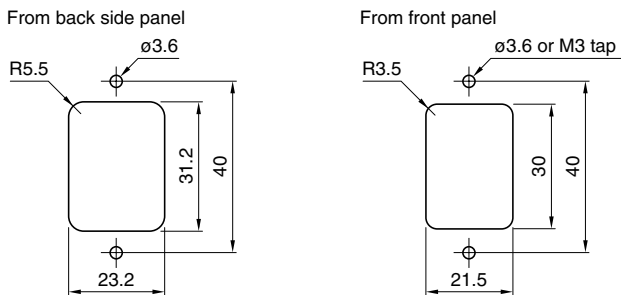


- Case: metal, input terminal: inlet socket(EN60320)
output terminal: Faston® #250(-11 series, t: 0.8mm),
lug terminal(-11A series)

ZUG-11A



Typical dimensions for installation



- Tighten the panel mounting M3 dia. bolt with the torque under $5.88 \times 10^{-1} \text{N} \cdot \text{m}$.

Dimensions in mm



- Faston® is a registered trademark of Tyco Electronics AMP Corp. Incorporated.

EMC Components

EMC Filters for AC Power Supply Inlet-Socket

ZUG-11, ZUG-11A Series

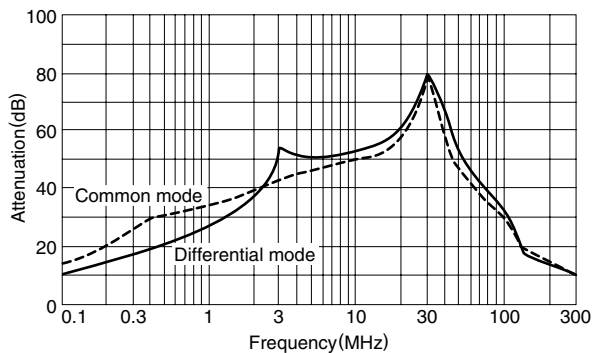
ELECTRICAL CHARACTERISTICS

Part No.	ZUG2203-11, 2203-11A	ZUG2206-11, 2206-11A	ZUG2210-11, 2210-11A
Rated voltage Eac(V)	250	250	250
Rated current(A)	3	6	10
Test voltage Eac(V)[Between terminal and case]	1500	1500	1500
Insulation resistance(MΩ) [DC: 500V, 1 min/between terminal and case]	100min.	100min.	100min.
Leakage current(mA)[250V • 60Hz]	0.5max.	0.5max.	0.5max.
DC resistance(mΩ)	150max.	100max.	100max.
Operating temperature range(°C)[Including self-temperature rise]	-25 to +85	-25 to +85	-25 to +85
With derating over(°C)	55	55	55
Temperature rise(°C)	30max.	30max.	30max.
Attenuation frequency range (MHz)[+5 to +35°C]	Differential mode at 30dB 3 to 30 Common mode at 30dB 3 to 30	5 to 30 5 to 30	8 to 30 10 to 30
Weight(g)	46	46	46

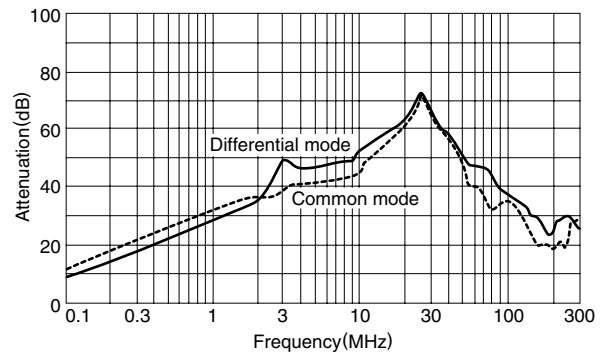
TYPICAL ELECTRICAL CHARACTERISTICS

ATTENUATION vs. FREQUENCY CHARACTERISTICS

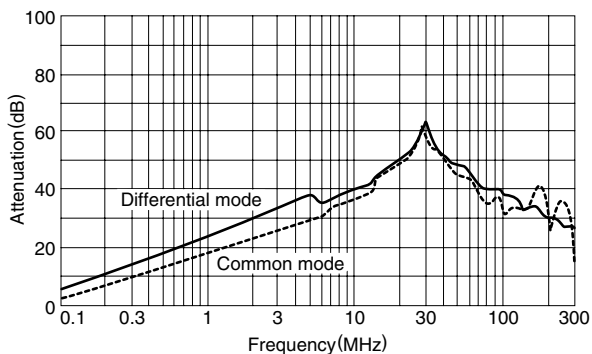
ZUG2203-11/-11A



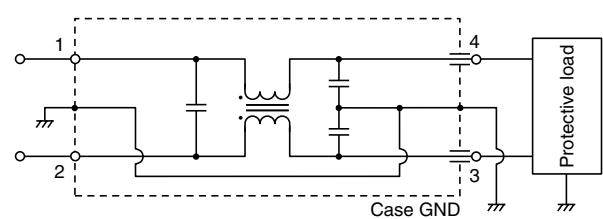
ZUG2206-11/-11A



ZUG2210-11/-11A



CIRCUIT DIAGRAM



- Also available with built-in bleeder resistor.