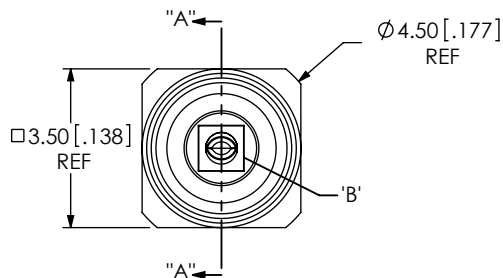
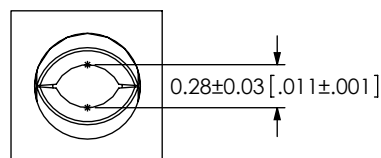


DO NOT
SCALE FROM
THIS PRINT



DESIGNED & DIMENSIONED
IN MILLIMETERS[INCHES]



DETAIL 'B'
SCALE 20 : 1

MMCX-J-P-X-ST-TH1

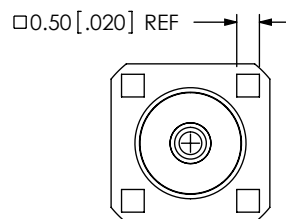
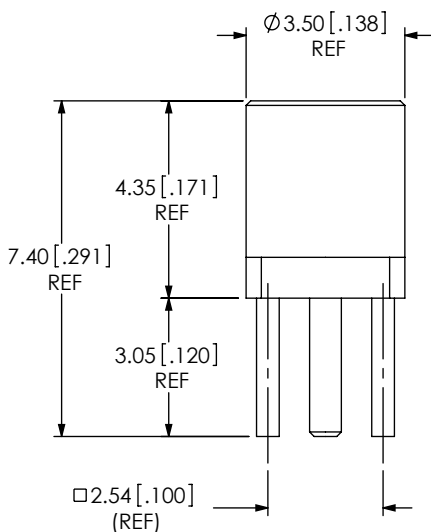
GENDER
-J: JACK

TYPE
-P: PCB

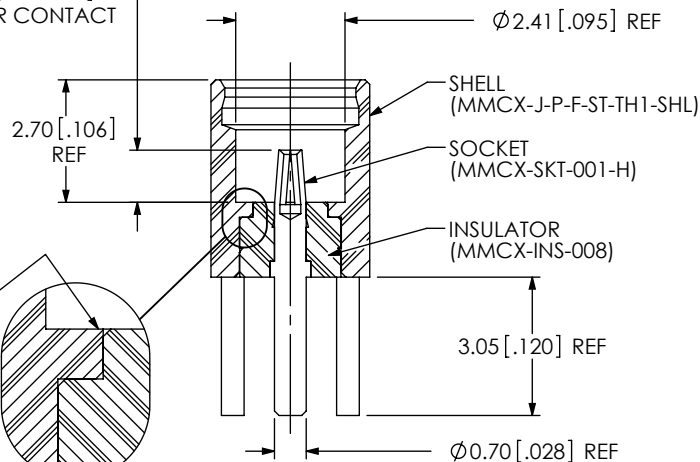
TERMINATION
-TH1: THROUGH HOLE

ORIENTATION
-ST: STRAIGHT

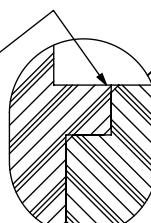
PLATING SPECIFICATION
-H: HEAVY GOLD IN CONTACT
AREA, FLASH GOLD ON
BALANCE



1.15^{+0.05}_{-0.15} [.045^{+0.002}_{-.006}]
TO CENTER CONTACT

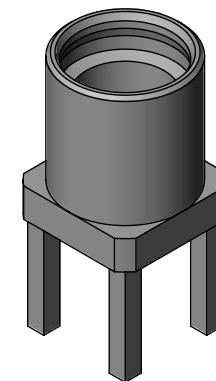


0.00^{+0.03}_{-0.13} [.000^{+0.001}_{-.005}]
TO INSULATOR

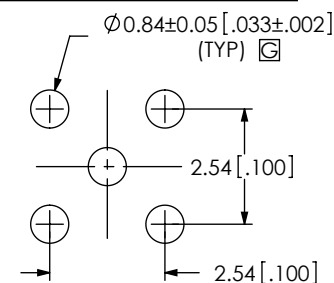


DETAIL 'C'
SCALE 20 : 1

SECTION "A"- "A"



RECOMMENDED PCB LAYOUT



NOTES:

1. REPRESENTS A CRITICAL DIMENSION.
2. PUSHOUT FORCE FOR INSULATOR: 22.24 N [5 LB] MIN.
3. PUSHOUT FORCE FOR CENTER CONTACT: 11.12 N [2.5 LB] MIN.
4. SEE CO-HD-WI-3040M RF PACKAGING FOR PACKAGING INSTRUCTIONS, USE SAMTEC TRAY TY-SMA001-1 AND TY-SMA001-2. QUANTITIES LESS THAN A FULL TRAY WILL NOT BE PACKAGED IN TRAYS.
5. RoHS COMPLIANT.

UNLESS OTHERWISE SPECIFIED,
DIMENSIONS ARE IN
MILLIMETERS [INCHES].
TOLERANCES ARE:

DECIMALS ANGLES
.X: ±0.3 [.01] 2°
.XX: ±0.13 [.005]
.XXX: ±0.051 [.0020]

PROPRIETARY NOTE

THIS DOCUMENT CONTAINS INFORMATION
CONFIDENTIAL AND PROPRIETARY TO
SAMTEC, INC. AND SHALL NOT BE REPRODUCED
OR TRANSFERRED TO OTHER DOCUMENTS OR
DISCLOSED TO OTHERS OR USED FOR ANY
PURPOSE OTHER THAN THAT WHICH IT WAS
OBTAINED WITHOUT THE EXPRESSED WRITTEN
CONSENT OF SAMTEC, INC.

MATERIAL: DO NOT SCALE DRAWING

SHEET SCALE: 6:1

SHELL : BRASS C3604B
INSULATOR : PTFE (WHITE)
SOCKET : BeCu C17300

samtec

520 PARK EAST BLVD, NEW ALBANY, IN 47150
PHONE: 812-944-6733 FAX: 812-948-5047
e-Mail: info@SAMTEC.com code: 55322

DESCRIPTION:
MMCX STRAIGHT, THROUGH HOLE JACK- 50 OHM

DWG. NO.
MMCX-J-P-X-ST-TH1

BY: R MUSSER 11/30/2007 SHEET 1 OF 1