

PART NAME	LARGE NON-METALLIC ENCLOSURE (STYLE D)	PART No.	NBD-10449 & NBD-10469 & NBD-15449
-----------	--	----------	-----------------------------------

MATERIAL:

INDOOR RATED

SOLID BODY & COVER ____ ABS/PC BLENDED PLASTIC
UL94-5VB FLAMMABILITY RATING
-40°C TO +70°C TEMPERATURE RANGE

CLEAR COVER ____ POLYCARBONATE PLASTIC
UL94-VD FLAMMABILITY RATING
-40°C TO +70°C TEMPERATURE RANGE
UV STABILIZED

OUTDOOR RATED

SOLID BODY & COVER ____ PBT/PC BLENDED PLASTIC
UL94-5VA FLAMMABILITY RATING
-40°C TO +70°C TEMPERATURE RANGE
UV STABILIZED

FINISH:

BODY ____ LIGHT GRAY
COVER ____ LIGHT GRAY OR CLEAR

COVER IS GASKETED.

AIR AND MOISTURE VENTS, STAINLESS STEEL LOCKING HASP, PANEL MOUNTING RAILS, GALVANIZED STEEL INNER PANEL AND STAINLESS STEEL WALL MOUNTING BRACKETS ARE NOT INCLUDED, BUT CAN BE PURCHASED SEPARATELY.

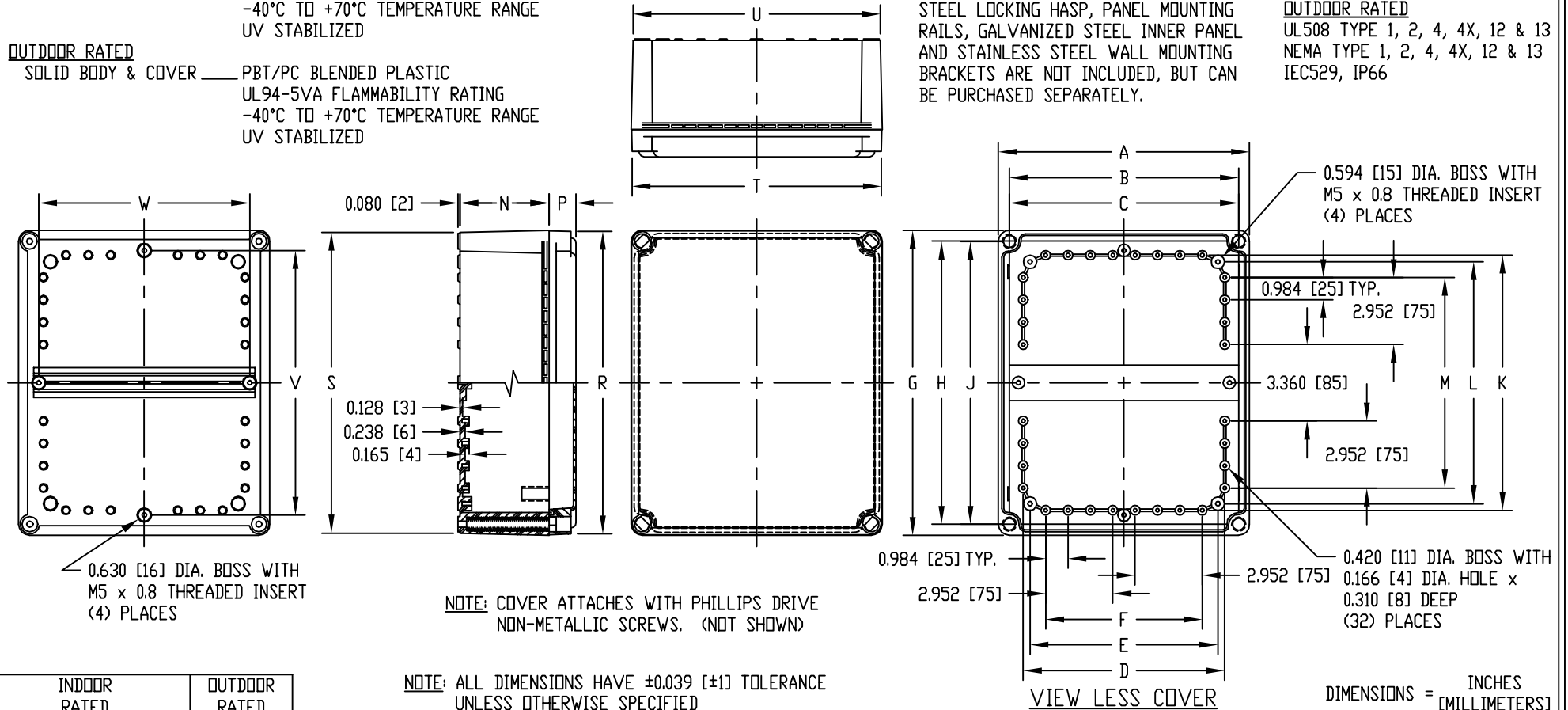
INDUSTRY STANDARDS:

INDOOR RATED

UL508 TYPE 1, 2, 4, 4X INDOOR, 12 & 13
NEMA TYPE 1, 2, 4, 4X, 12 & 13
IEC529, IP66

OUTDOOR RATED

UL508 TYPE 1, 2, 4, 4X, 12 & 13
NEMA TYPE 1, 2, 4, 4X, 12 & 13
IEC529, IP66



INDOOR RATED		OUTDOOR RATED																				
PART NO.		PART NO.																				
SOLID COVER	CLEAR COVER	SOLID COVER	A	B	C	D	E	F	G	H	J	K	L	M	N	P	R	S	T	U	V	W
NBD-10449	NBD-10469	NBD-15449	11.052 [281]	10.090 [256]	10.086 [256]	8.870 [225]	8.265 [210]	6.888 [175]	13.423 [341]	12.460 [316]	12.443 [316]	11.220 [285]	10.637 [270]	9.264 [235]	3.920 [100]	1.191 [30]	13.310 [338]	13.230 [336]	10.960 [278]	10.890 [277]	11.634 [296]	9.280 [236]