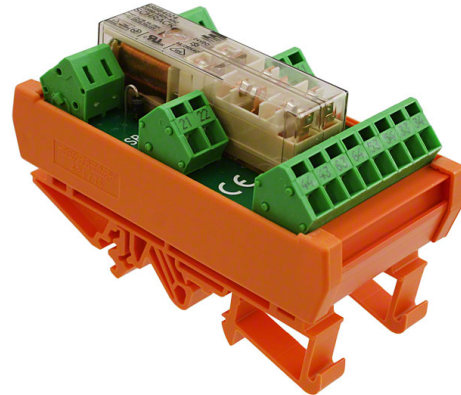


# FORCE GUIDED RELAY ON DIN-RAIL SR6 Z

## GENERAL PURPOSE RELAYS

### FEATURES

- 6 pole relay with force guided contacts according to EN61810-3
- DIN rail mounting
- AC / DC input



### APPLICATIONS

- contact monitoring in railway
- elevator and machine controls

### APPROVALS

#### Relay SR6

- VDE, UL, TUV, CQC

#### Module SR6Z:

- CE

Technical data of approved types on request



## FORCE GUIDED RELAY ON DIN-RAIL SR6 Z

General Purpose Relays Force Guided Relays

### CONTACT DATA

Contact arrangement	3 form A (NO) and 3 form B (NC), 4 form A (NO) and 2 form B (NC), 5 form A (NO) and 1 form B (NC)
Rated voltage	250VAC
Max. switching voltage	250VAC
Rated current	8 A
Contact material	AgSnO <sub>2</sub>
Contact style	single contact, force guided type A according to EN 61810-3
Min. recommended contact load	5V, 10mA
Initial contact resistance	≤100mΩ at 1A, 24VDC ≤20Ω at 10mA, 5VDC
Frequency of operation, with/without load	6/150min <sup>-1</sup>
Contact ratings, IEC60947-5-1, on 1 form A (NO) contact	AC15-5A DC13-6A
Mechanical endurance	10x10 <sup>6</sup> operations

### INSULATION DATA

Initial dielectric strength	
between open contacts	1000V <sub>rms</sub>
between contact and coil	3000V <sub>rms</sub>
between adjacent contacts	2000V <sub>rms</sub>
Clearance/creepage	
between open contacts	microdisconnection
between contact and coil	≥5.5/5.5mm
between adjacent contacts	≥2,8 /2.8mm
Insulation to EN 62477 (former EN 50178), , type of insulation	
between contact and coil	reinforced
between adjacent contacts	basic

### COIL DATA

Coil voltage range	6 to 115 VAC/VDC, 230VAC
DC energizing voltage U <sub>rtd</sub>	6, 12, 18, 21, 24, 36, 40, 48, 60, 115VDC
AC/DC energizing voltage U <sub>rtd</sub>	24, 115VAC/VDC
AC energizing voltage U <sub>rtd</sub>	230VAC
Operative range	90 to 110% of U <sub>rtd</sub>
Release voltage (+23°C)	10% of U <sub>rtd</sub>
Max. coil power DC versions	1200mW
Max. system power AC/DC versions	2400mVA

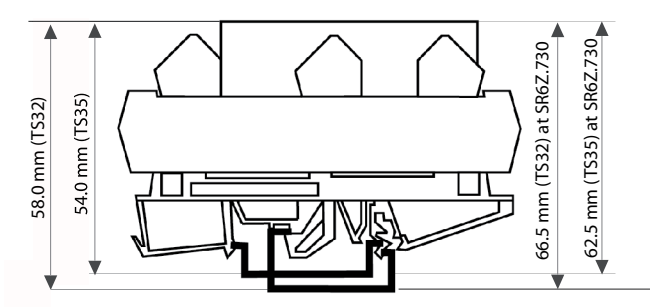
### OTHER DATA

Material compliance	EU RoHS/ELV, China RoHS, REACH, Halogen content refer to the Product Compliance Support Center at <a href="http://www.te.com/customer-support/rohssupportcenter">www.te.com/customer-support/rohssupportcenter</a>	
Ambient temperature		
for mounting/handling	0 to 40°C	
in operation	-25 to 50°C	
SR6ZC 730 only	-25 to 40°C	
Terminal type	screwless clamp connectors	
Wire cross section		
solid wire	2.5mm <sup>2</sup>	
stranded wire	2.5mm <sup>2</sup>	
stranded wire with bootlace crimp	1.5mm <sup>2</sup>	
Mounting position	any	
Weight	90 g	
Packaging unit	2	

FORCE GUIDED RELAY ON DIN-RAIL SR6 Z

General Purpose Relays Force Guided Relays

DIMENSIONS (Unit: mm)

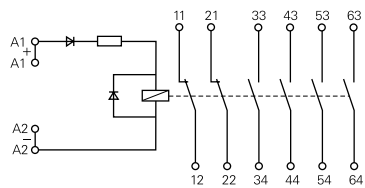


Module width 46 mm  
Module length 87 mm

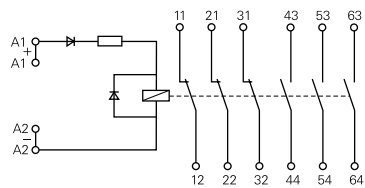
Fit onto mounting rails according to  
DIN EN 60175

TERMINAL ASSIGNMENT

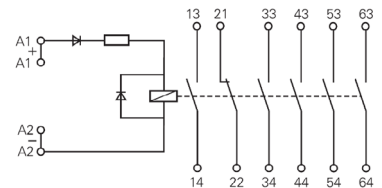
DC module, 4 NO+2 NC version



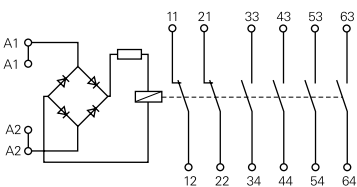
DC module, 3 NO+3 NC version



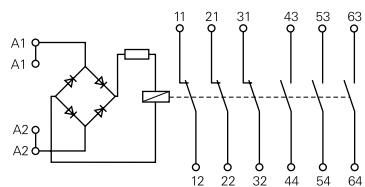
DC module, 5 NO+1 NC version



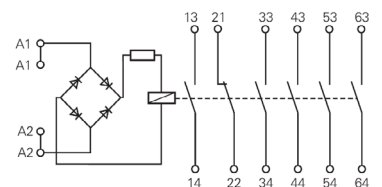
AC/DC module, 4 NO+2 NC version



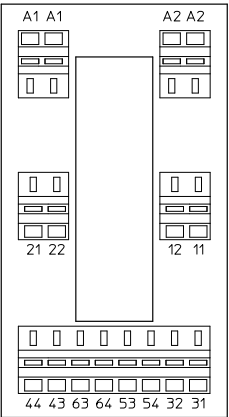
AC/DC module, 3 NO+3 NC version



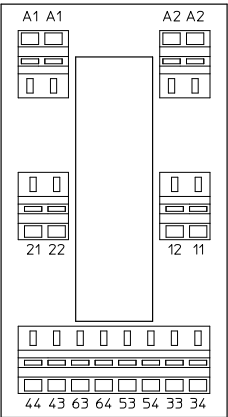
AC/DC module, 5 NO+1 NC version



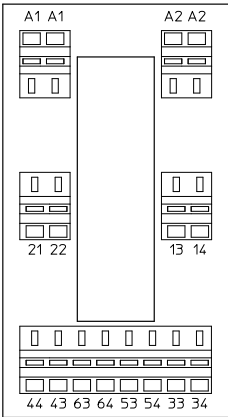
SR6ZA...



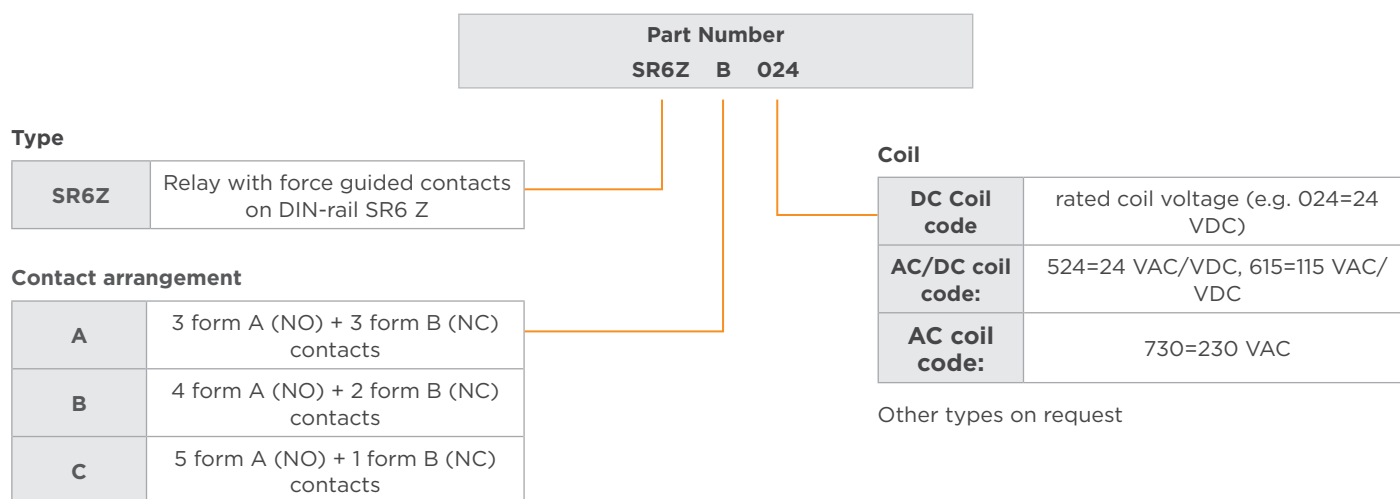
SR6ZB...



SR6ZC...



## PRODUCT CODE STRUCTURE



## PRODUCT INFORMATION

Product code	Type	Contact configuration	Contact material	Coil	Part number
SR6ZA024	6-pole force guided relay module	3 form A + 3 form B 3 NO + 3 NC contacts	AgSnO2	24VDC	<a href="#">7-1415033-1</a>
SR6ZA524				24VAC/VDC	<a href="#">9-1415059-1</a>
SR6ZA615				115VAC/VDC	<a href="#">1415060-1</a>
SR6ZA730				230VAC	<a href="#">1-1415060-1</a>
SR6ZB024		4 form A + 2 form B 4 NO + 2 NC contacts		24VDC	<a href="#">5-1415033-1</a>
SR6ZB524				24VAC/VDC	<a href="#">2-1415060-1</a>
SR6ZB615				115VAC/VDC	<a href="#">6-1415046-1</a>
SR6ZB730				230 VAC	<a href="#">3-1415060-1</a>
SR6ZC024		5 form A + 1 form B 5 NO + 1 NC contacts		24VDC	<a href="#">3-1415042-1</a>
SR6ZC524				24VAC/VDC	<a href="#">4-1415060-1</a>
SR6ZC615				115VAC/VDC	<a href="#">5-1415060-1</a>
SR6ZC730				230VAC	<a href="#">6-1415060-1</a>

**te.com**

©2025 TE Connectivity Plc. All Rights Reserved.

TE Connectivity, TE connectivity (logo) and Every Connection Counts are trademarks owned or licensed by the TE Connectivity Plc. family of companies. All other logos, products and/or company names referred to herein might be trademarks of their respective owners.

While TE has made every reasonable effort to ensure the accuracy of the information in this document, TE does not guarantee that it is error-free, nor does TE make any other representation, warranty or guarantee that the information is accurate, correct, reliable or current. TE reserves the right to make any changes to the information contained herein without prior notice. TE Connectivity assumes only those obligations set forth in the terms and conditions for this product and shall in no event be liable for any incidental, indirect, or consequential damages arising out of the sale, resale, use, or misapplication of the product. TE expressly disclaims any implied warranties with respect to the information contained herein, including, but not limited to, implied warranties of merchantability or fitness for a particular purpose. Dimensions, specifications and/or information contained herein are for reference purposes only and are subject to change without notice. Consult TE for the latest dimensions, specifications and/or information. Users of TE Connectivity products must make their own assessment as to whether the respective product is suitable for the respective desired application.

08/25 ED