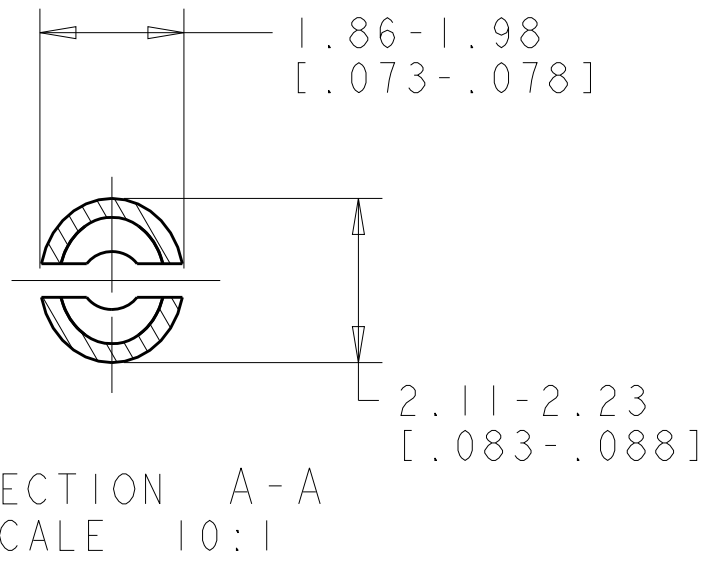
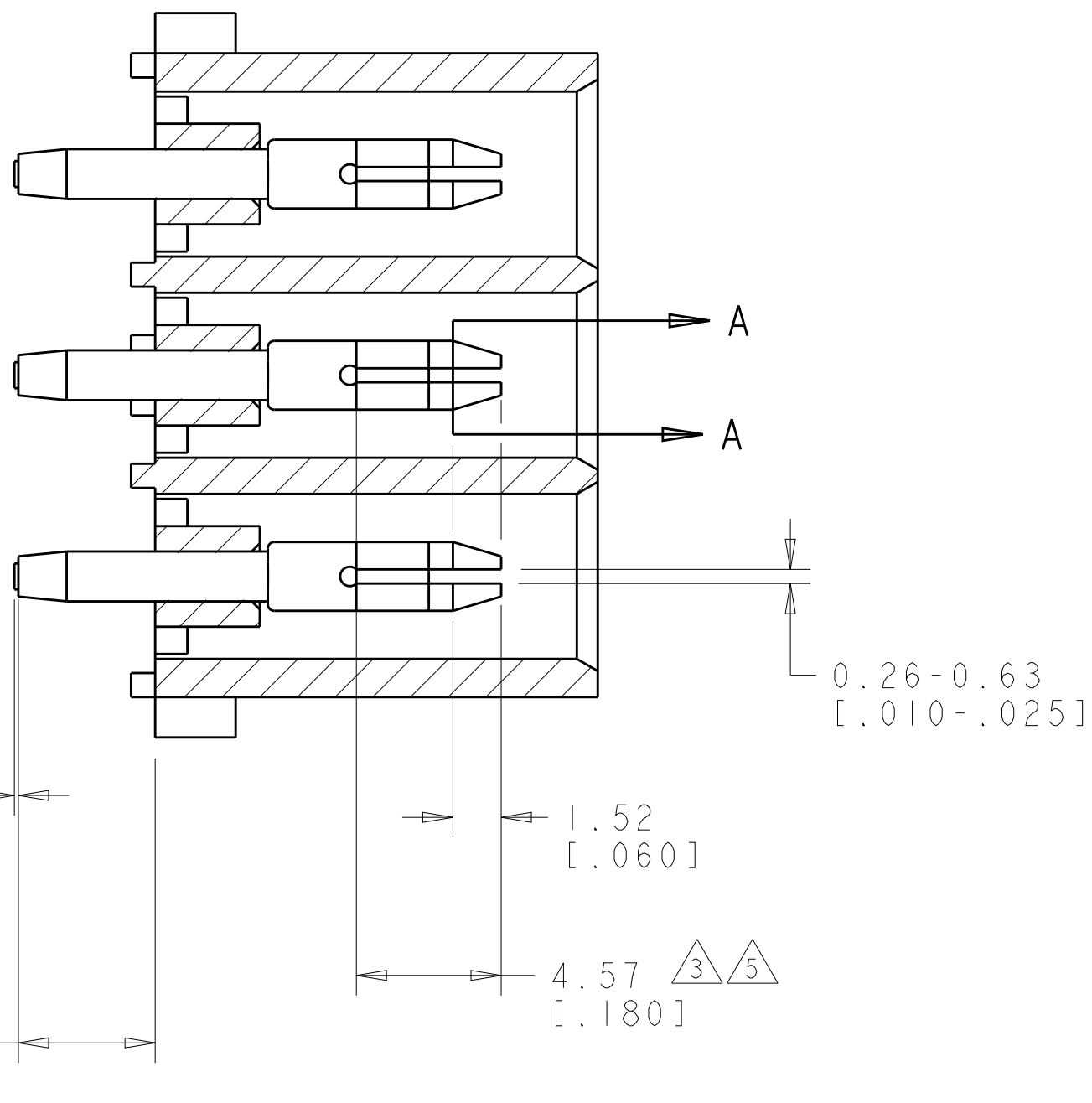
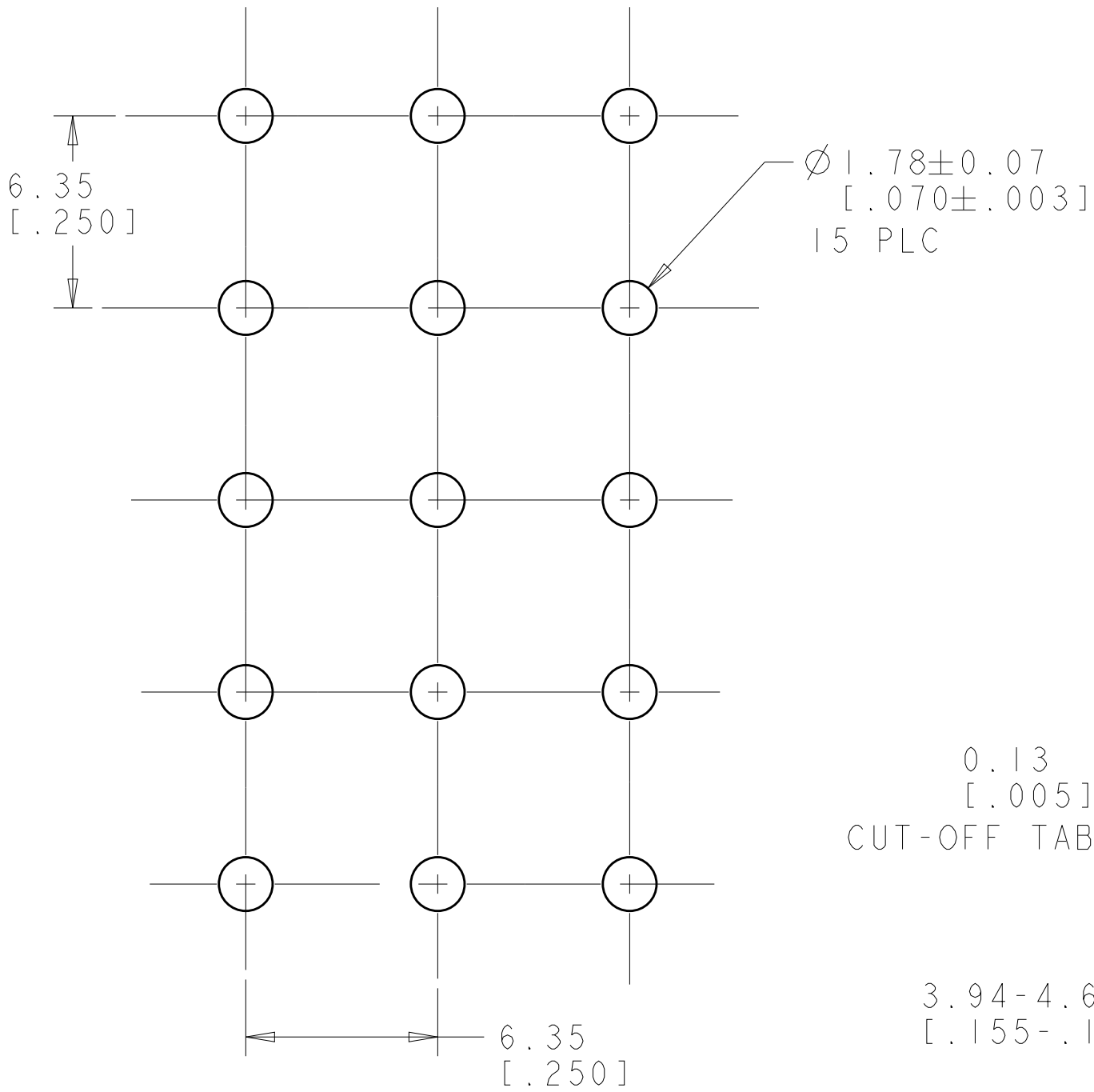
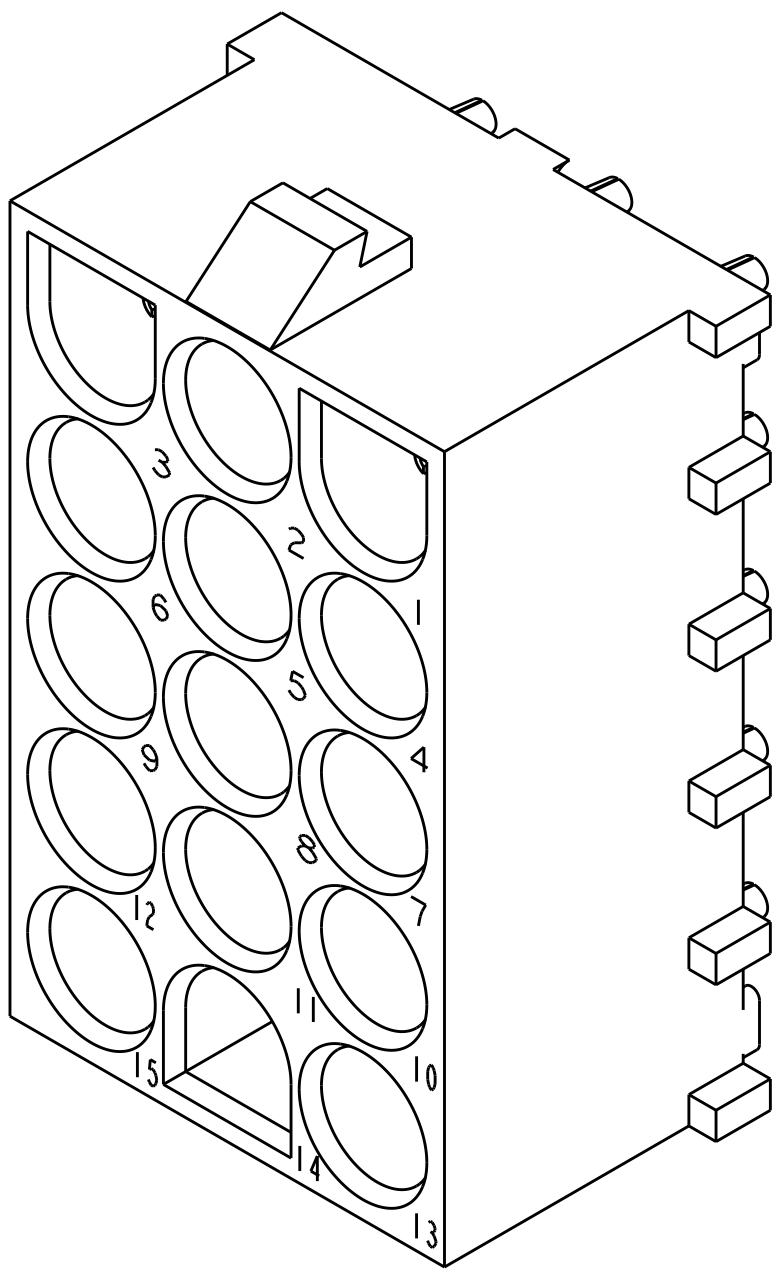
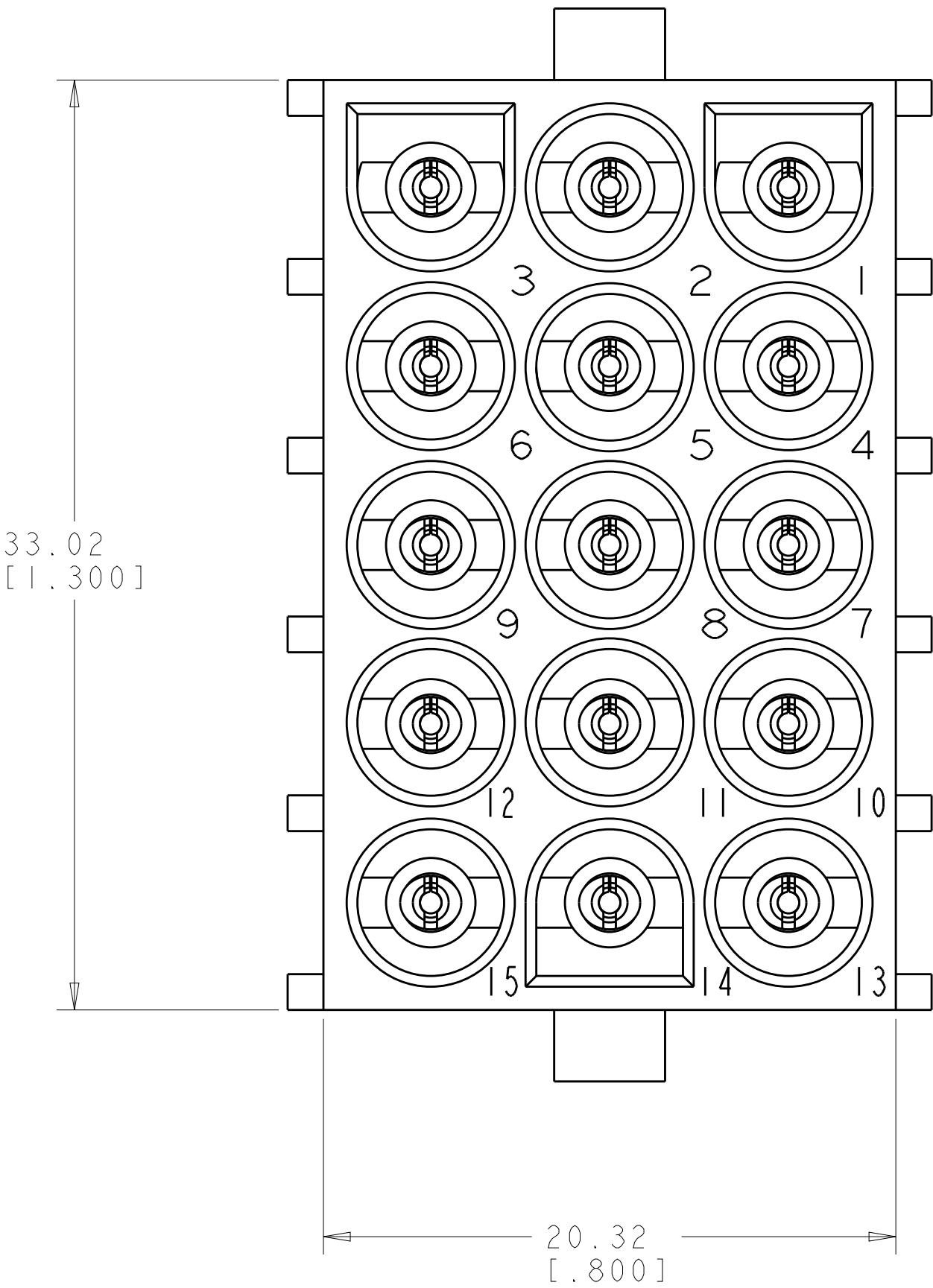
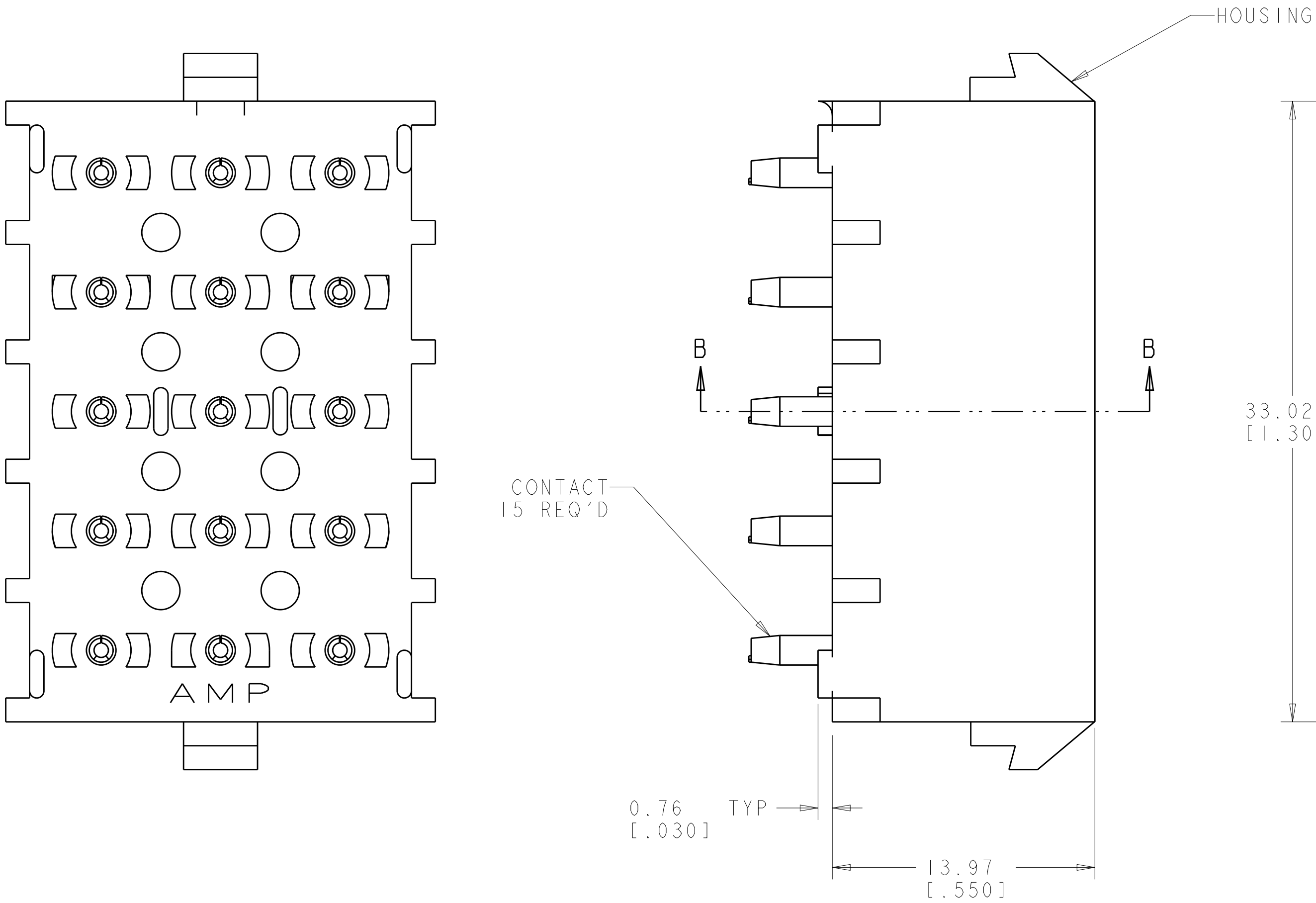


LOC		DIST		REVISIONS					
CM	00		P	LTR	DESCRIPTION	DATE	DWN	APVD	
				Y2	REVISED PER ECR-12-011660	24JAN2013	KH	TM	
				Y3	REVISED PER ECR-13-019507	02JAN2014	AV	KD	

1. MATES WITH HOUSING 480710.
2. PARTS COMPLY TO TE SOLDERABILITY SPECIFICATION 109-11-3.

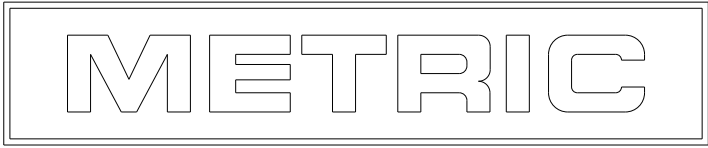
- 3 CONTACT IS PLATED OVERALL WITH 0.00127 [0.000050] NICKEL, THEN 0.00076 [0.000030] GOLD OVER CONTACT LENGTH INDICATED AND TIN LEAD ON SOLDER TAIL END.
- 4 CIRCUIT IDENTIFICATION CHARACTERS ARE ADJACENT TO THE INDICATED CAVITIES, BUT LOCATION AND ORIENTATION MAY DIFFER FROM PRINT.
- 5 CONTACT IS PLATED OVERALL WITH 0.00127 [0.000050] NICKEL, THEN 0.00076 [0.000030] GOLD OVER CONTACT LENGTH INDICATED AND MATTE TIN ON SOLDER TAIL END.
6. DIMENSIONS IN BRACKETS ARE IN INCHES.
- 7 SUPERSEDED BY 350434-4



PHOSPOR BRONZE, GOLD 7	NYLON, UL94V-2, NATURAL	350434-4
7 PHOSPOR BRONZE, GOLD 7	NYLON, UL94V-2, NATURAL	350434-2
PHOSPOR BRONZE, PRE-TIN	NYLON, UL94V-2, NATURAL	350434-1
PIN CONTACT MATERIAL AND FINISH	HOUSING MATERIAL AND COLOR	PART NUMBER

RECOMMENDED MOUNTING HOLE PATTERN FOR 1.57 [0.062] THICK P.C. BOARD HOLE THAT CORRESPONDS TO REMOVED CONTACT CAN BE OMITTED

SECTION B-B



THIS DRAWING IS A CONTROLLED DOCUMENT.		DWN K. WHITAKER 04MAY2005	TE Connectivity	
DIMENSIONS: mm[INCHES]		CHK S. RIDGILL 04MAY2005		
TOLERANCES UNLESS OTHERWISE SPECIFIED:		APVD S. RIDGILL 04MAY2005	NAME PIN HEADER ASSEMBLY, 15 CIRCUIT, UNIVERSAL MATE-N-LOK(TM)	
0 PLC ±		PRODUCT SPEC		
1 PLC ±		APPLICATION SPEC	SIZE CAGE CODE DRAWING NO	
2 PLC ±		WEIGHT		
3 PLC ±		CUSTOMER DRAWING	SCALE 1:1 SHEET 1 OF 1 REV Y3	
4 PLC ±				
ANGLES ±0°30'				
FINISH				
MATERIAL SEE TABLE				
SEE TABLE				