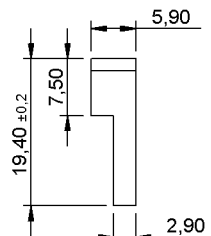
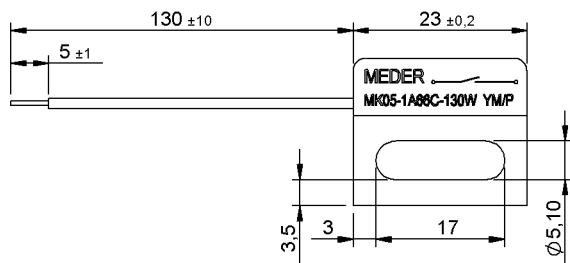


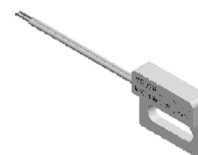
Preliminary Datasheet

Dimensions mm[inch]

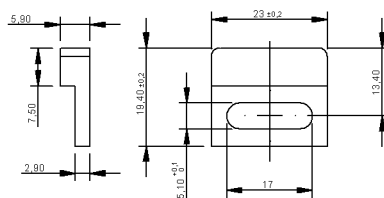
tolerances acc. to DIN ISO 2768-m
Toleranzen gem. DIN ISO 2768-m



Isometric

 Scale 1:2
 Maßstab 1:2


Housing



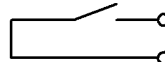
Cable

 flat cable LIYZ 2x0,14qmm
 Flachbandkabel LIYZ 2x0,14qmm

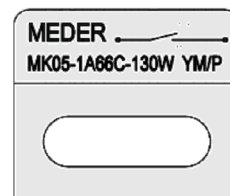
Terminals/Connector

 Ends tinned
 Enden verzinnt

Schematic



Marking

 according to EN60062/factory code
 gem. EN60062/Fertigungsstätte


Magnetic properties	Conditions	Min	Typ	Max	Unit
Pull in	at 20°C	32		63	AT
Test equipment		KMS-14, SA002+PK002			

Special Product Data	Conditions	Min	Typ	Max	Unit
Contact - form		A - NO			
Contact rating	Any DC combination of V & A not to exceed their individual max.'s			10	W
operating voltage	DC or Peak AC			180	V
operating ampere	DC or Peak AC			1,25	A
Switching current	DC or Peak AC			0,5	A
Sensor-resistance	measured with 40% overdrive Sensor deactivated			200	mOhm
Housing material		PBT glass fibre reinforced			
Case color		white			
Sealing compound		Polyurethan			

Environmental data	Conditions	Min	Typ	Max	Unit
Operating temperature	cable not moved	-30		70	°C
Operating temperature	cable moved	-5		70	°C
Storage temperature		-30		70	°C

Cable specification	Conditions	Min	Typ	Max	Unit
Cable type		flat cable			
Cable material		PVC			
Cross section [mm²]		0,14			

General data	Conditions	Min	Typ	Max	Unit
Mounting advice		over 5m cable, a series resistor is recommended.			
mounting advice 1		Decreased switching distances by mounting on iron			
mounting advice 2		Magnetically conductive screws must not be used			
tightening torque	Screw M3 ISO 1207 Disk ISO 7089			0,5	Nm